



**Federal Aviation
Administration**



Terminal Area Forecast Summary

Fiscal Years 2015-2040

Preface

This publication provides aviation data users with summary historical and forecast statistics on passenger demand and aviation activity at U.S. airports. The summary level forecasts are based on individual airport projections.

The Terminal Area Forecast (TAF) includes forecasts for active airports in the National Plan of Integrated Airport Systems (NPIAS). The Federal Aviation Administration's (FAA) Forecast and Performance Analysis Division, Office of Aviation Policy and Plans, develops the TAF. As its primary input, the TAF initially used the national forecasts of aviation activity contained in FAA Aerospace Forecasts, Fiscal Years 2015-2035. The final TAF considers the forecasts and assumptions contained in FAA Aerospace Forecasts, Fiscal Years 2016-2036. Beginning March, 2016 the tables for the national forecasts can be found at:

http://www.faa.gov/data_research/aviation/aerospace_forecasts/media/2015_National_Forecast_Report.pdf/.

The TAF is available on the Internet. The TAF model and TAF database can be accessed at:

http://www.faa.gov/data_research/aviation/taf/.

The TAF model allows users to create their own forecast scenarios. It contains a query data application that allows the public to access and print historical (1990 to 2014) and forecast (2015 to 2040) aviation activity data by individual airport, state, or FAA region.

The FAA welcomes public comment on the forecasts, as well as suggestions for improving the usefulness of the TAF.

Roger Schaufele, Jr.
Manager
Forecast and Performance Analysis Division
Office of Aviation Policy and Plans

Acknowledgements

This document was prepared by the Forecast and Performance Analysis Division of the FAA Office of Aviation Policy and Plans under the direction of Roger Schaufele, Manager, and Michael Lukacs, Deputy Division Manager, Forecast and Performance Analysis Division. The forecasts were prepared by Peter LeBoff, Dipasis Bhadra, Li Ding, Chia-Mei Liu, Anna Barlett, Gary Mihalik, and Katherine Lizotte.

The software support was provided under contract by IT WORKS! Software. We extend a special thanks to Alice Dobrin and Damien Agostinelli whose invaluable programming support for the TAF software made accessing and analyzing this airport data so much more efficient.

Special acknowledgments are made to FAA Airports staff in the Regional and Airport District Offices for their assistance in coordinating the regional reviews, state input, and forecast recommendations. The reviews and comments of the regional offices were extremely important and useful in guiding the Forecast and Performance Analysis Division in making adjustments to the preliminary version of the forecasts. Their efforts have enhanced the accuracy and credibility of the final product.

Table of Contents

Preface	i
Acknowledgements	ii
Table of Contents	iii
Summary Historical and Forecast Highlights	1
Forecast Process	3
Introduction.....	3
Forecast Method	4
Forecast Review Process	5
Data Sources	5
TAF and National Forecast Summary	7
Near-Term Forecasts	7
National Forecast Trends.....	7
Trends by Region.....	7
Large, Medium, and Small Hubs.....	8
Core Airports	9
TAF and National Forecast Tables	10
Table S-1 Enplanements at Core Airports (in thousands).....	11
Graph S-1 Enplanements Growth Rates for the Core Airports, Fiscal Years 2014-2040	12
Table S-2 Airport Operations at the Core Airports (in thousands)	13
Graph S-2 Airport Operations Growth Rates for the Core Airports, Fiscal Years 2014-2040	14
Table S-3 Air Traffic Control Towers and Contract Towers by Region and State	15
Table S-4 Ranking of Top 100 FAA Towers by Total Enplanements, FY 2014	16
Table S-5 Summary of Enplanements and Airport Operations at FAA Towers and Contract Towers ..	19
Table S-6 Commercial Airport Operations Summary by Region*	20
Table S-7 Itinerant Airport Operations Summary by Region*	21
Table S-8 Total Airport Operations Summary by Region*	22
Table S-9 TRACON Operations Summary by Region	23
Table S-10 Enplanements Summary by Region*	24
Table S-11 Based Aircraft Summary by Region*	25
Appendix A: Description of Activity Measures	26
Air Carrier Enplanements.....	26
Regional Enplanements	26

Aircraft Operations	26
Local Operations	27
Itinerant Operations.....	27
Tracon Operations	27
Overflights	27
Appendix B: List of FAA Towers by Hub Size and FAA Contract Towers	28
Table B-1 List of Large Hub Towers	29
Table B-2 List of Medium Hub Towers.....	30
Table B-3 List of Small Hub Towers	31
Table B-4 List of Non-Hub Towers	33
Table B-5 List of FAA Contract Towers	40

Summary Historical and Forecast Highlights

- A total of 753.1 million passengers were enplaned at U.S. airports in 2014; FAA and Federal contract towered airports accounted for 748.6 million enplanements.
- The top 100 air carrier airports accounted for 708.5 million enplanements in 2014, or 94 percent of total U.S. enplanements.
- FAA towers handled 35.4 million operations (takeoffs and landings) in 2014, including 19.6 million commercial aircraft operations.
- FAA contract towers handled 14.3 million operations in 2014, including 1.8 million commercial operations.
- The Core airports¹ enplaned 539.0 million passengers in 2014. These airports are projected to enplane 907.8 million passengers in 2040, a 68.4 percent increase over the forecast period (or 2.0 percent annually).
- The 30 large hub airports² enplaned 545.0 million passengers in 2014. These airports are projected to enplane 919.0 million passengers in 2040, a 68.6 percent increase over the 26-year period (or 2.0 percent annually).
- The 31 medium hub airports³ recorded 116.3 million enplanements in 2014. These airports are projected to enplane 196.6 million passengers in 2040, a 69.1 percent increase over the 26-year period (or 2.0 percent annually).
- Atlanta (46.2 million enplanements), Los Angeles (33.9 million), Chicago O'Hare (33.3 million), Dallas/Ft. Worth (30.3 million), and Denver (26.0 million) led U.S. commercial airports in passenger enplanements, accounting for 22.5 percent of enplanements at U.S. airports.
- Atlanta is projected to remain the country's busiest airport, as measured by passenger enplanements, through the forecast period with a projected 78.2 million enplaned passengers in 2040. Los Angeles is projected to enplane the second most passengers (56.3 million) in 2040, followed by Chicago O'Hare with 52.8 million enplanements.
- Enplanements at Seattle, Ft. Lauderdale, and Orlando airports are projected to grow fastest among the Core airports. The annual growth rates at these airports

¹ The large hub airports (except Portland) plus Memphis.

² Airports enplaning one percent or more of total enplanements.

³ Airports enplaning 0.25 to 0.99 percent of total enplanements.

are forecast to increase by 2.7, 2.6, and 2.5 percent per year, respectively, over the forecast period.

- In terms of total operations, Chicago O'Hare was the busiest U.S. airport in 2014 with 879,000 aircraft operations. Atlanta and Dallas/Ft. Worth were the second and third busiest airports with 876,000 and 674,000 operations, respectively.
- In 2040, Atlanta is expected to be the busiest airport in the nation, as measured by total operations, with a projected 1.38 million operations. Chicago O'Hare (1.20 million operations) is projected to drop to second place and Dallas/Ft. Worth (1.05 million operations) is projected to remain in third place.
- The FAA's Southern region airports enplaned more passengers than any other region with 173.8 million passengers in 2014, or 23 percent of U.S. enplanements. The Western Pacific region was second with 154.9 million enplanements, or 21 percent of the total.
- The Southern region is expected to lead in passenger enplanements in 2040, reaching 297.6 million. The Western Pacific region is projected to stay in second place with 263.3 million enplanements.
- The Southern region led all FAA regions in the number of airport operations with 22.2 million in 2014. The Southern region is expected to remain first in 2040 with 26.3 million operations. The Western Pacific and Great Lakes regions ran second and third in airport operations in 2014 with 16.7 and 14.9 million, respectively. In 2040, the Western Pacific region is projected to remain in second place with 19.5 million operations and the Great Lakes region is projected to remain in third place with 17.0 million operations.

Forecast Process

Introduction

The Terminal Area Forecast (TAF) contains historical and forecast data for enplanements, airport operations, tracon operations, and based aircraft. The data cover 264 FAA towered airports, 252 Federal contract tower airports, 31 terminal radar approach control facilities, and 2,818 non FAA airports. Data in the TAF are presented on a U.S. Government fiscal year basis (October through September).

The TAF is available on the Internet. The TAF model and TAF database can be accessed at:

http://www.faa.gov/data_research/aviation/taf/.

The TAF model allows users to create their own forecast scenarios. The TAF database allows public access to historical and forecast aviation activity data by individual airport, state, or FAA region. In addition, links to the TAF from previous years are available via the address noted above.

The TAF is prepared to assist the FAA in meeting its planning, budgeting, and staffing requirements. In addition, state aviation authorities and other aviation planners use the TAF as a basis for planning airport improvements.

This document presents a set of summary tables on airport activity statistics. The airport activity data contained in the TAF consist of the following:

- **enplanements** (sum of originating and connecting passengers) for air carriers and regionals;
- **itinerant operations** for air carriers, commuters and air taxis, general aviation (GA), and military aircraft;
- **local operations** for civil and military aircraft; and
- **tracon operations** for aircraft operations under radar control.

Data on operations presented in the TAF show historical information from 1990 through 2014 and forecasts for 2015 to 2040.⁴ The historical enplanement information in the TAF model is from 1976 through 2014 and the 2015 figures represent estimates. The enplanement forecasts are from 2016 to 2040. Appendix A provides a detailed description of the activity data elements in the TAF. Appendix B provides a list of FAA airports by hub size and a list of FAA contract towers.

⁴ Operations data for FAA towers and Federal contract towers for 2015 are actual.

Forecast Method

The TAF assumes a demand driven forecast for aviation services based upon local and national economic conditions as well as conditions within the aviation industry. In other words, an airport's forecast is developed independent of the ability of the airport and the air traffic control system to furnish the capacity required to meet demand. However, if the airport historically functions under constrained conditions, the FAA forecast may reflect those constraints since they are embedded in historical data. In statistical terms, the relationships between economic growth data and data representing growth in aviation activity reflect those constraints.

The forecasts of passenger enplanements and commercial operations at airports with more than 100,000 enplanements in FY 2014 are based on a bottoms-up approach. The domestic enplanements are forecast by generating origin and destination (O&D) market demand forecasts using the DB1B (quarterly 10% sample) data to model passenger flow on a quarterly basis. The O&D passenger demand forecasts are based on regression analysis using fares, regional demographics, and regional economic factors as the independent variables. The O&D forecasts are then combined with DOT T-100 segment data to generate passenger forecasts by airport pair and segment pair. The segment pair passenger forecasts are assigned to aircraft equipment in order to produce segment pair operation forecasts. The quarterly segment pair forecasts are aggregated to produce annual airport forecasts.

Separate models are used to forecast international passenger enplanements and operations and cargo operations. The international passenger enplanements are forecast on a quarterly basis using time series analysis and T-100 segment data. The segment pair passenger enplanement forecasts are used to generate segment pair operation forecasts. The cargo operation forecasts are also generated on a quarterly basis using time series analysis and T-100 segment data. The segment pair forecasts for international passenger enplanements and operations and cargo operations are aggregated to the market pair and airport level on an annual basis.

The short run (2 year) forecasts of passenger enplanements and operations for airports with more than 100,000 enplanements in FY 2014 are produced using models at the airport level. These models incorporate the use of future airline schedules.

The forecasts of passenger enplanements at FAA facilities with fewer than 100,000 enplanements in FY 2014 are based on analysis of historic trends. The commercial operations forecasts are based on the enplanement forecasts, trend analysis, and enplanements per operation. In addition the commercial forecasts for these airports may be prorated in comparison to national forecast trends by category.

Forecasts of itinerant general aviation operations and local civil operations at FAA facilities are based primarily on time series analysis. Because military operations forecasts have national security implications, the Department of Defense (DOD) provides only limited information on future aviation activity. Hence, the TAF projects military activity at its present level except when FAA has specific knowledge of a change. For instance, DOD may announce a base closing or may shift an Air Force wing from one base to another.

For non-FAA facilities, historic operations in the TAF are from the Form 5010 data. These operations levels are held constant for the forecast unless otherwise specified by a local or regional FAA official.

Forecast Review Process

Initially, FAA headquarters staff and management review forecasts for airports with more than 100,000 enplanements in FY 2014 and FAA facilities with fewer than 100,000 enplanements in FY 2014. These preliminary estimates are then submitted to FAA regional and district offices for review. Suggested changes made by the FAA regional staff are reviewed and, if determined reasonable by APO staff economists, are incorporated into the TAF. Significant increases in commercial activity forecasts are normally incorporated into the TAF only where APO receives verifiable evidence of a firm commitment by an air carrier or regional airline to initiate new service.

Summary statistics presented in the TAF differ from the national totals contained in FAA Aerospace Forecasts, Fiscal Years 2016-2036. Reasons for the differences are threefold. First, the TAF forecast methods consider airport and market specific trends. Second, the TAF and national forecast measurements vary. For example, the TAF includes facilities not serviced by the FAA in its totals. These facilities make up a large share of total general aviation operations. In addition, the TAF includes enplanements at U.S. airports only, whereas the national forecast includes enplanements on U.S. airlines at both U.S. and foreign airports. Finally, individual forecasts are not scaled to force aggregates to equal national totals.

Data Sources

The development of the TAF begins with an update of the latest historical enplanement, operation, and based aircraft statistics, using information derived from several sources. FAA's National Flight Data Center provides general airport information such as the airport name, location, and location identifier. Airport operations and tracon (radar assisted) operations data for airports with FAA and Federal contract air traffic control services are reported by FAA air traffic and Federal contract tower staff. Operations at non FAA airports are taken from FAA Form 5010 reports on aviation activity at the

airport as estimated by FAA inspectors or information provided by airport managers, state aviation activity surveys, and other sources.

U.S. domestic and international (U.S. and foreign flag carriers) enplanements are derived from the Department of Transportation's (DOT's) T-100 database. Regional carrier enplanements are derived from DOT T-100 and 298-C data.⁵

The origin and destination (O&D) data are based on the Airline Origin and Destination Survey (DB1B). This is a 10 percent sample of airline tickets from carriers reporting to the Office of Airline Information at the Bureau of Transportation Statistics.

Based aircraft data are collected by FAA inspectors, airport managers, and state aviation officials and reported on FAA Form 5010. These data show numbers of aircraft, mostly general aviation aircraft, permanently based at an airport.

⁵ In October 2002, DOT began collecting data for all airlines using the T-100 format. This change provides more detail on regional airlines, who previously reported on Form 298-C.

TAF and National Forecast Summary

Near-Term Forecasts

In 2015 total operations at FAA and contract towers increased 0.2 percent, commercial operations increased 0.9 percent, and non-commercial operations decreased 0.3 percent based on OPSNET. Total enplanements at all airports were estimated to increase 3.7 percent in 2015.

In 2016 total operations at towers are forecast to increase 0.9 percent. This forecast increase in total operations at FAA and contract towers is attributable to forecast increases in air carrier (5.4 percent), itinerant general aviation (0.1 percent), and local civil operations (0.7 percent). The forecast increase in air carrier operations (aircraft with more than 60 seats) is attributable, in part, to a shift away from air taxi/commuter operations (aircraft with 60 or fewer seats) as a result of the substitution of larger aircraft for smaller regional jets. Total enplanements at all airports are forecast to increase 2.9 percent in 2016.

National Forecast Trends

Trends at individual airports reflect to varying degrees national aviation trends as well as the dynamics at individual airports. The national forecasts for FAA and contract towered airports in FAA Aerospace Forecasts, Fiscal Years 2016-2036 show aircraft operations growing at an average annual rate of 0.9 percent over the 21-year forecast period. Average annual growth rates for this period by user group are as follows: air carrier, 2.6 percent; air taxi/commuter, -1.1 percent; itinerant general aviation, 0.3 percent; and local civil, 0.4 percent. The projected average annual rate of increase for enplanements on U.S. mainline and regional carriers from the national forecast is 2.0 percent over the 21-year forecast period.

Trends by Region

There are 264 FAA towers and 252 Federal contract towers in the TAF. California had the most FAA towers with 33, followed by Texas with 19 and Florida with 18. Regions with the most FAA towers were Southern with 51, Great Lakes with 48, and Western Pacific with 46. Table S-3 presents the number of FAA and Federal contract towers by region and state.

Tables S-6 through S-11 summarize airport operations, tracon operations, enplanements, and based aircraft by region from 2011 through 2040. The Southern (22.2 million operations), Western Pacific (16.7 million), and Great Lakes (14.9 million) regions ranked as the top three FAA regions in airport operations in 2014. Operations

for all TAF airports totaled 97.4 million. The Northwest Mountain and Southwest regions are projected to be the fastest growing FAA regions from 2014 to 2040 in terms of airport operations, increasing 32 percent and 20 percent, respectively.

The Southern region led FAA regions in passengers enplaned with 173.8 million in 2014, followed by the Western Pacific region with 154.9 million passengers. Enplanements in the Northwest Mountain region are projected to increase the most in percentage terms increasing 75 percent from 2014 to 2040. The next two regions with the fastest projected increase in enplanements are New England (71 percent) and Southern (71 percent).

In 2014, there was a national total of 170,000 based aircraft. Southern (32,200 aircraft), Western Pacific (28,500), and Great Lakes (27,600) ranked as the top three FAA regions.

Large, Medium, and Small Hubs

Table S-5 presents passenger enplanements and airport operations at FAA and contract towers by hub size. An airport qualifies as a large hub with one percent or more of total U.S. passenger enplanements. A medium hub airport enplanes from 0.25 to 0.99 percent of total U.S. passenger enplanements while small and non-hub airports enplane from 0.05 to 0.249 percent and less than 0.05 percent, respectively. Appendix B contains a list of hub airports classified by size (large, medium, small, and non-hub) as well as a list of Federal contract towers.

The 30 large hub airports enplaned 545.0 million passengers in 2014 while the 31 medium and 74 small hub airports enplaned 116.3 and 65.4 million passengers, respectively. The 381 non-hub airports enplaned 22.0 million passengers. Enplanements at large hubs are expected to increase at an annual rate of 2.0 percent over the 2014 to 2040 forecast period. Medium and small hub airports are forecast to increase 2.0 percent and 1.7 percent annually, respectively, during the forecast period.

Operations at large hub airports totaled 12.5 million compared to 4.6 million and 6.8 million at medium and small hub airports, respectively. Operations at large hub airports are forecast to increase at an annual rate of 1.6 percent from 2014 to 2040, growing to 18.9 million. Operations at the medium hubs are forecast to rise at an annual rate of 1.3 percent from 2014 to 2040; aircraft operations at small hub airports are forecast to grow 0.8 percent per year.

Non-hub airports accounted for 25.8 million operations or 52 percent of total operations at FAA and Federal contract towers. General aviation aircraft operations accounted for the majority of operations at these smaller airports.

Core Airports

Table S-1 presents enplanement forecast summaries for the Core airports. Atlanta was the busiest airport in 2014 (46.2 million enplanements), followed by Los Angeles (33.9 million), Chicago O'Hare (33.3 million), and Dallas/Ft. Worth (30.3 million). Atlanta and Los Angeles are forecast to have the strongest growth in enplanements among the top four airports, increasing at an annual rate of 2.0 percent over the 2014 to 2040 forecast period. Dallas/Ft. Worth and Chicago O'Hare are forecast to increase 1.9 and 1.8 percent per year, respectively, over the forecast period. Graph S-1 shows relative enplanements growth over the next 26 years. The four airports with the fastest projected increase are Seattle, Ft. Lauderdale, Orlando, and Boston.

Seattle is projected to make the largest upward movement in ranking of enplanements, from 14th to 9th. LaGuardia is projected to make the largest drop in rankings, going from 20th to 25th.

Table S-2 presents operations forecast summaries for the Core airports. In 2014, FAA controllers at Chicago O'Hare handled 879,000 landings and takeoffs, followed by Atlanta, which totaled 876,000 operations. The next busiest airports were Dallas/Ft. Worth and Los Angeles with 674,000 and 633,000 airport operations, respectively.

In 2040, Atlanta is projected to move into first place with 1.38 million operations. Chicago O'Hare (1.20 million operations) is projected to drop to second place. Dallas/Ft. Worth (1.05 million operations) and Los Angeles (1.01 million operations) are projected to remain in third and fourth place, respectively.

Graph S-2 shows that the five airports projected to grow the fastest in operations are Seattle, Orlando, John F. Kennedy, Ft. Lauderdale, and Miami. John F. Kennedy is expected to move into the list of the top 10 busiest airports; San Francisco is expected to drop out of the top 10 ranking.

TAF and National Forecast Tables

Table S-1 Enplanements at Core Airports (in thousands)

Loc ID	Region	Airport Name	2014					Rate**		Airport ranking	
			2014	Percent*	2015	2019	2040	2014-2040	2014	2040	
ATL	ASO	HARTSFIELD - JACKSON ATLANTA INTL	46,227	6.13	48,208	53,430	78,221	2.04	1	1	
LAX	AWP	LOS ANGELES INTL	33,921	4.50	35,425	39,344	56,338	1.97	2	2	
ORD	AGL	CHICAGO O'HARE INTL	33,322	4.42	35,051	37,046	52,837	1.78	3	3	
DFW	ASW	DALLAS/FORT WORTH INTL	30,319	4.02	30,958	32,755	49,590	1.91	4	4	
DEN	ANM	DENVER INTL	25,980	3.44	25,669	28,319	42,524	1.91	5	6	
JFK	AEA	JOHN F KENNEDY INTL	25,909	3.44	27,083	30,207	46,149	2.24	6	5	
SFO	AWP	SAN FRANCISCO INTL	22,571	2.99	23,555	26,013	38,650	2.09	7	7	
CLT	ASO	CHARLOTTE/DOUGLAS INTL	21,529	2.85	21,583	22,900	33,949	1.76	8	12	
LAS	AWP	MC CARRAN INTL	20,265	2.69	21,117	24,062	37,605	2.40	9	8	
PHX	AWP	PHOENIX SKY HARBOR INTL	20,030	2.65	21,037	22,534	34,326	2.09	10	10	
IAH	ASW	GEORGE BUSH INTERCONTINENTAL/HOUSTON	19,494	2.58	20,008	20,751	33,370	2.08	11	13	
MIA	ASO	MIAMI INTL	19,479	2.58	20,207	22,366	34,019	2.16	12	11	
EWR	AEA	NEWARK LIBERTY INTL	17,551	2.33	18,344	20,222	30,979	2.20	13	15	
SEA	ANM	SEATTLE-TACOMA INTL	17,414	2.31	19,561	23,437	35,159	2.73	14	9	
MCO	ASO	ORLANDO INTL	17,057	2.26	18,190	21,112	32,642	2.52	15	14	
MSP	AGL	MINNEAPOLIS-ST PAUL INTL/WOLD-CHAMBERLAIN	16,839	2.23	17,286	18,725	26,373	1.74	16	17	
DTW	AGL	DETROIT METROPOLITAN WAYNE COUNTY	15,777	2.09	15,985	17,651	24,354	1.68	17	18	
BOS	ANE	GENERAL EDWARD LAWRENCE LOGAN INTL	15,229	2.02	15,998	18,596	28,518	2.44	18	16	
PHL	AEA	PHILADELPHIA INTL	14,745	1.95	14,847	15,821	22,800	1.69	19	19	
LGA	AEA	LA GUARDIA	13,324	1.76	13,898	14,584	16,007	0.70	20	25	
FLL	ASO	FORT LAUDERDALE/HOLLYWOOD INTL	11,724	1.55	12,760	14,822	22,755	2.58	21	20	
BWI	AEA	BALTIMORE/WASHINGTON INTL THURGOOD MARSHALL	10,956	1.45	11,319	12,897	18,717	2.08	22	21	
IAD	AEA	WASHINGTON DULLES INTL	10,416	1.38	10,231	10,438	16,055	1.67	23	24	
MDW	AGL	CHICAGO MIDWAY INTL	10,202	1.35	10,618	11,317	16,354	1.83	24	23	
SLC	ANM	SALT LAKE CITY INTL	9,980	1.32	10,422	11,257	17,077	2.08	25	22	
DCA	AEA	RONALD REAGAN WASHINGTON NATIONAL	9,825	1.30	10,902	11,990	15,108	1.66	26	27	
HNL	AWP	HONOLULU INTL	9,422	1.25	9,359	9,774	13,437	1.37	27	29	
SAN	AWP	SAN DIEGO INTL	9,190	1.22	9,720	10,648	15,955	2.14	28	26	
TPA	ASO	TAMPA INTL	8,449	1.12	8,935	9,852	14,837	2.18	29	28	
MEM	ASO	MEMPHIS INTL	1,830	0.24	1,824	2,120	3,058	1.99	30	30	
Totals			538,976	71.41	560,100	614,990	907,763	2.02			

*Percent of total US enplanements.

**Annual compound growth rate.

Graph S-1 Enplanements Growth Rates for the Core Airports Fiscal Years 2014 to 2040

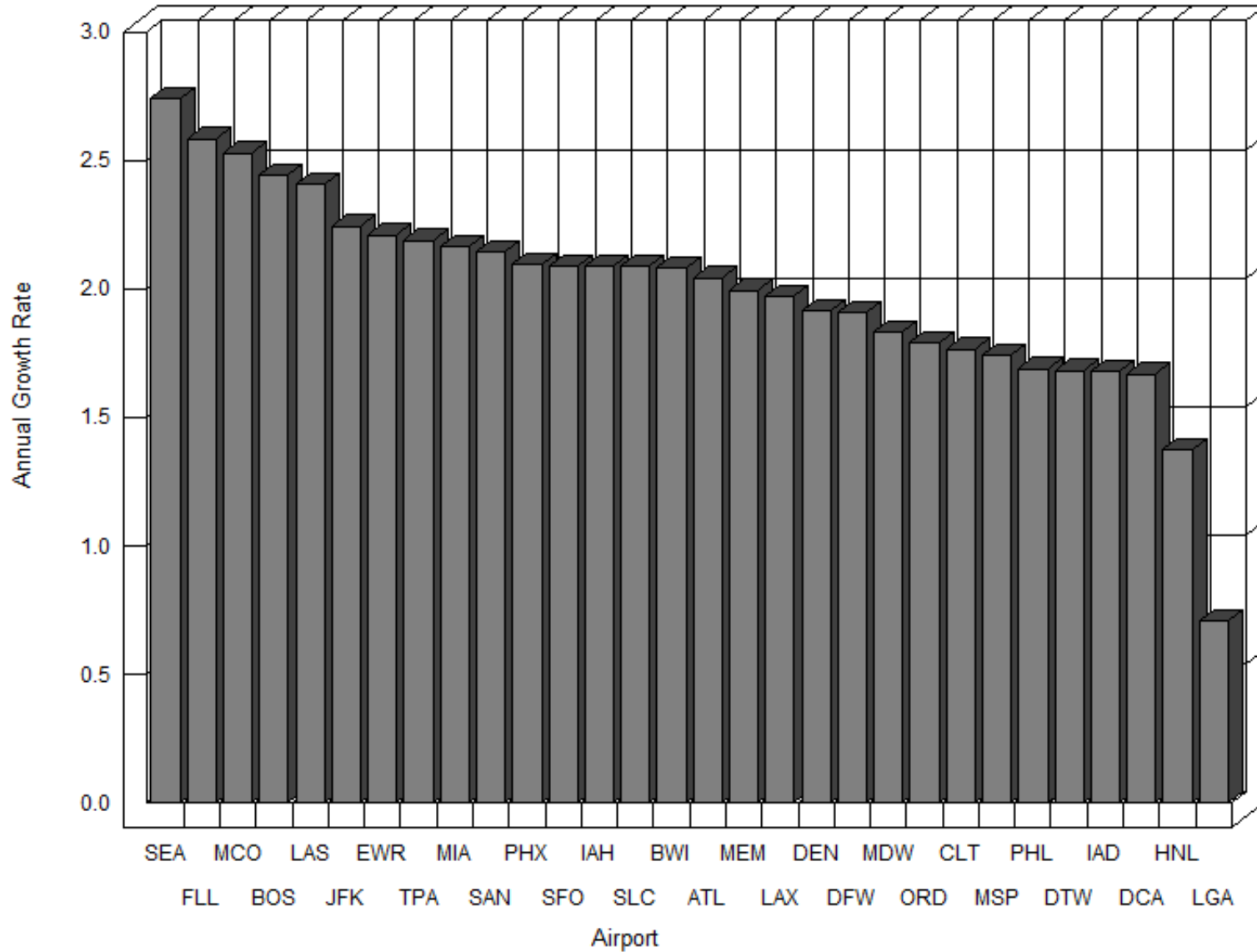


Table S-2 Airport Operations at the Core Airports (in thousands)

Loc ID	Region	Airport Name	2014					Rate**	Airport ranking	
			2014	Percent*	2015	2019	2040	2014-2040	2014	2040
ORD	AGL	CHICAGO O'HARE INTL	879	0.90	881	891	1,197	1.19	1	2
ATL	ASO	HARTSFIELD - JACKSON ATLANTA INTL	876	0.89	877	958	1,376	1.75	2	1
DFW	ASW	DALLAS/FORT WORTH INTL	674	0.69	684	720	1,045	1.70	3	3
LAX	AWP	LOS ANGELES INTL	633	0.65	648	706	1,015	1.82	4	4
DEN	ANM	DENVER INTL	579	0.59	551	590	870	1.57	5	5
CLT	ASO	CHARLOTTE/DOUGLAS INTL	547	0.56	546	572	788	1.41	6	7
LAS	AWP	MC CARRAN INTL	523	0.53	521	571	823	1.76	7	6
IAH	ASW	GEORGE BUSH INTERCONTINENTAL/HOUSTON	504	0.51	508	502	765	1.62	8	8
SFO	AWP	SAN FRANCISCO INTL	432	0.44	429	447	639	1.52	9	13
PHX	AWP	PHOENIX SKY HARBOR INTL	430	0.44	438	473	691	1.83	10	10
JFK	AEA	JOHN F KENNEDY INTL	426	0.43	443	498	757	2.24	11	9
PHL	AEA	PHILADELPHIA INTL	420	0.43	413	429	571	1.18	12	18
MSP	AGL	MINNEAPOLIS-ST PAUL INTL/WOLD-CHAMBERLAIN	418	0.42	405	422	576	1.24	13	17
EWR	AEA	NEWARK LIBERTY INTL	404	0.41	414	438	619	1.65	14	14
MIA	ASO	MIAMI INTL	401	0.41	409	456	690	2.11	15	11
DTW	AGL	DETROIT METROPOLITAN WAYNE COUNTY	400	0.41	380	419	590	1.50	16	16
LGA	AEA	LA GUARDIA	370	0.38	369	387	387	0.17	17	24
BOS	ANE	GENERAL EDWARD LAWRENCE LOGAN INTL	369	0.37	372	419	596	1.86	18	15
SEA	ANM	SEATTLE-TACOMA INTL	332	0.34	372	448	653	2.63	19	12
SLC	ANM	SALT LAKE CITY INTL	325	0.33	315	324	446	1.22	20	20
IAD	AEA	WASHINGTON DULLES INTL	319	0.32	299	300	429	1.14	21	22
HNL	AWP	HONOLULU INTL	306	0.31	314	318	411	1.13	22	23
MCO	ASO	ORLANDO INTL	295	0.30	311	351	533	2.29	23	19
DCA	AEA	RONALD REAGAN WASHINGTON NATIONAL	287	0.29	296	307	308	0.27	24	28
FLL	ASO	FORT LAUDERDALE/HOLLYWOOD INTL	255	0.26	275	307	445	2.17	25	21
MDW	AGL	CHICAGO MIDWAY INTL	249	0.25	254	266	361	1.44	26	26
BWI	AEA	BALTIMORE/WASHINGTON INTL THURGOOD MARSHALL	247	0.25	245	273	384	1.70	27	25
MEM	ASO	MEMPHIS INTL	220	0.22	220	230	320	1.44	28	27
SAN	AWP	SAN DIEGO INTL	189	0.19	195	210	308	1.89	29	29
TPA	ASO	TAMPA INTL	184	0.18	190	203	294	1.81	30	30
Totals			12,493	12.70	12,574	13,435	18,887	1.60		

*Percent of total US operations.

**Annual compound growth rate.

Graph S-2 Airport Operations Growth Rates for the Core Airports Fiscal Years 2014 to 2040

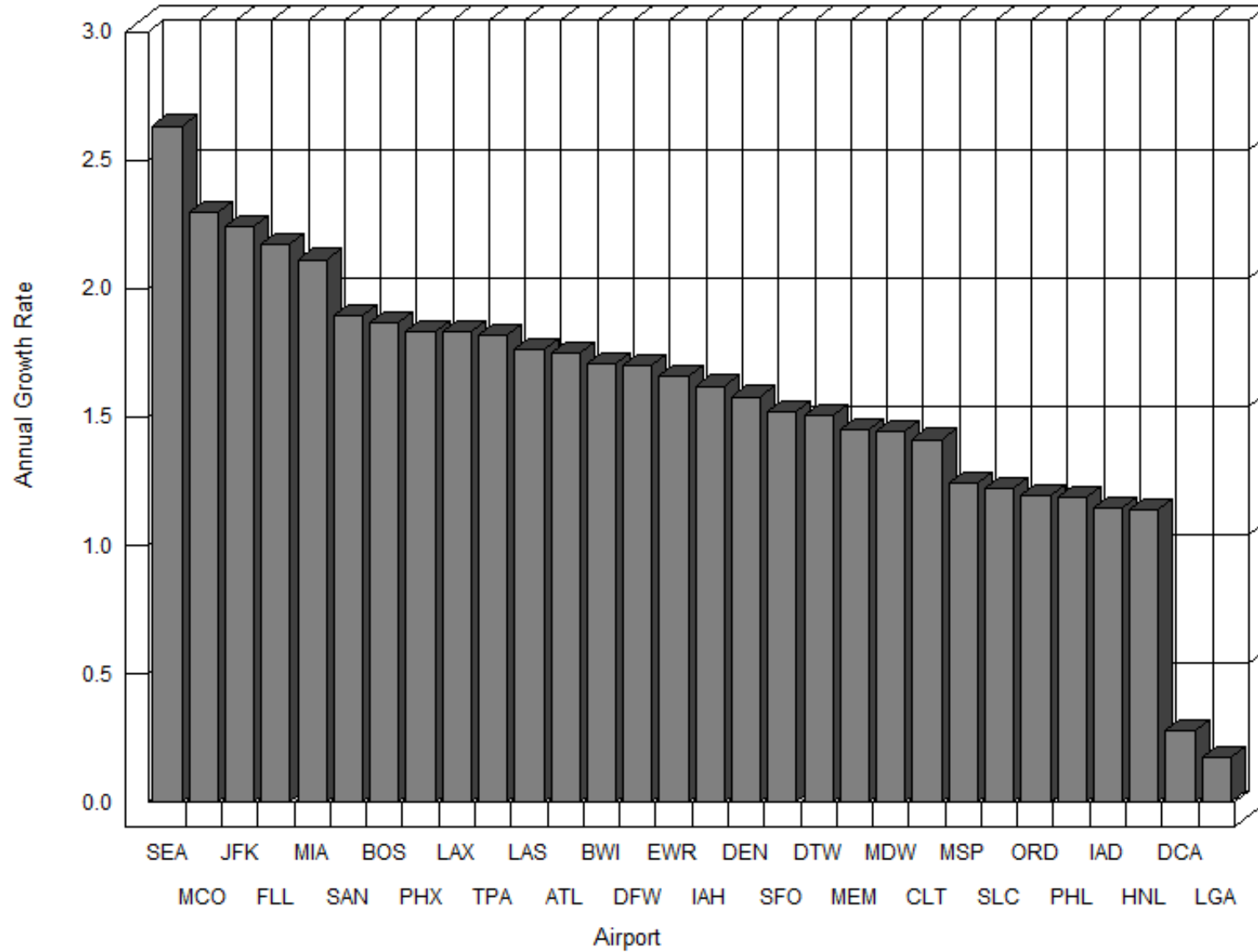


Table S-3 Air Traffic Control Towers and Contract Towers by Region and State

Region/State	FAA Towers	Contract Towers
Alaskan Region		
Alaska	4	4
Regional Total	4	4
Central Region		
Iowa	4	1
Kansas	1	8
Missouri	5	5
Nebraska	2	1
Regional Total	12	15
Eastern Region		
Delaware	1	0
District of Columbia	3	0
Maryland	2	5
New Jersey	5	1
New York	12	5
Pennsylvania	9	5
Virginia	4	2
West Virginia	3	4
Regional Total	39	22
Great Lakes Region		
Illinois	11	6
Indiana	6	4
Michigan	11	4
Minnesota	6	2
North Dakota	3	1
Ohio	7	5
South Dakota	1	1
Wisconsin	3	9
Regional Total	48	32
New England Region		
Connecticut	1	6
Maine	2	0
Massachusetts	3	8
New Hampshire	1	2
Rhode Island	1	0
Vermont	1	0
Regional Total	9	16

Region/State	FAA Towers	Contract Towers
Northwest Mountain Region		
Colorado	6	3
Idaho	2	4
Montana	3	3
Oregon	3	7
Utah	1	2
Washington	6	7
Wyoming	1	2
Regional Total	22	28
Southern Region		
Alabama	4	3
Florida	18	25
Georgia	5	6
Kentucky	4	2
Mississippi	2	7
North Carolina	6	5
Puerto Rico	1	2
South Carolina	5	4
Tennessee	5	3
Virgin Islands	1	1
Regional Total	51	58
Southwestern Region		
Arkansas	2	5
Louisiana	7	5
New Mexico	2	4
Oklahoma	3	6
Texas	19	23
Regional Total	33	43
Western Pacific Region		
Arizona	7	7
California	33	20
Guam	0	1
Hawaii	3	4
Nevada	3	1
Northern Mariana Isl	0	1
Regional Total	46	34
Grand Total	264	252

Table S-4 Ranking of Top 100 FAA Towers by Total Enplanements, FY 2014

Rank	City	State	Location Identifier	Enplaned Passengers*	Percent of Total**	Cumulative Enplanements	Cumulative Percentage	Commercial Operations***	Cumulative Operations
1	ATLANTA	GA	ATL	46,226,883	6.13	46,226,883	6.13	868,547	868,547
2	LOS ANGELES	CA	LAX	33,920,890	4.50	80,147,773	10.64	612,873	1,481,420
3	CHICAGO	IL	ORD	33,322,123	4.42	113,469,896	15.06	871,638	2,353,058
4	DALLAS-FORT WORTH	TX	DFW	30,318,969	4.02	143,788,865	19.09	666,257	3,019,315
5	DENVER	CO	DEN	25,979,988	3.44	169,768,853	22.54	574,317	3,593,632
6	NEW YORK	NY	JFK	25,908,734	3.44	195,677,587	25.98	417,975	4,011,607
7	SAN FRANCISCO	CA	SFO	22,571,283	2.99	218,248,870	28.98	416,056	4,427,663
8	CHARLOTTE	NC	CLT	21,528,753	2.85	239,777,623	31.84	519,160	4,946,823
9	LAS VEGAS	NV	LAS	20,265,489	2.69	260,043,112	34.53	469,499	5,416,322
10	PHOENIX	AZ	PHX	20,030,285	2.65	280,073,397	37.19	407,522	5,823,844
11	HOUSTON	TX	IAH	19,494,062	2.58	299,567,459	39.78	491,539	6,315,383
12	MIAMI	FL	MIA	19,479,065	2.58	319,046,524	42.36	381,609	6,696,992
13	NEWARK	NJ	EWR	17,550,823	2.33	336,597,347	44.69	393,095	7,090,087
14	SEATTLE	WA	SEA	17,413,997	2.31	354,011,344	47.00	328,274	7,418,361
15	ORLANDO	FL	MCO	17,056,548	2.26	371,067,892	49.27	279,487	7,697,848
16	MINNEAPOLIS	MN	MSP	16,838,805	2.23	387,906,697	51.51	403,891	8,101,739
17	DETROIT	MI	DTW	15,776,910	2.09	403,683,607	53.60	393,268	8,495,007
18	BOSTON	MA	BOS	15,229,066	2.02	418,912,673	55.62	352,435	8,847,442
19	PHILADELPHIA	PA	PHL	14,744,570	1.95	433,657,243	57.58	405,770	9,253,212
20	NEW YORK	NY	LGA	13,324,196	1.76	446,981,439	59.35	363,316	9,616,528
21	FORT LAUDERDALE	FL	FLL	11,723,833	1.55	458,705,272	60.91	218,797	9,835,325
22	BALTIMORE	MD	BWI	10,955,816	1.45	469,661,088	62.36	228,226	10,063,551
23	WASHINGTON	DC	IAD	10,415,850	1.38	480,076,938	63.75	278,417	10,341,968
24	CHICAGO	IL	MDW	10,202,117	1.35	490,279,055	65.10	211,190	10,553,158
25	SALT LAKE CITY	UT	SLC	9,980,042	1.32	500,259,097	66.43	264,679	10,817,837
26	WASHINGTON	DC	DCA	9,825,263	1.30	510,084,360	67.73	279,931	11,097,768
27	HONOLULU	HI	HNL	9,422,406	1.25	519,506,766	68.98	234,594	11,332,362
28	SAN DIEGO	CA	SAN	9,190,322	1.22	528,697,088	70.20	179,690	11,512,052
29	TAMPA	FL	TPA	8,448,779	1.12	537,145,867	71.32	162,059	11,674,111
30	PORTLAND	OR	PDX	7,842,533	1.04	544,988,400	72.36	194,981	11,869,092
31	ST LOUIS	MO	STL	6,131,193	0.81	551,119,593	73.18	174,267	12,043,359
32	HOUSTON	TX	HOU	5,796,332	0.76	556,915,925	73.95	149,964	12,193,323
33	NASHVILLE	TN	BNA	5,308,229	0.70	562,224,154	74.65	142,761	12,336,084
34	AUSTIN	TX	AUS	5,133,878	0.68	567,358,032	75.34	120,999	12,457,083
35	OAKLAND	CA	OAK	4,959,534	0.65	572,317,566	75.99	125,416	12,582,499
36	KANSAS CITY	MO	MCI	4,925,002	0.65	577,242,568	76.65	122,695	12,705,194
37	NEW ORLEANS	LA	MSY	4,785,909	0.63	582,028,477	77.28	110,382	12,815,576
38	RALEIGH/DURHAM	NC	RDU	4,616,354	0.61	586,644,831	77.90	135,699	12,951,275
39	SANTA ANA	CA	SNA	4,556,168	0.60	591,200,999	78.50	94,633	13,045,908
40	SAN JOSE	CA	SJC	4,546,045	0.60	595,747,044	79.11	110,982	13,156,890

Table S-4 Ranking of Top 100 FAA Towers by Total Enplanements, FY 2014

Rank	City	State	Location Identifier	Enplaned Passengers*	Percent of Total**	Cumulative Enplanements	Cumulative Percentage	Commercial Operations***	Cumulative Operations
41	SACRAMENTO	CA	SMF	4,338,637	0.57	600,085,681	79.68	95,496	13,252,386
42	SAN JUAN	PR	SJU	4,160,003	0.55	604,245,684	80.23	130,527	13,382,913
43	DALLAS	TX	DAL	4,157,154	0.55	608,402,838	80.79	118,457	13,501,370
44	SAN ANTONIO	TX	SAT	4,049,550	0.53	612,452,388	81.32	115,086	13,616,456
45	FORT MYERS	FL	RSW	3,895,910	0.51	616,348,298	81.84	68,888	13,685,344
46	CLEVELAND	OH	CLE	3,895,511	0.51	620,243,809	82.36	138,348	13,823,692
47	PITTSBURGH	PA	PIT	3,812,558	0.50	624,056,367	82.86	118,077	13,941,769
48	INDIANAPOLIS	IN	IND	3,593,746	0.47	627,650,113	83.34	135,824	14,077,593
49	MILWAUKEE	WI	MKE	3,255,921	0.43	630,906,034	83.77	99,826	14,177,419
50	COLUMBUS	OH	CMH	3,102,511	0.41	634,008,545	84.19	103,540	14,280,959
51	KAHULUI	HI	OGG	2,960,703	0.39	636,969,248	84.58	107,708	14,388,667
52	WEST PALM BEACH	FL	PBI	2,899,497	0.38	639,868,745	84.96	77,863	14,466,530
53	WINDSOR LOCKS	CT	BDL	2,892,228	0.38	642,760,973	85.35	79,359	14,545,889
54	COVINGTON	KY	CVG	2,817,237	0.37	645,578,210	85.72	127,768	14,673,657
55	JACKSONVILLE	FL	JAX	2,576,796	0.34	648,155,006	86.06	69,704	14,743,361
56	BUFFALO	NY	BUF	2,425,809	0.32	650,580,815	86.39	73,526	14,816,887
57	ALBUQUERQUE	NM	ABQ	2,384,366	0.31	652,965,181	86.70	81,177	14,898,064
58	ANCHORAGE	AK	ANC	2,331,137	0.30	655,296,318	87.01	179,061	15,077,125
59	OMAHA	NE	OMA	2,018,566	0.26	657,314,884	87.28	69,625	15,146,750
60	ONTARIO	CA	ONT	2,013,354	0.26	659,328,238	87.55	67,218	15,213,968
61	BURBANK	CA	BUR	1,916,918	0.25	661,245,156	87.80	61,269	15,275,237
62	MEMPHIS	TN	MEM	1,830,244	0.24	663,075,400	88.05	195,554	15,470,791
63	OKLAHOMA CITY	OK	OKC	1,829,831	0.24	664,905,231	88.29	59,627	15,530,418
64	PROVIDENCE	RI	PVD	1,793,153	0.23	666,698,384	88.53	44,998	15,575,416
65	LOUISVILLE	KY	SDF	1,654,189	0.21	668,352,573	88.75	133,388	15,708,804
66	RICHMOND	VA	RIC	1,647,904	0.21	670,000,477	88.97	65,344	15,774,148
67	RENO	NV	RNO	1,609,450	0.21	671,609,927	89.18	47,016	15,821,164
68	TUCSON	AZ	TUS	1,580,741	0.20	673,190,668	89.39	49,879	15,871,043
69	NORFOLK	VA	ORF	1,512,223	0.20	674,702,891	89.59	53,886	15,924,929
70	CHARLESTON	SC	CHS	1,507,877	0.20	676,210,768	89.79	53,301	15,978,230
71	GUAM	GU	GUM	1,439,378	0.19	677,650,146	89.98	26,212	16,004,442
72	SPOKANE	WA	GEG	1,436,045	0.19	679,086,191	90.17	43,259	16,047,701
73	EL PASO	TX	ELP	1,392,291	0.18	680,478,482	90.36	54,083	16,101,784
74	KAILUA/KONA	HI	KOA	1,387,060	0.18	681,865,542	90.54	46,047	16,147,831
75	LONG BEACH	CA	LGB	1,384,977	0.18	683,250,519	90.72	32,553	16,180,384
76	TULSA	OK	TUL	1,363,696	0.18	684,614,215	90.91	51,581	16,231,965
77	BOISE	ID	BOI	1,349,518	0.17	685,963,733	91.09	46,668	16,278,633
78	LIHUE	HI	LIH	1,303,431	0.17	687,267,164	91.26	89,700	16,368,333
79	BIRMINGHAM	AL	BHM	1,298,859	0.17	688,566,023	91.43	49,200	16,417,533
80	ALBANY	NY	ALB	1,200,254	0.15	689,766,277	91.59	44,890	16,462,423

Table S-4 Ranking of Top 100 FAA Towers by Total Enplanements, FY 2014

Rank	City	State	Location Identifier	Enplaned Passengers*	Percent of Total**	Cumulative Enplanements	Cumulative Percentage	Commercial Operations***	Cumulative Operations
81	ROCHESTER	NY	ROC	1,180,241	0.15	690,946,518	91.75	46,453	16,508,876
82	GRAND RAPIDS	MI	GRR	1,162,367	0.15	692,108,885	91.90	41,229	16,550,105
83	DAYTON	OH	DAY	1,150,047	0.15	693,258,932	92.05	42,224	16,592,329
84	DES MOINES	IA	DSM	1,127,813	0.14	694,386,745	92.20	42,068	16,634,397
85	MANCHESTER	NH	MHT	1,066,804	0.14	695,453,549	92.35	39,527	16,673,924
86	LITTLE ROCK	AR	LIT	1,010,926	0.13	696,464,475	92.48	37,762	16,711,686
87	SYRACUSE	NY	SYR	988,540	0.13	697,453,015	92.61	44,775	16,756,461
88	ORLANDO	FL	SFB	979,332	0.13	698,432,347	92.74	35,331	16,791,792
89	GREER	SC	GSP	940,676	0.12	699,373,023	92.87	34,796	16,826,588
90	PALM SPRINGS	CA	PSP	931,385	0.12	700,304,408	92.99	32,714	16,859,302
91	SAVANNAH	GA	SAV	894,992	0.11	701,199,400	93.11	37,904	16,897,206
92	MYRTLE BEACH	SC	MYR	858,699	0.11	702,058,099	93.22	132,662	17,029,868
93	GREENSBORO	NC	GSO	851,406	0.11	702,909,505	93.34	45,374	17,075,242
94	KNOXVILLE	TN	TYS	844,369	0.11	703,753,874	93.45	41,754	17,116,996
95	PORTLAND	ME	PWM	837,494	0.11	704,591,368	93.56	29,928	17,146,924
96	MADISON	WI	MSN	828,052	0.10	705,419,420	93.67	33,036	17,179,960
97	AKRON	OH	CAK	785,436	0.10	706,204,856	93.77	27,858	17,207,818
98	PENSACOLA	FL	PNS	756,102	0.10	706,960,958	93.87	25,997	17,233,815
99	WICHITA	KS	ICT	754,954	0.10	707,715,912	93.97	38,950	17,272,765
100	WHITE PLAINS	NY	HPN	739,517	0.09	708,455,429	94.07	64,502	17,337,267
Total of airports 101 thru 516				40,169,457	5.365	748,624,886	99.44	4,117,212	21,454,479

*Enplanements include air carrier, commuter and international.

**Percent is of national total enplanements.

***Operations include itinerant air carrier and air taxi only.

Table S-5 Summary of Enplanements and Airport Operations at FAA Towers and Contract Towers

Enplanements at Towered Airports

	Count	2014	2040	Annual Compound Growth Rate 2014-2040
Large Hubs	30	544,988,400	919,039,976	2.03
Medium Hubs	31	116,256,756	196,629,411	2.04
Small Hubs	74	65,390,783	102,061,171	1.72
Non Hub Towers	381	21,988,947	31,258,983	1.36
Total	516	748,624,886	1,248,989,541	1.98

Operations at Towered Airports

	Count	2014	2040	Annual Compound Growth Rate 2014-2040
Large Hubs	30	12,492,382	18,918,436	1.60
Medium Hubs	31	4,571,577	6,465,915	1.34
Small Hubs	74	6,769,418	8,260,444	0.76
Non Hub Towers	381	25,790,516	28,484,067	0.38
Total	516	49,623,893	62,128,862	0.86

Table S-6 Commercial Airport Operations Summary by Region*

Fiscal Year	Alaska (AAL)	Central (ACE)	Eastern (AEA)	Great Lakes (AGL)	New England (ANE)	Northwest Mountain (ANM)	Southern (ASO)	Southwest (ASW)	Western Pacific (AWP)	National Total
Historical										
2011	966,993	753,863	3,752,492	3,930,017	999,862	2,474,806	5,229,181	2,728,233	4,276,445	25,111,892
2012	978,538	750,262	3,748,561	3,801,157	984,577	2,357,975	5,157,408	2,705,244	4,402,743	24,886,465
2013	973,892	728,014	3,650,772	3,769,368	954,733	2,295,774	5,103,800	2,730,735	4,385,286	24,592,374
2014	975,078	722,148	3,584,168	3,672,972	939,378	2,296,273	5,040,093	2,723,520	4,462,686	24,416,316
Forecast										
2015	1,004,919	710,799	3,576,540	3,606,790	918,057	2,279,325	5,251,022	2,713,861	4,551,906	24,613,219
2016	1,012,602	716,428	3,624,701	3,620,855	939,837	2,359,807	5,398,769	2,691,752	4,604,115	24,968,866
2017	1,018,599	725,792	3,684,522	3,669,060	951,871	2,403,140	5,491,298	2,741,073	4,683,219	25,368,574
2018	1,024,568	734,121	3,731,872	3,709,451	962,113	2,442,417	5,573,569	2,785,689	4,759,248	25,723,048
2019	1,030,549	742,538	3,771,852	3,748,782	972,621	2,483,557	5,657,441	2,831,018	4,835,347	26,073,705
2020	1,036,762	752,283	3,814,094	3,795,013	984,587	2,531,145	5,753,423	2,883,195	4,920,723	26,471,225
2021	1,042,901	761,822	3,854,625	3,838,412	995,967	2,575,275	5,847,603	2,934,458	5,005,305	26,856,368
2022	1,048,781	770,099	3,886,250	3,873,168	1,005,650	2,613,781	5,930,805	2,978,795	5,084,886	27,192,215
2023	1,054,576	778,399	3,922,974	3,911,508	1,015,761	2,652,278	6,015,668	3,023,384	5,159,236	27,533,784
2024	1,060,271	787,783	3,971,812	3,961,090	1,028,392	2,693,151	6,108,610	3,072,205	5,234,027	27,917,341
2025	1,065,979	797,238	4,023,411	4,012,941	1,041,376	2,733,212	6,202,909	3,121,961	5,308,905	28,307,932
2026	1,071,931	807,093	4,076,761	4,067,354	1,054,749	2,773,720	6,301,030	3,173,323	5,387,187	28,713,148
2027	1,077,966	817,134	4,130,775	4,122,286	1,069,386	2,816,062	6,400,401	3,224,435	5,465,553	29,123,998
2028	1,083,968	827,049	4,183,685	4,176,008	1,082,921	2,859,299	6,499,330	3,275,507	5,544,529	29,532,296
2029	1,089,913	837,009	4,235,860	4,229,782	1,097,078	2,901,130	6,597,588	3,326,855	5,623,345	29,938,560
2030	1,095,931	847,010	4,288,139	4,283,403	1,110,932	2,942,003	6,696,017	3,378,810	5,702,894	30,345,139
2031	1,101,934	857,123	4,340,052	4,336,564	1,124,337	2,984,521	6,795,516	3,431,269	5,782,204	30,753,520
2032	1,108,019	867,315	4,392,510	4,390,655	1,137,976	3,030,097	6,899,298	3,486,556	5,864,457	31,176,883
2033	1,114,245	878,102	4,446,921	4,447,574	1,152,325	3,074,946	7,007,168	3,543,841	5,948,884	31,614,006
2034	1,120,603	889,359	4,504,208	4,507,049	1,166,830	3,122,507	7,118,538	3,602,964	6,036,548	32,068,606
2035	1,127,176	900,860	4,562,449	4,567,733	1,182,101	3,172,263	7,231,261	3,662,550	6,125,042	32,531,435
2036	1,133,842	912,439	4,621,952	4,629,903	1,197,546	3,221,492	7,344,661	3,721,472	6,214,368	32,997,675
2037	1,140,606	923,950	4,680,311	4,691,544	1,212,279	3,269,157	7,455,814	3,779,759	6,304,492	33,457,912
2038	1,147,548	935,447	4,740,548	4,753,741	1,228,176	3,317,914	7,568,536	3,837,293	6,396,984	33,926,187
2039	1,154,640	946,946	4,799,639	4,815,718	1,243,631	3,368,364	7,680,618	3,894,167	6,486,504	34,390,227
2040	1,161,792	958,497	4,858,518	4,878,156	1,259,019	3,417,786	7,792,382	3,951,388	6,577,258	34,854,796

*Includes air carrier and commuter/air taxi operations at all airports.

Table S-7 Itinerant Airport Operations Summary by Region*

Fiscal Year	Northwest									National Total
	Alaska (AAL)	Central (ACE)	Eastern (AEA)	Great Lakes (AGL)	New England (ANE)	Mountain (ANM)	Southern (ASO)	Southwest (ASW)	Western Pacific (AWP)	
Historical										
2011	1,512,164	2,671,104	7,192,883	9,136,845	2,308,904	6,548,769	14,711,588	7,980,812	10,492,556	62,555,625
2012	1,515,204	2,690,523	7,191,580	8,993,370	2,317,060	6,434,950	14,620,128	7,678,646	10,550,620	61,992,081
2013	1,505,447	2,618,381	6,878,525	8,820,646	2,209,568	6,315,070	14,506,854	7,773,617	10,465,233	61,093,341
2014	1,509,699	2,555,492	6,796,127	8,614,373	2,171,164	6,203,884	14,364,861	7,614,454	10,627,242	60,457,296
Forecast										
2015	1,539,699	2,537,278	6,755,233	8,541,554	2,118,308	6,236,499	14,591,647	7,610,837	10,721,243	60,652,298
2016	1,548,241	2,542,823	6,786,794	8,572,040	2,131,568	6,344,578	14,751,870	7,628,450	10,789,490	61,095,854
2017	1,555,503	2,553,597	6,856,954	8,632,191	2,144,595	6,421,550	14,864,966	7,696,889	10,880,779	61,607,024
2018	1,562,748	2,563,339	6,914,773	8,684,671	2,155,831	6,495,018	14,968,073	7,760,946	10,969,104	62,074,503
2019	1,570,016	2,573,181	6,965,338	8,736,128	2,167,337	6,570,917	15,073,054	7,826,020	11,057,603	62,539,594
2020	1,577,528	2,584,355	7,018,298	8,794,635	2,180,307	6,653,658	15,190,427	7,898,257	11,155,487	63,052,952
2021	1,584,977	2,595,333	7,069,680	8,850,453	2,192,693	6,733,349	15,306,272	7,969,934	11,252,683	63,555,374
2022	1,592,181	2,605,056	7,112,282	8,897,796	2,203,384	6,808,013	15,411,433	8,035,018	11,344,992	64,010,155
2023	1,599,311	2,614,808	7,160,121	8,948,880	2,214,507	6,883,301	15,518,548	8,100,644	11,432,185	64,472,305
2024	1,606,353	2,625,654	7,220,212	9,011,247	2,228,154	6,961,751	15,634,056	8,170,840	11,519,937	64,978,204
2025	1,613,419	2,636,578	7,283,196	9,076,050	2,242,156	7,040,065	15,751,220	8,242,380	11,607,888	65,492,952
2026	1,620,741	2,647,908	7,348,072	9,143,610	2,256,549	7,119,545	15,872,517	8,315,898	11,699,368	66,024,208
2027	1,628,160	2,659,431	7,413,761	9,211,891	2,272,213	7,201,634	15,995,359	8,389,539	11,791,054	66,563,042
2028	1,635,561	2,670,835	7,478,487	9,279,161	2,286,779	7,285,415	16,118,084	8,463,535	11,883,473	67,101,330
2029	1,642,918	2,682,292	7,542,628	9,346,718	2,301,974	7,368,592	16,240,463	8,538,187	11,975,868	67,639,640
2030	1,650,361	2,693,803	7,606,758	9,414,334	2,316,869	7,451,633	16,363,351	8,613,870	12,069,117	68,180,096
2031	1,657,801	2,705,442	7,670,683	9,481,710	2,331,316	7,537,165	16,487,647	8,690,472	12,162,257	68,724,493
2032	1,665,339	2,717,173	7,735,307	9,550,252	2,346,000	7,626,624	16,616,578	8,770,314	12,258,479	69,286,066
2033	1,673,031	2,729,513	7,802,053	9,621,847	2,361,396	7,716,242	16,749,949	8,852,588	12,357,015	69,863,634
2034	1,680,868	2,742,335	7,871,840	9,696,245	2,376,953	7,809,475	16,887,170	8,937,138	12,458,927	70,460,951
2035	1,688,934	2,755,417	7,942,751	9,772,087	2,393,281	7,905,860	17,026,106	9,022,600	12,561,814	71,068,850
2036	1,697,107	2,768,593	8,015,098	9,849,657	2,409,784	8,002,685	17,166,094	9,107,878	12,665,676	71,682,572
2037	1,705,394	2,781,716	8,086,475	9,926,952	2,425,579	8,098,903	17,304,213	9,192,990	12,770,494	72,292,716
2038	1,713,871	2,794,843	8,159,899	10,005,064	2,442,541	8,197,222	17,444,286	9,277,833	12,877,829	72,913,388
2039	1,722,514	2,807,985	8,232,353	10,083,223	2,459,064	8,298,280	17,584,122	9,362,508	12,982,344	73,532,393
2040	1,731,233	2,821,199	8,304,771	10,162,104	2,475,526	8,399,359	17,724,043	9,448,042	13,088,264	74,154,541

*Includes itinerant air carrier, commuter/air taxi, general aviation and military operations at all airports.

Table S-8 Total Airport Operations Summary by Region*

Fiscal Year						Northwest			Western		National Total
	Alaska (AAL)	Central (ACE)	Eastern (AEA)	Great Lakes (AGL)	New England (ANE)	Mountain (ANM)	Southern (ASO)	Southwest (ASW)	Pacific (AWP)		
Historical											
2011	1,846,387	4,673,290	11,269,548	15,821,010	3,728,948	10,533,555	22,409,048	13,397,406	16,392,212	100,071,404	
2012	1,843,881	4,740,615	11,169,965	15,649,076	3,766,936	10,346,539	22,273,778	13,033,449	16,445,328	99,269,567	
2013	1,838,141	4,657,963	10,820,264	15,305,889	3,561,861	10,167,585	22,318,112	13,066,676	16,398,906	98,135,397	
2014	1,841,688	4,557,087	10,687,236	14,939,552	3,475,019	10,066,210	22,163,485	12,961,740	16,685,281	97,377,298	
Forecast											
2015	1,859,488	4,539,088	10,573,504	14,881,298	3,374,419	10,203,071	22,418,477	12,992,442	16,776,140	97,617,927	
2016	1,861,867	4,549,145	10,607,165	14,922,302	3,376,562	10,372,921	22,612,714	13,049,665	16,876,246	98,228,587	
2017	1,869,651	4,561,464	10,694,210	15,001,641	3,390,450	10,478,730	22,750,355	13,140,200	16,981,369	98,868,070	
2018	1,877,424	4,572,762	10,769,145	15,073,522	3,402,551	10,581,551	22,878,351	13,226,715	17,083,639	99,465,660	
2019	1,885,222	4,584,173	10,837,062	15,144,556	3,414,926	10,687,240	23,008,580	13,314,629	17,186,191	100,062,579	
2020	1,893,267	4,596,925	10,907,921	15,222,893	3,428,767	10,800,383	23,151,581	13,410,066	17,298,244	100,710,047	
2021	1,901,252	4,609,491	10,976,893	15,298,741	3,442,029	10,910,902	23,293,409	13,505,352	17,409,720	101,347,789	
2022	1,908,994	4,620,820	11,037,627	15,366,371	3,453,600	11,016,872	23,424,930	13,594,430	17,516,417	101,940,061	
2023	1,916,666	4,632,189	11,103,851	15,437,967	3,465,607	11,124,044	23,558,791	13,684,448	17,618,115	102,541,678	
2024	1,924,254	4,644,661	11,182,591	15,520,971	3,480,139	11,234,927	23,701,423	13,779,462	17,720,489	103,188,917	
2025	1,931,870	4,657,224	11,264,496	15,606,661	3,495,030	11,346,225	23,846,118	13,876,225	17,823,182	103,847,031	
2026	1,939,746	4,670,208	11,348,567	15,695,403	3,510,319	11,459,318	23,995,339	13,975,406	17,929,522	104,523,828	
2027	1,947,722	4,683,395	11,433,737	15,785,170	3,526,881	11,575,670	24,146,528	14,075,153	18,036,190	105,210,446	
2028	1,955,684	4,696,481	11,518,222	15,874,230	3,542,349	11,694,390	24,298,043	14,175,709	18,143,718	105,898,826	
2029	1,963,604	4,709,632	11,602,420	15,963,908	3,558,448	11,813,181	24,449,639	14,277,382	18,251,352	106,589,566	
2030	1,971,613	4,722,851	11,686,620	16,053,966	3,574,255	11,932,556	24,602,169	14,380,583	18,359,966	107,284,579	
2031	1,979,626	4,736,210	11,770,907	16,144,109	3,589,617	12,055,143	24,756,550	14,485,182	18,468,604	107,985,948	
2032	1,987,739	4,749,680	11,856,203	16,235,757	3,605,220	12,182,402	24,916,019	14,593,511	18,580,449	108,706,980	
2033	1,996,011	4,763,769	11,943,945	16,330,795	3,621,539	12,310,587	25,080,402	14,704,789	18,694,743	109,446,580	
2034	2,004,433	4,778,358	12,035,046	16,428,996	3,638,021	12,443,160	25,249,098	14,818,869	18,812,552	110,208,533	
2035	2,013,087	4,793,221	12,127,597	16,528,989	3,655,280	12,579,692	25,420,003	14,934,397	18,931,462	110,983,728	
2036	2,021,851	4,808,193	12,221,912	16,631,070	3,672,718	12,717,499	25,592,474	15,050,274	19,051,488	111,767,479	
2037	2,030,733	4,823,127	12,315,605	16,733,248	3,689,451	12,855,539	25,763,565	15,166,532	19,172,603	112,550,403	
2038	2,039,808	4,838,081	12,411,690	16,836,611	3,707,355	12,996,570	25,937,114	15,283,086	19,296,380	113,346,695	
2039	2,049,053	4,853,069	12,507,171	16,940,427	3,724,825	13,141,228	26,110,970	15,400,045	19,417,480	114,144,268	
2040	2,058,379	4,868,148	12,602,971	17,045,343	3,742,237	13,286,850	26,285,440	15,518,459	19,540,131	114,947,958	

*Includes all itinerant and local operations at all airports.

Table S-9 TRACON Operations Summary by Region

Fiscal Year						Northwest			Western	National Total
	Alaska (AAL)	Central (ACE)	Eastern (AEA)	Great Lakes (AGL)	New England (ANE)	Mountain (ANM)	Southern (ASO)	Southwest (ASW)	Pacific (AWP)	
Historical										
2011	372,753	1,313,121	5,935,900	5,461,079	1,467,058	2,932,576	9,476,742	5,316,833	6,019,093	38,295,155
2012	367,648	1,318,638	5,918,379	5,386,757	1,397,435	2,840,736	9,277,018	5,214,290	6,057,072	37,777,973
2013	358,581	1,239,629	5,676,943	5,215,434	1,363,177	2,775,624	9,179,526	5,160,831	6,014,158	36,983,903
2014	359,662	1,223,564	5,629,251	5,072,721	1,356,804	2,834,102	9,005,002	5,132,931	6,208,864	36,822,901
Forecast										
2015	370,069	1,220,302	5,657,365	5,022,396	1,341,910	2,860,833	9,230,649	5,150,627	6,338,774	37,192,925
2016	372,427	1,220,771	5,683,363	5,038,971	1,365,890	2,924,993	9,341,713	5,119,669	6,387,070	37,454,867
2017	375,846	1,231,138	5,748,909	5,091,283	1,378,797	2,967,806	9,447,796	5,177,837	6,473,419	37,892,831
2018	379,209	1,239,667	5,798,396	5,132,203	1,388,687	3,005,777	9,538,918	5,230,140	6,554,484	38,267,481
2019	382,480	1,247,992	5,838,486	5,170,669	1,398,333	3,045,079	9,630,207	5,282,837	6,635,106	38,631,189
2020	385,971	1,257,702	5,881,552	5,216,614	1,409,491	3,090,487	9,734,601	5,342,814	6,725,632	39,044,864
2021	389,386	1,266,702	5,921,438	5,257,587	1,419,517	3,133,897	9,834,713	5,401,357	6,814,159	39,438,756
2022	392,588	1,273,573	5,948,207	5,285,912	1,426,624	3,171,026	9,918,341	5,451,677	6,895,251	39,763,199
2023	395,737	1,281,472	5,984,911	5,322,020	1,435,706	3,208,910	10,009,150	5,503,241	6,973,495	40,114,642
2024	398,764	1,292,275	6,042,555	5,377,187	1,449,845	3,250,494	10,118,257	5,561,074	7,056,285	40,546,736
2025	401,805	1,303,571	6,105,023	5,436,490	1,464,941	3,291,602	10,231,052	5,620,271	7,140,004	40,994,759
2026	404,978	1,315,314	6,169,594	5,498,554	1,480,562	3,333,242	10,348,054	5,681,291	7,227,389	41,458,978
2027	408,202	1,327,270	6,235,064	5,561,225	1,497,152	3,376,670	10,466,451	5,742,129	7,315,156	41,929,319
2028	411,385	1,339,090	6,299,395	5,622,613	1,512,958	3,420,965	10,584,637	5,802,907	7,403,194	42,397,144
2029	414,515	1,350,933	6,362,963	5,683,908	1,529,058	3,463,800	10,701,654	5,863,919	7,491,099	42,861,849
2030	417,640	1,362,817	6,426,638	5,745,003	1,545,036	3,505,699	10,819,136	5,925,569	7,579,812	43,327,350
2031	420,805	1,374,821	6,489,996	5,805,665	1,560,620	3,549,175	10,937,718	5,987,751	7,668,326	43,794,877
2032	424,001	1,386,945	6,554,258	5,867,735	1,576,458	3,595,686	11,061,230	6,052,940	7,760,106	44,279,359
2033	427,317	1,399,713	6,620,856	5,932,912	1,593,140	3,641,521	11,189,515	6,120,322	7,854,343	44,779,639
2034	430,684	1,413,008	6,690,785	6,000,975	1,610,166	3,690,030	11,321,919	6,189,781	7,952,197	45,299,545
2035	434,128	1,426,573	6,761,853	6,070,455	1,627,931	3,740,702	11,456,249	6,259,826	8,050,955	45,828,672
2036	437,694	1,440,221	6,834,288	6,141,368	1,645,862	3,790,871	11,590,946	6,329,234	8,150,602	46,361,086
2037	441,320	1,453,773	6,905,519	6,211,462	1,663,235	3,839,376	11,723,283	6,397,957	8,250,743	46,886,668
2038	445,106	1,467,329	6,978,769	6,282,159	1,681,518	3,889,051	11,857,418	6,466,024	8,353,066	47,420,440
2039	449,001	1,480,871	7,050,817	6,352,505	1,699,431	3,940,284	11,990,474	6,533,361	8,452,648	47,949,392
2040	452,844	1,494,460	7,122,659	6,423,214	1,717,282	3,990,530	12,123,325	6,601,040	8,553,577	48,478,931

Table S-10 Enplanements Summary by Region*

Fiscal Year						Northwest			Western	National Total
	Alaska (AAL)	Central (ACE)	Eastern (AEA)	Great Lakes (AGL)	New England (ANE)	Mountain (ANM)	Southern (ASO)	Southwest (ASW)	Pacific (AWP)	
Historical										
2011	4,333,115	16,247,278	118,328,419	98,579,675	22,367,970	67,510,844	169,095,789	81,703,579	144,759,533	722,926,202
2012	4,335,234	16,347,060	119,867,749	98,413,657	22,242,987	67,863,588	170,789,344	82,374,948	148,818,946	731,053,513
2013	4,389,781	16,332,429	120,114,631	98,066,458	22,393,108	68,258,672	170,889,088	83,571,431	150,320,923	734,336,521
2014	4,461,781	16,562,601	121,625,306	100,604,426	23,181,491	70,663,863	173,796,012	87,294,714	154,869,858	753,060,052
Forecast										
2015	4,752,953	16,662,364	125,432,061	103,618,128	23,799,818	73,318,859	180,890,448	91,052,679	161,115,774	780,643,084
2016	4,995,893	17,011,270	127,192,580	105,783,629	25,036,751	77,542,619	188,810,083	90,952,907	166,291,053	803,616,785
2017	5,077,240	17,372,514	130,330,845	107,928,555	25,632,487	79,499,433	193,212,090	93,242,082	170,292,800	822,588,046
2018	5,154,431	17,707,136	133,487,676	109,949,285	26,190,709	81,335,046	197,283,118	95,422,749	174,147,971	840,678,121
2019	5,231,694	18,052,743	136,220,268	112,041,145	26,769,201	83,223,375	201,488,921	97,660,649	178,033,390	858,721,386
2020	5,315,669	18,456,477	139,050,748	114,454,191	27,415,109	85,367,256	206,292,179	100,197,802	182,388,466	878,937,897
2021	5,396,197	18,859,659	141,898,552	116,874,149	28,062,244	87,499,153	211,091,156	102,708,669	186,710,440	899,100,219
2022	5,469,701	19,227,372	144,582,082	119,130,452	28,672,501	89,461,345	215,537,401	105,021,468	190,747,856	917,850,178
2023	5,538,266	19,567,878	147,139,077	121,211,324	29,245,737	91,275,011	219,774,682	107,201,954	194,498,729	935,452,658
2024	5,602,994	19,901,981	149,641,428	123,205,116	29,813,242	93,001,294	223,933,829	109,343,847	198,153,877	952,597,608
2025	5,666,499	20,227,925	152,134,804	125,165,429	30,373,967	94,712,308	228,026,821	111,458,993	201,779,370	969,546,116
2026	5,735,516	20,570,604	154,716,970	127,231,880	30,961,282	96,501,209	232,339,100	113,646,137	205,589,898	987,292,596
2027	5,805,005	20,920,790	157,332,382	129,323,052	31,565,663	98,322,453	236,743,675	115,825,207	209,420,573	1,005,258,800
2028	5,873,610	21,265,749	159,909,996	131,372,784	32,162,161	100,125,287	241,086,691	118,001,690	213,265,182	1,023,063,150
2029	5,939,925	21,612,701	162,523,906	133,416,679	32,759,076	101,913,824	245,404,713	120,185,234	217,102,480	1,040,858,538
2030	6,006,369	21,960,890	165,148,021	135,454,947	33,356,687	103,713,885	249,720,975	122,398,161	220,973,553	1,058,733,488
2031	6,072,595	22,311,292	167,781,915	137,473,013	33,946,813	105,524,119	254,094,991	124,624,185	224,823,681	1,076,652,604
2032	6,139,313	22,664,709	170,441,392	139,541,197	34,538,611	107,411,823	258,659,909	126,971,558	228,807,092	1,095,175,604
2033	6,210,269	23,041,712	173,176,016	141,719,114	35,164,012	109,384,639	263,399,747	129,396,518	232,896,413	1,114,388,440
2034	6,283,560	23,436,730	176,004,874	143,995,369	35,797,902	111,421,771	268,272,524	131,902,510	237,162,720	1,134,277,960
2035	6,360,052	23,839,490	178,866,592	146,310,438	36,453,805	113,488,019	273,173,456	134,418,374	241,453,991	1,154,364,217
2036	6,437,896	24,241,511	181,763,561	148,672,608	37,103,672	115,581,409	278,106,575	136,904,240	245,789,823	1,174,601,295
2037	6,516,700	24,639,543	184,621,567	151,003,556	37,749,596	117,661,955	282,934,115	139,350,885	250,163,874	1,194,641,791
2038	6,597,824	25,037,313	187,541,339	153,355,872	38,410,580	119,730,210	287,827,260	141,771,228	254,513,929	1,214,785,555
2039	6,680,409	25,433,532	190,430,293	155,687,368	39,064,652	121,797,378	292,694,387	144,156,721	258,854,205	1,234,798,945
2040	6,763,189	25,832,337	193,322,395	158,040,553	39,718,595	123,887,607	297,567,192	146,565,626	263,256,187	1,254,953,681

*Includes both tower and non-tower airports.

Table S-11 Based Aircraft Summary by Region*

Fiscal Year						Northwest			Western		National Total
	Alaska (AAL)	Central (ACE)	Eastern (AEA)	Great Lakes (AGL)	New England (ANE)	Mountain (ANM)	Southern (ASO)	Southwest (ASW)	Pacific (AWP)		
Historical											
2011	4,286	8,942	14,983	26,676	6,099	21,991	29,277	20,092	28,028	160,374	
2012	4,567	9,361	15,378	26,593	5,803	21,998	30,202	21,312	28,119	163,333	
2013	4,698	9,714	15,698	27,262	5,985	22,507	31,163	21,537	28,389	166,953	
2014	4,728	9,927	15,841	27,572	6,291	22,814	32,190	22,530	28,482	170,375	
Forecast											
2015	4,756	9,947	15,940	27,786	6,347	23,051	32,430	22,637	28,770	171,664	
2016	4,786	10,012	16,081	27,982	6,406	23,303	32,720	22,870	29,058	173,218	
2017	4,813	10,057	16,197	28,159	6,470	23,523	32,984	23,078	29,332	174,613	
2018	4,843	10,113	16,337	28,360	6,528	23,775	33,264	23,279	29,608	176,107	
2019	4,873	10,160	16,460	28,548	6,591	23,994	33,527	23,484	29,892	177,529	
2020	4,900	10,200	16,576	28,747	6,655	24,223	33,797	23,681	30,168	178,947	
2021	4,931	10,253	16,714	28,944	6,721	24,485	34,101	23,909	30,454	180,512	
2022	4,962	10,309	16,847	29,142	6,780	24,728	34,396	24,125	30,753	182,042	
2023	4,993	10,379	16,986	29,348	6,853	24,986	34,710	24,354	31,078	183,687	
2024	5,027	10,433	17,108	29,537	6,919	25,219	35,011	24,569	31,378	185,201	
2025	5,057	10,489	17,223	29,733	6,987	25,456	35,299	24,790	31,680	186,714	
2026	5,088	10,542	17,341	29,921	7,056	25,687	35,589	25,012	31,985	188,221	
2027	5,120	10,597	17,465	30,116	7,125	25,924	35,884	25,237	32,293	189,761	
2028	5,152	10,653	17,589	30,307	7,194	26,162	36,180	25,461	32,606	191,304	
2029	5,184	10,710	17,708	30,505	7,265	26,398	36,482	25,692	32,924	192,868	
2030	5,217	10,766	17,835	30,702	7,336	26,639	36,797	25,939	33,245	194,476	
2031	5,250	10,822	17,964	30,900	7,406	26,883	37,107	26,186	33,567	196,085	
2032	5,284	10,879	18,090	31,096	7,477	27,126	37,421	26,436	33,891	197,700	
2033	5,318	10,938	18,217	31,297	7,549	27,373	37,744	26,688	34,220	199,344	
2034	5,352	10,996	18,343	31,502	7,622	27,628	38,068	26,949	34,555	201,015	
2035	5,388	11,056	18,474	31,704	7,695	27,891	38,404	27,222	34,900	202,734	
2036	5,424	11,114	18,603	31,906	7,769	28,154	38,745	27,499	35,250	204,464	
2037	5,461	11,176	18,740	32,114	7,845	28,424	39,102	27,787	35,603	206,252	
2038	5,498	11,239	18,876	32,331	7,923	28,696	39,462	28,078	35,963	208,066	
2039	5,535	11,305	19,011	32,545	8,007	28,973	39,833	28,378	36,327	209,914	
2040	5,572	11,371	19,151	32,760	8,094	29,262	40,216	28,688	36,696	211,810	

*Includes both tower and non-tower airports.

Appendix A: Description of Activity Measures

Air Carrier Enplanements

These data summarize domestic enplaned passengers (originations and connections) of U.S. commercial air carriers and international enplanements for both U.S. and foreign flag carriers submitted to the U.S. Department of Transportation (DOT), Bureau of Transportation Statistics (BTS) on T-100 reports. Estimates include both scheduled and non-scheduled enplaned passengers.

Regional Enplanements

Starting in FY 2003, FAA includes in the regional category enplanements for those airlines whose primary function is to provide passenger feed to mainline carriers, regardless of aircraft size. As of October 2002, all scheduled and non-scheduled operations using aircraft with 10 or more seats to transport regional passengers must report on T-100.

Historic enplanement data includes originating passengers on scheduled commuter or regional carriers as reported on DOT Form 41 and 298-C; where possible, adjustments were made to include connecting passengers. Historically, Form 298-C included carriers operating at least five scheduled round trips per week whose entire fleet consists of aircraft having 60 seats or less.

Aircraft Operations

FAA air traffic controllers count landings and takeoffs at FAA towered airports. Controllers employed by an FAA contractor count operations at FAA contract towers. At non-FAA facilities, operations counts represent an estimate.

Air carrier operations represent either takeoffs or landings of commercial aircraft with seating capacity of more than 60 seats.

Commuter/air taxi operations are one category. Commuter operations include takeoffs and landings by aircraft with 60 or fewer seats that transport regional passengers on scheduled commercial flights. Air taxi operations include takeoffs and landings by aircraft with 60 or fewer seats conducted on non-scheduled or for-hire flights.

Itinerant general aviation and local civil operations represent all civil aviation aircraft takeoffs and landings not classified as commercial. Military operations represent take-offs and landings by military aircraft. Operations are either itinerant or local flights.

Local Operations

Aircraft operating in the traffic pattern or within sight of the tower, or aircraft known to be departing or arriving from flight in local practice areas, or aircraft executing practice instrument approaches at the airport.

Itinerant Operations

FAA reports all aircraft operations other than local operations as itinerant. Essentially, these data represent takeoffs and landings of aircraft going from one airport to another.

Tracon Operations

These data include arrivals, departures, and overflights conducted by an FAA radar approach control facility for aircraft under Instrument Flight Rule (IFR) or Visual Flight Rule (VFR) plans.

Overflights

These data include operations of aircraft in transit through the approach control facility airspace.

Appendix B: List of FAA Towers by Hub Size and FAA Contract Towers

Table B-1 List of Large Hub Towers

Location Identifier	Region	Airport Name	City, State
ATL	ASO	HARTSFIELD - JACKSON ATLANTA INTL	ATLANTA, GA
BOS	ANE	GENERAL EDWARD LAWRENCE LOGAN INTL	BOSTON, MA
BWI	AEA	BALTIMORE/WASHINGTON INTL THURGOOD MARSHALL	BALTIMORE, MD
CLT	ASO	CHARLOTTE/DOUGLAS INTL	CHARLOTTE, NC
DCA	AEA	RONALD REAGAN WASHINGTON NATIONAL	WASHINGTON, DC
DEN	ANM	DENVER INTL	DENVER, CO
DFW	ASW	DALLAS/FORT WORTH INTL	DALLAS-FORT WORTH, TX
DTW	AGL	DETROIT METROPOLITAN WAYNE COUNTY	DETROIT, MI
EWR	AEA	NEWARK LIBERTY INTL	NEWARK, NJ
FLL	ASO	FORT LAUDERDALE/HOLLYWOOD INTL	FORT LAUDERDALE, FL
HNL	AWP	HONOLULU INTL	HONOLULU, HI
IAD	AEA	WASHINGTON DULLES INTL	WASHINGTON, DC
IAH	ASW	GEORGE BUSH INTERCONTINENTAL/HOUSTON	HOUSTON, TX
JFK	AEA	JOHN F KENNEDY INTL	NEW YORK, NY
LAS	AWP	MC CARRAN INTL	LAS VEGAS, NV
LAX	AWP	LOS ANGELES INTL	LOS ANGELES, CA
LGA	AEA	LA GUARDIA	NEW YORK, NY
MCO	ASO	ORLANDO INTL	ORLANDO, FL
MDW	AGL	CHICAGO MIDWAY INTL	CHICAGO, IL
MIA	ASO	MIAMI INTL	MIAMI, FL
MSP	AGL	MINNEAPOLIS-ST PAUL INTL/WOLD-CHAMBERLAIN	MINNEAPOLIS, MN
ORD	AGL	CHICAGO O'HARE INTL	CHICAGO, IL
PDX	ANM	PORTLAND INTL	PORTLAND, OR
PHL	AEA	PHILADELPHIA INTL	PHILADELPHIA, PA
PHX	AWP	PHOENIX SKY HARBOR INTL	PHOENIX, AZ
SAN	AWP	SAN DIEGO INTL	SAN DIEGO, CA
SEA	ANM	SEATTLE-TACOMA INTL	SEATTLE, WA
SFO	AWP	SAN FRANCISCO INTL	SAN FRANCISCO, CA
SLC	ANM	SALT LAKE CITY INTL	SALT LAKE CITY, UT
TPA	ASO	TAMPA INTL	TAMPA, FL

Listed 30 Airports.

Table B-2 List of Medium Hub Towers

Location Identifier	Region	Airport Name	City, State
ABQ	ASW	ALBUQUERQUE INTL SUNPORT	ALBUQUERQUE, NM
ANC	AAL	TED STEVENS ANCHORAGE INTL	ANCHORAGE, AK
AUS	ASW	AUSTIN-BERGSTROM INTL	AUSTIN, TX
BDL	ANE	BRADLEY INTL	WINDSOR LOCKS, CT
BNA	ASO	NASHVILLE INTL	NASHVILLE, TN
BUF	AEA	BUFFALO NIAGARA INTL	BUFFALO, NY
BUR	AWP	BOB HOPE	BURBANK, CA
CLE	AGL	CLEVELAND-HOPKINS INTL	CLEVELAND, OH
CMH	AGL	PORT COLUMBUS INTL	COLUMBUS, OH
CVG	ASO	CINCINNATI/NORTHERN KENTUCKY INTL	COVINGTON , KY
DAL	ASW	DALLAS LOVE FIELD	DALLAS, TX
HOU	ASW	WILLIAM P HOBBY	HOUSTON, TX
IND	AGL	INDIANAPOLIS INTL	INDIANAPOLIS, IN
JAX	ASO	JACKSONVILLE INTL	JACKSONVILLE, FL
MCI	ACE	KANSAS CITY INTL	KANSAS CITY, MO
MKE	AGL	GENERAL MITCHELL INTL	MILWAUKEE, WI
MSY	ASW	LOUIS ARMSTRONG NEW ORLEANS INTL	NEW ORLEANS, LA
OAK	AWP	METROPOLITAN OAKLAND INTL	OAKLAND, CA
OGG	AWP	KAHULUI	KAHULUI, HI
OMA	ACE	EPPLEY AIRFIELD	OMAHA, NE
ONT	AWP	ONTARIO INTL	ONTARIO, CA
PBI	ASO	PALM BEACH INTL	WEST PALM BEACH, FL
PIT	AEA	PITTSBURGH INTL	PITTSBURGH, PA
RDU	ASO	RALEIGH-DURHAM INTL	RALEIGH/DURHAM, NC
RSW	ASO	SOUTHWEST FLORIDA INTL	FORT MYERS, FL
SAT	ASW	SAN ANTONIO INTL	SAN ANTONIO, TX
SJC	AWP	NORMAN Y. MINETA SAN JOSE INTL	SAN JOSE, CA
SJU	ASO	LUIS MUNOZ MARIN INTL	SAN JUAN, PR
SMF	AWP	SACRAMENTO INTL	SACRAMENTO, CA
SNA	AWP	JOHN WAYNE AIRPORT-ORANGE COUNTY	SANTA ANA, CA
STL	ACE	LAMBERT-ST LOUIS INTL	ST LOUIS, MO

Listed 31 Airports.

Table B-3 List of Small Hub Towers

Location Identifier	Region	Airport Name	City, State
ACY	AEA	ATLANTIC CITY INTL	ATLANTIC CITY, NJ
ALB	AEA	ALBANY INTL	ALBANY, NY
AVL	ASO	ASHEVILLE RGNL	ASHEVILLE, NC
BHM	ASO	BIRMINGHAM-SHUTTLESWORTH INTL	BIRMINGHAM, AL
BIL	ANM	BILLINGS LOGAN INTL	BILLINGS, MT
BLI	ANM	BELLINGHAM INTL	BELLINGHAM, WA
BOI	ANM	BOISE AIR TERMINAL/GOWEN FLD	BOISE, ID
BTR	ASW	BATON ROUGE METROPOLITAN, RYAN FIELD	BATON ROUGE, LA
BTV	ANE	BURLINGTON INTL	BURLINGTON, VT
BZN	ANM	BOZEMAN YELLOWSTONE INTL	BOZEMAN, MT
CAE	ASO	COLUMBIA METROPOLITAN	COLUMBIA, SC
CAK	AGL	AKRON-CANTON RGNL	AKRON, OH
CHS	ASO	CHARLESTON AFB/INTL	CHARLESTON, SC
CID	ACE	THE EASTERN IOWA	CEDAR RAPIDS, IA
COS	ANM	CITY OF COLORADO SPRINGS MUNI	COLORADO SPRINGS, CO
DAY	AGL	JAMES M COX DAYTON INTL	DAYTON, OH
DSM	ACE	DES MOINES INTL	DES MOINES, IA
ECP	ASO	NORTHWEST FLORIDA BEACHES INTL	PANAMA CITY, FL
ELP	ASW	EL PASO INTL	EL PASO, TX
EUG	ANM	MAHLON SWEET FIELD	EUGENE, OR
EYW	ASO	KEY WEST INTL	KEY WEST, FL
FAI	AAL	FAIRBANKS INTL	FAIRBANKS, AK
FAR	AGL	HECTOR INTL	FARGO, ND
FAT	AWP	FRESNO YOSEMITE INTL	FRESNO, CA
FNT	AGL	BISHOP INTL	FLINT, MI
FSD	AGL	JOE FOSS FIELD	SIOUX FALLS, SD
GEG	ANM	SPOKANE INTL	SPOKANE, WA
GRR	AGL	GERALD R. FORD INTL	GRAND RAPIDS, MI
GSN	AWP	FRANCISCO C. ADA/SAIPAN INTL	SAIPAN ISLAND, MP
GSO	ASO	PIEDMONT TRIAD INTL	GREENSBORO, NC
GSP	ASO	GREENVILLE SPARTANBURG INTL	GREER, SC
GUM	AWP	GUAM INTL	GUAM, GU
HPN	AEA	WESTCHESTER COUNTY	WHITE PLAINS, NY
HSV	ASO	HUNTSVILLE INTL-CARL T JONES FIELD	HUNTSVILLE, AL
ICT	ACE	WICHITA DWIGHT D. EISENHOWER NATIONAL	WICHITA, KS
ILM	ASO	WILMINGTON INTL	WILMINGTON, NC
ISP	AEA	LONG ISLAND MAC ARTHUR	NEW YORK, NY
ITO	AWP	HILO INTL	HILO, HI
IWA	AWP	PHOENIX-MESA GATEWAY	PHOENIX, AZ
JAN	ASO	JACKSON-MEDGAR WILEY EVERS INTL	JACKSON, MS
KOA	AWP	KONA INTL AT KEAHOLE	KAILUA/KONA, HI
LBB	ASW	LUBBOCK PRESTON SMITH INTL	LUBBOCK, TX
LEX	ASO	BLUE GRASS	LEXINGTON, KY
LGB	AWP	LONG BEACH /DAUGHERTY FIELD/	LONG BEACH, CA
LIH	AWP	LIHUE	LIHUE, HI
LIT	ASW	BILL AND HILLARY CLINTON NATIONAL/ADAMS FIELD	LITTLE ROCK, AR
MAF	ASW	MIDLAND INTL	MIDLAND, TX
MDT	AEA	HARRISBURG INTL	HARRISBURG, PA
MEM	ASO	MEMPHIS INTL	MEMPHIS, TN
MHT	ANE	MANCHESTER	MANCHESTER, NH

Table B-3 List of Small Hub Towers

Location Identifier	Region	Airport Name	City, State
MLI	AGL	QUAD CITY INTL	MOLINE, IL
MSN	AGL	DANE COUNTY RGNL-TRUAX FIELD	MADISON, WI
MYR	ASO	MYRTLE BEACH INTL	MYRTLE BEACH, SC
OKC	ASW	WILL ROGERS WORLD	OKLAHOMA CITY, OK
ORF	AEA	NORFOLK INTL	NORFOLK, VA
PIE	ASO	ST PETE-CLEARWATER INTL	ST PETERSBURG-CLEARWATER, FL
PNS	ASO	PENSACOLA INTL	PENSACOLA, FL
PSP	AWP	PALM SPRINGS INTL	PALM SPRINGS, CA
PVD	ANE	THEODORE FRANCIS GREEN STATE	PROVIDENCE, RI
PWM	ANE	PORTLAND INTL JETPORT	PORTLAND, ME
RIC	AEA	RICHMOND INTL	RICHMOND, VA
RNO	AWP	RENO/TAHOE INTL	RENO, NV
ROC	AEA	GREATER ROCHESTER INTL	ROCHESTER, NY
SAV	ASO	SAVANNAH/HILTON HEAD INTL	SAVANNAH, GA
SDF	ASO	LOUISVILLE INTL-STANDIFORD FIELD	LOUISVILLE, KY
SFB	ASO	ORLANDO SANFORD INTL	ORLANDO, FL
SGF	ACE	SPRINGFIELD-BRANSON NATIONAL	SPRINGFIELD, MO
SRQ	ASO	SARASOTA/BRADENTON INTL	SARASOTA/BRADENTON , FL
STT	ASO	CYRIL E KING	CHARLOTTE AMALIE, VI
SYR	AEA	SYRACUSE HANCOCK INTL	SYRACUSE, NY
TUL	ASW	TULSA INTL	TULSA, OK
TUS	AWP	TUCSON INTL	TUCSON, AZ
TYS	ASO	MC GHEE TYSON	KNOXVILLE, TN
XNA	ASW	NORTHWEST ARKANSAS RGNL	FAYETTEVILLE/SPRINGDALE/, AR

Listed 74 Airports.

Table B-4 List of Non-Hub Towers

Location Identifier	Region	Airport Name	City, State
ABE	AEA	LEHIGH VALLEY INTL	ALLENTOWN, PA
ABI	ASW	ABILENE RGNL	ABILENE, TX
ABY	ASO	SOUTHWEST GEORGIA RGNL	ALBANY, GA
ACK	ANE	NANTUCKET MEMORIAL	NANTUCKET, MA
ACT	ASW	WACO RGNL	WACO, TX
ADM	ASW	ARDMORE MUNI	ARDMORE, OK
ADQ	AAL	KODIAK	KODIAK, AK
ADS	ASW	ADDISON	DALLAS, TX
ADW	AEA	JOINT BASE ANDREWS	CAMP SPRINGS, MD
AEG	ASW	DOUBLE EAGLE II	ALBUQUERQUE, NM
AEX	ASW	ALEXANDRIA INTL	ALEXANDRIA, LA
AFW	ASW	FORT WORTH ALLIANCE	FORT WORTH, TX
AGC	AEA	ALLEGHENY COUNTY	PITTSBURGH, PA
AGS	ASO	AUGUSTA RGNL AT BUSH FIELD	AUGUSTA, GA
AHN	ASO	ATHENS/BEN EPPS	ATHENS, GA
AKN	AAL	KING SALMON	KING SALMON, AK
ALN	AGL	ST LOUIS RGNL	ALTON/ST LOUIS, IL
ALO	ACE	WATERLOO RGNL	WATERLOO, IA
ALW	ANM	WALLA WALLA RGNL	WALLA WALLA, WA
AMA	ASW	RICK HUSBAND AMARILLO INTL	AMARILLO, TX
ANE	AGL	ANOKA COUNTY-BLAINE ARPT(JANES FIELD)	MINNEAPOLIS, MN
APA	ANM	CENTENNIAL	DENVER, CO
APC	AWP	NAPA COUNTY	NAPA, CA
APF	ASO	NAPLES MUNI	NAPLES, FL
ARA	ASW	ACADIANA RGNL	NEW IBERIA, LA
ARB	AGL	ANN ARBOR MUNI	ANN ARBOR, MI
ARR	AGL	AURORA MUNI	CHICAGO/AURORA, IL
ASE	ANM	ASPEN-PITKIN CO/SARDY FIELD	ASPEN, CO
ASG	ASW	SPRINGDALE MUNI	SPRINGDALE, AR
ASH	ANE	BOIRE FIELD	NASHUA, NH
ATW	AGL	OUTAGAMIE COUNTY RGNL	APPLETON, WI
AVP	AEA	WILKES-BARRE/SCRANTON INTL	WILKES-BARRE/SCRANTON, PA
AZO	AGL	KALAMAZOO/BATTLE CREEK INTL	KALAMAZOO, MI
BAF	ANE	WESTFIELD-BARNES RGNL	WESTFIELD/SPRINGFIELD, MA
BAK	AGL	COLUMBUS MUNI	COLUMBUS, IN
BAZ	ASW	NEW BRAUNFELS RGNL	NEW BRAUNFELS, TX
BBG	ACE	BRANSON	BRANSON, MO
BCT	ASO	BOCA RATON	BOCA RATON, FL
BDR	ANE	IGOR I SIKORSKY MEMORIAL	BRIDGEPORT, CT
BED	ANE	LAURENCE G HANSCOM FLD	BEDFORD, MA
BET	AAL	BETHEL	BETHEL, AK
BFI	ANM	BOEING FIELD/KING COUNTY INTL	SEATTLE, WA
BFL	AWP	MEADOWS FIELD	BAKERSFIELD, CA
BFM	ASO	MOBILE DOWNTOWN	MOBILE, AL
BGM	AEA	GREATER BINGHAMTON/EDWIN A LINK FIELD	BINGHAMTON, NY
BGR	ANE	BANGOR INTL	BANGOR, ME
BIS	AGL	BISMARCK MUNI	BISMARCK, ND
BJC	ANM	ROCKY MOUNTAIN METROPOLITAN	DENVER, CO
BKL	AGL	BURKE LAKEFRONT	CLEVELAND, OH
BKV	ASO	BROOKSVILLE-TAMPA BAY RGNL	BROOKSVILLE, FL
BMG	AGL	MONROE COUNTY	BLOOMINGTON, IN
BMI	AGL	CENTRAL IL RGNL ARPT AT BLOOMINGTON-NORMAL	BLOOMINGTON/NORMAL, IL
BPT	ASW	JACK BROOKS RGNL	BEAUMONT/PORT ARTHUR, TX
BQN	ASO	RAFAEL HERNANDEZ	AGUADILLA, PR
BRO	ASW	BROWNSVILLE/SOUTH PADRE ISLAND INTL	BROWNSVILLE, TX

Table B-4 List of Non-Hub Towers

Location Identifier	Region	Airport Name	City, State
BTL	AGL	W K KELLOGG	BATTLE CREEK, MI
BVY	ANE	BEVERLY MUNI	BEVERLY, MA
CCR	AWP	BUCHANAN FIELD	CONCORD, CA
CDW	AEA	ESSEX COUNTY	CALDWELL, NJ
CGF	AGL	CUYAHOGA COUNTY	CLEVELAND, OH
CHA	ASO	LOVELL FIELD	CHATTANOOGA, TN
CHD	AWP	CHANDLER MUNI	CHANDLER, AZ
CHO	AEA	CHARLOTTESVILLE-ALBEMARLE	CHARLOTTESVILLE, VA
CIC	AWP	CHICO MUNI	CHICO, CA
CKB	AEA	NORTH CENTRAL WEST VIRGINIA	CLARKSBURG, WV
CLL	ASW	EASTERWOOD FIELD	COLLEGE STATION, TX
CMA	AWP	CAMARILLO	CAMARILLO, CA
CMI	AGL	UNIVERSITY OF ILLINOIS-WILLARD	CHAMPAIGN/URBANA , IL
CNO	AWP	CHINO	CHINO, CA
CNW	ASW	TSTC WACO	WACO, TX
COU	ACE	COLUMBIA RGNL	COLUMBIA, MO
CPR	ANM	CASPER/NATRONA COUNTY INTL	CASPER, WY
CPS	AGL	ST LOUIS DOWNTOWN	CAHOKIA/ST LOUIS, IL
CRE	ASO	GRAND STRAND	NORTH MYRTLE BEACH, SC
CRG	ASO	JACKSONVILLE EXECUTIVE AT CRAIG	JACKSONVILLE, FL
CRP	ASW	CORPUS CHRISTI INTL	CORPUS CHRISTI, TX
CRQ	AWP	MC CLELLAN-PALOMAR	CARLSBAD, CA
CRW	AEA	YEAGER	CHARLESTON, WV
CSG	ASO	COLUMBUS	COLUMBUS, GA
CWA	AGL	CENTRAL WISCONSIN	MOSINEE, WI
CWF	ASW	CHENNAULT INTL	LAKE CHARLES, LA
CXO	ASW	LONE STAR EXECUTIVE	HOUSTON , TX
CXY	AEA	CAPITAL CITY	HARRISBURG, PA
CYS	ANM	CHEYENNE RGNL/JERRY OLSON FIELD	CHEYENNE, WY
DAB	ASO	DAYTONA BEACH INTL	DAYTONA BEACH, FL
DBQ	ACE	DUBUQUE RGNL	DUBUQUE, IA
DEC	AGL	DECATUR	DECATUR, IL
DET	AGL	COLEMAN A. YOUNG MUNI	DETROIT, MI
DHN	ASO	DOTHAN RGNL	DOTHAN, AL
DLH	AGL	DULUTH INTL	DULUTH, MN
DPA	AGL	DUPAGE	CHICAGO/WEST CHICAGO , IL
DTN	ASW	SHREVEPORT DOWNTOWN	SHREVEPORT, LA
DTO	ASW	DENTON MUNI	DENTON, TX
DVT	AWP	PHOENIX DEER VALLEY	PHOENIX, AZ
DWH	ASW	DAVID WAYNE HOOKS MEMORIAL	HOUSTON, TX
DXR	ANE	DANBURY MUNI	DANBURY, CT
EAU	AGL	CHIPPEWA VALLEY RGNL	EAU CLAIRE, WI
EGE	ANM	EAGLE COUNTY RGNL	EAGLE, CO
ELM	AEA	ELMIRA/CORNING RGNL	ELMIRA/CORNING, NY
EMT	AWP	EL MONTE	EL MONTE, CA
ENA	AAL	KENAI MUNI	KENAI, AK
ENW	AGL	KENOSHA RGNL	KENOSHA, WI
ERI	AEA	ERIE INTL/TOM RIDGE FIELD	ERIE, PA
ESN	AEA	EASTON/NEWNAM FIELD	EASTON, MD
EVB	ASO	NEW SMYRNA BEACH MUNI	NEW SMYRNA BEACH, FL
EVV	AGL	EVANSVILLE RGNL	EVANSVILLE, IN
EWB	ANE	NEW BEDFORD RGNL	NEW BEDFORD, MA
EWN	ASO	COASTAL CAROLINA REGIONAL	NEW BERN, NC
FAY	ASO	FAYETTEVILLE RGNL/GRANNIS FIELD	FAYETTEVILLE, NC
FCM	AGL	FLYING CLOUD	MINNEAPOLIS, MN

Table B-4 List of Non-Hub Towers

Location Identifier	Region	Airport Name	City, State
FDK	AEA	FREDERICK MUNI	FREDERICK, MD
FFZ	AWP	FALCON FLD	MESA, AZ
FIN	ASO	FLAGLER COUNTY	PALM COAST, FL
FLG	AWP	FLAGSTAFF PULLIAM	FLAGSTAFF, AZ
FLO	ASO	FLORENCE RGNL	FLORENCE, SC
FMN	ASW	FOUR CORNERS RGNL	FARMINGTON, NM
FMY	ASO	PAGE FIELD	FORT MYERS, FL
FOE	ACE	FORBES FIELD	TOPEKA, KS
FOK	AEA	FRANCIS S GABRESKI	WESTHAMPTON BEACH, NY
FPR	ASO	ST LUCIE COUNTY INTL	FORT PIERCE, FL
FRG	AEA	REPUBLIC	FARMINGDALE, NY
FSM	ASW	FORT SMITH RGNL	FORT SMITH, AR
FTG	ANM	FRONT RANGE	DENVER, CO
FTW	ASW	FORT WORTH MEACHAM INTL	FORT WORTH, TX
FTY	ASO	FULTON COUNTY AIRPORT-BROWN FIELD	ATLANTA, GA
FUL	AWP	FULLERTON MUNI	FULLERTON, CA
FWA	AGL	FORT WAYNE INTL	FORT WAYNE, IN
FWS	ASW	FORT WORTH SPINKS	FORT WORTH, TX
FXE	ASO	FORT LAUDERDALE EXECUTIVE	FORT LAUDERDALE, FL
FYV	ASW	DRAKE FIELD	FAYETTEVILLE, AR
GCK	ACE	GARDEN CITY RGNL	GARDEN CITY, KS
GCN	AWP	GRAND CANYON NATIONAL PARK	GRAND CANYON, AZ
GEU	AWP	GLENDALE MUNI	GLENDALE, AZ
GFK	AGL	GRAND FORKS INTL	GRAND FORKS, ND
GGG	ASW	EAST TEXAS RGNL	LONGVIEW, TX
GJT	ANM	GRAND JUNCTION REGIONAL	GRAND JUNCTION, CO
GKY	ASW	ARLINGTON MUNI	ARLINGTON, TX
GLH	ASO	GREENVILLE MID-DELTA	GREENVILLE, MS
GLS	ASW	SCHOLES INTL AT GALVESTON	GALVESTON, TX
GMU	ASO	GREENVILLE DOWNTOWN	GREENVILLE, SC
GNV	ASO	GAINESVILLE RGNL	GAINESVILLE, FL
GON	ANE	GROTON-NEW LONDON	GROTON (NEW LONDON) , CT
GPI	ANM	GLACIER PARK INTL	KALISPELL , MT
GPM	ASW	GRAND PRAIRIE MUNI	GRAND PRAIRIE, TX
GPT	ASO	GULFPORT-BILOXI INTL	GULFPORT, MS
GRB	AGL	AUSTIN STRAUBEL INTL	GREEN BAY, WI
GRI	ACE	CENTRAL NEBRASKA RGNL	GRAND ISLAND, NE
GTF	ANM	GREAT FALLS INTL	GREAT FALLS, MT
GTR	ASO	GOLDEN TRIANGLE RGNL	COLUMBUS/W POINT/STARKVILLE , MS
GTU	ASW	GEORGETOWN MUNI	GEORGETOWN, TX
GYH	ASO	DONALDSON FIELD	GREENVILLE, SC
GYR	AWP	PHOENIX GOODYEAR	GOODYEAR, AZ
GYG	AGL	GARY/CHICAGO INTL	GARY, IN
HEF	AEA	MANASSAS RGNL/HARRY P. DAVIS FIELD	WASHINGTON, DC
HFD	ANE	HARTFORD-BRAINARD	HARTFORD, CT
HGR	AEA	HAGERSTOWN RGNL-RICHARD A HENSON FLD	HAGERSTOWN, MD
HHR	AWP	JACK NORTHROP FIELD/HAWTHORNE MUNI	HAWTHORNE, CA
HIO	ANM	PORTLAND-HILLSBORO	PORTLAND, OR
HKS	ASO	HAWKINS FIELD	JACKSON, MS
HKY	ASO	HICKORY RGNL	HICKORY, NC
HLG	AEA	WHEELING OHIO CO	WHEELING, WV
HLN	ANM	HELENA RGNL	HELENA, MT
HND	AWP	HENDERSON EXECUTIVE	LAS VEGAS, NV
HOB	ASW	LEA COUNTY RGNL	HOBBS, NM
HQZ	ASW	MESQUITE METRO	MESQUITE, TX

Table B-4 List of Non-Hub Towers

Location Identifier	Region	Airport Name	City, State
HRL	ASW	VALLEY INTL	HARLINGEN, TX
HSA	ASO	STENNIS INTL	BAY ST LOUIS, MS
HTS	AEA	TRI-STATE/MILTON J. FERGUSON FIELD	HUNTINGTON, WV
HUF	AGL	TERRE HAUTE INTL-HULMAN FIELD	TERRE HAUTE, IN
HUM	ASW	HOUMA-TERREBONNE	HOUMA, LA
HUT	ACE	HUTCHINSON MUNI	HUTCHINSON, KS
HVN	ANE	TWEED-NEW HAVEN	NEW HAVEN, CT
HWD	AWP	HAYWARD EXECUTIVE	HAYWARD, CA
HWO	ASO	NORTH PERRY	HOLLYWOOD, FL
HXD	ASO	HILTON HEAD	HILTON HEAD ISLAND, SC
HYA	ANE	BARNSTABLE MUNI-BOARDMAN/POLANDO FIELD	HYANNIS, MA
HYI	ASW	SAN MARCOS MUNI	SAN MARCOS, TX
IAG	AEA	NIAGARA FALLS INTL	NIAGARA FALLS, NY
IDA	ANM	IDAHO FALLS RGNL	IDAHO FALLS, ID
IFP	AWP	LAUGHLIN/BULLHEAD INTL	BULLHEAD CITY, AZ
ILG	AEA	NEW CASTLE	WILMINGTON, DE
INT	ASO	SMITH REYNOLDS	WINSTON SALEM, NC
IPT	AEA	WILLIAMSPORT RGNL	WILLIAMSPORT, PA
ISM	ASO	KISSIMMEE GATEWAY	ORLANDO, FL
ISO	ASO	KINSTON RGNL JETPORT AT STALLINGS FLD	KINSTON, NC
ITH	AEA	ITHACA TOMPKINS RGNL	ITHACA, NY
IXD	ACE	NEW CENTURY AIRCENTER	OLATHE, KS
JAC	ANM	JACKSON HOLE	JACKSON, WY
JEF	ACE	JEFFERSON CITY MEMORIAL	JEFFERSON CITY, MO
JLN	ACE	JOPLIN RGNL	JOPLIN, MO
JNU	AAL	JUNEAU INTL	JUNEAU, AK
JQF	ASO	CONCORD RGNL	CONCORD, NC
JRF	AWP	KALAELOA (JOHN RODGERS FIELD)	KAPOLEI, HI
JVL	AGL	SOUTHERN WISCONSIN RGNL	JANESVILLE, WI
JXN	AGL	JACKSON COUNTY-REYNOLDS FIELD	JACKSON, MI
LAF	AGL	PURDUE UNIVERSITY	LAFAYETTE, IN
LAL	ASO	LAKELAND LINDER RGNL	LAKELAND, FL
LAN	AGL	CAPITAL REGION INTL	LANSING, MI
LAW	ASW	LAWTON-FORT SILL RGNL	LAWTON, OK
LBE	AEA	ARNOLD PALMER RGNL	LATROBE, PA
LCH	ASW	LAKE CHARLES RGNL	LAKE CHARLES, LA
LEB	ANE	LEBANON MUNI	LEBANON, NH
LEE	ASO	LEESBURG INTL	LEESBURG, FL
LFT	ASW	LAFAYETTE RGNL	LAFAYETTE, LA
LMT	ANM	KLAMATH FALLS	KLAMATH FALLS, OR
LNK	ACE	LINCOLN	LINCOLN, NE
LNS	AEA	LANCASTER	LANCASTER, PA
LOU	ASO	BOWMAN FIELD	LOUISVILLE, KY
LRD	ASW	LAREDO INTL	LAREDO, TX
LSE	AGL	LA CROSSE RGNL	LA CROSSE, WI
LUK	AGL	CINCINNATI MUNI AIRPORT LUNKEN FIELD	CINCINNATI, OH
LVK	AWP	LIVERMORE MUNI	LIVERMORE, CA
LWB	AEA	GREENBRIER VALLEY	LEWISBURG, WV
LWM	ANE	LAWRENCE MUNI	LAWRENCE, MA
LWS	ANM	LEWISTON-NEZ PERCE COUNTY	LEWISTON, ID
LYH	AEA	LYNCHBURG RGNL/PRESTON GLENN FLD	LYNCHBURG, VA
LZU	ASO	GWINNETT COUNTY - BRISCOE FIELD	LAWRENCEVILLE, GA
MBS	AGL	MBS INTL	SAGINAW, MI
MCN	ASO	MIDDLE GEORGIA RGNL	MACON, GA
MDH	AGL	SOUTHERN ILLINOIS	CARBONDALE/MURPHYSBORO, IL

Table B-4 List of Non-Hub Towers

Location Identifier	Region	Airport Name	City, State
MEI	ASO	KEY FIELD	MERIDIAN, MS
MER	AWP	CASTLE	ATWATER, CA
MFD	AGL	MANSFIELD LAHM RGNL	MANSFIELD, OH
MFE	ASW	MC ALLEN MILLER INTL	MC ALLEN, TX
MFR	ANM	ROGUE VALLEY INTL - MEDFORD	MEDFORD, OR
MGM	ASO	MONTGOMERY RGNL (DANNELLY FIELD)	MONTGOMERY, AL
MGW	AEA	MORGANTOWN MUNI-WALTER L. BILL HART FLD	MORGANTOWN, WV
MHK	ACE	MANHATTAN RGNL	MANHATTAN, KS
MHR	AWP	SACRAMENTO MATHER	SACRAMENTO, CA
MIC	AGL	CRYSTAL	MINNEAPOLIS, MN
MIE	AGL	DELAWARE COUNTY RGNL	MUNCIE, IN
MKC	ACE	CHARLES B. WHEELER DOWNTOWN	KANSAS CITY, MO
MKG	AGL	MUSKEGON COUNTY	MUSKEGON, MI
MKK	AWP	MOLOKAI	KAUNAKAKAI, HI
MKL	ASO	MC KELLAR-SIPES RGNL	JACKSON, TN
MLB	ASO	MELBOURNE INTL	MELBOURNE, FL
MLU	ASW	MONROE RGNL	MONROE, LA
MMU	AEA	MORRISTOWN MUNI	MORRISTOWN, NJ
MOB	ASO	MOBILE RGNL	MOBILE, AL
MOD	AWP	MODESTO CITY-CO-HARRY SHAM FLD	MODESTO, CA
MOT	AGL	MINOT INTL	MINOT, ND
MQY	ASO	SMYRNA	SMYRNA, TN
MRI	AAL	MERRILL FIELD	ANCHORAGE, AK
MRY	AWP	MONTEREY RGNL	MONTEREY, CA
MSO	ANM	MISSOULA INTL	MISSOULA, MT
MTN	AEA	MARTIN STATE	BALTIMORE, MD
MVY	ANE	MARTHA'S VINEYARD	VINEYARD HAVEN, MA
MWA	AGL	WILLIAMSON COUNTY RGNL	MARION, IL
MWC	AGL	LAWRENCE J TIMMERMAN	MILWAUKEE, WI
MWH	ANM	GRANT CO INTL	MOSES LAKE, WA
MYF	AWP	MONTGOMERY FIELD	SAN DIEGO, CA
NEW	ASW	LAKEFRONT	NEW ORLEANS, LA
NQA	ASO	MILLINGTON RGNL JETPORT	MILLINGTON, TN
OCF	ASO	OCALA INTL-JIM TAYLOR FIELD	OCALA, FL
OGD	ANM	OGDEN-HINCKLEY	OGDEN, UT
OJC	ACE	JOHNSON COUNTY EXECUTIVE	OLATHE, KS
OLM	ANM	OLYMPIA RGNL	OLYMPIA, WA
OLV	ASO	OLIVE BRANCH	OLIVE BRANCH, MS
OMN	ASO	ORMOND BEACH MUNI	ORMOND BEACH, FL
OPF	ASO	OPA-LOCKA EXECUTIVE	MIAMI, FL
ORH	ANE	WORCESTER RGNL	WORCESTER, MA
ORL	ASO	EXECUTIVE	ORLANDO, FL
OSH	AGL	WITTMAN RGNL	OSHKOSH, WI
OSU	AGL	OHIO STATE UNIVERSITY	COLUMBUS, OH
OTH	ANM	SOUTHWEST OREGON RGNL	NORTH BEND, OR
OUN	ASW	UNIVERSITY OF OKLAHOMA WESTHEIMER	NORMAN, OK
OWB	ASO	OWENSBORO-DAVISS COUNTY	OWENSBORO, KY
OWD	ANE	NORWOOD MEMORIAL	NORWOOD, MA
OXC	ANE	WATERBURY-OXFORD	OXFORD, CT
OXR	AWP	OXNARD	OXNARD, CA
PAE	ANM	SNOHOMISH COUNTY (PAINE FLD)	EVERETT, WA
PAH	ASO	BARKLEY RGNL	PADUCAH, KY
PAO	AWP	PALO ALTO ARPT OF SANTA CLARA CO	PALO ALTO, CA
PDK	ASO	DEKALB-PEACHTREE	ATLANTA, GA
PDT	ANM	EASTERN OREGON RGNL AT PENDLETON	PENDLETON, OR

Table B-4 List of Non-Hub Towers

Location Identifier	Region	Airport Name	City, State
PGD	ASO	PUNTA GORDA	PUNTA GORDA, FL
PHF	AEA	NEWPORT NEWS/WILLIAMSBURG INTL	NEWPORT NEWS, VA
PIA	AGL	GENERAL DOWNING - PEORIA INTL	PEORIA, IL
PIH	ANM	POCATELLO RGNL	POCATELLO, ID
PKB	AEA	MID-OHIO VALLEY RGNL	PARKERSBURG, WV
PMD	AWP	PALMDALE USAF PLANT 42	PALMDALE, CA
PMP	ASO	POMPANO BEACH AIRPARK	POMPANO BEACH, FL
PNE	AEA	NORTHEAST PHILADELPHIA	PHILADELPHIA, PA
POC	AWP	BRACKETT FIELD	LA VERNE, CA
POU	AEA	DUTCHESS COUNTY	POUGHKEEPSIE, NY
PRC	AWP	ERNEST A. LOVE FIELD	PRESCOTT, AZ
PSC	ANM	TRI-CITIES	PASCO, WA
PTK	AGL	OAKLAND COUNTY INTL	PONTIAC, MI
PUB	ANM	PUEBLO MEMORIAL	PUEBLO, CO
PVU	ANM	PROVO MUNI	PROVO, UT
PWA	ASW	WILEY POST	OKLAHOMA CITY, OK
PWK	AGL	CHICAGO EXECUTIVE	CHICAGO/PROSPECT HEIGHTS/WHEELING , IL
RAL	AWP	RIVERSIDE MUNI	RIVERSIDE, CA
RAP	AGL	RAPID CITY RGNL	RAPID CITY, SD
RBD	ASW	DALLAS EXECUTIVE	DALLAS, TX
RDD	AWP	REDDING MUNI	REDDING, CA
RDG	AEA	READING RGNL/CARL A SPAATZ FIELD	READING, PA
RDM	ANM	ROBERTS FIELD	REDMOND, OR
RFD	AGL	CHICAGO/ROCKFORD INTL	CHICAGO/ROCKFORD, IL
RHV	AWP	REID-HILLVIEW OF SANTA CLARA COUNTY	SAN JOSE, CA
RME	AEA	GRIFFISS INTL	ROME, NY
RNM	AWP	RAMONA	RAMONA, CA
RNT	ANM	RENTON MUNI	RENTON, WA
ROA	AEA	ROANOKE RGNL/WOODRUM FIELD	ROANOKE, VA
ROG	ASW	ROGERS MUNI-CARTER FIELD	ROGERS, AR
ROW	ASW	ROSWELL INTL AIR CENTER	ROSWELL, NM
RST	AGL	ROCHESTER INTL	ROCHESTER, MN
RVS	ASW	RICHARD LLOYD JONES JR	TULSA, OK
RYN	AWP	RYAN FIELD	TUCSON, AZ
RYY	ASO	COBB COUNTY-MC COLLUM FIELD	ATLANTA, GA
SAC	AWP	SACRAMENTO EXECUTIVE	SACRAMENTO, CA
SAF	ASW	SANTA FE MUNI	SANTA FE, NM
SAW	AGL	SAWYER INTL	MARQUETTE, MI
SBA	AWP	SANTA BARBARA MUNI	SANTA BARBARA, CA
SBN	AGL	SOUTH BEND INTL	SOUTH BEND, IN
SBP	AWP	SAN LUIS COUNTY RGNL	SAN LUIS OBISPO, CA
SBY	AEA	SALISBURY-OCEAN CITY WICOMICO RGNL	SALISBURY, MD
SCK	AWP	STOCKTON METROPOLITAN	STOCKTON, CA
SDL	AWP	SCOTTSDALE	SCOTTSDALE, AZ
SDM	AWP	BROWN FIELD MUNI	SAN DIEGO, CA
SEE	AWP	GILLESPIE FIELD	SAN DIEGO/EL CAJON , CA
SFF	ANM	FELTS FIELD	SPOKANE, WA
SGJ	ASO	NORTHEAST FLORIDA RGNL	ST AUGUSTINE, FL
SGR	ASW	SUGAR LAND RGNL	HOUSTON, TX
SHV	ASW	SHREVEPORT RGNL	SHREVEPORT, LA
SIG	ASO	FERNANDO LUIS RIBAS DOMINICCI	SAN JUAN, PR
SJT	ASW	SAN ANGELO RGNL/MATHIS FIELD	SAN ANGELO, TX
SLE	ANM	MCNARY FLD	SALEM, OR
SLN	ACE	SALINA RGNL	SALINA, KS
SMO	AWP	SANTA MONICA MUNI	SANTA MONICA, CA

Table B-4 List of Non-Hub Towers

Location Identifier	Region	Airport Name	City, State
SMX	AWP	SANTA MARIA PUB/CAPT G ALLAN HANCOCK FLD	SANTA MARIA, CA
SNS	AWP	SALINAS MUNI	SALINAS, CA
SPG	ASO	ALBERT WHITTED	ST PETERSBURG, FL
SPI	AGL	ABRAHAM LINCOLN CAPITAL	SPRINGFIELD, IL
SQL	AWP	SAN CARLOS	SAN CARLOS, CA
SSF	ASW	STINSON MUNI	SAN ANTONIO, TX
STC	AGL	ST CLOUD RGNL	ST CLOUD, MN
STJ	ACE	ROSECRANS MEMORIAL	ST JOSEPH, MO
STP	AGL	ST PAUL DOWNTOWN HOLMAN FLD	ST PAUL, MN
STS	AWP	CHARLES M. SCHULZ - SONOMA COUNTY	SANTA ROSA, CA
STX	ASO	HENRY E ROHLSSEN	CHRISTIANSTED, VI
SUA	ASO	WITHAM FIELD	STUART, FL
SUN	ANM	FRIEDMAN MEMORIAL	HAILEY, ID
SUS	ACE	SPIRIT OF ST LOUIS	ST LOUIS, MO
SUX	ACE	SIOUX GATEWAY/COL. BUD DAY FIELD	SIOUX CITY, IA
SWF	AEA	STEWART INTL	NEWBURGH, NY
SWO	ASW	STILLWATER RGNL	STILLWATER, OK
TCL	ASO	TUSCALOOSA RGNL	TUSCALOOSA, AL
TEB	AEA	TETERBORO	TETERBORO, NJ
TIW	ANM	TACOMA NARROWS	TACOMA, WA
TIX	ASO	SPACE COAST RGNL	TITUSVILLE, FL
TKI	ASW	COLLIN COUNTY RGNL AT MC KINNEY	DALLAS, TX
TLH	ASO	TALLAHASSEE RGNL	TALLAHASSEE, FL
TMB	ASO	KENDALL-TAMIAMI EXECUTIVE	MIAMI, FL
TOA	AWP	ZAMPERINI FIELD	TORRANCE, CA
TOL	AGL	TOLEDO EXPRESS	TOLEDO, OH
TOP	ACE	PHILIP BILLARD MUNI	TOPEKA, KS
TRI	ASO	TRI-CITIES RGNL TN/VA	BRISTOL/JOHNSON/KINGSPORT, TN
TTD	ANM	PORTLAND-TROUTDALE	PORTLAND, OR
TTN	AEA	TRENTON MERCER	TRENTON, NJ
TUP	ASO	TUPELO RGNL	TUPELO, MS
TVC	AGL	CHERRY CAPITAL	TRAVERSE CITY, MI
TWF	ANM	JOSLIN FIELD - MAGIC VALLEY RGNL	TWIN FALLS, ID
TXK	ASW	TEXARKANA RGNL-WEBB FIELD	TEXARKANA, AR
TYR	ASW	TYLER POUNDS RGNL	TYLER, TX
TZR	AGL	BOLTON FIELD	COLUMBUS, OH
UES	AGL	WAUKESHA COUNTY	WAUKESHA, WI
UGN	AGL	WAUKEGAN RGNL	CHICAGO/WAUKEGAN, IL
UNV	AEA	UNIVERSITY PARK	STATE COLLEGE, PA
VCT	ASW	VICTORIA RGNL	VICTORIA, TX
VCV	AWP	SOUTHERN CALIFORNIA LOGISTICS	VICTORVILLE, CA
VGT	AWP	NORTH LAS VEGAS	LAS VEGAS, NV
VNY	AWP	VAN NUYS	VAN NUYS, CA
VQQ	ASO	CECIL	JACKSONVILLE, FL
VRB	ASO	VERO BEACH MUNI	VERO BEACH, FL
WDG	ASW	ENID WOODRING RGNL	ENID, OK
WHP	AWP	WHITEMAN	LOS ANGELES, CA
WJF	AWP	GENERAL WM J FOX AIRFIELD	LANCASTER, CA
YIP	AGL	WILLOW RUN	DETROIT, MI
YKM	ANM	YAKIMA AIR TERMINAL/MCALLISTER FIELD	YAKIMA, WA
YNG	AGL	YOUNGSTOWN-WARREN RGNL	YOUNGSTOWN/WARREN, OH

Listed 381 Airports.

Table B-5 List of FAA Contract Towers

Location Identifier	Region	Airport Name	City, State
ABY	ASO	SOUTHWEST GEORGIA RGNL	ALBANY, GA
ADM	ASW	ARDMORE MUNI	ARDMORE, OK
ADQ	AAL	KODIAK	KODIAK, AK
AEG	ASW	DOUBLE EAGLE II	ALBUQUERQUE, NM
AEX	ASW	ALEXANDRIA INTL	ALEXANDRIA, LA
AHN	ASO	ATHENS/BEN EPPS	ATHENS, GA
AKN	AAL	KING SALMON	KING SALMON, AK
ALN	AGL	ST LOUIS RGNL	ALTON/ST LOUIS, IL
ALW	ANM	WALLA WALLA RGNL	WALLA WALLA, WA
ANE	AGL	ANOKA COUNTY-BLAINE ARPT(JANES FIELD)	MINNEAPOLIS, MN
APF	ASO	NAPLES MUNI	NAPLES, FL
ARA	ASW	ACADIANA RGNL	NEW IBERIA, LA
ASG	ASW	SPRINGDALE MUNI	SPRINGDALE, AR
ASH	ANE	BOIRE FIELD	NASHUA, NH
ATW	AGL	OUTAGAMIE COUNTY RGNL	APPLETON, WI
BAF	ANE	WESTFIELD-BARNES RGNL	WESTFIELD/SPRINGFIELD, MA
BAK	AGL	COLUMBUS MUNI	COLUMBUS, IN
BAZ	ASW	NEW BRAUNFELS RGNL	NEW BRAUNFELS, TX
BBG	ACE	BRANSON	BRANSON, MO
BCT	ASO	BOCA RATON	BOCA RATON, FL
BDR	ANE	IGOR I SIKORSKY MEMORIAL	BRIDGEPORT, CT
BET	AAL	BETHEL	BETHEL, AK
BFM	ASO	MOBILE DOWNTOWN	MOBILE, AL
BKL	AGL	BURKE LAKEFRONT	CLEVELAND, OH
BKV	ASO	BROOKSVILLE-TAMPA BAY RGNL	BROOKSVILLE, FL
BLI	ANM	BELLINGHAM INTL	BELLINGHAM, WA
BMG	AGL	MONROE COUNTY	BLOOMINGTON, IN
BMI	AGL	CENTRAL IL RGNL ARPT AT BLOOMINGTON-NORMAL	BLOOMINGTON/NORMAL, IL
BQN	ASO	RAFAEL HERNANDEZ	AGUADILLA, PR
BRO	ASW	BROWNSVILLE/SOUTH PADRE ISLAND INTL	BROWNSVILLE, TX
BTL	AGL	W K KELLOGG	BATTLE CREEK, MI
BVY	ANE	BEVERLY MUNI	BEVERLY, MA
BZN	ANM	BOZEMAN YELLOWSTONE INTL	BOZEMAN, MT
CGF	AGL	CUYAHOGA COUNTY	CLEVELAND, OH
CHD	AWP	CHANDLER MUNI	CHANDLER, AZ
CHO	AEA	CHARLOTTESVILLE-ALBEMARLE	CHARLOTTESVILLE, VA
CIC	AWP	CHICO MUNI	CHICO, CA
CLL	ASW	EASTERWOOD FIELD	COLLEGE STATION, TX
CNW	ASW	TSTC WACO	WACO, TX
COU	ACE	COLUMBIA RGNL	COLUMBIA, MO
CRE	ASO	GRAND STRAND	NORTH MYRTLE BEACH, SC
CRG	ASO	JACKSONVILLE EXECUTIVE AT CRAIG	JACKSONVILLE, FL
CWA	AGL	CENTRAL WISCONSIN	MOSINEE, WI
CWF	ASW	CHENNAULT INTL	LAKE CHARLES, LA
CXO	ASW	LONE STAR EXECUTIVE	HOUSTON , TX
CXY	AEA	CAPITAL CITY	HARRISBURG, PA
CYS	ANM	CHEYENNE RGNL/JERRY OLSON FIELD	CHEYENNE, WY
DBQ	ACE	DUBUQUE RGNL	DUBUQUE, IA
DEC	AGL	DECATUR	DECATUR, IL
DET	AGL	COLEMAN A. YOUNG MUNI	DETROIT, MI

Table B-5 List of FAA Contract Towers

Location Identifier	Region	Airport Name	City, State
DHN	ASO	DOTHAN RGNL	DOTHAN, AL
DTN	ASW	SHREVEPORT DOWNTOWN	SHREVEPORT, LA
DTO	ASW	DENTON MUNI	DENTON, TX
DXR	ANE	DANBURY MUNI	DANBURY, CT
EAU	AGL	CHIPPEWA VALLEY RGNL	EAU CLAIRE, WI
ECP	ASO	NORTHWEST FLORIDA BEACHES INTL	PANAMA CITY, FL
EGE	ANM	EAGLE COUNTY RGNL	EAGLE, CO
ENA	AAL	KENAI MUNI	KENAI, AK
ENW	AGL	KENOSHA RGNL	KENOSHA, WI
ESN	AEA	EASTON/NEWNAM FIELD	EASTON, MD
EVB	ASO	NEW SMYRNA BEACH MUNI	NEW SMYRNA BEACH, FL
EWB	ANE	NEW BEDFORD RGNL	NEW BEDFORD, MA
EWN	ASO	COASTAL CAROLINA REGIONAL	NEW BERN, NC
EYW	ASO	KEY WEST INTL	KEY WEST, FL
FDK	AEA	FREDERICK MUNI	FREDERICK, MD
FIN	ASO	FLAGLER COUNTY	PALM COAST, FL
FLG	AWP	FLAGSTAFF PULLIAM	FLAGSTAFF, AZ
FMN	ASW	FOUR CORNERS RGNL	FARMINGTON, NM
FMY	ASO	PAGE FIELD	FORT MYERS, FL
FOE	ACE	FORBES FIELD	TOPEKA, KS
FOK	AEA	FRANCIS S GABRESKI	WESTHAMPTON BEACH, NY
FTG	ANM	FRONT RANGE	DENVER, CO
FTY	ASO	FULTON COUNTY AIRPORT-BROWN FIELD	ATLANTA, GA
FUL	AWP	FULLERTON MUNI	FULLERTON, CA
FWS	ASW	FORT WORTH SPINKS	FORT WORTH, TX
FYV	ASW	DRAKE FIELD	FAYETTEVILLE, AR
GCK	ACE	GARDEN CITY RGNL	GARDEN CITY, KS
GEU	AWP	GLENDALE MUNI	GLENDALE, AZ
GJT	ANM	GRAND JUNCTION REGIONAL	GRAND JUNCTION, CO
GKY	ASW	ARLINGTON MUNI	ARLINGTON, TX
GLH	ASO	GREENVILLE MID-DELTA	GREENVILLE, MS
GLS	ASW	SCHOLES INTL AT GALVESTON	GALVESTON, TX
GMU	ASO	GREENVILLE DOWNTOWN	GREENVILLE, SC
GNV	ASO	GAINESVILLE RGNL	GAINESVILLE, FL
GON	ANE	GROTON-NEW LONDON	GROTON (NEW LONDON) , CT
GPI	ANM	GLACIER PARK INTL	KALISPELL , MT
GPM	ASW	GRAND PRAIRIE MUNI	GRAND PRAIRIE, TX
GRI	ACE	CENTRAL NEBRASKA RGNL	GRAND ISLAND, NE
GSN	AWP	FRANCISCO C. ADA/SAIPAN INTL	SAIPAN ISLAND, MP
GTR	ASO	GOLDEN TRIANGLE RGNL	COLUMBUS/W POINT/STARKVILLE , MS
GTU	ASW	GEORGETOWN MUNI	GEORGETOWN, TX
GUM	AWP	GUAM INTL	GUAM, GU
GYH	ASO	DONALDSON FIELD	GREENVILLE, SC
GYR	AWP	PHOENIX GOODYEAR	GOODYEAR, AZ
GYV	AGL	GARY/CHICAGO INTL	GARY, IN
HFD	ANE	HARTFORD-BRAINARD	HARTFORD, CT
HGR	AEA	HAGERSTOWN RGNL-RICHARD A HENSON FLD	HAGERSTOWN, MD
HHR	AWP	JACK NORTHROP FIELD/HAWTHORNE MUNI	HAWTHORNE, CA
HKS	ASO	HAWKINS FIELD	JACKSON, MS
HKY	ASO	HICKORY RGNL	HICKORY, NC

Table B-5 List of FAA Contract Towers

Location Identifier	Region	Airport Name	City, State
HLG	AEA	WHEELING OHIO CO	WHEELING, WV
HND	AWP	HENDERSON EXECUTIVE	LAS VEGAS, NV
HOB	ASW	LEA COUNTY RGNL	HOBBS, NM
HQZ	ASW	MESQUITE METRO	MESQUITE, TX
HRL	ASW	VALLEY INTL	HARLINGEN, TX
HSA	ASO	STENNIS INTL	BAY ST LOUIS, MS
HUM	ASW	HOUMA-TERREBONNE	HOUMA, LA
HUT	ACE	HUTCHINSON MUNI	HUTCHINSON, KS
HVN	ANE	TWEED-NEW HAVEN	NEW HAVEN, CT
HWO	ASO	NORTH PERRY	HOLLYWOOD, FL
HXD	ASO	HILTON HEAD	HILTON HEAD ISLAND, SC
HYA	ANE	BARNSTABLE MUNI-BOARDMAN/POLANDO FIELD	HYANNIS, MA
HYI	ASW	SAN MARCOS MUNI	SAN MARCOS, TX
IAG	AEA	NIAGARA FALLS INTL	NIAGARA FALLS, NY
IDA	ANM	IDAHO FALLS RGNL	IDAHO FALLS, ID
IFP	AWP	LAUGHLIN/BULLHEAD INTL	BULLHEAD CITY, AZ
INT	ASO	SMITH REYNOLDS	WINSTON SALEM, NC
IPT	AEA	WILLIAMSPORT RGNL	WILLIAMSPORT, PA
ISM	ASO	KISSIMMEE GATEWAY	ORLANDO, FL
ISO	ASO	KINSTON RGNL JETPORT AT STALLINGS FLD	KINSTON, NC
ITH	AEA	ITHACA TOMPKINS RGNL	ITHACA, NY
IWA	AWP	PHOENIX-MESA GATEWAY	PHOENIX, AZ
IXD	ACE	NEW CENTURY AIRCENTER	OLATHE, KS
JAC	ANM	JACKSON HOLE	JACKSON, WY
JEF	ACE	JEFFERSON CITY MEMORIAL	JEFFERSON CITY, MO
JLN	ACE	JOPLIN RGNL	JOPLIN, MO
JQF	ASO	CONCORD RGNL	CONCORD, NC
JRF	AWP	KALAELOA (JOHN RODGERS FIELD)	KAPOLEI, HI
JVL	AGL	SOUTHERN WISCONSIN RGNL	JANESVILLE, WI
JXN	AGL	JACKSON COUNTY-REYNOLDS FIELD	JACKSON, MI
KOA	AWP	KONA INTL AT KEAHOLE	KAILUA/KONA, HI
LAL	ASO	LAKELAND LINDER RGNL	LAKELAND, FL
LAW	ASW	LAWTON-FORT SILL RGNL	LAWTON, OK
LBE	AEA	ARNOLD PALMER RGNL	LATROBE, PA
LEB	ANE	LEBANON MUNI	LEBANON, NH
LEE	ASO	LEESBURG INTL	LEESBURG, FL
LIH	AWP	LIHUE	LIHUE, HI
LMT	ANM	KLAMATH FALLS	KLAMATH FALLS, OR
LNS	AEA	LANCASTER	LANCASTER, PA
LRD	ASW	LAREDO INTL	LAREDO, TX
LSE	AGL	LA CROSSE RGNL	LA CROSSE, WI
LUK	AGL	CINCINNATI MUNI AIRPORT LUNKEN FIELD	CINCINNATI, OH
LWB	AEA	GREENBRIER VALLEY	LEWISBURG, WV
LWM	ANE	LAWRENCE MUNI	LAWRENCE, MA
LWS	ANM	LEWISTON-NEZ PERCE COUNTY	LEWISTON, ID
LYH	AEA	LYNCHBURG RGNL/PRESTON GLENN FLD	LYNCHBURG, VA
LZU	ASO	GWINNETT COUNTY - BRISCOE FIELD	LAWRENCEVILLE, GA
MCN	ASO	MIDDLE GEORGIA RGNL	MACON, GA
MDH	AGL	SOUTHERN ILLINOIS	CARBONDALE/MURPHYSBORO, IL
MEI	ASO	KEY FIELD	MERIDIAN, MS

Table B-5 List of FAA Contract Towers

Location Identifier	Region	Airport Name	City, State
MER	AWP	CASTLE	ATWATER, CA
MFE	ASW	MC ALLEN MILLER INTL	MC ALLEN, TX
MFR	ANM	ROGUE VALLEY INTL - MEDFORD	MEDFORD, OR
MGW	AEA	MORGANTOWN MUNI-WALTER L. BILL HART FLD	MORGANTOWN, WV
MHK	ACE	MANHATTAN RGNL	MANHATTAN, KS
MHR	AWP	SACRAMENTO MATHER	SACRAMENTO, CA
MIE	AGL	DELAWARE COUNTY RGNL	MUNCIE, IN
MKK	AWP	MOLOKAI	KAUNAKAKAI, HI
MKL	ASO	MC KELLAR-SIPES RGNL	JACKSON, TN
MLB	ASO	MELBOURNE INTL	MELBOURNE, FL
MOD	AWP	MODESTO CITY-CO-HARRY SHAM FLD	MODESTO, CA
MOT	AGL	MINOT INTL	MINOT, ND
MQY	ASO	SMYRNA	SMYRNA, TN
MSO	ANM	MISSOULA INTL	MISSOULA, MT
MTN	AEA	MARTIN STATE	BALTIMORE, MD
MVY	ANE	MARTHA'S VINEYARD	VINEYARD HAVEN, MA
MWA	AGL	WILLIAMSON COUNTY RGNL	MARION, IL
MWC	AGL	LAWRENCE J TIMMERMAN	MILWAUKEE, WI
NQA	ASO	MILLINGTON RGNL JETPORT	MILLINGTON, TN
OCF	ASO	OCALA INTL-JIM TAYLOR FIELD	OCALA, FL
OGD	ANM	OGDEN-HINCKLEY	OGDEN, UT
OJC	ACE	JOHNSON COUNTY EXECUTIVE	OLATHE, KS
OLM	ANM	OLYMPIA RGNL	OLYMPIA, WA
OLV	ASO	OLIVE BRANCH	OLIVE BRANCH, MS
OMN	ASO	ORMOND BEACH MUNI	ORMOND BEACH, FL
OPF	ASO	OPA-LOCKA EXECUTIVE	MIAMI, FL
ORH	ANE	WORCESTER RGNL	WORCESTER, MA
OSH	AGL	WITTMAN RGNL	OSHKOSH, WI
OSU	AGL	OHIO STATE UNIVERSITY	COLUMBUS, OH
OTH	ANM	SOUTHWEST OREGON RGNL	NORTH BEND, OR
OUN	ASW	UNIVERSITY OF OKLAHOMA WESTHEIMER	NORMAN, OK
OWB	ASO	OWENSBORO-DAVIESS COUNTY	OWENSBORO, KY
OWD	ANE	NORWOOD MEMORIAL	NORWOOD, MA
OXC	ANE	WATERBURY-OXFORD	OXFORD, CT
OXR	AWP	OXNARD	OXNARD, CA
PAH	ASO	BARKLEY RGNL	PADUCAH, KY
PDT	ANM	EASTERN OREGON RGNL AT PENDLETON	PENDLETON, OR
PGD	ASO	PUNTA GORDA	PUNTA GORDA, FL
PIH	ANM	POCATELLO RGNL	POCATELLO, ID
PKB	AEA	MID-OHIO VALLEY RGNL	PARKERSBURG, WV
PMD	AWP	PALMDALE USAF PLANT 42	PALMDALE, CA
PMP	ASO	POMPANO BEACH AIRPARK	POMPANO BEACH, FL
PVU	ANM	PROVO MUNI	PROVO, UT
PWA	ASW	WILEY POST	OKLAHOMA CITY, OK
RAL	AWP	RIVERSIDE MUNI	RIVERSIDE, CA
RAP	AGL	RAPID CITY RGNL	RAPID CITY, SD
RBD	ASW	DALLAS EXECUTIVE	DALLAS, TX
RDD	AWP	REDDING MUNI	REDDING, CA
RDM	ANM	ROBERTS FIELD	REDMOND, OR
RME	AEA	GRIFFISS INTL	ROME, NY

Table B-5 List of FAA Contract Towers

Location Identifier	Region	Airport Name	City, State
RNM	AWP	RAMONA	RAMONA, CA
RNT	ANM	RENTON MUNI	RENTON, WA
ROG	ASW	ROGERS MUNI-CARTER FIELD	ROGERS, AR
RYN	AWP	RYAN FIELD	TUCSON, AZ
RYY	ASO	COBB COUNTY-MC COLLUM FIELD	ATLANTA, GA
SAC	AWP	SACRAMENTO EXECUTIVE	SACRAMENTO, CA
SAF	ASW	SANTA FE MUNI	SANTA FE, NM
SAW	AGL	SAWYER INTL	MARQUETTE, MI
SBP	AWP	SAN LUIS COUNTY RGNL	SAN LUIS OBISPO, CA
SBY	AEA	SALISBURY-OCEAN CITY WICOMICO RGNL	SALISBURY, MD
SDM	AWP	BROWN FIELD MUNI	SAN DIEGO, CA
SFF	ANM	FELTS FIELD	SPOKANE, WA
SGJ	ASO	NORTHEAST FLORIDA RGNL	ST AUGUSTINE, FL
SGR	ASW	SUGAR LAND RGNL	HOUSTON, TX
SIG	ASO	FERNANDO LUIS RIBAS DOMINICCI	SAN JUAN, PR
SJT	ASW	SAN ANGELO RGNL/MATHIS FIELD	SAN ANGELO, TX
SLE	ANM	MCNARY FLD	SALEM, OR
SLN	ACE	SALINA RGNL	SALINA, KS
SMX	AWP	SANTA MARIA PUB/CAPT G ALLAN HANCOCK FLD	SANTA MARIA, CA
SNS	AWP	SALINAS MUNI	SALINAS, CA
SPG	ASO	ALBERT WHITTED	ST PETERSBURG, FL
SQL	AWP	SAN CARLOS	SAN CARLOS, CA
SSF	ASW	STINSON MUNI	SAN ANTONIO, TX
STC	AGL	ST CLOUD RGNL	ST CLOUD, MN
STJ	ACE	ROSECRANS MEMORIAL	ST JOSEPH, MO
STX	ASO	HENRY E ROHLSSEN	CHRISTIANSTED, VI
SUA	ASO	WITHAM FIELD	STUART, FL
SUN	ANM	FRIEDMAN MEMORIAL	HAILEY, ID
SWF	AEA	STEWART INTL	NEWBURGH, NY
SWO	ASW	STILLWATER RGNL	STILLWATER, OK
TCL	ASO	TUSCALOOSA RGNL	TUSCALOOSA, AL
TIW	ANM	TACOMA NARROWS	TACOMA, WA
TIX	ASO	SPACE COAST RGNL	TITUSVILLE, FL
TKI	ASW	COLLIN COUNTY RGNL AT MC KINNEY	DALLAS, TX
TOP	ACE	PHILIP BILLARD MUNI	TOPEKA, KS
TTD	ANM	PORTLAND-TROUTDALE	PORTLAND, OR
TTN	AEA	TRENTON MERCER	TRENTON, NJ
TUP	ASO	TUPELO RGNL	TUPELO, MS
TXK	ASW	TEXARKANA RGNL-WEBB FIELD	TEXARKANA, AR
TYR	ASW	TYLER POUNDS RGNL	TYLER, TX
TZR	AGL	BOLTON FIELD	COLUMBUS, OH
UES	AGL	WAUKESHA COUNTY	WAUKESHA, WI
UGN	AGL	WAUKEGAN RGNL	CHICAGO/WAUKEGAN, IL
UNV	AEA	UNIVERSITY PARK	STATE COLLEGE, PA
VCT	ASW	VICTORIA RGNL	VICTORIA, TX
VCV	AWP	SOUTHERN CALIFORNIA LOGISTICS	VICTORVILLE, CA
VQQ	ASO	CECIL	JACKSONVILLE, FL
WDG	ASW	ENID WOODRING RGNL	ENID, OK
WHP	AWP	WHITEMAN	LOS ANGELES, CA
WJF	AWP	GENERAL WM J FOX AIRFIELD	LANCASTER, CA

Table B-5 List of FAA Contract Towers

Location Identifier	Region	Airport Name	City, State
XNA	ASW	NORTHWEST ARKANSAS RGNL	FAYETTEVILLE/SPRINGDALE/, AR
YKM	ANM	YAKIMA AIR TERMINAL/MCALLISTER FIELD	YAKIMA, WA

Listed 252 Airports.