

Terminal Area Forecast Summary



**Fiscal Years
2004-2020**



March 2005

**U.S. Department of Transportation
Federal Aviation Administration
FAA-APO-05-1**

Preface

This publication provides aviation data users with summary historical and forecast statistics on passenger demand and aviation activity at U.S. airports. The summary level forecasts are based on individual airport projections.

The Terminal Area Forecast (TAF) includes forecasts for active airports in the National Plan of Integrated Airport Systems (NPIAS). The Federal Aviation Administration's (FAA) Statistics and Forecast Branch, Office of Aviation Policy and Plans, develops the TAF. As its primary input, the TAF initially used the national forecasts of aviation activity contained in *FAA Aerospace Forecasts, Fiscal Years 2004-2015 (March 2004)*. The final TAF considers the forecasts and assumptions contained in *FAA Aerospace Forecasts, Fiscal Years 2005-2016 (March 2005)*. The tables for the national forecasts can be found at <http://apo.faa.gov/pubs.asp>.

The TAF can be accessed from the Internet. The TAF model and TAF database are located at <http://www.apo.data.faa.gov/>. The TAF model allows users to create their own forecast scenarios. The TAF database, which contains a query data application, allows the public to access and print historical (1976 to 2003) and forecast (2004 to 2020) aviation activity data by individual airport, state, or FAA region.

The FAA welcomes public comment on the forecasts, as well as suggestions for improving the usefulness of the TAF.

A handwritten signature in black ink, appearing to read "Robert L. Bowles", is written over a horizontal line.

Robert L. Bowles
Manager, Statistics and Forecast Branch
Office of Aviation Policy and Plans

Acknowledgments

This document was prepared by the Statistics and Forecast Branch of the FAA Office of Aviation Policy and Plans under the direction of Robert L. Bowles, Manager, Statistics and Forecast Branch. Daniel E. Taylor and Peter LeBoff have primary responsibility for the development of the forecasts. Roger Schaufele and Cheryl Miner, industry economists, also contributed their valuable support in the development of forecasts for the 35 Operational Evolution Plan (OEP) airports.

The software support was executed under the direction of Carlton R. Wine, Manager, Information Systems Branch. Mr. Wine and his staff organize and manage the data bases used to produce the forecasts, update the computer programs, and carry out the

computer operations necessary to produce the individual airport forecasts. We extend a special thanks to Philip Sperry and Damien Agostinelli who provided invaluable programming support for the TAF software and made accessing and analyzing this airport data so much more efficient.

Special acknowledgments are made to FAA Airports staff in the Regional and Airport District Offices for their assistance in coordinating the regional reviews, state input, and forecast recommendations. The reviews and comments of the regional offices were extremely important and useful in guiding the Statistics and Forecast Branch in making adjustments to the preliminary version of the forecasts. Their efforts have enhanced the accuracy and credibility of the final product.

Table of Contents

	Page
Preface	i
Acknowledgments.....	ii
Table of Contents.....	iii
Summary Historical and Forecast Highlights.....	1
Forecast Process.....	3
TAF and National Forecast Totals.....	6
National Summary Tables	
Table S-1 Enplanements at the 35 OEP Airports.....	9
Graph S-1 Enplanements Growth Rates for the 35 OEP Airports 2003 to 2020	10
Table S-2 Airport Operations at the 35 OEP Airports	11
Graph S-2 Airport Operations Growth Rates for the 35 OEP Airports 2003 to 2020.....	12
Table S-3 Air Traffic Control Towers and Contract Towers by Region and State	13
Table S-4 Ranking of Top 100 FAA Towers by Total Enplanements, FY 2003	14
Table S-5 Summary of Enplanements and Airport Operations at FAA Towers and Contract Towers ...	17
Table S-6 Commercial Airport Operations Summary by Region.....	18
Table S-7 Itinerant Airport Operations Summary by Region.....	19
Table S-8 Total Airport Operations Summary by Region.....	20
Table S-9 Instrument Operations Summary by Region.....	21
Table S-10 Enplanements Summary by Region.....	22
Table S-11 Based Aircraft Summary by Region.....	23
Appendix A: Description of Activity Measures	A-1
Appendix B: List of FAA Towers by Hub Size and FAA Contract Towers	B-1

Summary Historical and Forecast Highlights

- A total of 643.9 million passengers were enplaned at U.S. airports in 2003; FAA and Federal contract towered airports accounted for 640.5 million enplanements.
- The top 100 air carrier airports accounted for 607.7 million enplanements in 2003, or 94 percent of total U.S. enplanements.
- FAA towers handled 47.0 million operations (takeoffs and landings) in 2003, including 22.5 million commercial aircraft operations.
- Towers operated under Federal contract by FAA handled 15.8 million operations in 2003, including 1.7 million commercial operations.
- The 35 Operational Evolution Plan (OEP) airports enplaned 470.3 million passengers in 2003. These airports are projected to enplane 847.6 million passengers in 2020, an 80.2 percent increase over the forecast period (or 3.5 percent annually).
- The 33 large hub airports¹ enplaned 460.5 million passengers in 2003. These airports are projected to enplane 832.4 million passengers in 2020, an 80.8 percent increase over the 17-year period (or 3.5 percent annually).
- The 35 medium hub airports² recorded 113.9 million enplanements in 2003. These airports are projected to enplane 191.3 million passengers in 2020, a 67.9 percent increase over the 17-year period (or 3.1 percent annually).
- Atlanta (38.6 million enplanements), Chicago O'Hare (32.5 million), Los Angeles (26.6 million), Dallas/Ft. Worth (24.6 million), and Phoenix (18.2 million) led U.S. commercial airports in passenger enplanements, accounting for 21.8 percent of enplanements at U.S. airports.
- Atlanta is projected to remain the country's busiest airport, as measured by passenger enplanements, through the forecast period with a projected 65.5 million enplaned passengers in 2020. Chicago O'Hare is projected to enplane 52.7 million passengers in 2020, followed by Los Angeles with 48.3 million enplanements.
- Enplanements at Washington Dulles, Ft. Lauderdale, and Philadelphia airports are projected to grow fastest among the 35 OEP airports. The annual growth rates at these airports are forecast to increase by 7.8, 5.2, and 4.9 percent per year, respectively, over the forecast period.
- In terms of total operations, Chicago O'Hare was the busiest U.S. airport in 2003 with 923,000 aircraft operations. Atlanta and Dallas/Ft. Worth were the second and third busiest airports with 895,000 and 769,000 operations, respectively.
- By 2020, Atlanta is expected to lead the nation in total operations with a projected 1.4 million operations. Chicago O'Hare (1.3 million operations) is projected to

¹ Airports enplaning one percent or more of total enplanements.

² Airports enplaning 0.25 to 0.99 percent of total enplanements.

drop into second place with Washington Dulles (1.1 million operations) moving up to third place.

- The FAA's Southern region airports enplaned more passengers than any other region with 147.0 million passengers in 2003, or 23 percent of U.S. enplanements. The Western Pacific region was second with 133.4 million enplanements, or 21 percent of the total.
- The Southern region is expected to maintain its lead in passenger enplanements, reaching 265.7 million by 2020. The Western Pacific region is projected to re-

main in second place with 234.8 million enplanements.

- The Southern region also led all FAA regions in the number of aircraft operations with 25.6 million in 2003. The Southern region is expected to remain first in 2020 with 30.2 million operations. The Great Lakes and Western Pacific regions ran second and third in aircraft operations in 2003 with 20.2 and 19.9 million, respectively. In 2020, the Western Pacific region is projected to remain in second place with 24.0 million operations and the Great Lakes region is projected to remain in third place with 22.9 million operations.

Forecast Process

Introduction

The Terminal Area Forecast (TAF) contains historical and forecast data for enplanements, airport operations, instrument operations, and based aircraft. The data cover the 266 FAA towered airports, 219 Federal contract tower airports, 30 terminal radar approach control facilities, and 2,959 non-FAA airports as of September 30, 2003. Data in the TAF are presented on a U.S. Government fiscal year basis (October through September).

The TAF is available on the Internet. The TAF model and TAF database are located at <http://www.apo.data.faa.gov/>. The TAF model allows users to create their own forecast scenarios. The TAF database allows public access to historical and forecast aviation activity data by individual airport, state, or FAA region. In addition, archives of the TAF from previous years are available at <http://api.hq.faa.gov/pubs.asp>.

The TAF is prepared to assist the FAA in meeting its planning, budgeting, and staffing requirements. In addition, state aviation authorities and other aviation planners use the TAF as a basis for planning future airport improvements.

This document presents a set of summary tables on airport activity statistics. The airport activity data contained in the TAF consist of the following:

- ◆ *enplanements* (sum of originating and connecting passengers) for air carriers and commuters;
- ◆ *itinerant operations* for air carriers, commuters and air taxis, general aviation (GA), and military aircraft;
- ◆ *local operations* for GA and military aircraft; and
- ◆ *total instrument operations* for aircraft operations under radar control.

Data presented in the TAF show historical information from 1976 through 2003 and forecasts for 2004 to 2020.³ Appendix A provides a detailed description of the activity data elements in the TAF. Appendix B provides a list of FAA airports by hub size and a list of FAA contract towers.

Forecast Method

Aviation activity forecasts for FAA-towered and Federal contract towered airports are developed using historical relationships between airport passenger demand and/or activity measures and local and national factors that influence aviation activity. Each estimate is examined for its reasonableness and consistency by comparisons with historical trends of airport activity. If forecasts deviate from their expected trend, FAA uses other statistical techniques to reforecast the series. Other methods may include use of regression analysis and the use of growth rates developed separately from the TAF. The TAF may incorporate estimates prepared by local authorities and/or recent FAA-approved airport master plan forecasts, when FAA forecast staff concludes that the methods used to develop these forecasts are acceptable.

³ Operations data for FAA towers and Federal contract towers for 2004 are actual.

In addition, the 35 airports in FAA's Operational Evolution Plan (OEP) as well as eight secondary commercial service airports in the large hub cities receive a more in-depth review by FAA economists. The analyses of these hub city airports include additional consideration for the effect of local economic variables (such as income and employment) and the growth of originating and connecting traffic as well as the price of flying from that airport. The hub forecasts also include assumptions regarding the seating capacity and load factors for commercial aircraft operating out of the airport. The recent substantial changes in aviation activity necessitated increased efforts to develop the near-term forecasts for the large hub airports. These efforts included the use of airport authority statistics to estimate baseline passenger levels; the use of future Official Airline Guide (OAG) schedules to project near-term departures and seats; and the use of month-over-month trends in enplanements per departure to project near-term enplanement and activity levels.

The TAF assumes an unconstrained demand for aviation services based upon local and national economic conditions as well as conditions within the aviation industry. In other words, an airport's forecast is developed independent of the ability of the airport and the air traffic control system to furnish the capacity required to meet demand. However, if the airport historically functions under constrained conditions, the FAA forecast may reflect those constraints since they are embedded in historical data. In statistical terms, the relationships between economic growth data and data representing growth in aviation activity reflect those constraints.

Because military operations forecasts have national security implications, the Department of Defense (DOD) provides only lim-

ited information on future aviation activity. Hence, the TAF projects military activity at its present level except when FAA has specific knowledge of a change. For instance, DOD may announce a base closing or may shift an Air Force wing from one base to another.

For all FAA towered airports and non-FAA facilities with air carrier or commuter passenger service, the TAF corresponds to prevailing local and national trends. For non-FAA facilities, which rely solely on Form 5010 data for general aviation activity levels, operations levels are held constant unless otherwise specified by a local or regional FAA official.

Forecast Review Process

Initially, FAA headquarters staff and management review FAA and Federal contract tower airport forecasts. These preliminary estimates are then submitted to FAA regional and district offices for review. Suggested changes made by the FAA regional staff are reviewed and, if determined reasonable by APO staff economists, are incorporated into the TAF. Significant increases in commercial activity are normally incorporated into the TAF only where APO receives verifiable evidence of a firm commitment by an air carrier or commuter airline to initiate new service.

Summary statistics presented in the TAF differ marginally from the national totals contained in *FAA Aerospace Forecasts: Fiscal Years 2005-2016 (March 2005)*. Reasons for the differences are threefold. First, the TAF forecast methods rely, in part, upon an airport's historical national share of aviation activity, but also consider airport specific trends. In particular, large hub airport forecasts are based, in part, on the projected local

economic activity and airport specific airline fares. Second, the TAF includes facilities not serviced by the FAA in its totals. These facilities make up a large share of the general aviation operations activity shown in the summary tables. Finally, individual forecasts are not scaled to force aggregates to equal national totals.

Data Sources

The development of the TAF begins with an update of the latest historical passenger and aircraft activity, using information derived from several sources. FAA's National Flight Data Center provides general airport information such as the airport name, location, and location identifier. Airport operations and instrument (radar assisted) operations data for airports with FAA and Federal contract air traffic control services are reported by FAA air traffic and Federal contract tower staff. Operations at non-FAA airports are taken

from FAA Form 5010 reports on aviation activity at the airport as estimated by FAA inspectors or information provided by airport managers, state aviation activity surveys, and other sources.

U.S. domestic and international (U.S. and foreign flag carriers) enplanements are derived from the Department of Transportation's T-100 database. Commuter enplanements are derived from DOT T-100 and 298-C data.⁴

Based aircraft data are supplied by state aviation officials and reported on FAA Form 5010. These data show numbers of aircraft, mostly general aviation aircraft, permanently based at an airport.

The TAF contains actual historical operations data through fiscal year 2004 for FAA and Federal contract tower airports. Enplanement data for fiscal year 2004 are estimates. Appendix A contains a detailed description of each TAF data element.

⁴ In October 2002, DOT began collecting data for all airlines using the T-100 format. This change provides more detail on commuter and regional airlines, who previously reported on Form 298-C.

TAF and National Forecast Totals

Recovery of Commercial Activity

The dual impact of the 2001 recession and terrorist events of September 11, 2001 put the airline industry into a tailspin from which it is just pulling out. The following table shows the year each of the 35 OEP airports is projected to return to and maintain a level of commercial operations above that in 2000. (FAA has designated the OEP airports as those airports most important to the commercial capacity of the national airspace system.)

35 OEP Airports by Year Level of Commercial Operations Returns to 2000 Level			
Airport	Year	Airport	Year
FLL	2001	BWI	2005
LAS	2001	HNL	2005
MEM	2001	IAD	2005
MDW	2002	JFK	2005
MSP	2002	MCO	2005
SLC	2002	TPA	2005
CVG	2003	EWR	2006
LGA	2003	PHX	2006
ORD	2003	LAX	2011
ATL	2004	DFW	2012
CLT	2004	PDX	2012
DCA	2004	SFO	2012
DEN	2004	SEA	2013
DTW	2004	BOS	2014
IAH	2004	MIA	2016
PHL	2004	CLE	2017
SAN	2004	PIT	after 2020
		STL	after 2020

The aviation industry downturn in the early years of this decade has resulted in structural changes that have substantially affected several large hubs. For instance, US Airways and American Airlines have pulled down their respective hubs in Pittsburgh and St. Louis. Twelve of the OEP airports are projected to return to their 2000 level after 2005. In two cases, Pittsburgh and St. Louis, commercial operations are not expected to return to their 2000 level during the forecast period.

National Forecast Trends

Trends at individual airports reflect to varying degrees national aviation trends as well as the dynamics at individual airports. The national forecasts contained in *FAA Aerospace Forecasts Fiscal Years 2005 – 2016 (March 2005)* show aircraft operations at FAA tower airports growing at an average annual rate of 1.9 percent over the 12-year forecast period. Average annual growth rates for this period by user group are as follows: air carrier, 2.3 percent; air taxi/commuter, 3.1 percent; and general aviation, 1.1 percent. The projected average annual rate of increase for enplanements on U.S. mainline air carriers from the national forecast is 3.1 percent over the 12-year forecast period. Regional/commuter enplanements are projected to increase 5.5 percent annually.

Trends by Region

In fiscal year 2003, the FAA served 266 towers and 219 Federal contract towers. California had the most FAA towers with 33,

followed by Texas with 19 and Florida with 18. Regions with the most FAA towers were Southern with 51 and Western Pacific and Great Lakes, with 48 each. Table S-3 presents the number of FAA and Federal contract towers by region and state.

Tables S-6 through S-11 summarize aircraft operations, enplanements, and based aircraft by region from 1999 through 2020. The Southern (25.6 million operations), Great Lakes (20.2 million), and Western Pacific (19.9 million) regions ranked as the top three FAA regions in airport operations in 2003. Operations for all TAF airports totaled 120.6 million. The Northwest Mountain and Western Pacific regions are projected to be the fastest growing FAA regions from 2003 to 2020 in terms of airport operations, increasing 24 percent and 21 percent, respectively.

The Southern region led FAA regions in passengers enplaned with 147.0 million in 2003, followed by the Western Pacific region with 133.4 million passengers. Enplanements in the Eastern region are projected to increase the most in percentage terms increasing 92 percent from 2003 to 2020. Enplanements in the Southern region are projected to increase the next fastest over the forecast period increasing 81 percent.

In 2003, there was a national total of 198.2 thousand based aircraft. Western Pacific (38.4 thousand aircraft), Southern (34.8 thousand), and Great Lakes (33.5 thousand) ranked as the top three FAA regions.

Large, Medium, and Small Hubs

Table S-5 presents passenger enplanements and airport operations by hub size. An air-

port qualifies as a **large** hub with one percent or more of total U.S. passenger enplanements. A **medium** hub airport enplanes from 0.25 to 0.99 percent of total U.S. passenger enplanements while **small** and **non**-hub airports enplane from 0.05 to 0.249 percent and less than 0.05 percent, respectively. Appendix B contains a list of hub airports classified by size (large, medium, small, and non-hub) as well as a list of Federal contract towers.

The 33 large hub airports enplaned 460.5 million passengers in 2003 while the 35 medium and 66 small hub airports enplaned 113.9 and 48.9 million passengers, respectively. The 351 non-hub airports enplaned 17.1 million passengers. Enplanements at large hubs are expected to increase at an annual rate of 3.5 percent over the 2003 to 2020 forecast period. Medium and small hub airports are forecast to increase 3.1 percent and 2.9 percent annually, respectively, during the forecast period.

Operations at large hub airports totaled 14.4 million compared to levels of 7.0 and 8.2 million at medium and small hub airports, respectively. Operations at large hub airports are forecast to increase at an annual rate of 2.5 percent from 2003 to 2020, growing to 22.0 million. Operations at the medium hubs are forecast to rise at an annual rate of 1.8 percent from 2003 to 2020; aircraft operations at small hub airports are forecast to grow only 1.1 percent per year.

Non-hub airports accounted for 33.2 million operations or 53 percent of total operations at FAA and Federal contract towers. General aviation aircraft operations accounted for the majority of operations at these smaller airports.

35 OEP Airports

Table S-1 presents enplanement forecast summaries for the 35 OEP airports. Atlanta was the busiest airport in 2003 (38.6 million enplanements), followed by Chicago O'Hare (32.5 million), Los Angeles (26.6 million), and Dallas/Ft. Worth (24.6 million). Los Angeles and Atlanta are forecast to have the strongest growth in enplanements among the top four airports, increasing at annual rates of 3.6 percent and 3.2 percent, respectively, over the 2003 to 2020 forecast period. Chicago O'Hare is forecast to increase at an annual rate of 2.9 percent and Dallas/Ft. Worth at 2.8 percent. Graph S-1 shows relative enplanements growth over the next 17 years. The five airports with the fastest projected increase are Washington Dulles, Ft. Lauderdale, Philadelphia, Orlando, and John F. Kennedy.

Washington Dulles, Ft. Lauderdale, and John F. Kennedy are projected to make the largest upward movements in ranking of enplanements. Washington Dulles moves up from 28th to 12th, Ft. Lauderdale moves up from 27th to 22nd, and John F. Kennedy moves up from 11th to 6th position. Hub airports with the largest drop in hub rankings are St. Louis

(from 20th to 30th) and LaGuardia (from 18th to 26th).

Table S-2 presents operations forecast summaries for the 35 OEP airports. In 2003, FAA controllers at Chicago O'Hare handled 923,000 landings and takeoffs, a workload slightly higher than Atlanta, which totaled 895,000 operations. The next busiest airports were Dallas/Ft. Worth and Los Angeles with 769,000 and 630,000 airport operations, respectively.

In 2020, Atlanta is projected to have the largest number of operations with 1.4 million followed by Chicago O'Hare with 1.3 million. Washington Dulles is projected to move into 3rd place in 2020 with 1.1 million operations.

Graph S-2 shows that the three airports projected to grow the fastest in operations are Washington Dulles, Houston Intercontinental, and Orlando. Washington Dulles and Houston Intercontinental are expected to move into the list of the top 10 busiest airports; Las Vegas and Cincinnati are expected to drop out of the top 10 ranking.

Table S-1.
Enplanements At The 35 OEP Airports
(In Thousands)

Loc ID	Reg	Airport Name	2003 *					Airport Ranking	
			2003	Percent	2004	2008	2020	2003	2020
ATL	ASO	THE WILLIAM B HARTSFIELD ATLANTA INTL	38,620	6.00	41,015	47,130	65,547	1	1
ORD	AGL	CHICAGO O'HARE INTL	32,488	5.05	35,283	38,760	52,722	2	2
LAX	AWP	LOS ANGELES INTL	26,580	4.13	28,657	33,628	48,302	3	3
DFW	ASW	DALLAS/FORT WORTH INTERNATIONAL	24,609	3.82	27,552	29,202	39,160	4	4
PHX	AWP	PHOENIX SKY HARBOR INTL	18,166	2.82	18,935	22,175	30,992	5	9
DEN	ANM	DENVER INTL	17,528	2.72	20,045	22,817	32,032	6	8
LAS	AWP	MC CARRAN INTL	16,632	2.58	19,179	22,424	32,158	7	7
IAH	ASW	GEORGE BUSH INTERCONTINENTAL	16,202	2.52	16,977	20,070	30,202	8	10
MSP	AGL	MINNEAPOLIS-ST PAUL INTL/WOLD-CHAMBERLAIN/	15,852	2.46	17,233	21,361	33,445	9	5
DTW	AGL	DETROIT METROPOLITAN WAYNE COUNTY	15,617	2.43	16,666	20,183	29,712	10	11
JFK	AEA	JOHN F KENNEDY INTL	15,080	2.34	17,502	22,306	32,201	11	6
EWR	AEA	NEWARK LIBERTY INTL	14,347	2.23	15,534	17,604	25,342	12	16
SFO	AWP	SAN FRANCISCO INTERNATIONAL	14,161	2.20	15,406	18,496	26,615	13	14
MIA	ASO	MIAMI INTL	13,989	2.17	14,572	15,369	20,808	14	18
MCO	ASO	ORLANDO INTL	13,077	2.03	14,736	19,192	28,536	15	13
SEA	ANM	SEATTLE-TACOMA INTL	12,911	2.01	13,769	15,456	20,849	16	17
PHL	AEA	PHILADELPHIA INTL	11,740	1.82	13,054	17,817	26,405	17	15
LGA	AEA	LA GUARDIA	11,264	1.75	11,890	13,225	15,742	18	26
CLT	ASO	CHARLOTTE/DOUGLAS INTL	11,217	1.74	12,248	14,678	19,876	19	20
STL	ACE	LAMBERT-ST LOUIS INTL	11,036	1.71	6,596	7,359	9,947	20	30
BOS	ANE	GENERAL EDWARD LAWRENCE LOGAN INTL	10,952	1.70	12,414	14,658	19,561	21	23
CVG	ASO	CINCINNATI/NORTHERN KENTUCKY INTERNATIONAL	10,433	1.62	10,712	13,193	19,850	22	21
BWI	AEA	BALTIMORE-WASHINGTON INTL	9,385	1.46	10,556	13,135	19,922	23	19
HNL	AWP	HONOLULU INTL	9,148	1.42	9,592	11,483	15,094	24	27
SLC	ANM	SALT LAKE CITY INTL	9,022	1.40	8,828	11,180	16,319	25	24
MDW	AGL	CHICAGO MIDWAY INTL	8,468	1.32	9,257	10,714	16,126	26	25
FLL	ASO	FORT LAUDERDALE/HOLLYWOOD INTL	8,361	1.30	9,505	12,557	19,765	27	22
IAD	AEA	WASHINGTON DULLES INTERNATIONAL	8,030	1.25	9,848	15,861	28,606	28	12
TPA	ASO	TAMPA INTL	7,608	1.18	8,213	10,182	14,183	29	28
SAN	AWP	SAN DIEGO INTL-LINDBERGH FLD	7,519	1.17	7,981	9,437	12,712	30	29
PIT	AEA	PITTSBURGH INTERNATIONAL	7,295	1.13	6,920	6,003	7,364	31	35
DCA	AEA	RONALD REAGAN WASHINGTON NATIONAL	6,576	1.02	7,260	8,336	9,666	32	31
PDX	ANM	PORTLAND INTL	5,932	0.92	6,175	6,956	9,281	33	33
MEM	ASO	MEMPHIS INTL	5,418	0.84	5,280	6,341	9,387	34	32
CLE	AGL	CLEVELAND-HOPKINS INTL	4,977	0.77	5,177	6,119	9,126	35	34
Totals			470,255	73.02	504,586	595,421	847,568		

*Percent of total US enplanements.

**Graph S-1. Enplanements Growth Rates For The 35
OEP Airports - 2003 to 2020**

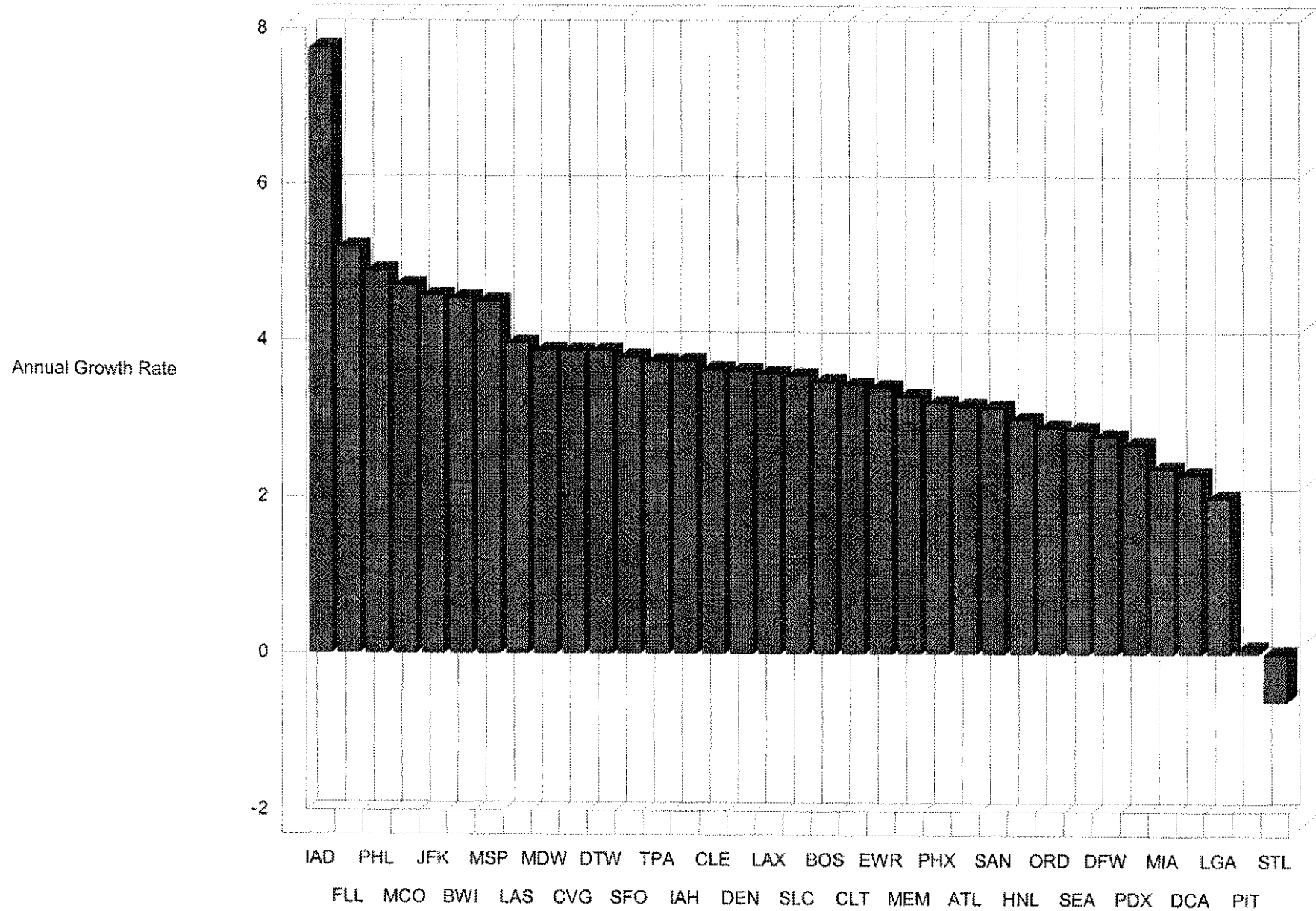


Table S-2.
Airport Operations At The 35 OEP Airports
(In Thousands)

Loc ID	Reg	Airport Name	2003*		2004	2008	2020	Airport Ranking	
			2003	Percent				2003	2020
ORD	AGL	CHICAGO O'HARE INTL	923	0.77	989	1,076	1,304	1	2
ATL	ASO	THE WILLIAM B HARTSFIELD ATLANTA INTL	895	0.74	962	1,131	1,414	2	1
DFW	ASW	DALLAS/FORT WORTH INTERNATIONAL	769	0.64	816	807	987	3	5
LAX	AWP	LOS ANGELES INTL	630	0.52	646	746	987	4	4
PHX	AWP	PHOENIX SKY HARBOR INTL	594	0.49	596	677	853	5	8
DEN	ANM	DENVER INTL	508	0.42	567	644	831	6	10
MSP	AGL	MINNEAPOLIS-ST PAUL INTL/WOLD-CHAMBERLAIN/	506	0.42	533	629	874	7	7
LAS	AWP	MC CARRAN INTL	501	0.42	543	622	796	8	11
CVG	ASO	CINCINNATI/NORTHERN KENTUCKY INTERNATIONAL	496	0.41	519	601	781	9	13
DTW	AGL	DETROIT METROPOLITAN WAYNE COUNTY	491	0.41	514	643	832	10	9
IAH	ASW	GEORGE BUSH INTERCONTINENTAL	469	0.39	513	642	928	11	6
PHL	AEA	PHILADELPHIA INTL	448	0.37	455	599	789	12	12
CLT	ASO	CHARLOTTE/DOUGLAS INTL	438	0.36	458	565	673	13	14
MIA	ASO	MIAMI INTL	422	0.35	397	413	505	14	24
STL	ACE	LAMBERT-ST LOUIS INTL	420	0.35	295	318	375	15	28
EWR	AEA	NEWARK LIBERTY INTL	407	0.34	434	493	624	16	16
MEM	ASO	MEMPHIS INTL	402	0.33	382	444	607	17	17
SLC	ANM	SALT LAKE CITY INTL	400	0.33	421	525	663	18	15
BOS	ANE	GENERAL EDWARD LAWRENCE LOGAN INTL	381	0.32	409	470	556	19	20
LGA	AEA	LA GUARDIA	376	0.31	398	403	403	20	27
IAD	AEA	WASHINGTON DULLES INTERNATIONAL	368	0.31	438	735	1,079	21	3
PIT	AEA	PITTSBURGH INTERNATIONAL	366	0.30	355	297	338	22	33
SEA	ANM	SEATTLE-TACOMA INTL	355	0.30	361	405	517	23	21
SFO	AWP	SAN FRANCISCO INTERNATIONAL	335	0.28	352	405	514	24	22
MDW	AGL	CHICAGO MIDWAY INTL	321	0.27	341	334	369	25	30
HNL	AWP	HONOLULU INTL	310	0.26	307	350	412	26	26
MCO	ASO	ORLANDO INTL	296	0.25	316	429	578	27	18
BWI	AEA	BALTIMORE-WASHINGTON INTL	295	0.25	307	378	506	28	23
JFK	AEA	JOHN F KENNEDY INTL	294	0.24	318	422	566	29	19
FLL	ASO	FORT LAUDERDALE/HOLLYWOOD INTL	283	0.24	306	373	486	30	25
PDX	ANM	PORTLAND INTL	272	0.23	275	310	369	31	29
CLE	AGL	CLEVELAND-HOPKINS INTL	255	0.21	253	283	344	32	32
DCA	AEA	RONALD REAGAN WASHINGTON NATIONAL	250	0.21	268	284	292	33	35
TPA	ASO	TAMPA INTL	232	0.19	238	293	364	34	31
SAN	AWP	SAN DIEGO INTL-LINDBERGH FLD	206	0.17	211	241	299	35	34
Totals			14,931	12.38	15,511	18,004	22,834		

*Percent of total US operations.

**Graph S-2. Airport Operations Growth Rates For The
35 OEP Airports - 2003 to 2020**

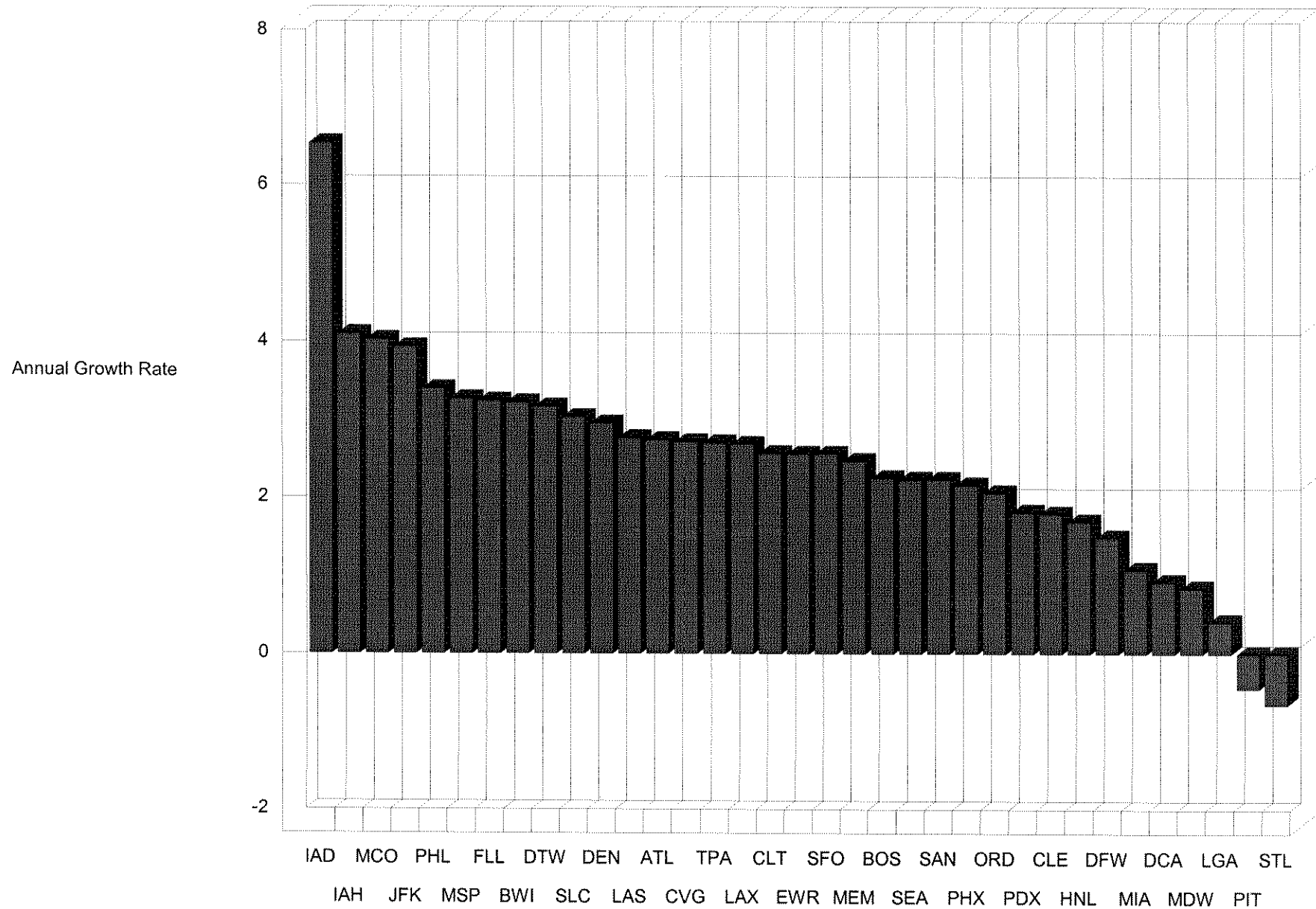


Table S-3.
Air Traffic Control Towers and Contract
Towers by Region and State
As of September 30, 2003

Region/State	FAA Towers	Contract Towers	Region/State	FAA Towers	Contract Towers
Alaska			Northwest Mountain		
Alaska	4	4	Wyoming	1	2
Regional Total	4	4	Regional Total	22	25
Central			Southern		
Iowa	4	1	Alabama	4	3
Kansas	1	8	Florida	18	18
Missouri	5	4	Georgia	5	7
Nebraska	2	1	Kentucky	4	2
Regional Total	12	14	Mississippi	2	4
Eastern			North Carolina	6	5
District of Columbia	2	0	Puerto Rico	1	1
Delaware	1	0	South Carolina	5	2
Maryland	2	3	Tennessee	5	3
New Jersey	5	1	Virgin Islands	1	1
New York	12	4	Regional Total	51	46
Pennsylvania	9	4	Southwest		
Virginia	5	2	Arkansas	2	4
West Virginia	3	4	Louisiana	7	5
Regional Total	39	18	New Mexico	2	3
Great Lakes			Oklahoma	3	6
Illinois	11	7	Texas	19	13
Indiana	6	4	Regional Total	33	31
Michigan	11	4	Western Pacific		
Minnesota	6	1	American Samoa	1	0
North Dakota	3	1	Arizona	7	7
Ohio	7	5	California	33	20
South Dakota	1	1	Guam	0	1
Wisconsin	3	8	Hawaii	3	3
Regional Total	48	31	Nevada	3	2
New England			South Pacific	1	1
Connecticut	1	6	Regional Total	48	34
Massachusetts	3	8	Grand Total		
Maine	2	0		266	219
New Hampshire	1	2			
Rhode Island	1	0			
Vermont	1	0			
Regional Total	9	16			
Northwest Mountain					
Colorado	6	2			
Idaho	2	4			
Montana	3	3			
Oregon	3	6			
Utah	1	1			
Washington	6	7			

Table S-4.
Ranking of Top 100 FAA Towers by Total Enplanements, FY 2003

Rank	City	State	Location Identifier	Enplaned* Passengers	Percent** of Total	Cumulative Enplanements	Cumulative Percentage	Commercial*** Operations	Cumulative Operations
1	ATLANTA	GA	ATL	38,620,644	6.00	38,620,644	6.000	882,243	882,243
2	CHICAGO	IL	ORD	32,488,761	5.05	71,109,405	11.05	899,360	1,781,603
3	LOS ANGELES	CA	LAX	26,580,211	4.13	97,689,616	15.18	612,026	2,393,629
4	DALLAS-FORT WORTH	TX	DFW	24,609,375	3.82	122,298,991	19.00	751,546	3,145,175
5	PHOENIX	AZ	PHX	18,166,185	2.82	140,465,176	21.82	492,299	3,637,474
6	DENVER	CO	DEN	17,528,820	2.72	157,993,996	24.54	495,306	4,132,780
7	LAS VEGAS	NV	LAS	16,632,114	2.58	174,626,110	27.12	401,565	4,534,345
8	HOUSTON	TX	IAH	16,202,251	2.52	190,828,361	29.64	449,169	4,983,514
9	MINNEAPOLIS	MN	MSP	15,852,820	2.46	206,681,181	32.10	472,041	5,455,555
10	DETROIT	MI	DTW	15,617,111	2.43	222,298,292	34.53	471,094	5,926,649
11	NEW YORK	NY	JFK	15,080,725	2.34	237,379,017	36.87	287,293	6,213,942
12	NEWARK	NJ	EWR	14,347,516	2.23	251,726,533	39.10	394,236	6,608,178
13	SAN FRANCISCO	CA	SFO	14,161,072	2.20	265,887,605	41.30	316,861	6,925,039
14	MIAMI	FL	MIA	13,989,709	2.17	279,877,314	43.47	363,368	7,288,407
15	ORLANDO	FL	MCO	13,077,274	2.03	292,954,588	45.50	273,889	7,562,296
16	SEATTLE	WA	SEA	12,911,808	2.01	305,866,396	47.51	352,482	7,914,778
17	PHILADELPHIA	PA	PHL	11,740,483	1.82	317,606,879	49.33	417,517	8,332,295
18	NEW YORK	NY	LGA	11,264,540	1.75	328,871,419	51.08	364,352	8,696,647
19	CHARLOTTE	NC	CLT	11,217,987	1.74	340,089,406	52.82	399,683	9,096,330
20	ST LOUIS	MO	STL	11,036,971	1.71	351,126,377	54.53	394,289	9,490,619
21	BOSTON	MA	BOS	10,952,075	1.70	362,078,452	56.23	361,791	9,852,410
22	COVINGTON/CINCINNATI, OH	KY	CVG	10,433,392	1.62	372,511,844	57.85	479,360	10,331,770
23	BALTIMORE	MD	BWI	9,385,356	1.46	381,897,200	59.31	256,168	10,587,938
24	HONOLULU	HI	HNL	9,148,533	1.42	391,045,733	60.73	213,995	10,801,933
25	SALT LAKE CITY	UT	SLC	9,022,184	1.40	400,067,917	62.13	311,357	11,113,290
26	CHICAGO	IL	MDW	8,468,841	1.32	408,536,758	63.45	265,213	11,378,503
27	FORT LAUDERDALE	FL	FLL	8,361,168	1.30	416,897,926	64.75	221,821	11,600,324
28	WASHINGTON	DC	IAD	8,030,556	1.25	424,928,482	66.00	290,821	11,891,145
29	TAMPA	FL	TPA	7,608,512	1.18	432,536,994	67.18	192,447	12,083,592
30	SAN DIEGO	CA	SAN	7,519,362	1.17	440,056,356	68.35	188,773	12,272,365
31	PITTSBURGH	PA	PIT	7,295,014	1.13	447,351,370	69.48	338,525	12,610,890
32	WASHINGTON	DC	DCA	6,576,442	1.02	453,927,812	70.50	247,302	12,858,192
33	OAKLAND	CA	OAK	6,558,951	1.02	460,486,763	71.52	201,374	13,059,566
34	PORTLAND	OR	PDX	5,932,254	0.92	466,419,017	72.44	226,755	13,286,321
35	MEMPHIS	TN	MEM	5,418,084	0.84	471,837,101	73.28	360,689	13,647,010
36	SAN JOSE	CA	SJC	5,129,750	0.80	476,966,851	74.08	156,910	13,803,920
37	CLEVELAND	OH	CLE	4,977,588	0.77	481,944,439	74.85	233,033	14,036,953
38	KANSAS CITY	MO	MCI	4,857,781	0.75	486,802,220	75.60	164,870	14,201,823
39	SAN JUAN	PR	SJU	4,613,115	0.72	491,415,335	76.32	168,914	14,370,737
40	NEW ORLEANS	LA	MSY	4,600,418	0.71	496,015,753	77.03	125,280	14,496,017

Table S-4.
Ranking of Top 100 FAA Towers by Total Enplanements, FY 2003

Rank	City	State	Location Identifier	Enplaned* Passengers	Percent** of Total	Cumulative Enplanements	Cumulative Percentage	Commercial*** Operations	Cumulative Operations
41	SACRAMENTO	CA	SMF	4,346,654	0.68	500,362,407	77.71	120,680	14,616,697
42	SANTA ANA	CA	SNA	4,149,761	0.64	504,512,168	78.35	105,890	14,722,587
43	NASHVILLE	TN	BNA	3,960,077	0.62	508,472,245	78.97	168,400	14,890,987
44	RALEIGH/DURHAM	NC	RDU	3,899,353	0.61	512,371,598	79.58	163,371	15,054,358
45	HOUSTON	TX	HOU	3,691,827	0.57	516,063,425	80.15	153,626	15,207,984
46	INDIANAPOLIS	IN	IND	3,609,719	0.56	519,673,144	80.71	165,875	15,373,859
47	AUSTIN	TX	AUS	3,165,968	0.49	522,839,112	81.20	114,595	15,488,454
48	SAN ANTONIO	TX	SAT	3,145,216	0.49	525,984,328	81.69	120,173	15,608,627
49	COLUMBUS	OH	CMH	3,135,511	0.49	529,119,839	82.18	172,067	15,780,694
50	WINDSOR LOCKS	CT	BDL	3,083,621	0.48	532,203,460	82.66	106,586	15,887,280
51	ONTARIO	CA	ONT	3,072,773	0.48	535,276,233	83.14	117,248	16,004,528
52	MILWAUKEE	WI	MKE	3,031,278	0.47	538,307,511	83.61	176,964	16,181,492
53	ALBUQUERQUE	NM	ABQ	2,932,082	0.46	541,239,593	84.07	123,110	16,304,602
54	WEST PALM BEACH	FL	PBI	2,913,043	0.45	544,152,636	84.52	89,864	16,394,466
55	DALLAS	TX	DAL	2,784,673	0.43	546,937,309	84.95	126,313	16,520,779
56	FORT MYERS	FL	RSW	2,781,869	0.43	549,719,178	85.38	57,105	16,577,884
57	KAHULUI	HI	OGG	2,587,621	0.40	552,306,799	85.78	126,655	16,704,539
58	PROVIDENCE	RI	PVD	2,585,642	0.40	554,892,441	86.18	88,260	16,792,799
59	JACKSONVILLE	FL	JAX	2,393,120	0.37	557,285,561	86.55	80,439	16,873,238
60	BURBANK	CA	BUR	2,359,930	0.37	559,645,491	86.92	85,825	16,959,063
61	RENO	NV	RNO	2,207,965	0.34	561,853,456	87.26	73,945	17,033,008
62	BUFFALO	NY	BUF	2,027,971	0.31	563,881,427	87.57	89,370	17,122,378
63	ANCHORAGE	AK	ANC	1,967,349	0.31	566,848,776	87.88	198,694	17,321,072
64	OMAHA	NE	OMA	1,778,176	0.28	567,626,952	88.16	82,109	17,403,181
65	MANCHESTER	NH	MHT	1,730,459	0.27	569,357,411	88.43	66,668	17,469,849
66	NORFOLK	VA	ORF	1,702,773	0.26	571,060,184	88.69	75,412	17,545,261
67	TUCSON	AZ	TUS	1,699,588	0.26	572,759,772	88.95	53,644	17,598,905
68	LOUISVILLE	KY	SDF	1,657,134	0.26	574,416,906	89.21	150,474	17,749,379
69	OKLAHOMA CITY	OK	OKC	1,579,158	0.25	575,996,064	89.46	49,455	17,798,834
70	EL PASO	TX	ELP	1,417,916	0.22	577,413,980	89.68	62,644	17,861,478
71	ALBANY	NY	ALB	1,409,961	0.22	578,823,941	89.90	92,147	17,953,625
72	BIRMINGHAM	AL	BHM	1,379,908	0.21	580,203,849	90.11	73,345	18,026,970
73	BOISE	ID	BOI	1,372,099	0.21	581,575,948	90.32	73,111	18,100,081
74	SPOKANE	WA	GEG	1,362,587	0.21	582,938,535	90.53	64,123	18,164,204
75	TULSA	OK	TUL	1,356,175	0.21	584,294,710	90.74	53,302	18,217,506
76	LONG BEACH	CA	LGB	1,352,491	0.21	585,647,201	90.95	35,203	18,252,709
77	GREENSBORO	NC	GSO	1,268,920	0.20	586,916,121	91.15	68,217	18,320,926
78	DAYTON	OH	DAY	1,268,749	0.20	588,184,870	91.35	84,422	18,405,348
79	AGANA	GU	GUM	1,228,828	0.19	589,413,698	91.54	23,471	18,428,819
80	ROCHESTER	NY	ROC	1,221,840	0.19	590,635,538	91.73	69,751	18,498,570

Table S-4.
Ranking of Top 100 FAA Towers by Total Enplanements, FY 2003

Rank	City	State	Location Identifier	Enplaned* Passengers	Percent** of Total	Cumulative Enplanements	Cumulative Percentage	Commercial*** Operations	Cumulative Operations
81	LIHUE	HI	LIH	1,212,659	0.19	591,848,197	91.92	75,521	18,574,091
82	KAILUA/KONA	HI	KOA	1,196,514	0.19	593,044,711	92.11	37,809	18,611,900
83	RICHMOND	VA	RIC	1,185,969	0.18	594,230,680	92.29	80,013	18,691,913
84	LITTLE ROCK	AR	LIT	1,066,120	0.17	595,296,800	92.46	59,852	18,751,765
85	COLORADO SPRINGS	CO	COS	1,007,800	0.16	596,304,600	92.62	49,748	18,801,513
86	GRAND RAPIDS	MI	GRR	979,205	0.15	597,283,805	92.77	58,319	18,859,832
87	ISLIP	NY	ISP	949,071	0.15	598,232,876	92.92	37,409	18,897,241
88	SYRACUSE	NY	SYR	934,896	0.15	599,167,772	93.07	63,945	18,961,186
89	DES MOINES	IA	DSM	882,916	0.14	600,050,688	93.21	66,886	19,028,072
90	SAVANNAH	GA	SAV	813,823	0.13	600,864,511	93.34	34,988	19,063,060
91	MADISON	WI	MSN	799,204	0.12	601,663,715	93.46	43,014	19,106,074
92	CHARLESTON	SC	CHS	792,020	0.12	602,455,735	93.58	47,260	19,153,334
93	KNOXVILLE	TN	TYS	685,375	0.11	603,141,110	93.69	58,708	19,212,042
94	WICHITA	KS	ICT	683,424	0.11	603,824,534	93.80	56,050	19,268,092
95	GREER	SC	GSP	672,544	0.10	604,497,078	93.90	48,992	19,317,084
96	PENSACOLA	FL	PNS	671,105	0.10	605,168,183	94.00	29,557	19,346,641
97	HARRISBURG	PA	MDT	652,123	0.10	605,820,306	94.10	47,533	19,394,174
98	MYRTLE BEACH	SC	MYR	618,822	0.10	606,439,128	94.20	23,311	19,417,485
99	PORTLAND	ME	PWM	614,308	0.10	607,053,436	94.30	42,826	19,460,311
100	PALM SPRINGS	CA	PSP	607,093	0.09	607,660,529	94.39	33,649	19,493,960
101 thru 485				32,793,284	5.093	640,453,813	99.48	4,760,371	24,254,331

*Enplanements include air carrier, commuter and international.

**Percent is of national total enplanements.

***Operations include itinerant air carrier and air taxi only.

Table S-5.
Summary of Enplanements and
Airport Operations at FAA Towers and Contract Towers

Enplanements at Towered Airports

	Count	2003	2010	2020	Annual Compound Growth Rate	
					2003-2010	2010-2020
Large Hubs	33	460,486,763	623,735,048	832,432,922	4.43	2.93
Medium Hubs	35	113,930,143	146,148,406	191,273,310	3.62	2.73
Small Hubs	66	48,914,690	63,050,236	80,139,022	3.69	2.43
Non Hub Towers	351	17,122,217	19,602,930	23,380,002	1.95	1.78
Total	485	640,453,813	852,536,620	1,127,225,256	4.17	2.83

Operations at Towered Airports

	Count	2003	2010	2020	Annual Compound Growth Rate	
					2003-2010	2010-2020
Large Hubs	33	14,356,535	17,766,287	22,010,896	3.09	2.17
Medium Hubs	35	6,972,068	7,846,402	9,413,334	1.70	1.84
Small Hubs	66	8,217,052	8,788,618	9,838,151	0.97	1.13
Non Hub Towers	351	33,230,486	35,369,207	40,008,626	0.90	1.24
Total	485	62,776,141	69,770,514	81,271,007	1.52	1.54

**Table S-6.
Commercial Airport Operations Summary by Region***

Fiscal Year	Alaska (AAL)	Central (ACE)	Eastern (AEA)	Great Lakes (AGL)	New England (ANE)	Northwest Mountain (ANM)	Southern (ASO)	Southwest (ASW)	Western Pacific (AWP)	National Total
Historical										
1999	1,164,326	1,168,977	4,435,180	4,608,519	1,292,662	2,650,427	5,736,298	3,121,684	4,769,427	28,947,500
2000	1,227,283	1,162,891	4,573,439	4,703,765	1,332,178	2,722,815	5,972,742	3,189,549	4,830,333	29,714,995
2001	1,198,125	1,162,700	4,550,127	4,644,398	1,345,059	2,695,142	5,845,025	3,109,372	4,816,273	29,366,221
2002	1,183,467	1,118,065	4,185,118	4,511,247	1,200,702	2,591,803	5,657,738	2,917,842	4,437,988	27,803,970
2003	1,218,048	1,063,029	4,151,981	4,587,423	1,152,840	2,614,659	5,738,842	3,082,980	4,494,839	28,104,641
Forecast										
2004	1,238,475	940,739	4,357,466	4,751,927	1,158,742	2,716,752	5,984,043	3,206,832	4,654,567	29,009,543
2005	1,250,756	952,726	4,665,957	4,795,124	1,201,272	2,816,972	6,277,575	3,173,594	4,752,201	29,886,177
2006	1,263,042	967,329	4,774,608	4,920,460	1,222,095	2,878,298	6,436,008	3,263,515	4,888,095	30,613,450
2007	1,273,503	980,782	4,875,414	5,031,639	1,241,140	2,937,899	6,568,828	3,334,871	5,004,986	31,249,062
2008	1,284,217	994,400	4,977,668	5,127,878	1,260,435	2,997,884	6,701,638	3,400,872	5,117,993	31,862,985
2009	1,295,189	1,008,181	5,081,032	5,224,328	1,279,985	3,058,242	6,837,522	3,468,903	5,223,329	32,476,711
2010	1,306,420	1,022,133	5,186,523	5,318,058	1,299,793	3,118,997	6,975,969	3,565,358	5,328,833	33,122,084
2011	1,317,922	1,036,257	5,291,328	5,409,866	1,319,867	3,180,147	7,109,522	3,629,927	5,438,845	33,733,681
2012	1,329,704	1,050,556	5,396,915	5,502,536	1,340,216	3,241,700	7,245,646	3,696,232	5,550,860	34,354,365
2013	1,341,770	1,065,037	5,503,303	5,600,107	1,360,842	3,303,675	7,385,361	3,764,319	5,664,768	34,989,182
2014	1,354,129	1,079,700	5,610,518	5,696,051	1,381,754	3,366,070	7,527,240	3,834,256	5,781,135	35,630,853
2015	1,366,795	1,094,550	5,718,571	5,791,017	1,402,959	3,428,902	7,671,884	3,906,098	5,899,028	36,279,804
2016	1,379,770	1,109,593	5,827,491	5,889,070	1,424,464	3,492,183	7,819,421	3,979,913	6,019,389	36,941,294
2017	1,393,067	1,124,833	5,937,299	5,988,564	1,446,278	3,555,919	7,969,838	4,055,761	6,141,896	37,613,455
2018	1,406,699	1,140,270	6,048,019	6,089,304	1,468,405	3,620,122	8,123,397	4,133,706	6,265,245	38,295,167
2019	1,420,665	1,155,909	6,159,662	6,190,380	1,490,853	3,684,802	8,279,525	4,213,730	6,390,484	38,986,010
2020	1,434,991	1,171,761	6,272,276	6,293,792	1,513,637	3,749,993	8,439,010	4,296,196	6,519,798	39,691,456

*Includes air carrier and commuter/air taxi operations at all airports.

**Table S-7.
Itinerant Airport Operations Summary by Region***

Fiscal Year	Alaska (AAL)	Central (ACE)	Eastern (AEA)	Great Lakes (AGL)	New England (ANE)	Northwest Mountain (ANM)	Southern (ASO)	Southwest (ASW)	Western Pacific (AWP)	National Total
Historical										
1999	2,021,842	3,248,498	9,719,369	12,094,809	3,460,859	7,323,202	17,029,494	8,993,676	13,447,676	77,339,425
2000	2,082,226	3,329,544	9,903,754	12,263,694	3,465,267	7,612,623	17,469,119	9,237,564	13,451,230	78,815,021
2001	2,048,854	3,208,827	9,862,032	12,008,380	3,426,160	7,593,530	17,503,459	9,096,717	12,974,758	77,722,717
2002	2,006,162	3,179,612	9,396,374	12,007,395	3,264,908	7,463,698	17,223,471	8,950,402	12,594,482	76,086,504
2003	2,043,906	3,064,491	9,078,297	11,822,828	3,128,330	7,465,079	16,939,990	9,110,185	12,516,699	75,169,805
Forecast										
2004	2,053,856	2,937,813	9,306,835	11,897,553	3,160,104	7,513,372	17,050,213	9,143,487	12,528,378	75,591,611
2005	2,070,142	2,959,180	9,643,113	11,981,283	3,214,951	7,674,154	17,436,022	9,163,808	12,703,852	76,846,505
2006	2,086,432	2,982,338	9,779,178	12,146,797	3,245,756	7,796,087	17,680,464	9,307,107	12,917,671	77,941,830
2007	2,100,500	3,003,674	9,905,456	12,295,262	3,274,067	7,913,371	17,892,261	9,428,775	13,104,220	78,917,586
2008	2,114,876	3,025,279	10,033,453	12,429,295	3,302,736	8,031,436	18,105,056	9,545,266	13,288,143	79,875,560
2009	2,129,570	3,047,159	10,162,830	12,564,023	3,331,768	8,150,218	18,321,954	9,664,343	13,465,692	80,837,557
2010	2,144,580	3,069,315	10,294,603	12,696,554	3,361,173	8,269,768	18,542,465	9,812,358	13,644,718	81,835,534
2011	2,159,926	3,091,757	10,425,961	12,827,674	3,390,955	8,390,057	18,759,147	9,929,026	13,829,598	82,804,101
2012	2,175,610	3,114,484	10,558,386	12,960,191	3,421,128	8,511,143	18,979,483	10,047,989	14,017,852	83,786,266
2013	2,191,639	3,137,506	10,691,898	13,098,146	3,451,695	8,633,034	19,204,512	10,169,294	14,209,405	84,787,129
2014	2,208,027	3,160,830	10,826,516	13,235,008	3,482,667	8,755,702	19,432,830	10,293,009	14,404,839	85,799,428
2015	2,224,785	3,184,454	10,962,272	13,371,463	3,514,050	8,879,210	19,665,052	10,419,223	14,603,265	86,823,774
2016	2,241,918	3,208,396	11,099,188	13,511,577	3,545,859	9,003,562	19,901,343	10,548,020	14,805,642	87,865,505
2017	2,259,437	3,232,653	11,237,294	13,653,712	3,578,098	9,128,785	20,141,691	10,679,451	15,011,698	88,922,819
2018	2,277,359	3,257,231	11,376,621	13,797,694	3,610,774	9,254,884	20,386,391	10,813,606	15,220,142	89,994,702
2019	2,295,685	3,282,133	11,517,177	13,942,612	3,643,901	9,381,875	20,634,885	10,950,474	15,432,061	91,080,803
2020	2,314,440	3,307,378	11,659,038	14,090,498	3,677,494	9,509,851	20,887,995	11,090,457	15,649,681	92,186,832

*Includes itinerant air carrier, commuter/air taxi, general aviation and military operations at all airports.

**Table S-8.
Total Airport Operations Summary by Region***

Fiscal Year	Alaska (AAL)	Central (ACE)	Eastern (AEA)	Great Lakes (AGL)	New England (ANE)	Northwest Mountain (ANM)	Southern (ASO)	Southwest (ASW)	Western Pacific (AWP)	National Total
Historical										
1999	2,641,014	4,861,111	15,481,642	20,619,378	5,577,401	11,300,437	25,725,298	15,512,329	21,194,787	122,913,397
2000	2,689,920	5,078,781	15,789,640	20,885,871	5,591,858	11,733,906	26,277,336	16,240,934	21,440,459	125,728,705
2001	2,634,461	4,940,851	15,896,411	20,539,286	5,569,577	11,845,332	26,444,151	15,988,231	20,730,737	124,589,037
2002	2,574,376	4,895,124	15,403,391	20,584,437	5,370,906	11,731,944	26,188,900	15,664,938	20,324,061	122,738,077
2003	2,648,518	4,699,689	14,945,162	20,208,933	5,125,388	11,737,963	25,583,764	15,682,516	19,918,742	120,550,675
Forecast										
2004	2,630,699	4,528,047	15,166,891	20,060,993	5,187,562	11,724,180	25,546,420	15,642,395	19,871,563	120,358,750
2005	2,648,152	4,555,225	15,530,793	20,183,296	5,256,519	11,940,516	25,986,093	15,719,856	20,110,241	121,930,691
2006	2,665,608	4,583,067	15,690,586	20,386,119	5,295,975	12,118,009	26,283,350	15,923,976	20,387,309	123,333,999
2007	2,680,724	4,608,724	15,839,310	20,569,113	5,332,273	12,281,901	26,544,105	16,101,595	20,630,231	124,587,976
2008	2,696,162	4,634,713	15,989,959	20,738,089	5,369,030	12,446,884	26,806,422	16,270,863	20,871,553	125,823,675
2009	2,711,937	4,661,036	16,142,184	20,908,164	5,406,256	12,612,852	27,073,403	16,443,136	21,107,532	127,066,500
2010	2,728,047	4,687,693	16,297,009	21,076,461	5,443,957	12,779,861	27,344,571	16,644,829	21,346,045	128,348,473
2011	2,744,511	4,714,693	16,451,626	21,243,756	5,482,148	12,947,882	27,612,485	16,815,644	21,591,490	129,604,235
2012	2,761,329	4,742,045	16,607,522	21,412,885	5,520,832	13,116,990	27,884,638	16,989,242	21,841,418	130,876,899
2013	2,778,512	4,769,755	16,764,715	21,587,892	5,560,022	13,287,195	28,162,097	17,165,572	22,095,763	132,171,523
2014	2,796,074	4,797,628	16,923,227	21,762,236	5,599,730	13,458,442	28,443,456	17,344,805	22,355,148	133,480,946
2015	2,814,025	4,826,267	17,083,100	21,936,623	5,639,959	13,630,843	28,729,330	17,527,048	22,618,706	134,805,901
2016	2,832,370	4,855,087	17,244,359	22,115,129	5,680,729	13,804,389	29,019,905	17,712,393	22,887,419	136,151,780
2017	2,851,121	4,884,294	17,407,039	22,296,113	5,722,047	13,979,114	29,315,188	17,900,909	23,161,043	137,516,868
2018	2,870,294	4,913,883	17,571,168	22,479,423	5,763,922	14,155,032	29,615,462	18,092,689	23,438,308	138,900,181
2019	2,889,894	4,943,867	17,736,761	22,664,142	5,806,364	14,332,148	29,920,208	18,287,732	23,720,344	140,301,460
2020	2,909,945	4,974,262	17,903,909	22,852,322	5,849,397	14,510,606	30,230,245	18,486,471	24,009,397	141,726,554

*Includes all itinerant and local operations at all airports.

**Table S-9.
Instrument Operations Summary by Region***

Fiscal Year	Alaska (AAL)	Central (ACE)	Eastern (AEA)	Great Lakes (AGL)	New England (ANE)	Northwest Mountain (ANM)	Southern (ASO)	Southwest (ASW)	Western Pacific (AWP)	National Total
Historical										
1999	417,664	2,233,479	7,544,359	8,190,647	1,726,520	3,417,952	10,255,326	6,766,860	7,220,870	47,773,677
2000	478,024	2,211,979	7,614,452	8,281,516	1,737,084	3,591,511	10,488,005	6,816,160	7,493,339	48,712,070
2001	488,404	2,061,827	7,482,135	7,813,822	1,687,479	3,510,135	10,825,295	6,446,590	7,465,665	47,781,352
2002	485,302	2,107,992	7,224,297	7,665,086	1,623,639	3,438,766	11,338,562	6,438,282	7,469,384	47,791,310
2003	480,250	1,955,272	7,618,277	7,497,416	1,468,332	3,434,379	11,037,305	6,232,965	7,270,023	46,994,239
Forecast										
2004	490,218	1,999,461	8,131,035	7,676,882	1,501,339	3,527,769	11,255,537	6,366,274	8,457,820	49,406,335
2005	500,448	2,038,681	8,317,294	7,852,812	1,536,214	3,615,642	11,611,959	6,493,457	8,648,032	50,614,539
2006	509,517	2,077,939	8,478,375	8,019,333	1,571,110	3,703,517	11,863,442	6,621,542	8,839,949	51,684,724
2007	518,273	2,117,193	8,636,345	8,184,058	1,600,871	3,791,339	12,098,511	6,749,418	9,033,550	52,729,558
2008	527,088	2,156,451	8,797,742	8,350,204	1,630,706	3,879,200	12,333,465	6,877,558	9,228,895	53,781,309
2009	535,874	2,195,700	8,961,857	8,517,026	1,660,611	3,967,052	12,571,555	7,005,872	9,425,990	54,841,537
2010	544,847	2,234,959	9,128,454	8,684,236	1,690,601	4,054,924	12,810,484	7,134,221	9,624,908	55,907,634
2011	554,007	2,274,211	9,295,733	8,852,471	1,720,663	4,142,791	13,050,139	7,262,651	9,825,685	56,978,351
2012	563,359	2,313,478	9,464,627	9,021,412	1,750,818	4,230,700	13,291,765	7,391,178	10,028,391	58,055,728
2013	572,949	2,352,719	9,634,792	9,190,789	1,781,034	4,318,559	13,535,441	7,519,600	10,232,998	59,138,881
2014	582,993	2,391,974	9,806,337	9,361,011	1,811,344	4,406,451	13,779,535	7,647,992	10,439,637	60,227,274
2015	593,236	2,431,231	9,979,574	9,531,921	1,841,741	4,494,344	14,025,370	7,776,459	10,648,319	61,322,195
2016	603,693	2,470,489	10,152,364	9,702,077	1,872,229	4,582,229	14,270,015	7,904,618	10,859,122	62,416,836
2017	614,361	2,509,737	10,324,590	9,871,343	1,902,791	4,670,070	14,513,105	8,032,422	11,072,052	63,510,471
2018	625,249	2,548,994	10,496,212	10,039,736	1,933,456	4,757,903	14,754,597	8,159,915	11,287,200	64,603,262
2019	636,365	2,588,249	10,667,178	10,207,167	1,964,206	4,845,708	14,994,071	8,287,046	11,504,607	65,694,597
2020	647,718	2,627,531	10,837,522	10,373,698	1,995,070	4,933,548	15,232,140	8,413,894	11,724,396	66,785,517

*Includes only TRACON and radar tower facilities.

**Table S-10.
Enplanements Summary by Region***

Fiscal Year	Alaska (AAL)	Central (ACE)	Eastern (AEA)	Great Lakes (AGL)	New England (ANE)	Northwest Mountain (ANM)	Southern (ASO)	Southwest (ASW)	Western Pacific (AWP)	National Total
Historical										
1999	3,747,394	25,382,467	103,562,376	98,659,228	21,826,255	56,522,985	149,195,553	77,056,344	139,613,489	675,566,091
2000	3,761,420	26,070,754	108,572,193	102,423,041	23,526,668	57,090,075	156,222,430	79,874,186	147,357,030	704,897,797
2001	3,788,176	24,715,286	108,214,627	99,087,202	22,967,120	56,349,923	155,323,730	78,169,210	144,571,120	693,186,394
2002	3,405,390	22,100,229	95,439,016	92,781,754	20,009,536	51,984,769	142,220,317	70,864,774	128,869,936	627,675,721
2003	3,780,770	20,510,629	97,479,723	97,034,504	20,185,801	53,277,763	147,036,771	71,204,728	133,406,052	643,916,741
Forecast										
2004	3,296,190	16,103,929	107,088,523	104,122,527	21,821,875	56,681,284	158,730,643	75,679,470	142,642,130	686,166,571
2005	3,397,490	16,500,079	116,760,219	107,089,321	23,287,229	59,023,302	169,557,959	76,320,491	148,957,464	720,893,554
2006	3,498,786	16,996,258	121,535,139	111,703,826	24,142,239	61,129,484	175,757,992	79,240,176	155,575,134	749,579,034
2007	3,600,068	17,492,428	126,110,148	116,140,500	24,997,241	63,235,716	181,553,901	81,884,433	161,418,718	776,433,153
2008	3,701,393	17,988,609	130,760,098	120,114,273	25,852,254	65,341,984	187,424,005	84,329,588	167,114,446	802,626,650
2009	3,802,709	18,484,790	135,382,339	124,159,845	26,707,263	67,448,245	193,429,055	86,834,413	172,462,368	828,711,027
2010	3,904,034	18,980,973	140,055,078	128,084,697	27,562,277	69,554,516	199,557,129	90,348,025	177,770,494	855,817,223
2011	4,005,362	19,477,155	144,693,001	132,062,504	28,417,287	71,660,772	205,589,544	92,724,945	183,109,981	881,740,551
2012	4,106,682	19,973,338	149,353,285	136,137,860	29,272,298	73,767,044	211,741,990	95,152,515	188,542,358	908,047,370
2013	4,208,015	20,469,518	154,036,644	140,372,597	30,127,311	75,873,313	218,025,456	97,632,698	194,072,923	934,818,475
2014	4,309,323	20,965,698	158,743,757	144,639,925	30,982,320	77,979,568	224,432,368	100,167,508	199,655,716	961,876,183
2015	4,410,640	21,461,880	163,475,410	148,838,404	31,837,331	80,085,832	230,963,408	102,759,096	205,244,245	989,076,246
2016	4,511,971	21,958,063	168,232,369	153,106,634	32,692,343	82,192,096	237,633,257	105,409,682	210,973,859	1,016,710,274
2017	4,613,293	22,454,243	173,015,441	157,446,260	33,547,353	84,298,355	244,443,167	108,121,553	216,825,954	1,044,765,619
2018	4,714,612	22,950,426	177,825,437	161,812,127	34,402,365	86,404,627	251,389,810	110,873,199	222,710,470	1,073,083,073
2019	4,815,934	23,446,605	182,663,220	166,194,281	35,257,375	88,510,888	258,485,425	113,690,358	228,708,668	1,101,772,754
2020	4,917,292	23,942,800	187,529,715	170,717,280	36,112,398	90,617,191	265,738,928	116,575,678	234,828,006	1,130,979,288

*Includes both tower and non-tower airports.

**Table S-11.
Based Aircraft Summary by Region***

Fiscal Year	Alaska (AAL)	Central (ACE)	Eastern (AEA)	Great Lakes (AGL)	New England (ANE)	Northwest Mountain (ANM)	Southern (ASO)	Southwest (ASW)	Western Pacific (AWP)	National Total
Historical										
1999	5,671	9,873	20,001	30,787	6,776	20,570	32,228	21,442	36,610	183,958
2000	5,694	10,420	20,253	31,517	6,951	20,972	32,646	22,251	37,223	187,927
2001	5,665	10,545	21,750	32,377	7,049	22,076	34,263	23,813	38,008	195,546
2002	5,644	10,774	20,718	33,075	7,232	22,496	34,547	24,340	38,055	196,881
2003	5,649	10,739	20,718	33,466	7,275	22,655	34,846	24,518	38,366	198,232
Forecast										
2004	5,663	10,823	20,857	33,803	7,341	22,950	35,252	24,833	38,733	200,255
2005	5,678	10,903	20,985	34,064	7,410	23,258	35,687	25,183	39,109	202,277
2006	5,687	10,977	21,106	34,332	7,475	23,567	36,093	25,533	39,479	204,249
2007	5,699	11,052	21,206	34,599	7,541	23,861	36,503	25,873	39,856	206,190
2008	5,714	11,159	21,376	34,910	7,615	24,208	36,983	26,273	40,264	208,502
2009	5,726	11,205	21,448	35,131	7,672	24,468	37,351	26,557	40,617	210,175
2010	5,738	11,286	21,592	35,402	7,745	24,780	37,774	26,913	40,999	212,229
2011	5,754	11,424	21,770	35,780	7,825	25,177	38,299	27,357	41,424	214,810
2012	5,764	11,457	21,844	35,981	7,883	25,428	38,647	27,600	41,761	216,365
2013	5,776	11,524	21,970	36,237	7,951	25,719	39,053	27,942	42,138	218,310
2014	5,789	11,634	22,124	36,552	8,026	26,065	39,530	28,332	42,545	220,597
2015	5,803	11,676	22,218	36,769	8,089	26,320	39,900	28,623	42,900	222,298
2016	5,815	11,767	22,337	37,052	8,159	26,636	40,332	28,984	43,293	224,375
2017	5,826	11,851	22,463	37,330	8,228	26,944	40,756	29,339	43,672	226,409
2018	5,839	11,920	22,580	37,589	8,295	27,224	41,175	29,671	44,054	228,347
2019	5,851	11,991	22,694	37,845	8,363	27,502	41,579	30,005	44,421	230,251
2020	5,875	12,203	22,986	38,377	8,473	28,074	42,280	30,611	44,961	233,840

*Includes both tower and non-tower airports.

Appendix A

Description of Activity Measures

Air Carrier Enplanements

These data summarize domestic enplaned passengers (originations and connections) of U.S. commercial air carriers and international enplanements for both U.S. and foreign flag carriers submitted to the U.S. Department of Transportation (DOT), Bureau of Transportation Statistics (BTS) on T-100 reports. Estimates include both scheduled and non-scheduled enplaned passengers.

Commuter Enplanements

Starting in FY 2003, FAA includes in the commuter category enplanements for those airlines whose primary function is to feed mainline carriers, regardless of aircraft size. As of October 2002, all scheduled and non-scheduled commuter operations using aircraft with 10 or more seats must report on T-100.

Historic enplanement data includes originating passengers on scheduled commuter or regional carriers as reported on DOT Form 41 and 298-C; where possible, adjustments were made to include connecting passengers. Historically, Form 298-C included carriers operating at least five scheduled round trips per week whose entire fleet consists of aircraft having 60 seats or less.

Aircraft Operations

FAA air traffic controllers count landings and takeoffs at FAA towered airports. Control-

lers employed by an FAA contractor count operations at FAA contract towers. The reported FAA and contract tower operation counts are evaluated for consistency and adjustments are made to the distribution by user category if needed. At non-FAA facilities, operations counts represent an estimate.

Air carrier operations represent either takeoffs or landings of commercial aircraft with seating capacity of more than 60 seats.

Commuter operations include takeoffs and landings by aircraft with 60 or fewer seats conducting scheduled commercial flights. Air taxi operations include takeoffs and landings by aircraft with 60 or fewer seats conducted on non-scheduled or for-hire flights.

General aviation operations represent all civil aviation aircraft takeoffs and landings not classified as commercial or military. Military operations represent takeoffs and landings by military aircraft. GA and military operations are further subdivided into itinerant or local flights.

Local Operations

Aircraft operating in the traffic pattern or within sight of the tower, or aircraft known to be departing or arriving from flight in local practice areas, or aircraft executing practice instrument approaches at the airport.

Itinerant Operations

FAA reports all aircraft operations other than local operations as itinerant. Essentially, these data represent takeoffs and landings of aircraft going from one airport to another.

Instrument Operations

These data include arrivals, departures, and overflights conducted by an FAA approach control facility for aircraft with an Instrument Flight Rule (IFR) flight plan or special Visual Flight Rule procedures. They also contain operations where a terminal control facility provides IFR aircraft separation. The FAA

classifies these operations into the following three types.

Primary Instrument Operations

These data consist of aircraft arrivals and departures at a primary airport, normally the airport with the approach control facility.

Secondary Instrument Operations

These data show arrivals and departures at secondary airports.

Overflights

These data include operations of aircraft in transit through the approach control facility airspace.

Table B-1.
List of Large Hub Towers

Location Identifier	Region	Airport Name	City, State
ATL	ASO	THE WILLIAM B HARTSFIELD ATLANTA INTL	ATLANTA, GA
BOS	ANE	GENERAL EDWARD LAWRENCE LOGAN INTL	BOSTON, MA
BWI	AEA	BALTIMORE-WASHINGTON INTL	BALTIMORE, MD
CLT	ASO	CHARLOTTE/DOUGLAS INTL	CHARLOTTE, NC
CVG	ASO	CINCINNATI/NORTHERN KENTUCKY INTERNATIONAL	COVINGTON/CINCINNATI, OH, KY
DCA	AEA	RONALD REAGAN WASHINGTON NATIONAL	WASHINGTON, DC
DEN	ANM	DENVER INTL	DENVER, CO
DFW	ASW	DALLAS/FORT WORTH INTERNATIONAL	DALLAS-FORT WORTH, TX
DTW	AGL	DETROIT METROPOLITAN WAYNE COUNTY	DETROIT, MI
EWR	AEA	NEWARK LIBERTY INTL	NEWARK, NJ
FLL	ASO	FORT LAUDERDALE/HOLLYWOOD INTL	FORT LAUDERDALE, FL
HNL	AWP	HONOLULU INTL	HONOLULU, HI
IAD	AEA	WASHINGTON DULLES INTERNATIONAL	WASHINGTON, DC
IAH	ASW	GEORGE BUSH INTERCONTINENTAL ARPT/HOUSTON	HOUSTON, TX
JFK	AEA	JOHN F KENNEDY INTL	NEW YORK, NY
LAS	AWP	MC CARRAN INTL	LAS VEGAS, NV
LAX	AWP	LOS ANGELES INTL	LOS ANGELES, CA
LGA	AEA	LA GUARDIA	NEW YORK, NY
MCO	ASO	ORLANDO INTL	ORLANDO, FL
MDW	AGL	CHICAGO MIDWAY INTL	CHICAGO, IL
MIA	ASO	MIAMI INTL	MIAMI, FL
MSP	AGL	MINNEAPOLIS-ST PAUL INTL/WOLD-CHAMBERLAIN/	MINNEAPOLIS, MN
OAK	AWP	METROPOLITAN OAKLAND INTL	OAKLAND, CA
ORD	AGL	CHICAGO O'HARE INTL	CHICAGO, IL
PHL	AEA	PHILADELPHIA INTL	PHILADELPHIA, PA
PHX	AWP	PHOENIX SKY HARBOR INTL	PHOENIX, AZ
PIT	AEA	PITTSBURGH INTERNATIONAL	PITTSBURGH, PA
SAN	AWP	SAN DIEGO INTL-LINDBERGH FLD	SAN DIEGO, CA
SEA	ANM	SEATTLE-TACOMA INTL	SEATTLE, WA
SFO	AWP	SAN FRANCISCO INTERNATIONAL	SAN FRANCISCO, CA
SLC	ANM	SALT LAKE CITY INTL	SALT LAKE CITY, UT
STL	ACE	LAMBERT-ST LOUIS INTL	ST LOUIS, MO
TPA	ASO	TAMPA INTL	TAMPA, FL

Listed 33 Airports.

Table B-2.
List of Medium Hub Towers

Location		Airport Name	City, State
Identifier	Region		
ABQ	ASW	ALBUQUERQUE INTL SUNPORT	ALBUQUERQUE, NM
ANC	AAL	TED STEVENS ANCHORAGE INTL	ANCHORAGE, AK
AUS	ASW	AUSTIN-BERGSTROM INTL	AUSTIN, TX
BDL	ANE	BRADLEY INTL	WINDSOR LOCKS, CT
BNA	ASO	NASHVILLE INTL	NASHVILLE, TN
BUF	AEA	BUFFALO NIAGARA INTL	BUFFALO, NY
BUR	AWP	BURBANK-GLENDALE-PASADENA	BURBANK, CA
CLE	AGL	CLEVELAND-HOPKINS INTL	CLEVELAND, OH
CMH	AGL	PORT COLUMBUS INTL	COLUMBUS, OH
DAL	ASW	DALLAS LOVE FIELD	DALLAS, TX
HOU	ASW	WILLIAM P HOBBY	HOUSTON, TX
IND	AGL	INDIANAPOLIS INTL	INDIANAPOLIS, IN
JAX	ASO	JACKSONVILLE INTL	JACKSONVILLE, FL
MCI	ACE	KANSAS CITY INTL	KANSAS CITY, MO
MEM	ASO	MEMPHIS INTL	MEMPHIS, TN
MHT	ANE	MANCHESTER	MANCHESTER, NH
MKE	AGL	GENERAL MITCHELL INTERNATIONAL	MILWAUKEE, WI
MSY	ASW	LOUIS ARMSTRONG NEW ORLEANS INTL	NEW ORLEANS, LA
OGG	AWP	KAHULUI	KAHULUI, HI
OMA	ACE	EPPLEY AIRFIELD	OMAHA, NE
ONT	AWP	ONTARIO INTL	ONTARIO, CA
ORF	AEA	NORFOLK INTL	NORFOLK, VA
PBI	ASO	PALM BEACH INTL	WEST PALM BEACH, FL
PDX	ANM	PORTLAND INTL	PORTLAND, OR
PVD	ANE	THEODORE FRANCIS GREEN STATE	PROVIDENCE, RI
RDU	ASO	RALEIGH-DURHAM INTL	RALEIGH/DURHAM, NC
RNO	AWP	RENO/TAHOE INTERNATIONAL	RENO, NV
RSW	ASO	SOUTHWEST FLORIDA INTL	FORT MYERS, FL
SAT	ASW	SAN ANTONIO INTL	SAN ANTONIO, TX
SDF	ASO	LOUISVILLE INTL-STANDIFORD FIELD	LOUISVILLE, KY
SJC	AWP	NORMAN Y. MINETA SAN JOSE INTERNATIONAL	SAN JOSE, CA
SJU	ASO	LUIS MUNOZ MARIN INTL	SAN JUAN, PR
SMF	AWP	SACRAMENTO INTERNATIONAL	SACRAMENTO, CA
SNA	AWP	JOHN WAYNE AIRPORT-ORANGE COUNTY	SANTA ANA, CA
TUS	AWP	TUCSON INTL	TUCSON, AZ

Listed 35 Airports.

Table B-3.
List of Small Hub Towers

Location Identifier	Region	Airport Name	City, State
ABE	AEA	LEHIGH VALLEY INTERNATIONAL	ALLENTOWN, PA
ACY	AEA	ATLANTIC CITY INTERNATIONAL	ATLANTIC CITY, NJ
ALB	AEA	ALBANY INTL	ALBANY, NY
AMA	ASW	AMARILLO INTL	AMARILLO, TX
BHM	ASO	BIRMINGHAM INTL	BIRMINGHAM, AL
BIL	ANM	BILLINGS LOGAN INTL	BILLINGS, MT
BOI	ANM	BOISE AIR TERMINAL/GOWEN FLD	BOISE, ID
BTR	ASW	BATON ROUGE METROPOLITAN, RYAN FIELD	BATON ROUGE, LA
BTV	ANE	BURLINGTON INTL	BURLINGTON, VT
CAE	ASO	COLUMBIA METROPOLITAN	COLUMBIA, SC
CAK	AGL	AKRON-CANTON REGIONAL	AKRON, OH
CHS	ASO	CHARLESTON AFB/INTL	CHARLESTON, SC
CID	ACE	THE EASTERN IOWA	CEDAR RAPIDS, IA
COS	ANM	CITY OF COLORADO SPRINGS MUNI	COLORADO SPRINGS, CO
CRP	ASW	CORPUS CHRISTI INTL	CORPUS CHRISTI, TX
DAY	AGL	JAMES M COX DAYTON INTL	DAYTON, OH
DSM	ACE	DES MOINES INTL	DES MOINES, IA
ELP	ASW	EL PASO INTL	EL PASO, TX
FAI	AAL	FAIRBANKS INTL	FAIRBANKS, AK
FAT	AWP	FRESNO YOSEMITE INTERNATIONAL	FRESNO, CA
FNT	AGL	BISHOP INTERNATIONAL	FLINT, MI
GEG	ANM	SPOKANE INTL	SPOKANE, WA
GPT	ASO	GULFPORT-BILOXI INTL	GULFPORT, MS
GRB	AGL	AUSTIN STRAUBEL INTERNATIONAL	GREEN BAY, WI
GRR	AGL	GERALD R. FORD INTERNATIONAL	GRAND RAPIDS, MI
GSN	AWP	SAIPAN INTL	SAIPAN ISLAND, SP
GSO	ASO	PIEDMONT TRIAD INTERNATIONAL	GREENSBORO, NC
GSP	ASO	GREENVILLE-SPARTANBURG INTL	GREER, SC
GUM	AWP	GUAM INTERNATIONAL	AGANA, GU
HPN	AEA	WESTCHESTER COUNTY	WHITE PLAINS, NY
HRL	ASW	VALLEY INTL	HARLINGEN, TX
HSV	ASO	HUNTSVILLE INTL-CARL T JONES FIELD	HUNTSVILLE, AL
ICT	ACE	WICHITA MID-CONTINENT	WICHITA, KS
ISP	AEA	LONG ISLAND MAC ARTHUR	ISLIP, NY
ITO	AWP	HILO INTERNATIONAL	HILO, HI
JAN	ASO	JACKSON INTERNATIONAL	JACKSON, MS
KOA	AWP	KONA INTL AT KEAHOLE	KAILUA/KONA, HI
LBB	ASW	LUBBOCK INTL	LUBBOCK, TX
LEX	ASO	BLUE GRASS	LEXINGTON, KY
LGB	AWP	LONG BEACH /DAUGHERTY FIELD/	LONG BEACH, CA
LIH	AWP	LIHUE	LIHUE, HI
LIT	ASW	ADAMS FIELD	LITTLE ROCK, AR
MAF	ASW	MIDLAND INTERNATIONAL	MIDLAND, TX
MDT	AEA	HARRISBURG INTERNATIONAL	HARRISBURG, PA
MLI	AGL	QUAD CITY INTL	MOLINE, IL
MSN	AGL	DANE COUNTY REGIONAL-TRUAX FIELD	MADISON, WI
MYR	ASO	MYRTLE BEACH INTL	MYRTLE BEACH, SC
OKC	ASW	WILL ROGERS WORLD	OKLAHOMA CITY, OK
PHF	AEA	NEWPORT NEWS/WILLIAMSBURG INTERNATIONAL	NEWPORT NEWS, VA
PIE	ASO	ST PETERSBURG-CLEARWATER INTL	ST PETERSBURG-CLEARWATER, FL
PNS	ASO	PENSACOLA REGIONAL	PENSACOLA, FL
PSP	AWP	PALM SPRINGS INTERNATIONAL	PALM SPRINGS, CA
PWM	ANE	PORTLAND INTL JETPORT	PORTLAND, ME

Table B-3.
List of Small Hub Towers

Location		Airport Name	City, State
Identifier	Region		
RIC	AEA	RICHMOND INTERNATIONAL	RICHMOND, VA
ROC	AEA	GREATER ROCHESTER INTERNATIONAL	ROCHESTER, NY
SAV	ASO	SAVANNAH/HILTON HEAD INTERNATIONAL	SAVANNAH, GA
SBA	AWP	SANTA BARBARA MUNI	SANTA BARBARA, CA
SBN	AGL	SOUTH BEND REGIONAL AIRPORT	SOUTH BEND, IN
SFB	ASO	ORLANDO SANFORD	ORLANDO, FL
SRQ	ASO	SARASOTA/BRADENTON INTL	SARASOTA/BRADENTON/, FL
STT	ASO	CYRIL E KING	CHARLOTTE AMALIE, VI
SYR	AEA	SYRACUSE HANCOCK INTL	SYRACUSE, NY
TLH	ASO	TALLAHASSEE REGIONAL	TALLAHASSEE, FL
TUL	ASW	TULSA INTL	TULSA, OK
TYS	ASO	MC GHEE TYSON	KNOXVILLE, TN
XNA	ASW	NORTHWEST ARKANSAS RGNL	FAYETTEVILLE/SPRINGDALE/, AR

Listed 66 Airports.

Table B-4.
List of Non-Hub Towers

Location Identifier	Region	Airport Name	City, State
ABI	ASW	ABILENE REGIONAL	ABILENE, TX
ABY	ASO	SOUTHWEST GEORGIA REGIONAL	ALBANY, GA
ACK	ANE	NANTUCKET MEMORIAL	NANTUCKET, MA
ACT	ASW	WACO REGIONAL	WACO, TX
ADM	ASW	ARDMORE MUNI	ARDMORE, OK
ADQ	AAL	KODIAK	KODIAK, AK
ADS	ASW	ADDISON	DALLAS, TX
ADW	AEA	ANDREWS AFB	CAMP SPRINGS, MD
AEX	ASW	ALEXANDRIA INTL	ALEXANDRIA, LA
AFW	ASW	FORT WORTH ALLIANCE	FORT WORTH, TX
AGC	AEA	ALLEGHENY COUNTY	PITTSBURGH, PA
AGS	ASO	AUGUSTA RGNL AT BUSH FIELD	AUGUSTA, GA
AHN	ASO	ATHENS/BEN EPPS	ATHENS, GA
AKN	AAL	KING SALMON	KING SALMON, AK
ALN	AGL	ST LOUIS REGIONAL	ALTON/ST LOUIS, IL
ALO	ACE	WATERLOO MUNI	WATERLOO, IA
ALW	ANM	WALLA WALLA REGIONAL	WALLA WALLA, WA
ANE	AGL	ANOKA COUNTY-BLAINE ARPT(JANES FIELD)	MINNEAPOLIS, MN
APA	ANM	CENTENNIAL	DENVER, CO
APC	AWP	NAPA COUNTY	NAPA, CA
APF	ASO	NAPLES MUNI	NAPLES, FL
ARA	ASW	ACADIANA REGIONAL	NEW IBERIA, LA
ARB	AGL	ANN ARBOR MUNI	ANN ARBOR, MI
ARR	AGL	AURORA MUNI	CHICAGO/AURORA, IL
ASE	ANM	ASPEN-PITKIN CO/SARDY FIELD	ASPEN, CO
ASG	ASW	SPRINGDALE MUNI	SPRINGDALE, AR
ASH	ANE	BOIRE FIELD	NASHUA, NH
ATW	AGL	OUTAGAMIE COUNTY REGIONAL	APPLETON, WI
AVL	ASO	ASHEVILLE REGIONAL	ASHEVILLE, NC
AVP	AEA	WILKES-BARRE/SCRANTON INTL	WILKES-BARRE/SCRANTON, PA
AZO	AGL	KALAMAZOO/BATTLE CREEK INTERNATIONAL	KALAMAZOO, MI
BAF	ANE	BARNES MUNI	WESTFIELD/SPRINGFIELD, MA
BAK	AGL	COLUMBUS MUNI	COLUMBUS, IN
BCT	ASO	BOCA RATON	BOCA RATON, FL
BDR	ANE	IGOR I SIKORSKY MEMORIAL	BRIDGEPORT, CT
BED	ANE	LAURENCE G HANSCOM FLD	BEDFORD, MA
BET	AAL	BETHEL	BETHEL, AK
BFI	ANM	BOEING FIELD/KING COUNTY INTL	SEATTLE, WA
BFL	AWP	MEADOWS FIELD	BAKERSFIELD, CA
BFM	ASO	MOBILE DOWNTOWN	MOBILE, AL
BGM	AEA	GREATER BINGHAMTON/EDWIN A LINK FIELD	BINGHAMTON, NY
BGR	ANE	BANGOR INTL	BANGOR, ME
BIS	AGL	BISMARCK MUNI	BISMARCK, ND
BJC	ANM	JEFFCO	DENVER, CO
BKL	AGL	BURKE LAKEFRONT	CLEVELAND, OH
BLI	ANM	BELLINGHAM INTL	BELLINGHAM, WA
BMG	AGL	MONROE COUNTY	BLOOMINGTON, IN
BMI	AGL	CENTRAL IL REGL ARPT AT BLOOMINGTON-NORMAL	BLOOMINGTON/NORMAL, IL
BPT	ASW	SOUTHEAST TEXAS REGIONAL	BEAUMONT/PORT ARTHUR, TX
BRO	ASW	BROWNSVILLE/SOUTH PADRE ISLAND INT'L	BROWNSVILLE, TX
BTL	AGL	W K KELLOGG	BATTLE CREEK, MI
BVY	ANE	BEVERLY MUNI	BEVERLY, MA
BZN	ANM	GALLATIN FIELD	BOZEMAN, MT

Table B-4.
List of Non-Hub Towers

Location Identifier	Region	Airport Name	City, State
CCR	AWP	BUCHANAN FIELD	CONCORD, CA
CDW	AEA	ESSEX COUNTY	CALDWELL, NJ
CGF	AGL	CUYAHOGA COUNTY	CLEVELAND, OH
CGX	AGL	MERRILL C MEIGS	CHICAGO, IL
CHA	ASO	LOVELL FIELD	CHATTANOOGA, TN
CHD	AWP	CHANDLER MUNI	CHANDLER, AZ
CHO	AEA	CHARLOTTESVILLE-ALBEMARLE	CHARLOTTESVILLE, VA
CIC	AWP	CHICO MUNI	CHICO, CA
CKB	AEA	HARRISON/MARION REGIONAL	CLARKSBURG, WV
CLL	ASW	EASTERWOOD FIELD	COLLEGE STATION, TX
CMA	AWP	CAMARILLO	CAMARILLO, CA
CMJ	AGL	UNIVERSITY OF ILLINOIS-WILLARD	CHAMPAIGN/URBANA/, IL
CNO	AWP	CHINO	CHINO, CA
CNW	ASW	TSTC WACO	WACO, TX
COU	ACE	COLUMBIA REGIONAL	COLUMBIA, MO
CPR	ANM	NATRONA COUNTY INTL	CASPER, WY
CPS	AGL	ST LOUIS DOWNTOWN - PARKS	CAHOKIA/ST LOUIS, IL
CRE	ASO	GRAND STRAND	NORTH MYRTLE BEACH, SC
CRG	ASO	CRAIG MUNI	JACKSONVILLE, FL
CRQ	AWP	MC CLELLAN-PALOMAR	CARLSBAD, CA
CRW	AEA	YEAGER	CHARLESTON, WV
CSG	ASO	COLUMBUS METROPOLITAN	COLUMBUS, GA
CWA	AGL	CENTRAL WISCONSIN	MOSINEE, WI
CWF	ASW	CHENNAULT INTL	LAKE CHARLES, LA
CXY	AEA	CAPITAL CITY	HARRISBURG, PA
CYS	ANM	CHEYENNE	CHEYENNE, WY
DAB	ASO	DAYTONA BEACH INTL	DAYTONA BEACH, FL
DBQ	ACE	DUBUQUE REGIONAL	DUBUQUE, IA
DEC	AGL	DECATUR	DECATUR, IL
DET	AGL	DETROIT CITY	DETROIT, MI
DHN	ASO	DOTHAN RGNL	DOTHAN, AL
DLH	AGL	DULUTH INTL	DULUTH, MN
DPA	AGL	DUPAGE	CHICAGO/WEST CHICAGO/, IL
DTN	ASW	SHREVEPORT DOWNTOWN	SHREVEPORT, LA
DVT	AWP	PHOENIX DEER VALLEY	PHOENIX, AZ
DWH	ASW	DAVID WAYNE HOOKS MEMORIAL	HOUSTON, TX
DXR	ANE	DANBURY MUNI	DANBURY, CT
EGE	ANM	EAGLE COUNTY REGIONAL	EAGLE, CO
EKO	AWP	ELKO REGIONAL	ELKO, NV
ELM	AEA	ELMIRA/CORNING REGIONAL	ELMIRA/CORNING, NY
EMT	AWP	EL MONTE	EL MONTE, CA
ENA	AAL	KENAI MUNI	KENAI, AK
ENW	AGL	KENOSHA REGIONAL	KENOSHA, WI
ERI	AEA	ERIE INTL/TOM RIDGE FIELD	ERIE, PA
EUG	ANM	MAHLON SWEET FIELD	EUGENE, OR
EVV	AGL	EVANSVILLE REGIONAL	EVANSVILLE, IN
EWB	ANE	NEW BEDFORD REGIONAL	NEW BEDFORD, MA
EWN	ASO	CRAVEN COUNTY REGIONAL	NEW BERN, NC
EYW	ASO	KEY WEST INTL	KEY WEST, FL
FAR	AGL	HECTOR INTL	FARGO, ND
FAY	ASO	FAYETTEVILLE REGIONAL/GRANNIS FIELD	FAYETTEVILLE, NC
FCA	ANM	GLACIER PARK INTL	KALISPELL, MT
FCM	AGL	FLYING CLOUD	MINNEAPOLIS, MN

Table B-4.
List of Non-Hub Towers

Location Identifier	Region	Airport Name	City, State
FFZ	AWP	FALCON FLD	MESA, AZ
FLG	AWP	FLAGSTAFF PULLIAM	FLAGSTAFF, AZ
FLO	ASO	FLORENCE REGIONAL	FLORENCE, SC
FMN	ASW	FOUR CORNERS REGIONAL	FARMINGTON, NM
FMY	ASO	PAGE FIELD	FORT MYERS, FL
FOE	ACE	FORBES FIELD	TOPEKA, KS
FPR	ASO	ST LUCIE COUNTY INTL	FORT PIERCE, FL
FRG	AEA	REPUBLIC	FARMINGDALE, NY
FSD	AGL	JOE FOSS FIELD	SIOUX FALLS, SD
FSM	ASW	FORT SMITH REGIONAL	FORT SMITH, AR
FTW	ASW	FORT WORTH MEACHAM INTL	FORT WORTH, TX
FTY	ASO	FULTON COUNTY AIRPORT-BROWN FIELD	ATLANTA, GA
FUL	AWP	FULLERTON MUNI	FULLERTON, CA
FWA	AGL	FORT WAYNE INTERNATIONAL	FORT WAYNE, IN
FXE	ASO	FORT LAUDERDALE EXECUTIVE	FORT LAUDERDALE, FL
FYV	ASW	DRAKE FIELD	FAYETTEVILLE, AR
GCK	ACE	GARDEN CITY REGIONAL	GARDEN CITY, KS
GCN	AWP	GRAND CANYON NATIONAL PARK	GRAND CANYON, AZ
GEU	AWP	GLENDALE MUNICIPAL	GLENDALE, AZ
GFK	AGL	GRAND FORKS INTL	GRAND FORKS, ND
GGG	ASW	EAST TEXAS RGNL	LONGVIEW, TX
GJT	ANM	WALKER FIELD	GRAND JUNCTION, CO
GLH	ASO	MID DELTA RGNL	GREENVILLE, MS
GMU	ASO	GREENVILLE DOWNTOWN	GREENVILLE, SC
GNV	ASO	GAINESVILLE RGNL	GAINESVILLE, FL
GON	ANE	GROTON-NEW LONDON	GROTON NEW LONDON, CT
GPM	ASW	GRAND PRAIRIE MUNI	GRAND PRAIRIE, TX
GRI	ACE	CENTRAL NEBRASKA REGIONAL	GRAND ISLAND, NE
GTF	ANM	GREAT FALLS INTL	GREAT FALLS, MT
GYR	AWP	PHOENIX GOODYEAR	GOODYEAR, AZ
GYV	AGL	GARY/CHICAGO REGIONAL	GARY, IN
HEF	AEA	MANASSAS REGIONAL/HARRY P. DAVIS FIELD	MANASSAS, VA
HFD	ANE	HARTFORD-BRAINARD	HARTFORD, CT
HGR	AEA	HAGERSTOWN REGIONAL-RICHARD A HENSON FLD	HAGERSTOWN, MD
HHR	AWP	JACK NORTHROP FIELD/HAWTHORNE MUNICIPAL	HAWTHORNE, CA
HIO	ANM	PORTLAND-HILLSBORO	PORTLAND, OR
HKS	ASO	HAWKINS FIELD	JACKSON, MS
HKY	ASO	HICKORY REGIONAL	HICKORY, NC
HLG	AEA	WHEELING OHIO CO	WHEELING, WV
HLN	ANM	HELENA REGIONAL	HELENA, MT
HND	AWP	HENDERSON	LAS VEGAS, NV
HOB	ASW	LEA COUNTY RGNL	HOBBS, NM
HTS	AEA	TRI-STATE/MILTON J. FERGUSON FIELD	HUNTINGTON, WV
HUF	AGL	TERRE HAUTE INTERNATIONAL-HULMAN FIELD	TERRE HAUTE, IN
HUM	ASW	HOUMA-TERREBONNE	HOUMA, LA
HUT	ACE	HUTCHINSON MUNI	HUTCHINSON, KS
HVN	ANE	TWEED-NEW HAVEN	NEW HAVEN, CT
HWD	AWP	HAYWARD EXECUTIVE	HAYWARD, CA
HWO	ASO	NORTH PERRY	HOLLYWOOD, FL
HYA	ANE	BARNSTABLE MUNI-BOARDMAN/POLANDO FIELD	HYANNIS, MA
IAG	AEA	NIAGARA FALLS INTL	NIAGARA FALLS, NY
IDA	ANM	IDAHO FALLS RGNL	IDAHO FALLS, ID
IFP	AWP	LAUGHLIN/BULLHEAD INTERNATIONAL	BULLHEAD CITY, AZ

Table B-4.
List of Non-Hub Towers

Location Identifier	Region	Airport Name	City, State
ILG	AEA	NEW CASTLE COUNTY	WILMINGTON, DE
ILM	ASO	WILMINGTON INTL	WILMINGTON, NC
INT	ASO	SMITH REYNOLDS	WINSTON SALEM, NC
IPT	AEA	WILLIAMSPORT RGNL	WILLIAMSPORT, PA
ISM	ASO	KISSIMMEE GATEWAY	ORLANDO, FL
ISO	ASO	KINSTON RGNL JETPORT AT STALLINGS FLD	KINSTON, NC
ITH	AEA	ITHACA TOMPKINS REGIONAL	ITHACA, NY
IWA	AWP	WILLIAMS GATEWAY	PHOENIX, AZ
IXD	ACE	NEW CENTURY AIRCENTER	OLATHE, KS
JAC	ANM	JACKSON HOLE	JACKSON, WY
JEF	ACE	JEFFERSON CITY MEML	JEFFERSON CITY, MO
JLN	ACE	JOPLIN REGIONAL	JOPLIN, MO
JNU	AAL	JUNEAU INTL	JUNEAU, AK
JQF	ASO	CONCORD REGIONAL	CONCORD, NC
JVL	AGL	ROCK COUNTY	JANESVILLE, WI
JXN	AGL	JACKSON COUNTY-REYNOLDS FIELD	JACKSON, MI
KWA	AWP	BUCHOLZ AAF(KWAJALEIN KMR)(ATOL)	KWAJALEIN/MARSHALL IS, SP
LAF	AGL	PURDUE UNIVERSITY	LAFAYETTE, IN
LAL	ASO	LAKELAND LINDER RGNL	LAKELAND, FL
LAN	AGL	CAPITAL CITY	LANSING, MI
LAW	ASW	LAWTON-FORT SILL REGIONAL	LAWTON, OK
LBE	AEA	ARNOLD PALMER REGIONAL	LATROBE, PA
LCH	ASW	LAKE CHARLES REGIONAL	LAKE CHARLES, LA
LEB	ANE	LEBANON MUNI	LEBANON, NH
LFT	ASW	LAFAYETTE REGIONAL	LAFAYETTE, LA
LMT	ANM	KLAMATH FALLS INTERNATIONAL	KLAMATH FALLS, OR
LNK	ACE	LINCOLN MUNI	LINCOLN, NE
LNS	AEA	LANCASTER	LANCASTER, PA
LOU	ASO	BOWMAN FIELD	LOUISVILLE, KY
LRD	ASW	LAREDO INTL	LAREDO, TX
LSE	AGL	LA CROSSE MUNI	LA CROSSE, WI
LUK	ASO	CINCINNATI MUNI AIRPORT LUNKEN FIELD	CINCINNATI, OH
LVK	AWP	LIVERMORE MUNI	LIVERMORE, CA
LWB	AEA	GREENBRIER VALLEY	LEWISBURG, WV
LWM	ANE	LAWRENCE MUNI	LAWRENCE, MA
LWS	ANM	LEWISTON-NEZ PERCE COUNTY	LEWISTON, ID
LYH	AEA	LYNCHBURG REGIONAL/PRESTON GLENN FLD	LYNCHBURG, VA
LZU	ASO	GWINNETT COUNTY - BRISCOE FIELD	LAWRENCEVILLE, GA
MBS	AGL	MBS INTL	SAGINAW, MI
MCN	ASO	MIDDLE GEORGIA REGIONAL	MACON, GA
MDH	AGL	SOUTHERN ILLINOIS	CARBONDALE/MURPHYSBORO, IL
MEI	ASO	KEY FIELD	MERIDIAN, MS
MFD	AGL	MANSFIELD LAHM REGIONAL	MANSFIELD, OH
MFE	ASW	MC ALLEN MILLER INTL	MC ALLEN, TX
MFR	ANM	ROGUE VALLEY INTERNATIONAL - MEDFORD	MEDFORD, OR
MGM	ASO	MONTGOMERY RGNL (DANNELLY FIELD)	MONTGOMERY, AL
MGW	AEA	MORGANTOWN MUNI-WALTER L. BILL HART FLD	MORGANTOWN, WV
MHK	ACE	MANHATTAN RGNL	MANHATTAN, KS
MHR	AWP	SACRAMENTO MATHER	SACRAMENTO, CA
MIC	AGL	CRYSTAL	MINNEAPOLIS, MN
MIE	AGL	DELAWARE COUNTY - JOHNSON FIELD	MUNCIE, IN
MKC	ACE	CHARLES B. WHEELER DOWNTOWN	KANSAS CITY, MO
MKG	AGL	MUSKEGON COUNTY	MUSKEGON, MI

Table B-4.
List of Non-Hub Towers

Location Identifier	Region	Airport Name	City, State
MKK	AWP	MOLOKAI	KAUNAKAKAI, HI
MKL	ASO	MC KELLAR-SIPES REGIONAL	JACKSON, TN
MLB	ASO	MELBOURNE INTL	MELBOURNE, FL
MLU	ASW	MONROE REGIONAL	MONROE, LA
MMU	AEA	MORRISTOWN MUNI	MORRISTOWN, NJ
MOB	ASO	MOBILE REGIONAL	MOBILE, AL
MOD	AWP	MODESTO CITY-CO-HARRY SHAM FLD	MODESTO, CA
MOT	AGL	MINOT INTL	MINOT, ND
MQY	ASO	SMYRNA	SMYRNA, TN
MRI	AAL	MERRILL FIELD	ANCHORAGE, AK
MRY	AWP	MONTEREY PENINSULA	MONTEREY, CA
MSO	ANM	MISSOULA INTERNATIONAL	MISSOULA, MT
MTN	AEA	MARTIN STATE	BALTIMORE, MD
MVY	ANE	MARTHAS VINEYARD	VINEYARD HAVEN, MA
MWA	AGL	WILLIAMSON COUNTY REGIONAL	MARION, IL
MWC	AGL	LAWRENCE J TIMMERMAN	MILWAUKEE, WI
MWH	ANM	GRANT COUNTY INTL	MOSES LAKE, WA
MYF	AWP	MONTGOMERY FIELD	SAN DIEGO, CA
NEW	ASW	LAKEFRONT	NEW ORLEANS, LA
NQA	ASO	MILLINGTON MUNI	MILLINGTON, TN
OGD	ANM	OGDEN-HINCKLEY	OGDEN, UT
OJC	ACE	JOHNSON COUNTY EXECUTIVE	OLATHE, KS
OLM	ANM	OLYMPIA	OLYMPIA, WA
OPF	ASO	OPA LOCKA	MIAMI, FL
QRH	ANE	WORCESTER REGIONAL	WORCESTER, MA
ORL	ASO	EXECUTIVE	ORLANDO, FL
OSH	AGL	WITTMAN REGIONAL	OSHKOSH, WI
OSU	AGL	OHIO STATE UNIVERSITY	COLUMBUS, OH
OUN	ASW	UNIVERSITY OF OKLAHOMA WESTHEIMER	NORMAN, OK
OWB	ASO	OWENSBORO-DAVISS COUNTY	OWENSBORO, KY
OWD	ANE	NORWOOD MEMORIAL	NORWOOD, MA
OXC	ANE	WATERBURY-OXFORD	OXFORD, CT
OXR	AWP	OXNARD	OXNARD, CA
PAE	ANM	SNOHOMISH COUNTY (PAINE FLD)	EVERETT, WA
PAH	ASO	BARKLEY REGIONAL	PADUCAH, KY
PAO	AWP	PALO ALTO ARPT OF SANTA CLARA CO	PALO ALTO, CA
PDK	ASO	DEKALB-PEACHTREE	ATLANTA, GA
PDT	ANM	EASTERN OREGON REGIONAL AT PENDLETON	PENDLETON, OR
PFN	ASO	PANAMA CITY-BAY CO INTL	PANAMA CITY, FL
PIA	AGL	GREATER PEORIA REGIONAL	PEORIA, IL
PIH	ANM	POCATELLO REGIONAL	POCATELLO, ID
PKB	AEA	WOOD COUNTY AIRPORT GILL ROBB WILSON FLD	PARKERSBURG, WV
PMD	AWP	PALMDALE PRODN FLT/TEST INSTLN AF PLANT 42	PALMDALE, CA
PMP	ASO	POMPANO BEACH AIRPARK	POMPANO BEACH, FL
PNE	AEA	NORTHEAST PHILADELPHIA	PHILADELPHIA, PA
POC	AWP	BRACKETT FIELD	LA VERNE, CA
POU	AEA	DUTCHESS COUNTY	POUGHKEEPSIE, NY
PPG	AWP	PAGO PAGO INTL	PAGO PAGO, AS
PRC	AWP	ERNEST A. LOVE FIELD	PRESCOTT, AZ
PSC	ANM	TRI-CITIES	PASCO, WA
PTK	AGL	OAKLAND COUNTY INTERNATIONAL	PONTIAC, MI
PUB	ANM	PUEBLO MEMORIAL	PUEBLO, CO
PWA	ASW	WILEY POST	OKLAHOMA CITY, OK

Table B-4.
List of Non-Hub Towers

Location Identifier	Region	Airport Name	City, State
PWK	AGL	PALWAUKEE MUNI	CHICAGO/PROSPECT HGTS/WHEE, IL
RAL	AWP	RIVERSIDE MUNI	RIVERSIDE, CA
RAP	AGL	RAPID CITY REGIONAL	RAPID CITY, SD
RBD	ASW	DALLAS EXECUTIVE	DALLAS, TX
RDD	AWP	REDDING MUNI	REDDING, CA
RDG	AEA	READING REGIONAL/CARL A SPAATZ FIELD	READING, PA
RDM	ANM	ROBERTS FIELD	REDMOND, OR
RFD	AGL	GREATER ROCKFORD	ROCKFORD, IL
RHV	AWP	REID-HILLVIEW OF SANTA CLARA COUNTY	SAN JOSE, CA
RNT	ANM	RENTON MUNI	RENTON, WA
ROA	AEA	ROANOKE REGIONAL/WOODRUM FIELD	ROANOKE, VA
ROW	ASW	ROSWELL INDUSTRIAL AIR CENTER	ROSWELL, NM
RST	AGL	ROCHESTER INTERNATIONAL	ROCHESTER, MN
RVS	ASW	RICHARD LLOYD JONES JR	TULSA, OK
RYN	AWP	RYAN FIELD	TUCSON, AZ
RYY	ASO	COBB COUNTY-MC COLLUM FIELD	ATLANTA, GA
SAC	AWP	SACRAMENTO EXECUTIVE	SACRAMENTO, CA
SAF	ASW	SANTA FE MUNI	SANTA FE, NM
SAW	AGL	SAWYER INTERNATIONAL	MARQUETTE, MI
SBP	AWP	SAN LUIS COUNTY REGIONAL	SAN LUIS OBISPO, CA
SBY	AEA	SALISBURY-OCEAN CITY WICOMICO REGIONAL	SALISBURY, MD
SCK	AWP	STOCKTON METROPOLITAN	STOCKTON, CA
SDL	AWP	SCOTTSDALE	SCOTTSDALE, AZ
SDM	AWP	BROWN FIELD MUNI	SAN DIEGO, CA
SEE	AWP	GILLESPIE FIELD	SAN DIEGO/EL CAJON/, CA
SFF	ANM	FELTS FIELD	SPOKANE, WA
SGF	ACE	SPRINGFIELD-BRANSON REGIONAL	SPRINGFIELD, MO
SGJ	ASO	ST AUGUSTINE	ST AUGUSTINE, FL
SGR	ASW	SUGAR LAND RGNL	HOUSTON, TX
SHV	ASW	SHREVEPORT REGIONAL	SHREVEPORT, LA
SIG	ASO	FERNANDO LUIS RIBAS DOMINICCI	SAN JUAN, PR
SJT	ASW	SAN ANGELO REGIONAL/MATHIS FIELD	SAN ANGELO, TX
SLE	ANM	M McNARY FLD	SALEM, OR
SLN	ACE	SALINA MUNI	SALINA, KS
SMO	AWP	SANTA MONICA MUNI	SANTA MONICA, CA
SMX	AWP	SANTA MARIA PUB/CAPT G ALLAN HANCOCK FLD	SANTA MARIA, CA
SNS	AWP	SALINAS MUNI	SALINAS, CA
SPG	ASO	ALBERT WHITTED	ST PETERSBURG, FL
SPI	AGL	CAPITAL	SPRINGFIELD, IL
SQL	AWP	SAN CARLOS	SAN CARLOS, CA
SSF	ASW	STINSON MUNI	SAN ANTONIO, TX
STJ	ACE	ROSECRANS MEMORIAL	ST JOSEPH, MO
STP	AGL	ST PAUL DOWNTOWN HOLMAN FLD	ST PAUL, MN
STS	AWP	SONOMA COUNTY	SANTA ROSA, CA
STX	ASO	HENRY E ROHLSSEN	CHRISTIANSTED, VI
SUA	ASO	WITHAM FIELD	STUART, FL
SUN	ANM	FRIEDMAN MEMORIAL	HAILEY, ID
SUS	ACE	SPIRIT OF ST LOUIS	ST LOUIS, MO
SUX	ACE	SIOUX GATEWAY/COL. BUD DAY FIELD	SIOUX CITY, IA
SWF	AEA	STEWART INT'L	NEWBURGH, NY
SWO	ASW	STILLWATER RGNL	STILLWATER, OK
TCL	ASO	TUSCALOOSA MUNI	TUSCALOOSA, AL
TEB	AEA	TETERBORO	TETERBORO, NJ

Table B-4.
List of Non-Hub Towers

Location Identifier	Region	Airport Name	City, State
TIW	ANM	TACOMA NARROWS	TACOMA, WA
TIX	ASO	SPACE COAST REGIONAL	TITUSVILLE, FL
TKI	ASW	COLLIN COUNTY REGIONAL	MC KINNEY, TX
TMB	ASO	KENDALL-TAMIAMI EXECUTIVE	MIAMI, FL
TOA	AWP	ZAMPERINI FIELD	TORRANCE, CA
TOL	AGL	TOLEDO EXPRESS	TOLEDO, OH
TOP	ACE	PHILIP BILLARD MUNI	TOPEKA, KS
TRI	ASO	TRI-CITIES RGNL TN/VA	BRISTOL/JOHNSON/KINGSPORT, TN
TTD	ANM	PORTLAND-TROUTDALE	PORTLAND, OR
TTN	AEA	TRENTON MERCER	TRENTON, NJ
TUP	ASO	TUPELO RGNL	TUPELO, MS
TVC	AGL	CHERRY CAPITAL	TRAVERSE CITY, MI
TVL	AWP	LAKE TAHOE	SOUTH LAKE TAHOE, CA
TWF	ANM	JOSLIN FIELD - MAGIC VALLEY RGNL	TWIN FALLS, ID
TXK	ASW	TEXARKANA REGIONAL-WEBB FIELD	TEXARKANA, AR
TYR	ASW	TYLER POUNDS RGNL	TYLER, TX
TZR	AGL	BOLTON FIELD	COLUMBUS, OH
UCA	AEA	ONEIDA COUNTY	UTICA, NY
UES	AGL	WAUKESHA COUNTY	WAUKESHA, WI
UGN	AGL	WAUKEGAN REGIONAL	CHICAGO/WAUKEGAN, IL
VBG	AWP	VANDENBERG AFB	SANTA BARBARA, CA
VCV	AWP	SOUTHERN CALIFORNIA LOGISTICS	VICTORVILLE, CA
VGT	AWP	NORTH LAS VEGAS	LAS VEGAS, NV
VLD	ASO	VALDOSTA RGNL	VALDOSTA, GA
VNY	AWP	VAN NUYS	VAN NUYS, CA
VQQ	ASO	CECIL FIELD	JACKSONVILLE, FL
VRB	ASO	VERO BEACH MUNI	VERO BEACH, FL
WDG	ASW	ENID WOODRING RGNL	ENID, OK
WHP	AWP	WHITEMAN	LOS ANGELES, CA
WJF	AWP	GENERAL WM J FOX AIRFIELD	LANCASTER, CA
YIP	AGL	WILLOW RUN	DETROIT, MI
YKM	ANM	YAKIMA AIR TERMINAL/MCALLISTER FIELD	YAKIMA, WA
YNG	AGL	YOUNGSTOWN-WARREN REGIONAL	YOUNGSTOWN/WARREN, OH

Listed 351 Airports.

Table B-5.
List of FAA Contract Towers

Location Identifier	Region	Airport Name	City, State
ABY	ASO	SOUTHWEST GEORGIA REGIONAL	ALBANY, GA
ADM	ASW	ARDMORE MUNI	ARDMORE, OK
ADQ	AAL	KODIAK	KODIAK, AK
AEX	ASW	ALEXANDRIA INTL	ALEXANDRIA, LA
AHN	ASO	ATHENS/BEN EPPS	ATHENS, GA
AKN	AAL	KING SALMON	KING SALMON, AK
ALN	AGL	ST LOUIS REGIONAL	ALTON/ST LOUIS, IL
ALW	ANM	WALLA WALLA REGIONAL	WALLA WALLA, WA
ANE	AGL	ANOKA COUNTY-BLAINE ARPT(JANES FIELD)	MINNEAPOLIS, MN
APF	ASO	NAPLES MUNI	NAPLES, FL
ARA	ASW	ACADIANA REGIONAL	NEW IBERIA, LA
ASG	ASW	SPRINGDALE MUNI	SPRINGDALE, AR
ASH	ANE	BOIRE FIELD	NASHUA, NH
ATW	AGL	OUTAGAMIE COUNTY REGIONAL	APPLETON, WI
BAF	ANE	BARNES MUNI	WESTFIELD/SPRINGFIELD, MA
BAK	AGL	COLUMBUS MUNI	COLUMBUS, IN
BCT	ASO	BOCA RATON	BOCA RATON, FL
BDR	ANE	IGOR I SIKORSKY MEMORIAL	BRIDGEPORT, CT
BET	AAL	BETHEL	BETHEL, AK
BFM	ASO	MOBILE DOWNTOWN	MOBILE, AL
BKL	AGL	BURKE LAKEFRONT	CLEVELAND, OH
BLI	ANM	BELLINGHAM INTL	BELLINGHAM, WA
BMG	AGL	MONROE COUNTY	BLOOMINGTON, IN
BMI	AGL	CENTRAL IL REGL ARPT AT BLOOMINGTON-NORMAL	BLOOMINGTON/NORMAL, IL
BRO	ASW	BROWNSVILLE/SOUTH PADRE ISLAND INT'L	BROWNSVILLE, TX
BTL	AGL	W K KELLOGG	BATTLE CREEK, MI
BVY	ANE	BEVERLY MUNI	BEVERLY, MA
BZN	ANM	GALLATIN FIELD	BOZEMAN, MT
CGF	AGL	CUYAHOGA COUNTY	CLEVELAND, OH
CGX	AGL	MERRILL C MEIGS	CHICAGO, IL
CHD	AWP	CHANDLER MUNI	CHANDLER, AZ
CHO	AEA	CHARLOTTESVILLE-ALBEMARLE	CHARLOTTESVILLE, VA
CIC	AWP	CHICO MUNI	CHICO, CA
CLL	ASW	EASTERWOOD FIELD	COLLEGE STATION, TX
CNW	ASW	TSTC WACO	WACO, TX
COU	ACE	COLUMBIA REGIONAL	COLUMBIA, MO
CRE	ASO	GRAND STRAND	NORTH MYRTLE BEACH, SC
CRG	ASO	CRAIG MUNI	JACKSONVILLE, FL
CWA	AGL	CENTRAL WISCONSIN	MOSINEE, WI
CWF	ASW	CHENNAULT INTL	LAKE CHARLES, LA
CXY	AEA	CAPITAL CITY	HARRISBURG, PA
CYS	ANM	CHEYENNE	CHEYENNE, WY
DBQ	ACE	DUBUQUE REGIONAL	DUBUQUE, IA
DEC	AGL	DECATUR	DECATUR, IL
DET	AGL	DETROIT CITY	DETROIT, MI
DHN	ASO	DOTHAN RGNL	DOTHAN, AL
DTN	ASW	SHREVEPORT DOWNTOWN	SHREVEPORT, LA
DXR	ANE	DANBURY MUNI	DANBURY, CT
EGE	ANM	EAGLE COUNTY REGIONAL	EAGLE, CO
EKO	AWP	ELKO REGIONAL	ELKO, NV
ENA	AAL	KENAI MUNI	KENAI, AK
ENW	AGL	KENOSHA REGIONAL	KENOSHA, WI
EWB	ANE	NEW BEDFORD REGIONAL	NEW BEDFORD, MA

Table B-5.
List of FAA Contract Towers

Location Identifier	Region	Airport Name	City, State
EWN	ASO	CRAVEN COUNTY REGIONAL	NEW BERN, NC
EYW	ASO	KEY WEST INTL	KEY WEST, FL
FCA	ANM	GLACIER PARK INTL	KALISPELL, MT
FLG	AWP	FLAGSTAFF PULLIAM	FLAGSTAFF, AZ
FMN	ASW	FOUR CORNERS REGIONAL	FARMINGTON, NM
FMY	ASO	PAGE FIELD	FORT MYERS, FL
FOE	ACE	FORBES FIELD	TOPEKA, KS
FTY	ASO	FULTON COUNTY AIRPORT-BROWN FIELD	ATLANTA, GA
FUL	AWP	FULLERTON MUNI	FULLERTON, CA
FYV	ASW	DRAKE FIELD	FAYETTEVILLE, AR
GCK	ACE	GARDEN CITY REGIONAL	GARDEN CITY, KS
GEU	AWP	GLENDALE MUNICIPAL	GLENDALE, AZ
GJT	ANM	WALKER FIELD	GRAND JUNCTION, CO
GLH	ASO	MID DELTA RGNL	GREENVILLE, MS
GMU	ASO	GREENVILLE DOWNTOWN	GREENVILLE, SC
GNV	ASO	GAINESVILLE RGNL	GAINESVILLE, FL
GON	ANE	GROTON-NEW LONDON	GROTON NEW LONDON, CT
GPM	ASW	GRAND PRAIRIE MUNI	GRAND PRAIRIE, TX
GRI	ACE	CENTRAL NEBRASKA REGIONAL	GRAND ISLAND, NE
GSN	AWP	SAIPAN INTL	SAIPAN ISLAND, SP
GUM	AWP	GUAM INTERNATIONAL	AGANA, GU
GYR	AWP	PHOENIX GOODYEAR	GOODYEAR, AZ
GYV	AGL	GARY/CHICAGO REGIONAL	GARY, IN
HFD	ANE	HARTFORD-BRAINARD	HARTFORD, CT
HGR	AEA	HAGERSTOWN REGIONAL-RICHARD A HENSON FLD	HAGERSTOWN, MD
HHR	AWP	JACK NORTHROP FIELD/HAWTHORNE MUNICIPAL	HAWTHORNE, CA
HKS	ASO	HAWKINS FIELD	JACKSON, MS
HKY	ASO	HICKORY REGIONAL	HICKORY, NC
HLG	AEA	WHEELING OHIO CO	WHEELING, WV
HND	AWP	HENDERSON	LAS VEGAS, NV
HOB	ASW	LEA COUNTY RGNL	HOBBS, NM
HRL	ASW	VALLEY INTL	HARLINGEN, TX
HUM	ASW	HOUMA-TERREBONNE	HOUMA, LA
HUT	ACE	HUTCHINSON MUNI	HUTCHINSON, KS
HVN	ANE	TWEED-NEW HAVEN	NEW HAVEN, CT
HWO	ASO	NORTH PERRY	HOLLYWOOD, FL
HYA	ANE	BARNSTABLE MUNI-BOARDMAN/POLANDO FIELD	HYANNIS, MA
IAG	AEA	NIAGARA FALLS INTL	NIAGARA FALLS, NY
IDA	ANM	IDAHO FALLS RGNL	IDAHO FALLS, ID
IFP	AWP	LAUGHLIN/BULLHEAD INTERNATIONAL	BULLHEAD CITY, AZ
INT	ASO	SMITH REYNOLDS	WINSTON SALEM, NC
IPT	AEA	WILLIAMSPORT RGNL	WILLIAMSPORT, PA
ISM	ASO	KISSIMMEE GATEWAY	ORLANDO, FL
ISO	ASO	KINSTON RGNL JETPORT AT STALLINGS FLD	KINSTON, NC
ITH	AEA	ITHACA TOMPKINS REGIONAL	ITHACA, NY
IWA	AWP	WILLIAMS GATEWAY	PHOENIX, AZ
IXD	ACE	NEW CENTURY AIRCENTER	OLATHE, KS
JAC	ANM	JACKSON HOLE	JACKSON, WY
JEF	ACE	JEFFERSON CITY MEML	JEFFERSON CITY, MO
JLN	ACE	JOPLIN REGIONAL	JOPLIN, MO
JQF	ASO	CONCORD REGIONAL	CONCORD, NC
JVL	AGL	ROCK COUNTY	JANESVILLE, WI
JXN	AGL	JACKSON COUNTY-REYNOLDS FIELD	JACKSON, MI

Table B-5.
List of FAA Contract Towers

Location Identifier	Region	Airport Name	City, State
KOA	AWP	KONA INTL AT KEAHOLE	KAILUA/KONA, HI
LAL	ASO	LAKELAND LINDER RGNL	LAKELAND, FL
LAW	ASW	LAWTON-FORT SILL REGIONAL	LAWTON, OK
LBE	AEA	ARNOLD PALMER REGIONAL	LATROBE, PA
LEB	ANE	LEBANON MUNI	LEBANON, NH
LIH	AWP	LIHUE	LIHUE, HI
LMT	ANM	KLAMATH FALLS INTERNATIONAL	KLAMATH FALLS, OR
LNS	AEA	LANCASTER	LANCASTER, PA
LRD	ASW	LAREDO INTL	LAREDO, TX
LSE	AGL	LA CROSSE MUNI	LA CROSSE, WI
LUK	ASO	CINCINNATI MUNI AIRPORT LUNKEN FIELD	CINCINNATI, OH
LWB	AEA	GREENBRIER VALLEY	LEWISBURG, WV
LWM	ANE	LAWRENCE MUNI	LAWRENCE, MA
LWS	ANM	LEWISTON-NEZ PERCE COUNTY	LEWISTON, ID
LYH	AEA	LYNCHBURG REGIONAL/PRESTON GLENN FLD	LYNCHBURG, VA
LZU	ASO	GWINNETT COUNTY - BRISCOE FIELD	LAWRENCEVILLE, GA
MCN	ASO	MIDDLE GEORGIA REGIONAL	MACON, GA
MDH	AGL	SOUTHERN ILLINOIS	CARBONDALE/MURPHYSBORO, IL
MEI	ASO	KEY FIELD	MERIDIAN, MS
MFE	ASW	MC ALLEN MILLER INTL	MC ALLEN, TX
MFR	ANM	ROGUE VALLEY INTERNATIONAL - MEDFORD	MEDFORD, OR
MGW	AEA	MORGANTOWN MUNI-WALTER L. BILL HART FLD	MORGANTOWN, WV
MHK	ACE	MANHATTAN RGNL	MANHATTAN, KS
MHR	AWP	SACRAMENTO MATHER	SACRAMENTO, CA
MIE	AGL	DELAWARE COUNTY - JOHNSON FIELD	MUNCIE, IN
MKK	AWP	MOLOKAI	KAUNAKAKAI, HI
MKL	ASO	MC KELLAR-SIPES REGIONAL	JACKSON, TN
MLB	ASO	MELBOURNE INTL	MELBOURNE, FL
MOD	AWP	MODESTO CITY-CO-HARRY SHAM FLD	MODESTO, CA
MOT	AGL	MINOT INTL	MINOT, ND
MQY	ASO	SMYRNA	SMYRNA, TN
MSO	ANM	MISSOULA INTERNATIONAL	MISSOULA, MT
MTN	AEA	MARTIN STATE	BALTIMORE, MD
MVY	ANE	MARTHAS VINEYARD	VINEYARD HAVEN, MA
MWA	AGL	WILLIAMSON COUNTY REGIONAL	MARION, IL
MWC	AGL	LAWRENCE J TIMMERMAN	MILWAUKEE, WI
NQA	ASO	MILLINGTON MUNI	MILLINGTON, TN
OGD	ANM	OGDEN-HINCKLEY	OGDEN, UT
OJC	ACE	JOHNSON COUNTY EXECUTIVE	OLATHE, KS
OLM	ANM	OLYMPIA	OLYMPIA, WA
OPF	ASO	OPA LOCKA	MIAMI, FL
ORH	ANE	WORCESTER REGIONAL	WORCESTER, MA
OSH	AGL	WITTMAN REGIONAL	OSHKOSH, WI
OSU	AGL	OHIO STATE UNIVERSITY	COLUMBUS, OH
OUN	ASW	UNIVERSITY OF OKLAHOMA WESTHEIMER	NORMAN, OK
OWB	ASO	OWENSBORO-DAVISS COUNTY	OWENSBORO, KY
OWD	ANE	NORWOOD MEMORIAL	NORWOOD, MA
OXC	ANE	WATERBURY-OXFORD	OXFORD, CT
OXR	AWP	OXNARD	OXNARD, CA
PAH	ASO	BARKLEY REGIONAL	PADUCAH, KY
PDT	ANM	EASTERN OREGON REGIONAL AT PENDLETON	PENDLETON, OR
PFN	ASO	PANAMA CITY-BAY CO INTL	PANAMA CITY, FL
PIH	ANM	POCATELLO REGIONAL	POCATELLO, ID

Table B-5.
List of FAA Contract Towers

Location Identifier	Region	Airport Name	City, State
PKB	AEA	WOOD COUNTY AIRPORT GILL ROBB WILSON FLD	PARKERSBURG, WV
PMD	AWP	PALMDALE PRODN FLT/TEST INSTLN AF PLANT 42	PALMDALE, CA
PMP	ASO	POMPANO BEACH AIRPARK	POMPANO BEACH, FL
PWA	ASW	WILEY POST	OKLAHOMA CITY, OK
RAL	AWP	RIVERSIDE MUNI	RIVERSIDE, CA
RAP	AGL	RAPID CITY REGIONAL	RAPID CITY, SD
RBD	ASW	DALLAS EXECUTIVE	DALLAS, TX
RDD	AWP	REDDING MUNI	REDDING, CA
RDM	ANM	ROBERTS FIELD	REDMOND, OR
RNT	ANM	RENTON MUNI	RENTON, WA
RYN	AWP	RYAN FIELD	TUCSON, AZ
RYY	ASO	COBB COUNTY-MC COLLUM FIELD	ATLANTA, GA
SAC	AWP	SACRAMENTO EXECUTIVE	SACRAMENTO, CA
SAF	ASW	SANTA FE MUNI	SANTA FE, NM
SAW	AGL	SAWYER INTERNATIONAL	MARQUETTE, MI
SBP	AWP	SAN LUIS COUNTY REGIONAL	SAN LUIS OBISPO, CA
SBY	AEA	SALISBURY-OCEAN CITY WICOMICO REGIONAL	SALISBURY, MD
SDM	AWP	BROWN FIELD MUNI	SAN DIEGO, CA
SFF	ANM	FELTS FIELD	SPOKANE, WA
SGJ	ASO	ST AUGUSTINE	ST AUGUSTINE, FL
SGR	ASW	SUGAR LAND RGNL	HOUSTON, TX
SIG	ASO	FERNANDO LUIS RIBAS DOMINICCI	SAN JUAN, PR
SJT	ASW	SAN ANGELO REGIONAL/MATHIS FIELD	SAN ANGELO, TX
SLE	ANM	MCNARY FLD	SALEM, OR
SLN	ACE	SALINA MUNI	SALINA, KS
SMX	AWP	SANTA MARIA PUB/CAPT G ALLAN HANCOCK FLD	SANTA MARIA, CA
SNS	AWP	SALINAS MUNI	SALINAS, CA
SPG	ASO	ALBERT WHITTED	ST PETERSBURG, FL
SQL	AWP	SAN CARLOS	SAN CARLOS, CA
SSF	ASW	STINSON MUNI	SAN ANTONIO, TX
STJ	ACE	ROSECRANS MEMORIAL	ST JOSEPH, MO
STX	ASO	HENRY E ROHLSSEN	CHRISTIANSTED, VI
SUA	ASO	WITHAM FIELD	STUART, FL
SUN	ANM	FRIEDMAN MEMORIAL	HAILEY, ID
SWF	AEA	STEWART INT'L	NEWBURGH, NY
SWO	ASW	STILLWATER RGNL	STILLWATER, OK
TCL	ASO	TUSCALOOSA MUNI	TUSCALOOSA, AL
TIW	ANM	TACOMA NARROWS	TACOMA, WA
TIX	ASO	SPACE COAST REGIONAL	TITUSVILLE, FL
TKI	ASW	COLLLIN COUNTY REGIONAL	MC KINNEY, TX
TOP	ACE	PHILIP BILLARD MUNI	TOPEKA, KS
TTD	ANM	PORTLAND-TROUTDALE	PORTLAND, OR
TTN	AEA	TRENTON MERCER	TRENTON, NJ
TUP	ASO	TUPELO RGNL	TUPELO, MS
TVL	AWP	LAKE TAHOE	SOUTH LAKE TAHOE, CA
TXK	ASW	TEXARKANA REGIONAL-WEBB FIELD	TEXARKANA, AR
TYR	ASW	TYLER POUNDS RGNL	TYLER, TX
TZR	AGL	BOLTON FIELD	COLUMBUS, OH
UCA	AEA	ONEIDA COUNTY	UTICA, NY
UES	AGL	WAUKESHA COUNTY	WAUKESHA, WI
UGN	AGL	WAUKEGAN REGIONAL	CHICAGO/WAUKEGAN, IL
VBG	AWP	VANDENBERG AFB	SANTA BARBARA, CA
VCV	AWP	SOUTHERN CALIFORNIA LOGISTICS	VICTORVILLE, CA

Table B-5.
List of FAA Contract Towers

Location		Airport Name	City, State
Identifier	Region		
VLD	ASO	VALDOSTA RGNL	VALDOSTA, GA
VQQ	ASO	CECIL FIELD	JACKSONVILLE, FL
WDG	ASW	ENID WOODRING RGNL	ENID, OK
WHP	AWP	WHITEMAN	LOS ANGELES, CA
WJF	AWP	GENERAL WM J FOX AIRFIELD	LANCASTER, CA
XNA	ASW	NORTHWEST ARKANSAS RGNL	FAYETTEVILLE/SPRINGDALE/, AR
YKM	ANM	YAKIMA AIR TERMINAL/MCALLISTER FIELD	YAKIMA, WA

Listed 219 Airports.