

Terminal Area Forecast Summary



**Fiscal Years
2006-2025**



March 2007

**U.S. Department of Transportation
Federal Aviation Administration
FAA-APO-07-1**

Preface

This publication provides aviation data users with summary historical and forecast statistics on passenger demand and aviation activity at U.S. airports. The summary level forecasts are based on individual airport projections.

The Terminal Area Forecast (TAF) includes forecasts for active airports in the National Plan of Integrated Airport Systems (NPIAS). The Federal Aviation Administration's (FAA) Statistics and Forecast Branch, Office of Aviation Policy and Plans, develops the TAF. As its primary input, the TAF initially used the national forecasts of aviation activity contained in *FAA Aerospace Forecasts, Fiscal Years 2006-2017*. The final TAF considers the forecasts and assumptions contained in *FAA Aerospace Forecasts, Fiscal Years 2007-2020*. The tables for the national forecasts can be found at http://www.faa.gov/data_statistics/aviation/aerospace_forecasts/2007-2020/.

The TAF can be accessed from the Internet. The TAF model and TAF database are located at <http://www.apo.data.faa.gov/>. The TAF model allows users to create their own forecast scenarios. It contains a query data application that allows the public to access and print historical (1976 to 2005) and forecast (2006 to 2025) aviation activity data by individual airport, state, or FAA region.

The FAA welcomes public comment on the forecasts, as well as suggestions for improving the usefulness of the TAF.

A handwritten signature in blue ink, reading "Roger Schauffele, Jr.", is written over a horizontal line.

Roger Schauffele, Jr.
Manager, Statistics and Forecast Branch
Office of Aviation Policy and Plans

Acknowledgments

This document was prepared by the Statistics and Forecast Branch of the FAA Office of Aviation Policy and Plans under the direction of Roger Schaufele, Manager, Statistics and Forecast Branch. Daniel E. Taylor and Peter LeBoff have primary responsibility for the development of the forecasts. Fahad Ahmad provided valuable technical support. Roger Schaufele, Gabor Kovacs, and Cheryl Miner also contributed their valuable support in the development of forecasts for the 35 Operational Evolution Plan (OEP) airports.

The software support was executed under the direction of Carlton R. Wine, Manager, Information Systems Branch. Mr. Wine and his staff organize and manage the databases used to produce the forecasts, update the computer programs, and carry out the

computer operations necessary to produce the individual airport forecasts. We extend a special thanks to Damien Agostinelli, Dawn Amore, and Alice Dobrin who provided invaluable programming support for the TAF software and made accessing and analyzing this airport data so much more efficient.

Special acknowledgments are made to FAA Airports staff in the Regional and Airport District Offices for their assistance in coordinating the regional reviews, state input, and forecast recommendations. The reviews and comments of the regional offices were extremely important and useful in guiding the Statistics and Forecast Branch in making adjustments to the preliminary version of the forecasts. Their efforts have enhanced the accuracy and credibility of the final product.

Table of Contents

	Page
Preface.....	i
Acknowledgments	ii
Table of Contents	iii
Summary Historical and Forecast Highlights	1
Forecast Process	3
TAP and National Forecast Totals.....	6
National Summary Tables	
Table S-1 Enplanements at the 35 OEP Airports	9
Graph S-1 Enplanements Growth Rates for the 35 OEP Airports 2005 to 2025	10
Table S-2 Airport Operations at the 35 OEP Airports.....	11
Graph S-2 Airport Operations Growth Rates for the 35 OEP Airports 2005 to 2025	12
Table S-3 Air Traffic Control Towers and Contract Towers by Region and State.....	13
Table S-4 Ranking of Top 100 FAA Towers by Total Enplanements, FY 2005.....	14
Table S-5 Summary of Enplanements and Airport Operations at FAA Towers and Contract Towers	17
Table S-6 Commercial Airport Operations Summary by Region	18
Table S-7 Itinerant Airport Operations Summary by Region.....	19
Table S-8 Total Airport Operations Summary by Region	20
Table S-9 Instrument Operations Summary by Region	21
Table S-10 Enplanements Summary by Region	22
Table S-11 Based Aircraft Summary by Region.....	23
Appendix A: Description of Activity Measures.....	A-1
Appendix B: List of FAA Towers by Hub Size and FAA Contract Towers.....	B-1

Summary Historical and Forecast Highlights

- A total of 733.1 million passengers were enplaned at U.S. airports in 2005; FAA and Federal contract towered airports accounted for 729.3 million enplanements.
- The top 100 air carrier airports accounted for 691.7 million enplanements in 2005, or 94 percent of total U.S. enplanements.
- FAA towers handled 46.6 million operations (takeoffs and landings) in 2005, including 24.2 million commercial aircraft operations.
- FAA contract towers handled 16.4 million operations in 2005, including 1.9 million commercial operations.
- The 35 Operational Evolution Plan (OEP) airports enplaned 536.6 million passengers in 2005. These airports are projected to enplane 947.8 million passengers in 2025, a 76.6 percent increase over the forecast period (or 2.9 percent annually).
- The 30 large hub airports¹ enplaned 506.6 million passengers in 2005. These airports are projected to enplane 900.4 million passengers in 2025, a 77.8 percent increase over the 20-year period (or 2.9 percent annually).
- The 38 medium hub airports² recorded 147.3 million enplanements in 2005. These airports are projected to enplane 259.3 million passengers in 2025, a 76.1 percent increase over the 20-year period (or 2.9 percent annually).
- Atlanta (42.7 million enplanements), Chicago O'Hare (36.6 million), Los Angeles (29.4 million), Dallas/Ft. Worth (28.0 million), and Las Vegas (21.0 million) led U.S. commercial airports in passenger enplanements, accounting for 21.5 percent of enplanements at U.S. airports.
- Atlanta is projected to remain the country's busiest airport, as measured by passenger enplanements, through the forecast period with a projected 68.8 million enplaned passengers in 2025. Chicago O'Hare is projected to enplane 60.6 million passengers in 2025, followed by Los Angeles with 57.9 million enplanements.
- Enplanements at Chicago Midway, Washington Dulles, and Houston Intercontinental airports are projected to grow fastest among the 35 OEP airports. The annual growth rates at these airports are forecast to increase by 4.3, 4.2, and 3.5 percent per year, respectively, over the forecast period.
- In terms of total operations, Atlanta was the busiest U.S. airport in 2005 with 984,000 aircraft operations. Chicago O'Hare and Dallas/Ft. Worth were the second and third busiest airports with 980,000 and 740,000 operations, respectively.
- In 2025, Atlanta is expected to remain the busiest airport in the nation, as measured by total operations, with a projected 1.5

¹ Airports enplaning one percent or more of total enplanements.

² Airports enplaning 0.25 to 0.99 percent of total enplanements.

million operations. Chicago O'Hare (1.4 million operations) is projected to stay in second place with Los Angeles (1.2 million operations) moving up to third place.

- The FAA's Southern region airports enplaned more passengers than any other region with 171.1 million passengers in 2005, or 23 percent of U.S. enplanements. The Western Pacific region was second with 150.2 million enplanements, or 20 percent of the total.
- The Western Pacific region is expected to lead in passenger enplanements in 2025, reaching 284.7 million. The Southern

region is projected to drop into second place with 280.4 million enplanements.

- The Southern region led all FAA regions in the number of airport operations with 25.5 million in 2005. The Southern region is expected to remain first in 2025 with 30.5 million operations. The Western Pacific and Great Lakes regions ran second and third in airport operations in 2005 with 19.3 and 19.1 million, respectively. In 2025, the Western Pacific region is projected to remain in second place with 24.9 million operations and the Great Lakes region is projected to remain in third place with 22.3 million operations.

Forecast Process

Introduction

The Terminal Area Forecast (TAF) contains historical and forecast data for enplanements, airport operations, instrument operations, and based aircraft. The data cover the 265 FAA towered airports, 228 Federal contract tower airports, 29 terminal radar approach control facilities, and 2,873 non-FAA airports as of September 30, 2005. Data in the TAF are presented on a U.S. Government fiscal year basis (October through September).

The TAF is available on the Internet. The TAF model and TAF database are located at <http://www.apo.data.faa.gov/>. The TAF model allows users to create their own forecast scenarios. The TAF database allows public access to historical and forecast aviation activity data by individual airport, state, or FAA region. In addition, archives of the TAF from previous years are available at http://www.faa.gov/data_statistics/aviation/taf_reports/.

The TAF is prepared to assist the FAA in meeting its planning, budgeting, and staffing requirements. In addition, state aviation authorities and other aviation planners use the TAF as a basis for planning airport improvements.

This document presents a set of summary tables on airport activity statistics. The airport activity data contained in the TAF consist of the following:

- ♦ *enplanements* (sum of originating and connecting passengers) for air carriers and regionals;
- ♦ *itinerant operations* for air carriers, commuters and air taxis, general aviation (GA), and military aircraft;
- ♦ *local operations* for GA and military aircraft; and
- ♦ *instrument operations* for aircraft operations under radar control.

Data presented in the TAF show historical information from 1976 through 2005 and forecasts for 2006 to 2025.³ Appendix A provides a detailed description of the activity data elements in the TAF. Appendix B provides a list of FAA airports by hub size and a list of FAA contract towers.

Forecast Method

Aviation activity forecasts for FAA-towered and Federal contract towered airports are developed using historical relationships between airport passenger demand and/or activity measures and local and national factors that influence aviation activity. Each estimate is examined for its reasonableness and consistency by comparisons with historical trends of airport activity. If forecasts deviate from their expected trend, FAA uses other statistical techniques to reforecast the series. Other methods may include use of regression analysis and the use of growth rates developed separately from the TAF. The TAF may incorporate estimates prepared by local authorities and/or recent FAA-approved airport master plan forecasts, when FAA staff concludes that the methods used to develop these forecasts are acceptable.

³ Operations data for FAA towers and Federal contract towers for 2006 are actual.

In addition, the 35 airports in FAA's Operational Evolution Plan (OEP) as well as Metropolitan Oakland International (OAK) received a more in-depth review by FAA economists. The analyses of these hub city airports include additional consideration for the effect of local economic variables (such as income and employment) and the growth of originating and connecting traffic as well as the price of flying from that airport. The hub forecasts also include assumptions regarding the seating capacity and load factors for commercial aircraft operating out of the airport. The volatility in aviation activity necessitated increased efforts to develop the near-term forecasts for the large hub airports. These efforts included the use of airport authority statistics to estimate baseline passenger levels; the use of future Official Airline Guide (OAG) schedules to project near-term departures and seats; and the use of month-over-month trends in enplanements per departure to project near-term enplanement and activity levels.

The TAF assumes an unconstrained demand for aviation services based upon local and national economic conditions as well as conditions within the aviation industry. In other words, an airport's forecast is developed independent of the ability of the airport and the air traffic control system to furnish the capacity required to meet demand. However, if the airport historically functions under constrained conditions, the FAA forecast may reflect those constraints since they are embedded in historical data. In statistical terms, the relationships between economic growth data and data representing growth in aviation activity reflect those constraints.

Because military operations forecasts have national security implications, the Department of Defense (DOD) provides only limited information on future aviation activity.

Hence, the TAF projects military activity at its present level except when FAA has specific knowledge of a change. For instance, DOD may announce a base closing or may shift an Air Force wing from one base to another.

For all FAA and Federal contract towered airports and non-FAA facilities passenger service, the TAF corresponds to prevailing local and national trends. For non-FAA facilities, which rely solely on Form 5010 data for aviation activity levels, operations levels are held constant unless otherwise specified by a local or regional FAA official.

Forecast Review Process

Initially, FAA headquarters staff and management review FAA and Federal contract tower airport forecasts. These preliminary estimates are then submitted to FAA regional and district offices for review. Suggested changes made by the FAA regional staff are reviewed and, if determined reasonable by APO staff economists, are incorporated into the TAF. Significant increases in commercial activity forecasts are normally incorporated into the TAF only where APO receives verifiable evidence of a firm commitment by an air carrier or regional airline to initiate new service.

Summary statistics presented in the TAF differ marginally from the national totals contained in *FAA Aerospace Forecasts, Fiscal Years 2007-2020*. Reasons for the differences are threefold. First, the TAF forecast methods rely, in part, upon an airport's historical national share of aviation activity, but also consider airport specific trends. In particular, large hub airport forecasts are based, in part, on the projected local economic activity and airport specific airline fares. Second,

the TAF includes facilities not serviced by the FAA in its totals. These facilities make up a large share of the general aviation operations activity shown in the summary tables. Finally, individual forecasts are not scaled to force aggregates to equal national totals.

Data Sources

The development of the TAF begins with an update of the latest historical enplanement, operation, and based aircraft statistics, using information derived from several sources. FAA's National Flight Data Center provides general airport information such as the airport name, location, and location identifier. Airport operations and instrument (radar assisted) operations data for airports with FAA and Federal contract air traffic control services are reported by FAA air traffic and Federal contract tower staff. Operations at non-FAA airports are taken from FAA Form 5010 reports on aviation activity at the

airport as estimated by FAA inspectors or information provided by airport managers, state aviation activity surveys, and other sources.

U.S. domestic and international (U.S. and foreign flag carriers) enplanements are derived from the Department of Transportation's T-100 database. Regional enplanements are derived from DOT T-100 and 298-C data.⁴

Based aircraft data are collected by FAA inspectors, airport managers, and state aviation officials and reported on FAA Form 5010. These data show numbers of aircraft, mostly general aviation aircraft, permanently based at an airport.

The TAF contains actual historical operations data through fiscal year 2006 for FAA and Federal contract tower airports. Enplanement data for fiscal year 2006 are estimates. Appendix A contains a detailed description of each TAF data element.

⁴ In October 2002, DOT began collecting data for all airlines using the T-100 format. This change provides more detail on regional airlines, who previously reported on Form 298-C.

TAF and National Forecast Totals

Recovery of Commercial Activity

The dual impact of the 2001 recession and terrorist events of September 11, 2001 put the airline industry into a tailspin from which it is still pulling out. The following table shows the year each of the 35 OEP airports is projected to return to and maintain a level of commercial operations above that in 2000.

**35 OEP Airports by Year
Level of Commercial Operations
Returns to 2000 Level**

Airport	Year	Airport	Year
FLL	2001	MCO	2005
LAS	2001	DTW	2007
MEM	2001	EWR	2007
MDW	2002	BWI	2008
MSP	2002	PHX	2008
SLC	2002	IAD	2011
LGA	2003	TPA	2011
ORD	2003	LAX	2012
ATL	2004	DFW	2014
CLT	2004	SFO	2014
DCA	2004	PDX	2015
DEN	2004	CVG	2016
IAH	2004	MIA	2016
PHL	2004	CLE	2017
SAN	2004	BOS	2018
HNL	2005	SEA	2020
JFK	2005	PIT	after 2025
		STL	after 2025

FAA has designated the OEP airports as those airports most important to the commercial capacity of the national airspace system. The aviation industry downturn in the early years of this decade has resulted in structural changes that have substantially affected several large hubs. For instance, US Airways and American Airlines have pulled down their respective hubs in Pittsburgh and St. Louis. Fifteen of the OEP airports are projected to return to their 2000 level after 2007. In two cases, Pittsburgh and St. Louis, commercial operations are not expected to return to their 2000 level during the forecast period.

National Forecast Trends

Trends at individual airports reflect to varying degrees national aviation trends as well as the dynamics at individual airports. The national forecasts for FAA towered airports reflected in *FAA Aerospace Forecasts, Fiscal Years 2007 – 2020* show aircraft operations growing at an average annual rate of 2.0 percent over the 14-year forecast period. Average annual growth rates for this period by user group are as follows: air carrier, 3.3 percent; air taxi/commuter, 1.0 percent; and general aviation, 1.8 percent. The projected average annual rate of increase for enplanements on U.S. mainline air carriers from the national forecast is 3.7 percent over the 14-year forecast period. Regional enplanements are projected to increase 3.1 percent annually.

Trends by Region

In fiscal year 2005, the FAA served 265 towers and 228 Federal contract towers. California had the most FAA towers with 33, followed by Texas with 19 and Florida with 18. Regions with the most FAA towers were Southern with 51, Great Lakes with 48, and Western Pacific with 47. Table S-3 presents the number of FAA and Federal contract towers by region and state.

Tables S-6 through S-11 summarize airport operations, instrument operations, enplanements, and based aircraft by region from 2001 through 2025. The Southern (25.5 million operations), Western Pacific (19.3 million), and Great Lakes (19.0 million) regions ranked as the top three FAA regions in airport operations in 2005. Operations for all TAF airports totaled 116.3 million. The Northwest Mountain and Western Pacific regions are projected to be the fastest growing FAA regions from 2005 to 2025 in terms of airport operations, increasing 31 percent and 29 percent, respectively.

The Southern region led FAA regions in passengers enplaned with 171.1 million in 2005, followed by the Western Pacific region with 150.2 million passengers. Enplanements in the Western Pacific region are projected to increase the most in percentage terms increasing 90 percent from 2005 to 2025. The next two regions with the fastest projected increase in enplanements are the Eastern (78 percent) and Northwest Mountain (76 percent).

In 2005, there was a national total of 199,800 based aircraft. Western Pacific (37,900 aircraft), Southern (36,200), and Great Lakes (33,100) ranked as the top three FAA regions.

Large, Medium, and Small Hubs

Table S-5 presents passenger enplanements and airport operations by hub size. An airport qualifies as a **large** hub with one percent or more of total U.S. passenger enplanements. A **medium** hub airport enplanes from 0.25 to 0.99 percent of total U.S. passenger enplanements while **small** and **non-hub** airports enplane from 0.05 to 0.249 percent and less than 0.05 percent, respectively. Appendix B contains a list of hub airports classified by size (large, medium, small, and non-hub) as well as a list of Federal contract towers.

The 30 large hub airports enplaned 506.6 million passengers in 2005 while the 38 medium and 66 small hub airports enplaned 147.3 and 55.5 million passengers, respectively. The 359 non-hub airports enplaned 19.9 million passengers. Enplanements at large hubs are expected to increase at an annual rate of 2.9 percent over the 2005 to 2025 forecast period. Medium and small hub airports are forecast to increase 2.9 percent and 2.5 percent annually, respectively, during the forecast period.

Operations at large hub airports totaled 14.5 million compared to levels of 8.0 and 8.1 million at medium and small hub airports, respectively. Operations at large hub airports are forecast to increase at an annual rate of 2.1 percent from 2005 to 2025, growing to 21.8 million. Operations at the medium hubs are forecast to rise at an annual rate of 1.9 percent from 2005 to 2025; aircraft operations at small hub airports are forecast to grow only 1.0 percent per year.

Non-hub airports accounted for 32.5 million operations or 52 percent of total operations at FAA and Federal contract towers. General aviation aircraft operations accounted for the

majority of operations at these smaller airports.

35 OEP Airports

Table S-1 presents enplanement forecast summaries for the 35 OEP airports. Atlanta was the busiest airport in 2005 (42.7 million enplanements), followed by Chicago O'Hare (36.6 million), Los Angeles (29.4 million), and Dallas/Ft. Worth (28.0 million). Los Angeles and Chicago O'Hare are forecast to have the strongest growth in enplanements among the top four airports, increasing at annual rates of 3.5 percent and 2.6 percent, respectively, over the 2005 to 2025 forecast period. Atlanta and Dallas/Ft. Worth are forecast to increase at an annual rate of 2.4 percent. Graph S-1 shows relative enplanements growth over the next 20 years. The five airports with the fastest projected increase are Chicago Midway, Washington Dulles, Houston Intercontinental, Baltimore/Washington, and Las Vegas.

Chicago Midway, Washington Dulles, and Baltimore/Washington are projected to make the largest upward movements in ranking of enplanements. Chicago Midway moves up from 30th to 21st, Washington Dulles moves

up from 19th to 12th, and Baltimore/Washington moves up from 25th to 22nd position. Hub airports with the largest drop in hub rankings are Cincinnati (from 22nd to 28th), Orlando (from 12th to 16th), and Detroit (from 11th to 15th).

Table S-2 presents operations forecast summaries for the 35 OEP airports. In 2005, FAA controllers at Atlanta handled 984,000 landings and takeoffs, a workload slightly higher than Chicago O'Hare, which totaled 980,000 operations. The next busiest airports were Dallas/Ft. Worth and Los Angeles with 740,000 and 654,000 airport operations, respectively.

In 2025, Atlanta is projected to have the largest number of operations with 1.5 million followed by Chicago O'Hare with 1.4 million. Los Angeles is projected to move into 3rd place in 2025 with 1.2 million operations.

Graph S-2 shows that the three airports projected to grow the fastest in operations are John F. Kennedy, Houston Intercontinental, and Los Angeles. Philadelphia is expected to move into the list of the top 10 busiest airports; Minneapolis is expected to drop out of the top 10 ranking.

Table S-1.
Enplanements At The 35 OEP Airports
(In Thousands)

Loc ID	Reg	Airport Name	2005*					Airport Ranking	
			2005	Percent	2008	2010	2025	2005	2025
ATL	ASO	HARTSFIELD - JACKSON ATLANTA INTL	42,691	7.95	41,191	48,954	68,764	1	1
ORD	AGL	CHICAGO OHARE INTL P	36,594	6.81	37,159	41,522	60,608	2	2
LAX	AWP	LOS ANGELES INTL	29,350	5.48	29,529	34,712	57,901	3	3
DFW	ASW	DALLAS/FORT WORTH INTERNATIONAL	27,980	5.21	28,604	31,430	45,341	4	4
LAS	AWP	MC CARRAN INTL	21,020	3.91	22,112	25,556	41,532	5	5
DEN	ANM	DENVER INTL	20,675	3.85	22,690	26,721	40,537	6	6
PHX	AWP	PHOENIX SKY HARBOR INTL	20,127	3.75	20,723	23,591	38,668	7	7
JFK	AEA	JOHN F KENNEDY INTL	20,030	3.73	20,658	24,574	38,381	8	8
IAH	ASW	GEORGE BUSH INTERCONTINENTAL/HOUSTON	18,636	3.47	20,198	23,104	37,126	9	9
MSP	AGL	MINNEAPOLIS-ST PAUL INTL/WOLD-CHAMBERLAIN/	18,095	3.37	17,185	19,513	32,604	10	10
DTW	AGL	DETROIT METROPOLITAN WAYNE COUNTY	17,894	3.29	17,599	20,013	29,441	11	15
MCO	ASO	ORLANDO INTL	16,413	3.05	16,897	18,382	29,236	12	16
EWK	AEA	NEWARK LIBERTY INTL	16,185	3.01	17,750	20,127	30,503	13	11
SFO	AWP	SAN FRANCISCO INTERNATIONAL	15,922	2.96	16,208	18,683	30,216	14	14
PHL	AEA	PHILADELPHIA INTL	15,481	2.88	15,232	18,361	30,382	15	13
MIA	ASO	MIAMI INTL	15,054	2.80	15,574	17,011	23,997	16	18
SEA	ANM	SEATTLE-TACOMA INTL	14,253	2.65	14,580	16,185	23,270	17	19
CLT	ASO	CHARLOTTE/DOUGLAS INTL	13,928	2.59	14,433	16,679	24,534	18	17
IAD	AEA	WASHINGTON DULLES INTERNATIONAL	13,341	2.48	10,879	13,419	30,433	19	12
BOS	ANE	GENERAL EDWARD LAWRENCE LOGAN INTL	13,193	2.45	13,584	15,287	21,477	20	20
LGA	AEA	LA GUARDIA	13,079	2.43	13,344	14,430	17,494	21	24
CVG	ASO	CINCINNATI/NORTHERN KENTUCKY INTERNATIONAL	11,579	2.15	8,657	9,679	15,370	22	28
FLL	ASO	FORT LAUDERDALE/HOLLYWOOD INTL	10,982	2.04	10,344	11,570	17,806	23	23
SLC	ANM	SALT LAKE CITY INTL	10,315	1.92	10,357	11,617	16,547	24	26
BWI	AEA	BALTIMORE/WASHINGTON INTL THURGOOD MARSHAL	9,714	1.81	10,100	11,571	19,283	25	22
HNL	AWP	HONOLULU INTL	9,630	1.79	9,638	10,838	16,086	26	27
TPA	ASO	TAMPA INTL	9,223	1.71	9,548	10,641	16,583	27	25
SAN	AWP	SAN DIEGO INTL	8,533	1.59	8,657	9,891	14,946	28	29
DCA	AEA	RONALD REAGAN WASHINGTON NATIONAL	8,461	1.57	8,967	9,811	11,978	29	30
MDW	AGL	CHICAGO MIDWAY INTL	8,429	1.57	8,942	11,134	19,406	30	21
STL	ACE	LAMBERT-ST LOUIS INTL	6,744	1.25	7,143	8,023	11,650	31	31
PDX	ANM	PORTLAND INTL	6,711	1.25	6,924	7,701	11,525	32	32
MEM	ASO	MEMPHIS INTL	5,648	1.05	5,512	5,973	7,561	33	34
CLE	AGL	CLEVELAND-HOPKINS INTL	5,554	1.03	5,581	6,467	10,409	34	33
PIT	AEA	PITTSBURGH INTERNATIONAL	5,360	0.99	4,935	5,296	6,190	35	35
Totals			536,584	99.82	541,390	610,476	947,765		

*Percent of total US enplanements.

**Graph S-1. Enplanements Growth Rates for the 35
OEP Airports - 2005 to 2025**

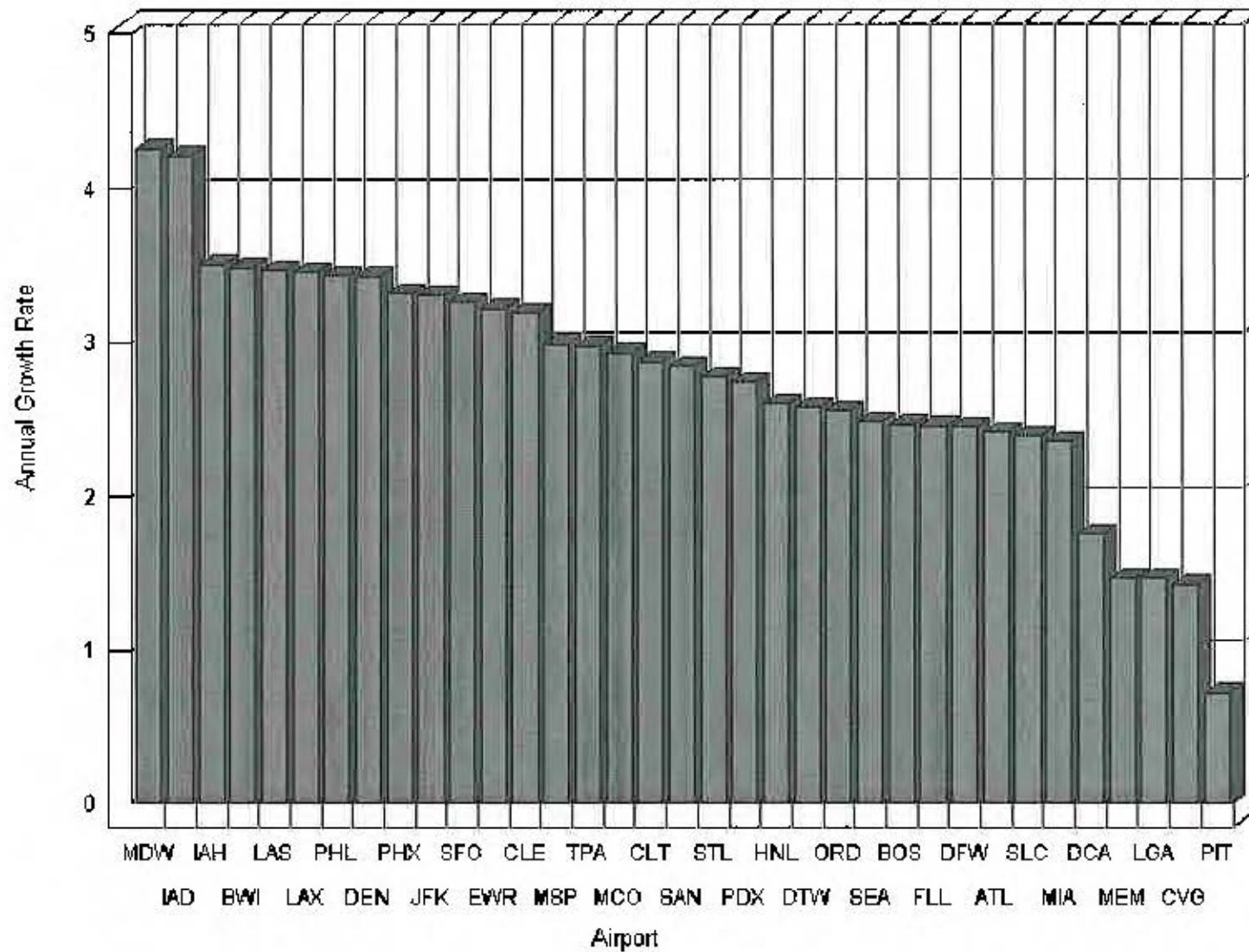


Table S-2.
Airport Operations At The 35 OEP Airports
(In Thousands)

Loc ID	Reg	Airport Name	2005*					Airport Ranking	
			2005	Percent	2006	2010	2025	2005	2025
ATL	ASO	HARTSFIELD - JACKSON ATLANTA INTL	984	0.84	963	1,091	1,462	1	1
ORD	AGL	CHICAGO OHARE INTL P	980	0.84	962	1,046	1,398	2	2
DFW	ASW	DALLAS/FORT WORTH INTERNATIONAL	740	0.63	704	773	1,051	3	4
LAX	AWP	LOS ANGELES INTL	654	0.56	653	753	1,153	4	3
LAS	AWP	MC CARRAN INTL	605	0.52	619	687	1,020	5	5
IAD	AEA	WASHINGTON DULLES INTERNATIONAL	588	0.50	435	495	899	6	9
DEN	ANM	DENVER INTL	566	0.48	601	693	981	7	7
PHX	AWP	PHOENIX SKY HARBOR INTL	560	0.48	552	600	926	8	8
IAH	ASW	GEORGE BUSH INTERCONTINENTAL/HOUSTON	552	0.47	587	675	1,011	9	6
MSP	AGL	MINNEAPOLIS-ST PAUL INTL/WOLD-CHAMBERLAIN/	544	0.46	482	527	825	10	11
PHL	AEA	PHILADELPHIA INTL	535	0.45	520	583	881	11	10
DTW	AGL	DETROIT METROPOLITAN WAYNE COUNTY	532	0.45	488	535	731	12	13
CVG	ASO	CINCINNATI/NORTHERN KENTUCKY INTERNATIONAL	519	0.44	367	400	592	13	17
CLT	ASO	CHARLOTTE/DOUGLAS INTL	518	0.44	507	568	768	14	12
SLC	ANM	SALT LAKE CITY INTL	447	0.38	428	465	583	15	16
EWR	AEA	NEWARK LIBERTY INTL	441	0.37	447	497	701	16	14
BOS	ANE	GENERAL EDWARD LAWRENCE LOGAN INTL	429	0.36	412	455	557	17	19
LGA	AEA	LA GUARDIA	408	0.35	405	421	421	18	28
MEM	ASO	MEMPHIS INTL	396	0.34	391	422	549	19	21
MIA	ASO	MIAMI INTL	387	0.33	384	411	546	20	22
JFK	AEA	JOHN F KENNEDY INTL	360	0.30	376	469	680	21	15
MCO	ASO	ORLANDO INTL	358	0.30	360	377	556	22	20
SFO	AWP	SAN FRANCISCO INTERNATIONAL	351	0.30	358	397	584	23	18
SEA	ANM	SEATTLE-TACOMA INTL	347	0.29	339	374	501	24	24
FLL	ASO	FORT LAUDERDALE/HOLLYWOOD INTL	336	0.28	300	327	457	25	27
HNL	AWP	HONOLULU INTL	335	0.28	318	372	468	26	26
BWI	AEA	BALTIMORE/WASHINGTON INTL THURGOOD MARSHAL	313	0.26	305	333	495	27	25
MDW	AGL	CHICAGO MIDWAY INTL	302	0.25	296	341	523	28	23
STL	AGE	LAMBERT-ST LOUIS INTL	297	0.25	288	306	385	29	31
PIT	AEA	PITTSBURGH INTERNATIONAL	278	0.23	238	237	266	30	35
DCA	AEA	RONALD REAGAN WASHINGTON NATIONAL	277	0.23	278	291	304	31	34
TPA	ASO	TAMPA INTL	269	0.23	258	270	376	32	32
CLE	AGL	CLEVELAND-HOPKINS INTL	262	0.22	251	277	388	33	30
PDX	ANM	PORTLAND INTL	261	0.22	261	285	393	34	29
SAN	AWP	SAN DIEGO INTL	225	0.19	232	256	356	35	33
Totals			15,968	13.62	15,368	17,009	23,775		

*Percent of total US operations.

**Graph S-2. Airport Operations Growth Rates for
the 35 OEP Airports - 2005 to 2025**

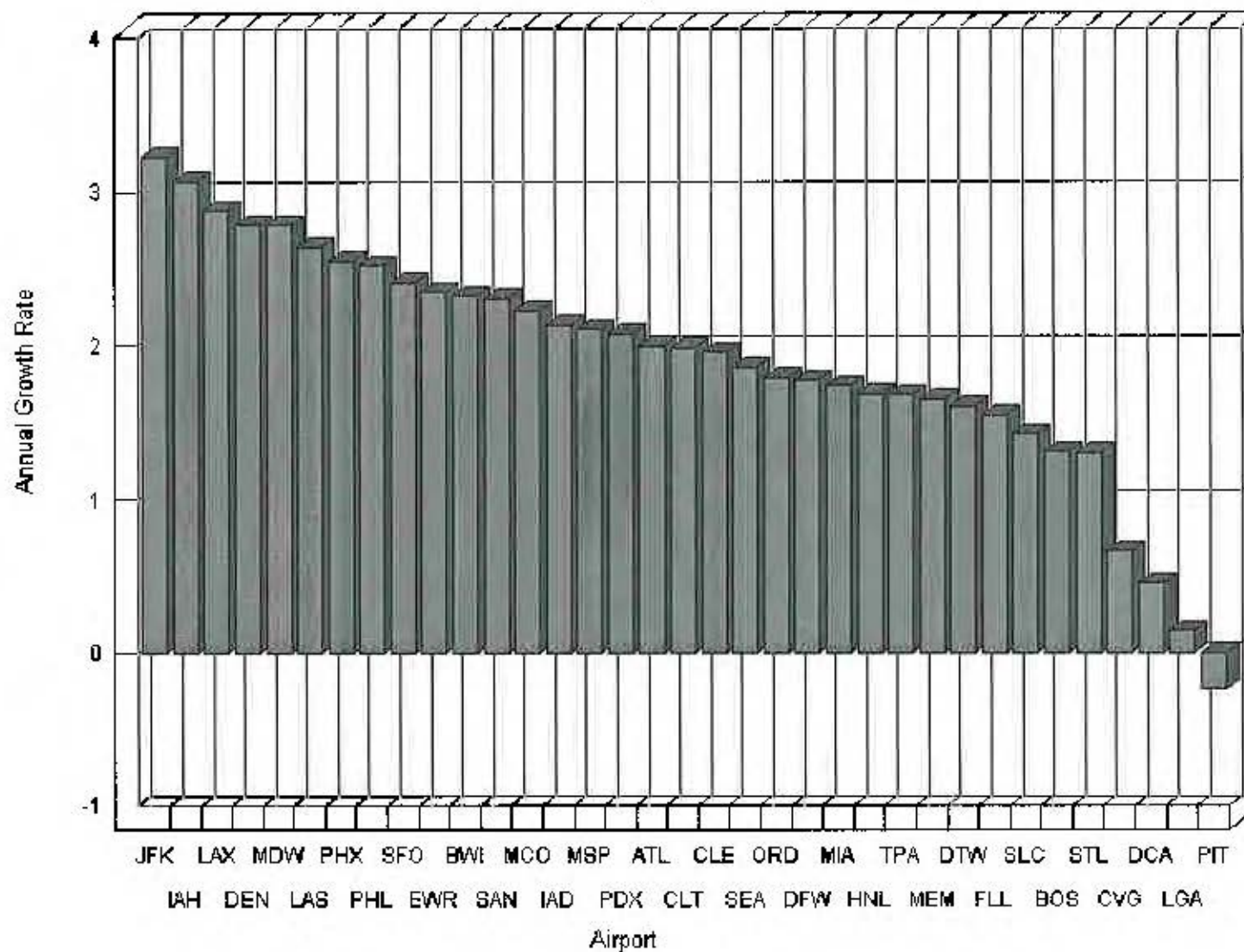


Table S-3.
Air Traffic Control Towers and Contract
Towers by Region and State
 As of September 30, 2005

Region/State	FAA Towers	Contract Towers
Alaska		
Alaska	4	4
Regional Total	4	4
Central		
Iowa	4	1
Kansas	1	8
Missouri	5	4
Nebraska	2	1
Regional Total	12	14
Eastern		
Delaware	1	0
District of Columbia	2	0
Maryland	2	3
New Jersey	5	1
New York	12	4
Pennsylvania	9	4
Virginia	5	2
West Virginia	3	4
Regional Total	39	18
Great Lakes		
Illinois	11	6
Indiana	6	4
Michigan	11	4
Minnesota	6	2
North Dakota	3	1
Ohio	7	5
South Dakota	1	1
Wisconsin	3	8
Regional Total	48	31
New England		
Connecticut	1	8
Maine	2	0
Massachusetts	3	8
New Hampshire	1	2
Rhode Island	1	0
Vermont	1	0
Regional Total	9	18

Region/State	FAA Towers	Contract Towers
Northwest Mountain		
Colorado	6	2
Idaho	2	4
Montana	3	3
Oregon	3	6
Utah	1	1
Washington	6	7
Wyoming	1	2
Regional Total	22	25
Southern		
Alabama	4	3
Florida	18	20
Georgia	5	7
Kentucky	4	2
Mississippi	2	5
North Carolina	6	5
Puerto Rico	1	1
South Carolina	5	4
Tennessee	5	3
Virgin Islands	1	1
Regional Total	51	51
Southwest		
Arkansas	2	5
Louisiana	7	5
New Mexico	2	3
Oklahoma	3	6
Texas	19	14
Regional Total	33	33
Western Pacific		
American Samoa	1	0
Arizona	7	7
California	33	21
Guam	0	1
Hawaii	3	4
Mariana Islands	0	1
Nevada	3	2
Regional Total	47	36
Grand Total	265	228

Table S-4.
Ranking of Top 100 FAA Towers by Total Enplanements, FY 2005

Rank	City	State	Location Identifier	Enplaned* Passengers	Percent** of Total	Cumulative Enplanements	Cumulative Percentage	Commercial*** Operations	Cumulative Operations
1	ATLANTA	GA	ATL	42,690,613	5.82	42,690,613	5.82	971,485	971,485
2	CHICAGO	IL	ORD	36,593,872	4.99	79,284,485	10.81	954,806	1,926,291
3	LOS ANGELES	CA	LAX	29,350,001	4.00	108,634,486	14.81	636,494	2,562,785
4	DALLAS-FORT WORTH	TX	DFW	27,960,344	3.81	136,594,830	18.63	725,664	3,288,449
5	LAS VEGAS	NV	LAS	21,020,088	2.86	157,614,918	21.49	535,442	3,823,891
6	DENVER	CO	DEN	20,675,380	2.82	178,290,298	24.31	555,399	4,379,290
7	PHOENIX	AZ	PHX	20,128,609	2.74	198,418,907	27.06	502,682	4,881,972
8	NEW YORK	NY	JFK	20,029,770	2.73	218,448,677	29.79	352,620	5,234,592
9	HOUSTON	TX	IAH	18,636,208	2.54	237,082,885	32.33	534,901	5,769,493
10	MINNEAPOLIS	MN	MSP	18,094,570	2.46	255,177,455	34.80	508,695	6,278,188
11	DETROIT	MI	DTW	17,693,981	2.41	272,871,436	37.21	516,809	6,794,997
12	ORLANDO	FL	MCO	16,413,194	2.23	289,284,630	39.45	333,509	7,128,506
13	NEWARK	NJ	EWK	16,184,658	2.20	305,469,288	41.66	426,632	7,555,138
14	SAN FRANCISCO	CA	SFO	15,921,977	2.17	321,391,265	43.83	328,378	7,883,516
15	PHILADELPHIA	PA	PHL	15,480,580	2.11	336,871,845	45.94	507,026	8,390,542
16	MIAMI	FL	MIA	15,053,706	2.05	351,925,551	48.00	359,418	8,749,960
17	SEATTLE	WA	SEA	14,252,817	1.94	366,178,368	49.94	343,821	9,093,781
18	CHARLOTTE	NC	CLT	13,927,662	1.89	380,106,030	51.84	480,783	9,574,564
19	WASHINGTON	DC	IAD	13,340,893	1.81	393,446,913	53.66	510,697	10,085,261
20	BOSTON	MA	BOS	13,192,685	1.79	406,639,598	55.46	389,308	10,474,570
21	NEW YORK	NY	LGA	13,078,853	1.78	419,718,451	57.24	397,661	10,872,231
22	COVINGTON	KY	CVG	11,578,681	1.57	431,297,132	58.82	510,719	11,382,950
23	FORT LAUDERDALE	FL	FLL	10,981,895	1.49	442,259,027	60.32	263,804	11,646,754
24	SALT LAKE CITY	UT	SLC	10,314,823	1.40	452,573,850	61.73	369,222	12,025,976
25	BALTIMORE	MD	BWI	9,714,300	1.32	462,288,150	63.05	273,435	12,299,411
26	HONOLULU	HI	HNL	9,629,674	1.31	471,917,824	64.36	250,790	12,550,191
27	TAMPA	FL	TPA	9,222,541	1.25	481,140,365	65.62	226,146	12,776,337
28	SAN DIEGO	CA	SAN	8,533,095	1.16	489,673,460	66.79	204,069	12,980,406
29	WASHINGTON	DC	DCA	8,461,237	1.15	498,134,697	67.94	274,038	13,254,444
30	CHICAGO	IL	MDW	8,429,395	1.14	506,564,092	69.09	242,423	13,496,867
31	OAKLAND	CA	OAK	7,087,274	0.96	513,651,366	70.06	197,118	13,693,985
32	ST LOUIS	MO	STL	6,743,760	0.91	520,395,126	70.98	269,752	13,963,737
33	PORTLAND	OR	PDX	6,711,454	0.91	527,106,580	71.89	223,750	14,187,487
34	MEMPHIS	TN	MEM	5,648,414	0.77	532,754,994	72.66	358,258	14,545,745
35	CLEVELAND	OH	CLE	5,553,860	0.75	538,308,854	73.42	247,348	14,793,093
36	PITTSBURGH	PA	PIT	5,359,838	0.73	543,668,692	74.15	244,966	15,038,059
37	SAN JUAN	PR	SJU	5,295,227	0.72	548,963,919	74.87	166,810	15,204,869
38	SAN JOSE	CA	SJC	5,293,448	0.72	554,257,367	75.60	155,824	15,360,693
39	SACRAMENTO	CA	SMF	5,051,626	0.68	559,308,993	76.28	125,788	15,486,481
40	KANSAS CITY	MO	MCI	5,051,302	0.68	564,360,295	76.97	150,442	15,645,903

Table S-4.
Ranking of Top 100 FAA Towers by Total Enplanements, FY 2005

Rank	City	State	Location Identifier	Enplaned* Passengers	Percent** of Total	Cumulative Enplanements	Cumulative Percentage	Commercial*** Operations	Cumulative Operations
41	SANTA ANA	CA	SNA	4,789,437	0.65	569,149,732	77.63	115,758	15,761,661
42	NEW ORLEANS	LA	MSY	4,743,667	0.64	573,893,399	78.27	121,548	15,883,209
43	RALEIGH/DURHAM	NC	RDU	4,716,639	0.64	578,610,038	78.92	193,786	16,076,995
44	NASHVILLE	TN	BNA	4,482,537	0.61	583,092,575	79.53	176,903	16,253,898
45	INDIANAPOLIS	IN	IND	4,262,092	0.58	587,354,667	80.11	193,211	16,447,109
46	HOUSTON	TX	HOU	3,947,543	0.53	591,302,210	80.65	158,022	16,605,131
47	FORT MYERS	FL	RSW	3,679,735	0.50	594,981,945	81.15	78,184	16,683,315
48	WINDSOR LOCKS	CT	BDL	3,607,101	0.49	598,589,046	81.64	120,202	16,803,517
49	AUSTIN	TX	AUS	3,601,135	0.49	602,190,181	82.13	128,538	16,932,055
50	MILWAUKEE	WI	MKE	3,559,134	0.48	605,749,315	82.62	194,204	17,126,259
51	SAN ANTONIO	TX	SAT	3,518,786	0.47	609,268,101	83.10	119,058	17,245,317
52	WEST PALM BEACH	FL	PBI	3,514,060	0.47	612,782,161	83.58	99,481	17,344,798
53	ONTARIO	CA	ONT	3,406,854	0.46	616,189,015	84.04	118,478	17,463,276
54	COLUMBUS	OH	CMH	3,263,081	0.44	619,452,076	84.49	157,373	17,620,649
55	ALBUQUERQUE	NM	ABQ	3,140,910	0.42	622,592,986	84.92	124,767	17,745,416
56	DALLAS	TX	DAL	2,976,972	0.40	625,569,958	85.32	125,657	17,871,073
57	PROVIDENCE	RI	PVD	2,876,043	0.39	628,446,001	85.71	92,059	17,963,132
58	JACKSONVILLE	FL	JAX	2,856,483	0.38	631,302,484	86.10	93,820	18,056,952
59	KAHULUI	HI	OGG	2,741,062	0.37	634,043,546	86.48	136,532	18,193,484
60	BURBANK	CA	BUR	2,729,617	0.37	636,773,163	86.85	95,092	18,288,576
61	RENO	NV	RNO	2,508,071	0.34	639,281,234	87.19	91,017	18,379,593
62	BUFFALO	NY	BUF	2,395,209	0.32	641,676,443	87.52	100,773	18,480,366
63	ANCHORAGE	AK	ANC	2,208,119	0.30	643,884,562	87.82	220,125	18,700,491
64	MANCHESTER	NH	MHT	2,140,657	0.29	646,025,219	88.11	78,577	18,779,068
65	OMAHA	NE	OMA	2,021,212	0.27	648,046,431	88.39	88,250	18,867,318
66	TUCSON	AZ	TUS	2,009,007	0.27	650,055,438	88.66	71,026	18,938,344
67	NORFOLK	VA	ORF	1,945,930	0.26	652,001,368	88.93	82,477	19,020,821
68	LOUISVILLE	KY	SDF	1,833,869	0.25	653,835,237	89.18	158,823	19,179,644
69	OKLAHOMA CITY	OK	OKC	1,750,555	0.23	655,585,792	89.42	69,924	19,249,568
70	EL PASO	TX	ELP	1,617,793	0.22	657,203,585	89.64	66,467	19,316,035
71	BIRMINGHAM	AL	BHM	1,579,949	0.21	658,783,534	89.85	78,492	19,394,527
72	SPOKANE	WA	GEG	1,565,493	0.21	660,349,027	90.07	63,030	19,457,557
73	BOISE	ID	BOI	1,561,382	0.21	661,910,409	90.28	71,155	19,528,712
74	ALBANY	NY	ALB	1,537,264	0.20	663,447,673	90.49	83,417	19,612,129
75	TULSA	OK	TUL	1,532,974	0.20	664,980,647	90.70	59,338	19,671,467
76	LONG BEACH	CA	LGB	1,478,624	0.20	666,459,271	90.90	36,054	19,707,521
77	ROCHESTER	NY	ROC	1,433,077	0.19	667,892,348	91.10	78,727	19,786,248
78	RICHMOND	VA	RIC	1,399,539	0.19	669,291,887	91.29	94,074	19,880,322
79	AGANA	GU	GUM	1,387,118	0.19	670,689,005	91.48	26,194	19,906,516
80	KAILUA/KONA	HI	KOA	1,324,114	0.18	672,013,119	91.66	44,873	19,951,389

Table S-4.
Ranking of Top 100 FAA Towers by Total Enplanements, FY 2005

Rank	City	State	Location Identifier	Enplaned* Passengers	Percent** of Total	Cumulative Enplanements	Cumulative Percentage	Commercial*** Operations	Cumulative Operations
81	GREENSBORO	NC	GSO	1,314,584	0.17	673,327,703	91.84	81,725	20,033,114
82	DAYTON	OH	DAY	1,253,239	0.17	674,580,942	92.01	85,890	20,119,004
83	LITTLE ROCK	AR	LIT	1,245,255	0.16	675,826,197	92.18	65,430	20,184,434
84	SYRACUSE	NY	SYR	1,226,487	0.16	677,052,684	92.34	69,992	20,254,428
85	LIHUE	HI	LIH	1,226,391	0.16	678,279,075	92.51	80,046	20,334,472
86	CHARLESTON	SC	CHS	1,076,559	0.14	679,355,634	92.66	59,711	20,394,183
87	GRAND RAPIDS	MI	GRR	1,073,583	0.14	680,429,217	92.81	54,437	20,448,620
88	SAVANNAH	GA	SAV	1,048,997	0.14	681,478,214	92.95	46,020	20,494,640
89	ISLIP	NY	ISP	1,034,839	0.14	682,513,053	93.09	35,450	20,530,080
90	COLORADO SPRINGS	CO	COS	1,014,698	0.13	683,527,751	93.23	48,557	20,578,647
91	DES MOINES	IA	DSM	943,400	0.12	684,471,151	93.36	61,577	20,640,224
92	GREER	SC	GSP	915,480	0.12	685,386,631	93.48	55,631	20,695,855
93	KNOXVILLE	TN	TYS	907,246	0.12	686,293,879	93.61	66,316	20,762,171
94	MADISON	WI	MSN	827,458	0.11	687,121,337	93.72	41,751	20,803,922
95	ORLANDO	FL	SFB	802,576	0.10	687,923,913	93.83	11,509	20,815,431
96	PENSACOLA	FL	PNS	793,670	0.10	688,717,583	93.94	38,601	20,854,032
97	MYRTLE BEACH	SC	MYR	763,071	0.10	689,500,654	94.04	35,149	20,889,181
98	PORTLAND	ME	PWM	747,739	0.10	690,248,393	94.14	45,373	20,934,554
99	COLUMBIA	SC	CAE	728,303	0.09	690,976,696	94.24	66,426	21,000,980
100	WICHITA	KS	ICT	726,014	0.09	691,702,710	94.34	60,420	21,061,400
Total of airports 101 thru 493				37,555,629	5.149	729,258,339	99.49	5,018,661	26,080,061

*Enplanements include air carrier, commuter and international.

**Percent is of national total enplanements.

***Operations include itinerant air carrier and air taxi only.

Table S-5.
Summary of Enplanements and
Airport Operations at FAA Towers and Contract Towers

Enplanements at Towered Airports				Annual Compound Growth Rate 2005-2025
	Count	2005	2025	
Large Hubs	30	506,564,092	900,431,483	2.91
Medium Hubs	38	147,271,145	259,341,850	2.86
Small Hubs	66	55,512,796	90,619,853	2.48
Non Hub Towers	359	19,910,306	29,152,920	1.92
Total	493	729,258,339	1,279,546,106	2.85

Operations at Towered Airports				Annual Compound Growth Rate 2005-2025
	Count	2005	2025	
Large Hubs	30	14,462,470	21,794,307	2.07
Medium Hubs	38	8,008,777	11,561,342	1.85
Small Hubs	66	8,054,911	9,901,265	1.03
Non Hub Towers	359	32,532,709	41,508,865	1.22
Total	493	63,056,867	84,765,779	1.49

**Table S-6.
Commercial Airport Operations Summary by Region***

Fiscal Year	Alaska (AAL)	Central (ACE)	Eastern (AEA)	Great Lakes (AGL)	New England (ANE)	Northwest Mountain (ANM)	Southern (ASO)	Southwest (ASW)	Western Pacific (AWP)	National Total
Historical										
2001	1,183,125	1,161,780	4,533,583	4,575,320	1,341,829	2,895,342	5,829,376	3,105,872	4,791,273	29,217,500
2002	1,168,467	1,116,645	4,168,363	4,442,182	1,197,472	2,592,968	5,639,477	2,914,292	4,412,988	27,652,854
2003	1,202,998	1,043,954	4,133,268	4,524,812	1,149,610	2,814,584	5,722,828	3,079,480	4,469,834	27,941,168
2004	1,253,618	925,515	4,350,278	4,697,030	1,155,627	2,708,048	5,977,040	3,216,242	4,652,568	28,935,966
2005	925,399	902,927	4,554,980	4,724,794	1,226,401	2,740,934	6,243,378	3,085,730	4,823,977	29,228,520
Forecast										
2006	933,291	872,168	4,320,922	4,442,347	1,190,892	2,743,089	5,914,113	3,064,111	4,836,013	28,316,926
2007	941,440	896,513	4,457,408	4,513,051	1,226,440	2,830,342	6,051,237	3,151,898	4,980,308	29,048,635
2008	949,718	910,525	4,541,336	4,597,813	1,243,478	2,883,642	6,165,175	3,222,820	5,095,140	29,609,647
2009	958,127	924,843	4,625,804	4,684,787	1,260,847	2,938,689	6,293,198	3,293,506	5,214,073	30,193,854
2010	966,664	939,473	4,710,005	4,774,005	1,278,564	2,994,961	6,412,538	3,365,423	5,336,777	30,778,410
2011	975,347	954,423	4,796,652	4,861,606	1,296,627	3,048,019	6,534,557	3,433,419	5,458,403	31,359,053
2012	984,160	969,689	4,885,837	4,951,264	1,315,051	3,102,799	6,659,310	3,502,908	5,583,876	31,954,894
2013	993,112	985,305	4,977,637	5,043,140	1,333,846	3,159,064	6,786,862	3,573,866	5,713,483	32,568,294
2014	1,002,202	1,001,289	5,072,134	5,137,297	1,353,010	3,216,850	6,934,687	3,652,471	5,846,448	33,216,368
2015	1,011,445	1,017,590	5,169,433	5,233,789	1,372,562	3,275,915	7,068,308	3,731,622	5,982,707	33,863,371
2016	1,020,831	1,034,277	5,269,623	5,332,687	1,392,513	3,335,650	7,204,764	3,808,604	6,122,899	34,521,868
2017	1,030,381	1,051,337	5,372,801	5,434,017	1,412,859	3,396,698	7,344,331	3,885,698	6,267,410	35,195,512
2018	1,040,046	1,068,788	5,479,074	5,537,891	1,433,626	3,459,404	7,487,024	3,964,218	6,415,753	35,885,824
2019	1,049,882	1,086,627	5,588,564	5,644,362	1,454,808	3,523,485	7,632,929	4,044,203	6,568,377	36,593,237
2020	1,059,878	1,104,872	5,701,370	5,753,504	1,476,425	3,588,321	7,782,146	4,125,513	6,725,170	37,318,199
2021	1,070,033	1,123,535	5,817,628	5,863,284	1,498,486	3,656,613	7,934,732	4,204,175	6,884,510	38,052,996
2022	1,080,345	1,142,631	5,937,438	5,975,795	1,521,000	3,725,387	8,090,787	4,284,602	7,047,906	38,805,891
2023	1,090,825	1,162,163	6,060,940	6,091,119	1,543,980	3,795,696	8,250,373	4,366,815	7,216,067	39,577,978
2024	1,101,472	1,182,147	6,189,268	6,209,335	1,567,435	3,867,571	8,413,589	4,450,863	7,388,654	40,369,334
2025	1,112,287	1,202,591	6,319,543	6,330,522	1,591,372	3,941,034	8,580,554	4,538,807	7,568,064	41,180,774

*Includes air carrier and commuter/air taxi operations at all airports.

**Table S-7.
Itinerant Airport Operations Summary by Region***

Fiscal Year	Alaska (AAL)	Central (ACE)	Eastern (AEA)	Great Lakes (AGL)	New England (ANE)	Northwest Mountain (ANM)	Southern (ASO)	Southwest (ASW)	Western Pacific (AWP)	National Total
Historical										
2001	1,985,674	3,174,580	9,565,848	11,765,277	3,408,425	7,585,058	17,300,125	8,969,691	12,728,836	76,483,514
2002	1,942,982	3,138,590	9,091,261	11,774,947	3,247,173	7,457,782	17,016,834	8,831,415	12,349,389	74,850,373
2003	1,980,676	3,005,814	8,772,857	11,847,614	3,110,595	7,454,431	16,737,098	8,980,287	12,270,887	73,980,259
2004	2,020,769	2,882,989	9,066,093	11,772,586	3,140,890	7,494,891	17,062,151	9,050,144	12,342,583	74,833,065
2005	1,527,972	2,868,417	9,205,270	11,352,621	3,090,846	7,385,404	17,033,421	8,742,795	12,194,214	73,380,960
Forecast										
2006	1,528,137	2,817,075	8,828,797	10,880,363	2,986,757	7,400,361	16,550,695	8,645,252	12,166,341	71,801,778
2007	1,539,101	2,864,121	9,012,782	11,022,163	3,038,920	7,553,734	16,796,738	8,813,269	12,405,877	73,046,705
2008	1,550,234	2,894,361	9,147,368	11,192,147	3,072,998	7,674,778	17,028,162	8,964,822	12,618,625	74,143,493
2009	1,561,541	2,925,290	9,283,734	11,354,084	3,107,851	7,799,233	17,276,826	9,118,932	12,838,298	75,265,789
2010	1,573,017	2,956,931	9,421,095	11,520,377	3,143,518	7,926,829	17,520,071	9,277,188	13,064,685	76,403,511
2011	1,584,683	2,989,304	9,562,215	11,687,789	3,180,002	8,052,653	17,769,347	9,434,532	13,293,053	77,553,578
2012	1,596,521	3,022,408	9,707,228	11,857,526	3,217,335	8,182,217	18,024,825	9,596,449	13,528,453	78,732,962
2013	1,608,539	3,056,297	9,856,238	12,031,814	3,255,533	8,315,141	18,286,880	9,763,084	13,771,297	79,944,623
2014	1,620,740	3,090,895	10,009,377	12,210,792	3,294,617	8,451,509	18,572,513	9,940,269	14,021,006	81,211,718
2015	1,631,952	3,118,532	10,145,866	12,381,227	3,325,990	8,572,301	18,796,120	10,083,627	14,229,060	82,264,675
2016	1,643,325	3,146,691	10,285,831	12,514,982	3,357,937	8,694,783	19,024,119	10,226,118	14,442,278	83,336,064
2017	1,654,861	3,175,380	10,429,387	12,672,019	3,390,458	8,819,771	19,256,752	10,370,127	14,661,063	84,429,818
2018	1,666,568	3,204,629	10,576,674	12,832,531	3,423,579	8,947,646	19,494,111	10,516,944	14,884,971	85,547,653
2019	1,678,443	3,234,427	10,727,799	12,996,598	3,457,300	9,078,150	19,736,315	10,666,653	15,114,476	86,690,161
2020	1,690,499	3,264,798	10,882,478	13,164,318	3,491,640	9,211,686	19,983,457	10,819,131	15,349,479	87,857,484
2021	1,702,734	3,295,757	11,041,243	13,333,655	3,526,610	9,348,024	20,235,679	10,970,449	15,588,410	89,042,561
2022	1,715,139	3,327,328	11,204,197	13,506,752	3,562,232	9,487,175	20,493,089	11,125,043	15,832,803	90,253,739
2023	1,727,734	3,359,504	11,371,484	13,683,680	3,598,506	9,629,258	20,755,743	11,282,969	16,083,393	91,492,271
2024	1,740,516	3,392,313	11,543,260	13,864,571	3,635,482	9,774,307	21,023,856	11,444,314	16,339,883	92,758,482
2025	1,753,484	3,425,759	11,719,652	14,049,505	3,673,105	9,922,385	21,297,546	11,609,173	16,602,695	94,053,304

*Includes Itinerant air carrier, commuter/air taxi, general aviation and military operations at all airports.

**Table S-8.
Total Airport Operations Summary by Region***

Fiscal Year	Alaska (AAL)	Central (ACE)	Eastern (AEA)	Great Lakes (AGL)	New England (ANE)	Northwest Mountain (ANM)	Southern (ASO)	Southwest (ASW)	Western Pacific (AWP)	National Total
Historical										
2001	2,560,981	4,835,385	15,288,326	20,020,717	5,520,942	11,814,493	26,061,987	15,656,476	20,179,474	121,938,781
2002	2,500,896	4,777,158	14,776,851	20,056,414	5,322,271	11,688,096	25,799,521	15,358,497	19,779,577	120,059,281
2003	2,574,988	4,564,053	14,339,621	19,772,632	5,076,753	11,688,582	25,211,948	15,346,939	19,367,122	117,942,638
2004	2,587,402	4,396,341	14,557,726	19,746,353	5,134,438	11,674,421	25,532,728	15,382,718	19,501,673	118,513,798
2005	1,913,112	4,412,826	14,554,775	19,061,023	5,151,359	11,591,907	25,546,224	14,785,283	19,285,214	116,301,723
Forecast										
2006	1,908,642	4,356,740	14,176,482	18,384,864	4,898,226	11,695,470	24,765,861	14,622,504	19,236,637	114,145,426
2007	1,920,451	4,412,146	14,393,706	18,558,872	5,057,194	11,890,599	25,055,563	14,838,230	19,531,874	115,658,635
2008	1,932,445	4,446,579	14,560,295	18,779,624	5,098,176	12,054,261	25,331,316	15,034,483	19,801,285	117,038,444
2009	1,944,630	4,481,768	14,729,155	18,975,974	5,140,032	12,222,174	25,625,012	15,234,129	20,079,649	118,431,521
2010	1,956,993	4,517,727	14,899,524	19,177,237	5,182,802	12,393,944	25,914,004	15,438,794	20,363,765	119,844,790
2011	1,969,566	4,554,486	15,074,158	19,380,284	5,226,498	12,565,234	26,209,750	15,643,433	20,651,928	121,275,335
2012	1,982,318	4,592,042	15,253,220	19,585,231	5,271,137	12,741,000	26,512,429	15,853,529	20,948,216	122,739,123
2013	1,995,271	4,630,448	15,436,819	19,795,303	5,316,752	12,921,093	26,822,233	16,069,273	21,253,066	124,240,258
2014	2,008,419	4,669,635	15,625,092	20,010,625	5,363,355	13,105,638	27,156,767	16,296,521	21,565,914	125,801,966
2015	2,020,594	4,701,927	15,797,282	20,198,011	5,402,358	13,275,623	27,429,858	16,490,888	21,838,268	127,154,807
2016	2,032,844	4,734,823	15,973,516	20,389,321	5,442,038	13,448,322	27,708,124	16,685,367	22,116,980	128,531,415
2017	2,045,474	4,768,318	16,153,922	20,584,324	5,482,408	13,624,599	27,991,835	16,882,401	22,402,436	129,935,717
2018	2,058,192	4,802,447	16,338,644	20,783,397	5,523,492	13,804,882	28,281,083	17,093,280	22,694,287	131,389,664
2019	2,071,097	4,837,196	16,527,823	20,986,661	5,565,292	13,988,927	28,576,019	17,288,068	22,982,963	132,834,048
2020	2,084,196	4,872,599	16,720,051	21,194,208	5,607,821	14,177,180	28,876,732	17,496,689	23,298,439	134,327,915
2021	2,097,494	4,908,668	16,916,917	21,404,040	5,651,101	14,369,454	29,183,383	17,705,254	23,609,149	135,845,460
2022	2,110,979	4,945,431	17,118,553	21,618,302	5,695,152	14,565,781	29,498,061	17,918,211	23,926,657	137,395,127
2023	2,124,671	4,982,878	17,325,107	21,837,054	5,739,977	14,766,330	29,814,937	18,135,643	24,251,739	138,976,336
2024	2,138,566	5,021,037	17,536,722	22,060,486	5,785,606	14,971,162	30,140,144	18,357,659	24,584,115	140,595,497
2025	2,152,865	5,059,919	17,753,570	22,288,647	5,832,047	15,180,381	30,471,857	18,584,373	24,924,242	142,247,701

*Includes all itinerant and local operations at all airports.

**Table S-9.
Instrument Operations Summary by Region***

Fiscal Year	Alaska (AAL)	Central (ACE)	Eastern (AEA)	Great Lakes (AGL)	New England (ANE)	Northwest Mountain (ANM)	Southern (ASO)	Southwest (ASW)	Western Pacific (AWP)	National Total
Historical										
2001	440,292	1,994,956	5,869,300	7,684,748	1,787,448	3,264,672	10,883,372	6,314,843	5,359,732	43,399,163
2002	437,959	2,036,240	5,754,812	7,539,405	1,725,845	3,184,122	11,192,805	6,318,429	5,400,867	43,600,284
2003	433,136	1,888,208	6,543,901	7,368,086	1,603,151	3,185,333	10,902,614	6,115,361	6,779,507	44,817,277
2004	443,979	1,792,148	7,345,227	7,577,208	1,585,423	3,182,586	11,797,539	6,129,804	6,987,163	46,841,077
2005	428,546	1,777,074	7,481,793	7,487,722	1,717,340	3,199,678	11,803,883	6,045,128	6,995,736	46,937,100
Forecast										
2006	422,289	1,724,451	7,082,818	7,099,568	1,608,575	3,113,384	11,399,402	5,933,984	7,164,537	45,549,008
2007	426,955	1,755,885	7,262,982	7,215,956	1,650,307	3,207,504	11,589,019	6,047,002	7,306,606	46,462,176
2008	432,425	1,784,206	7,411,544	7,363,241	1,677,350	3,268,870	11,806,516	6,164,501	7,458,743	47,367,396
2009	438,889	1,820,338	7,593,498	7,541,463	1,712,455	3,340,171	12,090,380	6,307,497	7,649,547	48,494,218
2010	445,850	1,860,822	7,792,864	7,736,401	1,751,578	3,416,973	12,394,113	6,464,794	7,859,970	49,723,365
2011	453,062	1,903,169	8,000,631	7,932,528	1,792,384	3,496,498	12,711,735	6,627,763	8,080,239	50,998,009
2012	460,409	1,946,579	8,214,515	8,134,253	1,834,277	3,578,052	13,038,080	6,795,371	8,307,409	52,308,945
2013	467,855	1,990,692	8,432,849	8,340,045	1,876,889	3,661,272	13,370,483	6,966,262	8,539,330	53,645,657
2014	475,337	2,035,042	8,654,418	8,548,724	1,919,879	3,745,865	13,722,648	7,139,107	8,774,817	55,015,437
2015	482,587	2,078,152	8,874,636	8,750,651	1,962,235	3,827,348	14,047,599	7,301,802	9,009,284	56,334,294
2016	489,786	2,120,892	9,095,469	8,952,880	2,004,223	3,909,310	14,371,020	7,460,579	9,244,519	57,648,678
2017	497,013	2,163,851	9,319,732	9,157,948	2,046,564	3,992,330	14,697,420	7,619,724	9,483,459	58,978,041
2018	504,280	2,206,794	9,541,229	9,360,784	2,088,090	4,075,560	15,022,198	7,778,018	9,718,171	60,295,104
2019	511,636	2,250,904	9,769,544	9,569,820	2,130,588	4,160,682	15,356,601	7,941,073	9,961,458	61,652,306
2020	519,122	2,295,966	10,003,158	9,783,603	2,173,858	4,247,519	15,698,505	8,107,875	10,210,878	63,040,484
2021	528,731	2,341,961	10,241,608	10,000,580	2,217,873	4,336,107	16,047,525	8,278,126	10,465,566	64,456,057
2022	534,442	2,388,866	10,485,618	10,222,404	2,262,711	4,426,457	16,403,918	8,452,054	10,726,538	65,903,008
2023	542,264	2,436,688	10,735,238	10,449,163	2,308,403	4,518,654	16,767,780	8,629,683	10,993,756	67,381,629
2024	550,186	2,485,297	10,990,146	10,680,488	2,354,852	4,612,586	17,138,198	8,810,598	11,266,788	68,889,139
2025	558,220	2,534,801	11,251,243	10,917,185	2,402,224	4,708,413	17,516,349	8,995,353	11,546,839	70,430,607

*Includes only TRACON and radar tower facilities.

**Table S-10.
Enplanements Summary by Region***

Fiscal Year	Alaska (AAL)	Central (ACE)	Eastern (AEA)	Great Lakes (AGL)	New England (ANE)	Northwest Mountain (ANM)	Southern (ASO)	Southwest (ASW)	Western Pacific (AWP)	National Total
Historical										
2001	3,779,278	24,715,286	108,214,511	99,079,856	22,967,120	56,349,923	155,316,701	78,169,210	144,571,119	693,163,004
2002	3,402,021	22,100,229	95,437,980	92,774,482	20,009,536	51,984,769	142,217,958	70,880,173	128,869,936	627,677,084
2003	3,771,255	20,485,465	97,796,759	97,110,955	20,228,893	53,388,226	147,097,800	70,903,563	132,466,463	643,249,479
2004	4,005,038	16,519,891	107,926,578	105,033,939	22,269,982	57,352,784	156,465,720	76,728,487	142,680,868	690,983,087
2005	4,125,146	16,887,762	117,505,795	108,387,772	23,952,792	60,892,971	171,077,364	80,151,820	150,157,063	733,138,485
Forecast										
2006	4,056,312	17,409,759	117,332,307	107,714,652	24,012,842	63,471,771	166,212,678	80,641,440	153,989,869	734,841,630
2007	4,128,417	18,232,802	123,892,508	111,598,716	25,065,232	66,520,737	171,882,999	83,384,644	160,148,121	764,854,176
2008	4,202,138	18,704,561	127,546,772	115,049,029	25,716,092	68,357,030	176,530,135	85,985,314	165,407,993	787,499,064
2009	4,277,485	19,190,150	131,219,913	118,598,412	26,385,984	70,234,217	181,313,777	88,681,783	170,852,250	810,733,951
2010	4,354,517	19,690,018	134,951,075	122,259,537	27,075,527	72,145,083	186,235,013	91,396,274	176,494,494	834,601,538
2011	4,433,278	20,204,656	138,810,044	125,923,271	27,785,351	74,036,980	191,302,881	93,926,766	182,150,246	858,473,473
2012	4,513,802	20,734,559	142,801,955	129,497,318	28,516,110	75,978,537	196,522,204	96,529,571	188,008,471	883,102,527
2013	4,596,138	21,280,229	146,932,162	133,284,218	29,268,487	77,979,429	201,913,726	99,205,578	194,095,123	908,555,100
2014	4,680,338	21,842,200	151,206,312	137,186,519	30,043,185	80,038,320	207,467,845	102,258,602	200,367,280	935,090,611
2015	4,766,443	22,421,029	155,630,240	141,215,432	30,840,937	82,159,293	213,188,649	105,382,827	206,848,125	962,452,775
2016	4,854,501	23,017,291	160,210,109	145,374,898	31,662,479	84,335,290	219,058,483	108,419,983	213,550,457	990,483,491
2017	4,944,555	23,631,580	164,952,317	149,669,003	32,508,600	86,574,559	225,105,908	111,537,437	220,479,524	1,019,403,483
2018	5,036,665	24,264,538	169,863,580	154,101,849	33,380,110	88,882,615	231,336,819	114,737,638	227,656,448	1,049,260,362
2019	5,130,888	24,916,784	174,950,964	158,678,056	34,277,838	91,258,480	237,757,309	118,023,303	235,096,066	1,080,089,688
2020	5,227,274	25,588,996	180,221,782	163,401,784	35,202,649	93,702,887	244,344,149	121,397,270	242,794,962	1,111,881,753
2021	5,325,882	26,281,893	185,683,750	168,190,397	36,155,443	96,213,930	251,126,808	124,610,077	250,603,174	1,144,191,354
2022	5,426,753	26,996,178	191,344,918	173,129,969	37,137,152	98,801,764	258,116,849	127,919,505	258,685,589	1,177,558,677
2023	5,529,969	27,732,629	197,213,747	178,225,089	38,148,727	101,464,755	265,321,203	131,328,741	267,069,238	1,212,034,098
2024	5,635,580	28,492,013	203,299,034	183,493,610	39,191,173	104,204,421	272,747,111	134,841,098	275,733,587	1,247,637,827
2025	5,743,656	29,275,162	209,610,050	188,942,143	40,265,516	107,024,092	280,403,145	138,459,999	284,722,099	1,284,445,862

*Includes both tower and non-tower airports.

**Table S-11.
Based Aircraft Summary by Region***

Fiscal Year	Alaska (AAL)	Central (ACE)	Eastern (AEA)	Great Lakes (AGL)	New England (ANE)	Northwest Mountain (ANM)	Southern (ASO)	Southwest (ASW)	Western Pacific (AWP)	National Total
Historical										
2001	5,212	10,430	20,332	31,702	6,854	21,967	33,691	22,681	36,700	189,569
2002	5,193	10,648	19,861	32,389	7,037	22,387	33,974	23,176	36,747	191,412
2003	5,196	10,614	19,867	32,826	7,080	22,546	34,269	23,323	37,058	192,779
2004	5,292	10,796	20,055	32,585	7,085	23,592	35,444	24,005	36,905	195,759
2005	5,255	10,780	20,150	33,057	7,282	23,941	36,153	25,275	37,920	199,813
Forecast										
2006	5,261	10,795	20,242	33,379	7,198	24,192	36,325	25,485	38,193	201,070
2007	5,273	10,826	20,327	33,581	7,259	24,464	36,563	25,718	38,489	202,500
2008	5,284	10,862	20,417	33,816	7,319	24,737	36,855	25,959	38,809	204,058
2009	5,294	10,902	20,525	34,047	7,375	25,002	37,106	26,199	39,117	205,567
2010	5,305	10,938	20,622	34,261	7,439	25,278	37,406	26,463	39,440	207,142
2011	5,317	10,966	20,719	34,478	7,500	25,538	37,686	26,708	39,753	208,665
2012	5,331	11,015	20,854	34,741	7,562	25,858	38,010	27,013	40,124	210,508
2013	5,343	11,062	20,950	34,957	7,625	26,135	38,302	27,276	40,448	212,098
2014	5,355	11,093	21,054	35,216	7,697	26,409	38,609	27,547	40,780	213,780
2015	5,366	11,140	21,149	35,446	7,754	26,712	38,919	27,832	41,133	215,451
2016	5,379	11,205	21,275	35,718	7,825	27,026	39,278	28,155	41,497	217,358
2017	5,391	11,254	21,372	35,968	7,893	27,318	39,600	28,459	41,852	219,107
2018	5,404	11,308	21,495	36,244	7,966	27,639	39,950	28,765	42,210	220,981
2019	5,414	11,359	21,613	36,506	8,038	27,949	40,299	29,079	42,583	222,840
2020	5,424	11,402	21,718	36,754	8,106	28,249	40,630	29,372	42,944	224,599
2021	5,439	11,465	21,851	37,047	8,187	28,582	41,014	29,707	43,317	226,609
2022	5,452	11,528	21,982	37,348	8,261	28,929	41,400	30,048	43,708	228,858
2023	5,467	11,593	22,113	37,644	8,343	29,279	41,801	30,388	44,114	230,742
2024	5,479	11,659	22,242	37,926	8,420	29,629	42,215	30,757	44,515	232,842
2025	5,491	11,726	22,371	38,215	8,497	29,988	42,632	31,132	44,919	234,971

*Includes both tower and non-tower airports.

Appendix A

Description of Activity Measures

Air Carrier Enplanements

These data summarize domestic enplaned passengers (originations and connections) of U.S. commercial air carriers and international enplanements for both U.S. and foreign flag carriers submitted to the U.S. Department of Transportation (DOT), Bureau of Transportation Statistics (BTS) on T-100 reports. Estimates include both scheduled and non-scheduled enplaned passengers.

Regional Enplanements

Starting in FY 2003, FAA includes in the regional category enplanements for those airlines whose primary function is to feed mainline carriers, regardless of aircraft size. As of October 2002, all scheduled and non-scheduled operations using aircraft with 10 or more seats to transport regional passengers must report on T-100.

Historic enplanement data includes originating passengers on scheduled commuter or regional carriers as reported on DOT Form 41 and 298-C; where possible, adjustments were made to include connecting passengers. Historically, Form 298-C included carriers operating at least five scheduled round trips per week whose entire fleet consists of aircraft having 60 seats or less.

Aircraft Operations

FAA air traffic controllers count landings and takeoffs at FAA towered airports. Control-

lers employed by an FAA contractor count operations at FAA contract towers. At non-FAA facilities, operations counts represent an estimate.

Air carrier operations represent either takeoffs or landings of commercial aircraft with seating capacity of more than 60 seats.

Commuter/air taxi operations is one category. Commuter operations include takeoffs and landings by aircraft with 60 or fewer seats that transport regional passengers on scheduled commercial flights. Air taxi operations include takeoffs and landings by aircraft with 60 or fewer seats conducted on non-scheduled or for-hire flights.

General aviation operations represent all civil aviation aircraft takeoffs and landings not classified as commercial. Military operations represent takeoffs and landings by military aircraft. GA and military operations are further subdivided into itinerant or local flights.

Local Operations

Aircraft operating in the traffic pattern or within sight of the tower, or aircraft known to be departing or arriving from flight in local practice areas, or aircraft executing practice instrument approaches at the airport.

Itinerant Operations

FAA reports all aircraft operations other than local operations as itinerant. Essentially, these data represent takeoffs and land-

ings of aircraft going from one airport to another.

Instrument Operations

These data include arrivals, departures, and overflights conducted by an FAA approach control facility for aircraft with an Instrument Flight Rule (IFR) flight plan or special Visual Flight Rule procedures. They also contain operations where a terminal control facility provides IFR aircraft separation. The FAA classifies these operations into the following three types.

Primary Instrument Operations

These data consist of aircraft arrivals and

departures at a primary airport, normally the airport with the approach control facility.

Secondary Instrument Operations

These data show arrivals and departures at secondary airports.

Overflights

These data include operations of aircraft in transit through the approach control facility airspace.

**Table B-1.
List of Large Hub Towers**

Location Identifier	Region	Airport Name	City, State
ATL	ASO	HARTSFIELD - JACKSON ATLANTA INTL	ATLANTA, GA
BOS	ANE	GENERAL EDWARD LAWRENCE LOGAN INTL	BOSTON, MA
BWI	AEA	BALTIMORE/WASHINGTON INTL THURGOOD MARSHAL	BALTIMORE, MD
CLT	ASO	CHARLOTTE/DOUGLAS INTL	CHARLOTTE, NC
CVG	ASO	CINCINNATI/NORTHERN KENTUCKY INTERNATIONAL	COVINGTON, KY
DCA	AEA	RONALD REAGAN WASHINGTON NATIONAL	WASHINGTON, DC
DEN	ANM	DENVER INTL	DENVER, CO
DFW	ASW	DALLAS/FORT WORTH INTERNATIONAL	DALLAS-FORT WORTH, TX
DTW	AGL	DETROIT METROPOLITAN WAYNE COUNTY	DETROIT, MI
EWK	AEA	NEWARK LIBERTY INTL	NEWARK, NJ
FLL	ASO	FORT LAUDERDALE/HOLLYWOOD INTL	FORT LAUDERDALE, FL
HNL	AWP	HONOLULU INTL	HONOLULU, HI
IAD	AEA	WASHINGTON DULLES INTERNATIONAL	WASHINGTON, DC
IAH	ASW	GEORGE BUSH INTERCONTINENTAL/HOUSTON	HOUSTON, TX
JFK	AEA	JOHN F KENNEDY INTL	NEW YORK, NY
LAS	AWP	MC CARRAN INTL	LAS VEGAS, NV
LAX	AWP	LOS ANGELES INTL	LOS ANGELES, CA
LGA	AEA	LA GUARDIA	NEW YORK, NY
MCO	ASO	ORLANDO INTL	ORLANDO, FL
MDW	AGL	CHICAGO MIDWAY INTL	CHICAGO, IL
MIA	ASO	MIAMI INTL	MIAMI, FL
MSP	AGL	MINNEAPOLIS-ST PAUL INTL/WOLD-CHAMBERLAIN	MINNEAPOLIS, MN
ORD	AGL	CHICAGO OHARE INTL P	CHICAGO, IL
PHL	AEA	PHILADELPHIA INTL	PHILADELPHIA, PA
PHX	AWP	PHOENIX SKY HARBOR INTL	PHOENIX, AZ
SAN	AWP	SAN DIEGO INTL	SAN DIEGO, CA
SEA	ANM	SEATTLE-TACOMA INTL	SEATTLE, WA
SFO	AWP	SAN FRANCISCO INTERNATIONAL	SAN FRANCISCO, CA
SLC	ANM	SALT LAKE CITY INTL	SALT LAKE CITY, UT
TPA	ASO	TAMPA INTL	TAMPA, FL

Listed 30 Airports.

Table B-2.
List of Medium Hub Towers

Location Identifier	Region	Airport Name	City, State
ABQ	ASW	ALBUQUERQUE INTL. SUNPORT	ALBUQUERQUE, NM
ANC	AAL	TED STEVENS ANCHORAGE INTL	ANCHORAGE, AK
AUS	ASW	AUSTIN-BERGSTROM INTL	AUSTIN, TX
BDL	ANE	BRADLEY INTL	WINDSOR LOCKS, CT
BNA	ASO	NASHVILLE INTL	NASHVILLE, TN
BUF	AEA	BUFFALO NIAGARA INTL	BUFFALO, NY
BUR	AWP	BOB HOPE	BURBANK, CA
CLE	AGL	CLEVELAND-HOPKINS INTL	CLEVELAND, OH
CMH	AGL	PORT COLUMBUS INTL	COLUMBUS, OH
DAL	ASW	DALLAS LOVE FIELD	DALLAS, TX
HOU	ASW	WILLIAM P HOBBY	HOUSTON, TX
IND	AGL	INDIANAPOLIS INTL	INDIANAPOLIS, IN
JAX	ASO	JACKSONVILLE INTL	JACKSONVILLE, FL
MCI	ACE	KANSAS CITY INTL	KANSAS CITY, MO
MEM	ASO	MEMPHIS INTL	MEMPHIS, TN
MHT	ANE	MANCHESTER	MANCHESTER, NH
MKE	AGL	GENERAL MITCHELL INTERNATIONAL	MILWAUKEE, WI
MSY	ASW	LOUIS ARMSTRONG NEW ORLEANS INTL	NEW ORLEANS, LA
OAK	AWP	METROPOLITAN OAKLAND INTL	OAKLAND, CA
OGG	AWP	KAHULUI	KAHULUI, HI
OMA	ACE	EPPLEY AIRFIELD	OMAHA, NE
ONT	AWP	ONTARIO INTL	ONTARIO, CA
ORF	AEA	NORFOLK INTL	NORFOLK, VA
PBI	ASO	PALM BEACH INTL	WEST PALM BEACH, FL
PDX	ANM	PORTLAND INTL	PORTLAND, OR
PIT	AEA	PITTSBURGH INTERNATIONAL	PITTSBURGH, PA
PVD	ANE	THEODORE FRANCIS GREEN STATE	PROVIDENCE, RI
RDU	ASO	RALEIGH-DURHAM INTL	RALEIGH/DURHAM, NC
RNO	AWP	RENO/TAHOE INTERNATIONAL	RENO, NV
RSW	ASO	SOUTHWEST FLORIDA INTL	FORT MYERS, FL
SAT	ASW	SAN ANTONIO INTL	SAN ANTONIO, TX
SDF	ASO	LOUISVILLE INTL-STANDIFORD FIELD	LOUISVILLE, KY
SJC	AWP	NORMAN Y. MINETA SAN JOSE INTERNATIONAL	SAN JOSE, CA
SJU	ASO	LUIS MUNOZ MARIN INTL	SAN JUAN, PR
SMF	AWP	SACRAMENTO INTERNATIONAL	SACRAMENTO, CA
SNA	AWP	JOHN WAYNE AIRPORT-ORANGE COUNTY	SANTA ANA, CA
STL	ACE	LAMBERT-ST LOUIS INTL	ST LOUIS, MO
TUS	AWP	TUCSON INTL	TUCSON, AZ

Listed 38 Airports.

**Table B-3.
List of Small Hub Towers**

Location Identifier	Region	Airport Name	City, State
ABE	AEA	LEHIGH VALLEY INTERNATIONAL	ALLENTOWN, PA
ACY	AEA	ATLANTIC CITY INTERNATIONAL	ATLANTIC CITY, NJ
ALB	AEA	ALBANY INTL	ALBANY, NY
AMA	ASW	RICK HUSBAND AMARILLO INTL	AMARILLO, TX
BHM	ASO	BIRMINGHAM INTL	BIRMINGHAM, AL
BIL	ANM	BILLINGS LOGAN INTL	BILLINGS, MT
BOI	ANM	BOISE AIR TERMINAL/GOWEN FLD	BOISE, ID
BTR	ASW	BATON ROUGE METROPOLITAN, RYAN FIELD	BATON ROUGE, LA
BTV	ANE	BURLINGTON INTL	BURLINGTON, VT
CAE	ASO	COLUMBIA METROPOLITAN	COLUMBIA, SC
CAK	AGL	AKRON-CANTON REGIONAL	AKRON, OH
CHS	ASO	CHARLESTON AFB/INTL	CHARLESTON, SC
CID	ACE	THE EASTERN IOWA	CEDAR RAPIDS, IA
COS	ANM	CITY OF COLORADO SPRINGS MUNI	COLORADO SPRINGS, CO
CRP	ASW	CORPUS CHRISTI INTL	CORPUS CHRISTI, TX
DAY	AGL	JAMES M COX DAYTON INTL	DAYTON, OH
DSM	ACE	DES MOINES INTL	DES MOINES, IA
ELP	ASW	EL PASO INTL	EL PASO, TX
EUG	ANM	MAHLON SWEET FIELD	EUGENE, OR
FAI	AAL	FAIRBANKS INTL	FAIRBANKS, AK
FAT	AWP	FRESNO YOSEMITE INTERNATIONAL	FRESNO, CA
FNT	AGL	BISHOP INTERNATIONAL	FLINT, MI
GEG	ANM	SPOKANE INTL	SPOKANE, WA
GPT	ASO	GULFPORT-BILOXI INTL	GULFPORT, MS
GRB	AGL	AUSTIN STRAUBEL INTERNATIONAL	GREEN BAY, WI
GRR	AGL	GERALD R. FORD INTERNATIONAL	GRAND RAPIDS, MI
GSN	AWP	FRANCISCO C. ADA/SAIPAN INTL	SAIPAN ISLAND, CQ
GSO	ASO	PIEDMONT TRIAD INTERNATIONAL	GREENSBORO, NC
GSP	ASO	GREENVILLE SPARTANBURG INTL -	GREER, SC
GUM	AWP	GUAM INTERNATIONAL	AGANA, GU
HPN	AEA	WESTCHESTER COUNTY	WHITE PLAINS, NY
HRL	ASW	VALLEY INTL	HARLINGEN, TX
HSV	ASO	HUNTSVILLE INTL-CARL T JONES FIELD	HUNTSVILLE, AL
ICT	ACE	WICHITA MID-CONTINENT	WICHITA, KS
ISP	AEA	LONG ISLAND MAC ARTHUR	ISLIP, NY
ITO	AWP	HILO INTERNATIONAL	HILO, HI
JAN	ASO	JACKSON-EVERS INTL	JACKSON, MS
KOA	AWP	KONA INTL AT KEAHOLE	KAILUA/KONA, HI
LBB	ASW	LUBBOCK PRESTON SMITH INTL	LUBBOCK, TX
LEX	ASO	BLUE GRASS	LEXINGTON, KY
LGB	AWP	LONG BEACH /DAUGHERTY FIELD/	LONG BEACH, CA
LIH	AWP	LIHUE	LIHUE, HI
LIT	ASW	ADAMS FIELD	LITTLE ROCK, AR
MAF	ASW	MIDLAND INTERNATIONAL	MIDLAND, TX
MDT	AEA	HARRISBURG INTERNATIONAL	HARRISBURG, PA
MLI	AGL	QUAD CITY INTL	MOLINE, IL
MSN	AGL	DANE COUNTY REGIONAL-TRUAX FIELD	MADISON, WI
MYR	ASO	MYRTLE BEACH INTL	MYRTLE BEACH, SC
OKC	ASW	WILL ROGERS WORLD	OKLAHOMA CITY, OK
PHF	AEA	NEWPORT NEWS/WILLIAMSBURG INTERNATIONAL	NEWPORT NEWS, VA

**Table B-3.
List of Small Hub Towers**

Location Identifier	Region	Airport Name	City, State
PNS	ASO	PENSACOLA REGIONAL	PENSACOLA, FL
PSP	AWP	PALM SPRINGS INTERNATIONAL	PALM SPRINGS, CA
PWM	ANE	PORTLAND INTL JETPORT	PORTLAND, ME
RIC	AEA	RICHMOND INTERNATIONAL	RICHMOND, VA
ROC	AEA	GREATER ROCHESTER INTERNATIONAL	ROCHESTER, NY
SAV	ASO	SAVANNAH/HILTON HEAD INTERNATIONAL	SAVANNAH, GA
SBA	AWP	SANTA BARBARA MUNI	SANTA BARBARA, CA
SFB	ASO	ORLANDO SANFORD INTL	ORLANDO, FL
SGF	ACE	SPRINGFIELD-BRANSON REGIONAL	SPRINGFIELD, MO
SRQ	ASO	SARASOTA/BRADENTON INTL	SARASOTA/BRADENTON , FL
STT	ASO	CYRIL E KING	CHARLOTTE AMALIE, VI
SYR	AEA	SYRACUSE HANCOCK INTL	SYRACUSE, NY
TLH	ASO	TALLAHASSEE REGIONAL	TALLAHASSEE, FL
TUL	ASW	TULSA INTL	TULSA, OK
TYS	ASO	MC GHEE TYSON	KNOXVILLE, TN
XNA	ASW	NORTHWEST ARKANSAS RGNL	FAYETTEVILLE/SPRINGDALE/, AR

Listed 66 Airports.

**Table B-4.
List of Non-Hub Towers**

Location Identifier	Region	Airport Name	City, State
ABI	ASW	ABILENE REGIONAL	ABILENE, TX
ABY	ASO	SOUTHWEST GEORGIA REGIONAL	ALBANY, GA
ACK	ANE	NANTUCKET MEMORIAL	NANTUCKET, MA
ACT	ASW	WACO REGIONAL	WACO, TX
ADM	ASW	ARDMORE MUNI	ARDMORE, OK
ADQ	AAL	KODIAK	KODIAK, AK
ADS	ASW	ADDISON	DALLAS, TX
ADW	AEA	ANDREWS AFB	CAMP SPRINGS, MD
AEX	ASW	ALEXANDRIA INTL	ALEXANDRIA, LA
AFW	ASW	FORT WORTH ALLIANCE	FORT WORTH, TX
AGC	AEA	ALLEGHENY COUNTY	PITTSBURGH, PA
AGS	ASO	AUGUSTA RGNL AT BUSH FIELD	AUGUSTA, GA
AHN	ASO	ATHENS/BEN EPPS	ATHENS, GA
AKN	AAL	KING SALMON	KING SALMON, AK
ALN	AGL	ST LOUIS REGIONAL	ALTON/ST LOUIS, IL
ALO	ACE	WATERLOO REGIONAL	WATERLOO, IA
ALW	ANM	WALLA WALLA REGIONAL	WALLA WALLA, WA
ANE	AGL	ANOKA COUNTY-BLAINE ARPT(JANES FIELD)	MINNEAPOLIS, MN
APA	ANM	CENTENNIAL	DENVER, CO
APC	AWP	NAPA COUNTY	NAPA, CA
APF	ASO	NAPLES MUNI	NAPLES, FL
ARA	ASW	ACADIANA REGIONAL	NEW IBERIA, LA
ARB	AGL	ANN ARBOR MUNI	ANN ARBOR, MI
ARR	AGL	AURORA MUNI	CHICAGO/AURORA, IL
ASE	ANM	ASPEN-PITKIN CO/SARDY FIELD	ASPEN, CO
ASG	ASW	SPRINGDALE MUNI	SPRINGDALE, AR
ASH	ANE	BOIRE FIELD	NASHUA, NH
ATW	AGL	OUTAGAMIE COUNTY REGIONAL	APPLETON, WI
AVL	ASO	ASHEVILLE REGIONAL	ASHEVILLE, NC
AVP	AEA	WILKES-BARRE/SCRANTON INTL	WILKES-BARRE/SCRANTON, PA
AZO	AGL	KALAMAZOO/BATTLE CREEK INTERNATIONAL	KALAMAZOO, MI
BAF	ANE	BARNES MUNI	WESTFIELD/SPRINGFIELD, MA
BAK	AGL	COLUMBUS MUNI	COLUMBUS, IN
BCT	ASO	BOCA RATON	BOCA RATON, FL
BDR	ANE	IGOR I SIKORSKY MEMORIAL	BRIDGEPORT, CT
BED	ANE	LAURENCE G HANSCOM FLD	BEDFORD, MA
BET	AAL	BETHEL	BETHEL, AK
BFI	ANM	BOEING FIELD/KING COUNTY INTL	SEATTLE, WA
BFL	AWP	MEADOWS FIELD	BAKERSFIELD, CA
BFM	ASO	MOBILE DOWNTOWN	MOBILE, AL
BGM	AEA	GREATER BINGHAMTON/EDWIN A LINK FIELD	BINGHAMTON, NY
BGR	ANE	BANGOR INTL	BANGOR, ME
BIS	AGL	BISMARCK MUNI	BISMARCK, ND
BJC	ANM	JEFFCO	DENVER, CO
BKL	AGL	BURKE LAKEFRONT	CLEVELAND, OH
BLI	ANM	BELLINGHAM INTL	BELLINGHAM, WA
BMG	AGL	MONROE COUNTY	BLOOMINGTON, IN
BMI	AGL	CENTRAL IL REGL ARPT AT BLOOMINGTON-NORMAL	BLOOMINGTON/NORMAL, IL
BPT	ASW	SOUTHEAST TEXAS REGIONAL	BEAUMONT/PORT ARTHUR, TX
BRO	ASW	BROWNSVILLE/SOUTH PADRE ISLAND INTL P	BROWNSVILLE, TX
BTL	AGL	W K KELLOGG	BATTLE CREEK, MI
BVY	ANE	BEVERLY MUNI	BEVERLY, MA
BZN	ANM	GALLATIN FIELD	BOZEMAN, MT
CCR	AWP	BUCHANAN FIELD	CONCORD, CA
CDW	AEA	ESSEX COUNTY	CALDWELL, NJ

**Table B-4.
List of Non-Hub Towers**

Location Identifier	Region	Airport Name	City, State
CGF	AGL	CUYAHOGA COUNTY	CLEVELAND, OH
CHA	ASO	LOVELL FIELD	CHATTANOOGA, TN
CHD	AWP	CHANDLER MUNI	CHANDLER, AZ
CHO	AEA	CHARLOTTESVILLE-ALBEMARLE	CHARLOTTESVILLE, VA
CIC	AWP	CHICO MUNI	CHICO, CA
CKB	AEA	HARRISON/MARION REGIONAL	CLARKSBURG, WV
CLL	ASW	EASTERWOOD FIELD	COLLEGE STATION, TX
CMA	AWP	CAMARILLO	CAMARILLO, CA
CMI	AGL	UNIVERSITY OF ILLINOIS-WILLARD	CHAMPAIGN/URBANA, IL
CNO	AWP	CHINO	CHINO, CA
CNW	ASW	TSTC WACO	WACO, TX
COU	ACE	COLUMBIA REGIONAL	COLUMBIA, MO
GPR	ANM	NATRONA COUNTY INT'L	CASPER, WY
CPS	AGL	ST LOUIS DOWNTOWN	CAHOKIA/ST LOUIS, IL
CRE	ASO	GRAND STRAND	NORTH MYRTLE BEACH, SC
CRG	ASO	CRAIG MUNI	JACKSONVILLE, FL
CRQ	AWP	MC CLELLAN-PALOMAR	CARLSBAD, CA
CRW	AEA	YEAGER	CHARLESTON, WV
CSG	ASO	COLUMBUS METROPOLITAN	COLUMBUS, GA
CWA	AGL	CENTRAL WISCONSIN	MOSINEE, WI
CWF	ASW	CHENNAULT INTL	LAKE CHARLES, LA
CXY	AEA	CAPITAL CITY	HARRISBURG, PA
CYS	ANM	CHEYENNE REGIONAL/JERRY OLSON FIELD	CHEYENNE, WY
DAB	ASO	DAYTONA BEACH INTL	DAYTONA BEACH, FL
DBQ	ACE	DUBUQUE REGIONAL	DUBUQUE, IA
DEC	AGL	DECATUR	DECATUR, IL
DET	AGL	COLEMAN A. YOUNG MUNICIPAL	DETROIT, MI
DHN	ASO	DOTHAN RGNL	DOTHAN, AL
DLH	AGL	DULUTH INTL	DULUTH, MN
DPA	AGL	DUPAGE	CHICAGO/WEST CHICAGO, IL
DTN	ASW	SHREVEPORT DOWNTOWN	SHREVEPORT, LA
DTO	ASW	DENTON MUNI	DENTON, TX
DVT	AWP	PHOENIX DEER VALLEY	PHOENIX, AZ
DWH	ASW	DAVID WAYNE HOOKS MEMORIAL	HOUSTON, TX
DXR	ANE	DANBURY MUNI	DANBURY, CT
EGE	ANM	EAGLE COUNTY REGIONAL	EAGLE, CO
EKO	AWP	ELKO REGIONAL	ELKO, NV
ELM	AEA	ELMIRA/CORNING REGIONAL	ELMIRA/CORNING, NY
EMT	AWP	EL MONTE	EL MONTE, CA
ENA	AAL	KENAI MUNI	KENAI, AK
ENW	AGL	KENOSHA REGIONAL	KENOSHA, WI
ERI	AEA	ERIE INTL/TOM RIDGE FIELD	ERIE, PA
EVB	ASO	NEW SMYRNA BEACH MUNI	NEW SMYRNA BEACH, FL
EVV	AGL	EVANSVILLE REGIONAL	EVANSVILLE, IN
EWB	ANE	NEW BEDFORD REGIONAL	NEW BEDFORD, MA
EWN	ASO	GRAVEN COUNTY REGIONAL	NEW BERN, NC
EYW	ASO	KEY WEST INTL	KEY WEST, FL
FAR	AGL	HECTOR INTL	FARGO, ND
FAY	ASO	FAYETTEVILLE REGIONAL/GRANNIS FIELD	FAYETTEVILLE, NC
FCM	AGL	FLYING CLOUD	MINNEAPOLIS, MN
FFZ	AWP	FALCON FLD	MESA, AZ
FLG	AWP	FLAGSTAFF PULLIAM	FLAGSTAFF, AZ
FLO	ASO	FLORENCE REGIONAL	FLORENCE, SC
FMN	ASW	FOUR CORNERS REGIONAL	FARMINGTON, NM
FMY	ASO	PAGE FIELD	FORT MYERS, FL

**Table B-4.
List of Non-Hub Towers**

Location Identifier	Region	Airport Name	City, State
FOE	ACE	FORBES FIELD	TOPEKA, KS
FPR	ASO	ST LUCIE COUNTY INTL	FORT PIERCE, FL
FRG	AEA	REPUBLIC	FARMINGDALE, NY
FSD	AGL	JOE FOSS FIELD	SIOUX FALLS, SD
FSM	ASW	FORT SMITH REGIONAL	FORT SMITH, AR
FTW	ASW	FORT WORTH MEACHAM INTL	FORT WORTH, TX
FTY	ASO	FULTON COUNTY AIRPORT-BROWN FIELD	ATLANTA, GA
FUL	AWP	FULLERTON MUNI	FULLERTON, CA
FWA	AGL	FORT WAYNE INTERNATIONAL	FORT WAYNE, IN
FXE	ASO	FORT LAUDERDALE EXECUTIVE	FORT LAUDERDALE, FL
FYV	ASW	DRAKE FIELD	FAYETTEVILLE, AR
GCK	ACE	GARDEN CITY REGIONAL	GARDEN CITY, KS
GCN	AWP	GRAND CANYON NATIONAL PARK	GRAND CANYON, AZ
GEU	AWP	GLENDALE MUNICIPAL	GLENDALE, AZ
GFK	AGL	GRAND FORKS INTL	GRAND FORKS, ND
GKG	ASW	EAST TEXAS RGNL	LONGVIEW, TX
GJT	ANM	WALKER FIELD	GRAND JUNCTION, CO
GLH	ASO	MID DELTA RGNL	GREENVILLE, MS
GMU	ASO	GREENVILLE DOWNTOWN	GREENVILLE, SC
GNV	ASO	GAINESVILLE RGNL	GAINESVILLE, FL
GON	ANE	GROTON-NEW LONDON	GROTON (NEW LONDON) , CT
GPI	ANM	GLACIER PARK INTL	KALISPELL , MT
GPM	ASW	GRAND PRAIRIE MUNI	GRAND PRAIRIE, TX
GRI	ACE	CENTRAL NEBRASKA REGIONAL	GRAND ISLAND, NE
GTf	ANM	GREAT FALLS INTL	GREAT FALLS, MT
GTR	ASO	GOLDEN TRIANGLE REGIONAL	COLUMBUS/W POINT/STARKVILLE , MS
GYH	ASO	DONALDSON CENTER	GREENVILLE, SC
GYR	AWP	PHOENIX GOODYEAR	GOODYEAR, AZ
GYV	AGL	GARY/CHICAGO INTERNATIONAL	GARY, IN
HEF	AEA	MANASSAS REGIONAL/HARRY P. DAVIS FIELD	MANASSAS, VA
HFD	ANE	HARTFORD-BRAINARD	HARTFORD, CT
HGR	AEA	HAGERSTOWN REGIONAL-RICHARD A HENSON FLD	HAGERSTOWN, MD
HHR	AWP	JACK NORTHROP FIELD/HAWTHORNE MUNICIPAL	HAWTHORNE, CA
HIO	ANM	PORTLAND-HILLSBORO	PORTLAND, OR
HKS	ASO	HAWKINS FIELD	JACKSON, MS
HKY	ASO	HICKORY REGIONAL	HICKORY, NC
HLG	AEA	WHEELING OHIO CO	WHEELING, WV
HUN	ANM	HELENA REGIONAL	HELENA, MT
HND	AWP	HENDERSON EXECUTIVE	LAS VEGAS, NV
HOB	ASW	LEA COUNTY RGNL	HOBBS, NM
HTS	AEA	TRI-STATE/MILTON J. FERGUSON FIELD	HUNTINGTON, WV
HUF	AGL	TERRE HAUTE INTERNATIONAL-HULMAN FIELD	TERRE HAUTE, IN
HUM	ASW	HOUMA-TERREBONNE	HOUMA, LA
HUT	ACE	HUTCHINSON MUNI	HUTCHINSON, KS
HVN	ANE	TWEED-NEW HAVEN	NEW HAVEN, CT
HWD	AWP	HAYWARD EXECUTIVE	HAYWARD, CA
HWO	ASO	NORTH PERRY	HOLLYWOOD, FL
HXD	ASO	HILTON HEAD	HILTON HEAD ISLAND, SC
HYA	ANE	BARNSTABLE MUNI-BOARDMAN/POLANDO FIELD	HYANNIS, MA
IAG	AEA	NIAGARA FALLS INTL	NIAGARA FALLS, NY
IDA	ANM	IDAHO FALLS RGNL	IDAHO FALLS, ID
IFP	AWP	LAUGHLIN/BULLHEAD INTERNATIONAL	BULLHEAD CITY, AZ
ILG	AEA	NEW CASTLE	WILMINGTON, DE
ILM	ASO	WILMINGTON INTL	WILMINGTON, NC
INT	ASO	SMITH REYNOLDS	WINSTON SALEM, NC

**Table B-4.
List of Non-Hub Towers**

Location Identifier	Region	Airport Name	City, State
IPT	AEA	WILLIAMSPORT RGNL	WILLIAMSPORT, PA
ISM	ASO	KISSIMMEE GATEWAY	ORLANDO, FL
ISO	ASO	KINSTON RGNL JETPORT AT STALLINGS FLD	KINSTON, NC
ITH	AEA	ITHACA TOMPKINS REGIONAL	ITHACA, NY
IWA	AWP	WILLIAMS GATEWAY	PHOENIX, AZ
IXD	ACE	NEW CENTURY AIRCENTER	OLATHE, KS
JAC	ANM	JACKSON HOLE	JACKSON, WY
JEF	ACE	JEFFERSON CITY MEML	JEFFERSON CITY, MO
JLN	ACE	JOPLIN REGIONAL	JOPLIN, MO
JNU	AAL	JUNEAU INTL	JUNEAU, AK
JQF	ASO	CONCORD REGIONAL	CONCORD, NC
JRF	AWP	KALAELOA (JOHN RODGERS FIELD)	KAPOLEI, HI
JVL	AGL	SOUTHERN WISCONSIN REGIONAL	JANESVILLE, WI
JXN	AGL	JACKSON COUNTY-REYNOLDS FIELD	JACKSON, MI
LAF	AGL	PURDUE UNIVERSITY	LAFAYETTE, IN
LAL	ASO	LAKELAND LINDER RGNL	LAKELAND, FL
LAN	AGL	CAPITAL CITY	LANSING, MI
LAW	ASW	LAWTON-FORT SILL REGIONAL	LAWTON, OK
LBE	AEA	ARNOLD PALMER REGIONAL	LATROBE, PA
LCH	ASW	LAKE CHARLES REGIONAL	LAKE CHARLES, LA
LEB	ANE	LEBANON MUNI	LEBANON, NH
LFT	ASW	LAFAYETTE REGIONAL	LAFAYETTE, LA
LMT	ANM	KLAMATH FALLS	KLAMATH FALLS, OR
LNK	ACE	LINCOLN	LINCOLN, NE
LNS	AEA	LANCASTER	LANCASTER, PA
LOU	ASO	BOWMAN FIELD	LOUISVILLE, KY
LRD	ASW	LAREDO INTL	LAREDO, TX
LSE	AGL	LA CROSSE MUNI	LA CROSSE, WI
LUK	AGL	CINCINNATI MUNI AIRPORT LUNKEN FIELD	CINCINNATI, OH
LVK	AWP	LIVERMORE MUNI	LIVERMORE, CA
LWB	AEA	GREENBRIER VALLEY	LEWISBURG, WV
LWM	ANE	LAWRENCE MUNI	LAWRENCE, MA
LWS	ANM	LEWISTON-NEZ PERCE COUNTY	LEWISTON, ID
LYH	AEA	LYNCHBURG REGIONAL/PRESTON GLENN FLD	LYNCHBURG, VA
LZU	ASO	GWINNETT COUNTY - BRISCOE FIELD	LAWRENCEVILLE, GA
MBS	AGL	MBS INTL	SAGINAW, MI
MCN	ASO	MIDDLE GEORGIA REGIONAL	MACON, GA
MDH	AGL	SOUTHERN ILLINOIS	CARBONDALE/MURPHYSBORO, IL
MEI	ASO	KEY FIELD	MERIDIAN, MS
MFD	AGL	MANSFIELD LAHM REGIONAL	MANSFIELD, OH
MFE	ASW	MC ALLEN MILLER INTL	MC ALLEN, TX
MFR	ANM	ROGUE VALLEY INTERNATIONAL - MEDFORD	MEDFORD, OR
MGM	ASO	MONTGOMERY RGNL (DANNELLY FIELD)	MONTGOMERY, AL
MGW	AEA	MORGANTOWN MUNI-WALTER L. BILL HART FLD	MORGANTOWN, WV
MHK	ACE	MANHATTAN RGNL	MANHATTAN, KS
MHR	AWP	SACRAMENTO MATHER	SACRAMENTO, CA
MIC	AGL	CRYSTAL	MINNEAPOLIS, MN
MIE	AGL	DELAWARE COUNTY - JOHNSON FIELD	MUNCIE, IN
MKC	ACE	CHARLES B. WHEELER DOWNTOWN	KANSAS CITY, MO
MKG	AGL	MUSKEGON COUNTY	MUSKEGON, MI
MKK	AWP	MOLOKAI	KAUNAKAKAI, HI
MKL	ASO	MC KELLAR-SIPES REGIONAL	JACKSON, TN
MLB	ASO	MELBOURNE INTL	MELBOURNE, FL
MLU	ASW	MONROE REGIONAL	MONROE, LA
MMU	AEA	MORRISTOWN MUNI	MORRISTOWN, NJ

**Table B-4.
List of Non-Hub Towers**

Location Identifier	Region	Airport Name	City, State
MOB	ASO	MOBILE REGIONAL	MOBILE, AL
MOD	AWP	MODESTO CITY-CO-HARRY SHAM FLD	MODESTO, CA
MOT	AGL	MINOT INTL	MINOT, ND
MQY	ASO	SMYRNA	SMYRNA, TN
MRI	AAL	MERRILL FIELD	ANCHORAGE, AK
MRY	AWP	MONTEREY PENINSULA	MONTEREY, CA
MSO	ANM	MISSOULA INTERNATIONAL	MISSOULA, MT
MTN	AEA	MARTIN STATE	BALTIMORE, MD
MVY	ANE	MARTHAS VINEYARD	VINEYARD HAVEN, MA
MWA	AGL	WILLIAMSON COUNTY REGIONAL	MARION, IL
MWC	AGL	LAWRENCE J TIMMERMAN	MILWAUKEE, WI
MWH	ANM	GRANT CO INTL	MOSES LAKE, WA
MYF	AWP	MONTGOMERY FIELD	SAN DIEGO, CA
NEW	ASW	LAKEFRONT	NEW ORLEANS, LA
NQA	ASO	MILLINGTON REGIONAL JETPORT	MILLINGTON, TN
OGD	ANM	OGDEN-HINCKLEY	OGDEN, UT
OJC	ACE	JOHNSON COUNTY EXECUTIVE	OLATHE, KS
OLM	ANM	OLYMPIA	OLYMPIA, WA
OMN	ASO	ORMOND BEACH MUNI	ORMOND BEACH, FL
OPF	ASO	OPA LOCKA	MIAMI, FL
ORH	ANE	WORCESTER REGIONAL	WORCESTER, MA
ORL	ASO	EXECUTIVE	ORLANDO, FL
OSH	AGL	WITTMAN REGIONAL	OSHKOSH, WI
OSU	AGL	OHIO STATE UNIVERSITY	COLUMBUS, OH
OUN	ASW	UNIVERSITY OF OKLAHOMA WESTHEIMER	NORMAN, OK
OWB	ASO	OWENSBORO-DAVIESS COUNTY	OWENSBORO, KY
OWD	ANE	NORWOOD MEMORIAL	NORWOOD, MA
OXC	ANE	WATERBURY-OXFORD	OXFORD, CT
OXR	AWP	OXNARD	OXNARD, CA
PAE	ANM	SNOHOMISH COUNTY (PAINE FLD)	EVERETT, WA
PAH	ASO	BARKLEY REGIONAL	PADUCAH, KY
PAO	AWP	PALO ALTO ARPT OF SANTA CLARA CO	PALO ALTO, CA
POK	ASO	DEKALB-PEACHTREE	ATLANTA, GA
PDT	ANM	EASTERN OREGON REGIONAL AT PENDLETON	PENDLETON, OR
PFN	ASO	PANAMA CITY-BAY CO INTL	PANAMA CITY, FL
PIA	AGL	GREATER PEORIA REGIONAL	PEORIA, IL
PIE	ASO	ST PETERSBURG-CLEARWATER INTL	ST PETERSBURG-CLEARWATER, FL
PIH	ANM	POCATELLO REGIONAL	POCATELLO, ID
PKB	AEA	MID-OHIO VALLEY REGIONAL	PARKERSBURG, WV
PMD	AWP	PALMDALE REGIONAL/USAF PLANT 42	PALMDALE, CA
PMP	ASO	POMPANO BEACH AIRPARK	POMPANO BEACH, FL
PNE	AEA	NORTHEAST PHILADELPHIA	PHILADELPHIA, PA
POC	AWP	BRACKETT FIELD	LA VERNE, CA
POU	AEA	DUTCHESS COUNTY	POUGHKEEPSIE, NY
PPG	AWP	PAGO PAGO INTL	PAGO PAGO, AS
PRC	AWP	ERNEST A. LOVE FIELD	PRESCOTT, AZ
PSC	ANM	TRI-CITIES	PASCO, WA
PTK	AGL	OAKLAND COUNTY INTERNATIONAL	PONTIAC, MI
PUB	ANM	PUEBLO MEMORIAL	PUEBLO, CO
PWA	ASW	WILEY POST	OKLAHOMA CITY, OK
FWK	AGL	PALWAUKEE MUNI	CHICAGO/PROSPECT HEIGHTS/WHEELING, IL
RAL	AWP	RIVERSIDE MUNI	RIVERSIDE, CA
RAP	AGL	RAPID CITY REGIONAL	RAPID CITY, SD
RBD	ASW	DALLAS EXECUTIVE	DALLAS, TX
RDD	AWP	REDDING MUNI	REDDING, CA

**Table B-4.
List of Non-Hub Towers**

Location Identifier	Region	Airport Name	City, State
RDG	AEA	READING REGIONAL/CARL A SPAATZ FIELD	READING, PA
RDM	ANM	ROBERTS FIELD	REDMOND, OR
RFD	AGL	CHICAGO/ROCKFORD INTERNATIONAL	ROCKFORD, IL
RHV	AWP	REID-HILLVIEW OF SANTA CLARA COUNTY	SAN JOSE, CA
RNM	AWP	RAMONA	RAMONA, CA
RNT	ANM	RENTON MUNI	RENTON, WA
ROA	AEA	ROANOKE REGIONAL/WOODRUM FIELD	ROANOKE, VA
ROG	ASW	ROGERS MUNICIPAL-CARTER FIELD	ROGERS, AR
ROW	ASW	ROSWELL INTERNATIONAL AIR CENTER	ROSWELL, NM
RST	AGL	ROCHESTER INTERNATIONAL	ROCHESTER, MN
RYS	ASW	RICHARD LLOYD JONES JR	TULSA, OK
RYN	AWP	RYAN FIELD	TUCSON, AZ
RYY	ASO	COBB COUNTY-MC COLLUM FIELD	ATLANTA, GA
SAC	AWP	SACRAMENTO EXECUTIVE	SACRAMENTO, CA
SAF	ASW	SANTA FE MUNI	SANTA FE, NM
SAW	AGL	SAWYER INTERNATIONAL	MARQUETTE, MI
SBN	AGL	SOUTH BEND REGIONAL	SOUTH BEND, IN
SBP	AWP	SAN LUIS COUNTY REGIONAL	SAN LUIS OBISPO, CA
SBY	AEA	SALISBURY-OCEAN CITY WICOMICO REGIONAL	SALISBURY, MD
SCK	AWP	STOCKTON METROPOLITAN	STOCKTON, CA
SDL	AWP	SCOTTSDALE	SCOTTSDALE, AZ
SDM	AWP	BROWN FIELD MUNI	SAN DIEGO, CA
SEE	AWP	GILLESPIE FIELD	SAN DIEGO/EL CAJON, CA
SFF	ANM	FELTS FIELD	SPOKANE, WA
SGJ	ASO	ST AUGUSTINE	ST AUGUSTINE, FL
SGR	ASW	SUGAR LAND RGNL	HOUSTON, TX
SHV	ASW	SHREVEPORT REGIONAL	SHREVEPORT, LA
SIG	ASO	FERNANDO LUIS RIBAS DOMINICCI	SAN JUAN, PR
SJT	ASW	SAN ANGELO REGIONAL/MATHIS FIELD	SAN ANGELO, TX
SLE	ANM	M McNARY FLD	SALEM, OR
SLN	ACE	SALINA MUNI	SALINA, KS
SMO	AWP	SANTA MONICA MUNI	SANTA MONICA, CA
SMX	AWP	SANTA MARIA PUB/CAPT G ALLAN HANCOCK FLD	SANTA MARIA, CA
SNS	AWP	SALINAS MUNI	SALINAS, CA
SPG	ASO	ALBERT WHITTED	ST PETERSBURG, FL
SPI	AGL	ABRAHAM LINCOLN CAPITAL	SPRINGFIELD, IL
SQL	AWP	SAN CARLOS	SAN CARLOS, CA
SSF	ASW	STINSON MUNI	SAN ANTONIO, TX
STC	AGL	ST CLOUD REGIONAL	ST CLOUD, MN
STJ	ACE	ROSECRANS MEMORIAL	ST JOSEPH, MO
STP	AGL	ST PAUL DOWNTOWN HOLMAN FLD	ST PAUL, MN
STS	AWP	CHARLES M. SCHULZ - SONOMA COUNTY	SANTA ROSA, CA
STX	ASO	HENRY E ROHLSEN	CHRISTIANSTED, VI
SUA	ASO	WITHAM FIELD	STUART, FL
SUN	ANM	FRIEDMAN MEMORIAL	HAILEY, ID
SUS	ACE	SPIRIT OF ST LOUIS	ST LOUIS, MO
SUX	ACE	SIOUX GATEWAY/COL. BUD DAY FIELD	SIOUX CITY, IA
SWF	AEA	STEWART INTL P	NEWBURGH, NY
SWO	ASW	STILLWATER RGNL	STILLWATER, OK
TCL	ASO	TUSCALOOSA REGIONAL	TUSCALOOSA, AL
TEB	AEA	TETERBORO	TETERBORO, NJ
TIV	ANM	TACOMA NARROWS	TACOMA, WA
TIY	ASO	SPACE COAST REGIONAL	TITUSVILLE, FL
TKI	ASW	COLLIN COUNTY REGIONAL AT MC KINNEY	MC KINNEY, TX
TMB	ASO	KENDALL-TAMIAMI EXECUTIVE	MIAMI, FL

**Table B-4.
List of Non-Hub Towers**

Location Identifier	Region	Airport Name	City, State
TOA	AWP	ZAMPERINI FIELD	TORRANCE, CA
TOL	AGL	TOLEDO EXPRESS	TOLEDO, OH
TOP	ACE	PHILIP BILLARD MUNI	TOPEKA, KS
TRI	ASO	TRI-CITIES RGNL TNVA	BRISTOL/JOHNSON/KINGSPORT, TN
TTD	ANM	PORTLAND-TROUTDALE	PORTLAND, OR
TTN	AEA	TRENTON MERCER	TRENTON, NJ
TUP	ASO	TUPELO RGNL	TUPELO, MS
TVC	AGL	CHERRY CAPITAL	TRAVERSE CITY, MI
TVL	AWP	LAKE TAHOE	SOUTH LAKE TAHOE, CA
TWF	ANM	JOSLIN FIELD - MAGIC VALLEY RGNL	TWIN FALLS, ID
TXK	ASW	TEXARKANA REGIONAL-WEBB FIELD	TEXARKANA, AR
TYR	ASW	TYLER POUNDS RGNL	TYLER, TX
TZR	AGL	BOLTON FIELD	COLUMBUS, OH
UCA	AEA	ONEIDA COUNTY	UTICA, NY
UES	AGL	WAUKESHA COUNTY	WAUKESHA, WI
UGN	AGL	WAUKEGAN REGIONAL	CHICAGO/WAUKEGAN, IL
VBG	AWP	VANDENBERG AFB	LOMPOC, CA
VCV	AWP	SOUTHERN CALIFORNIA LOGISTICS	VICTORVILLE, CA
VGT	AWP	NORTH LAS VEGAS	LAS VEGAS, NV
VLD	ASO	VALDOSTA RGNL	VALDOSTA, GA
VNY	AWP	VAN NUYS	VAN NUYS, CA
VQQ	ASO	CECIL FIELD	JACKSONVILLE, FL
VRB	ASO	VERO BEACH MUNI	VERO BEACH, FL
WDG	ASW	ENID WOODRING RGNL	ENID, OK
WHP	AWP	WHITEMAN	LOS ANGELES, CA
WJF	AWP	GENERAL WM J FOX AIRFIELD	LANCASTER, CA
YIP	AGL	WILLOW RUN	DETROIT, MI
YKM	ANM	YAKIMA AIR TERMINAL/MCALLISTER FIELD	YAKIMA, WA
YNG	AGL	YOUNGSTOWN-WARREN REGIONAL	YOUNGSTOWN/WARREN, OH

Listed 359 Airports.

**Table B-5.
List of FAA Contract Towers**

Location Identifier	Region	Airport Name	City, State
ABY	ASO	SOUTHWEST GEORGIA REGIONAL	ALBANY, GA
ADM	ASW	ARDMORE MUNI	ARDMORE, OK
ADQ	AAL	KODIAK	KODIAK, AK
AEX	ASW	ALEXANDRIA INTL	ALEXANDRIA, LA
AHN	ASO	ATHENS/BEN EPPS	ATHENS, GA
AKN	AAL	KING SALMON	KING SALMON, AK
ALN	AGL	ST LOUIS REGIONAL	ALTON/ST LOUIS, IL
ALW	ANM	WALLA WALLA REGIONAL	WALLA WALLA, WA
ANE	AGL	ANOKA COUNTY-BLAINE ARPT(JANES FIELD)	MINNEAPOLIS, MN
APF	ASO	NAPLES MUNI	NAPLES, FL
ARA	ASW	ACADIANA REGIONAL	NEW IBERIA, LA
ASG	ASW	SPRINGDALE MUNI	SPRINGDALE, AR
ASH	ANE	BOIRE FIELD	NASHUA, NH
ATW	AGL	OUTAGAMIE COUNTY REGIONAL	APPLETON, WI
BAF	ANE	BARNES MUNI	WESTFIELD/SPRINGFIELD, MA
BAK	AGL	COLUMBUS MUNI	COLUMBUS, IN
BCT	ASO	BOCA RATON	BOCA RATON, FL
BDR	ANE	IGOR I SIKORSKY MEMORIAL	BRIDGEPORT, CT
BET	AAL	BETHEL	BETHEL, AK
BFM	ASO	MOBILE DOWNTOWN	MOBILE, AL
BKL	AGL	BURKE LAKEFRONT	CLEVELAND, OH
BLI	ANM	BELLINGHAM INTL	BELLINGHAM, WA
BMG	AGL	MONROE COUNTY	BLOOMINGTON, IN
BMI	AGL	CENTRAL IL REGL ARPT AT BLOOMINGTON-NORMAL	BLOOMINGTON/NORMAL, IL
BRO	ASW	BROWNSVILLE/SOUTH PADRE ISLAND INTL P	BROWNSVILLE, TX
BTL	AGL	W K KELLOGG	BATTLE CREEK, MI
BVY	ANE	BEVERLY MUNI	BEVERLY, MA
BZN	ANM	GALLATIN FIELD	BOZEMAN, MT
CGF	AGL	CUYAHOGA COUNTY	CLEVELAND, OH
CHD	AWP	CHANDLER MUNI	CHANDLER, AZ
CHO	AEA	CHARLOTTESVILLE-ALBEMARLE	CHARLOTTESVILLE, VA
CIC	AWP	CHICO MUNI	CHICO, CA
CLL	ASW	EASTERWOOD FIELD	COLLEGE STATION, TX
CNW	ASW	TSTC WACO	WACO, TX
COU	ACE	COLUMBIA REGIONAL	COLUMBIA, MO
CRE	ASO	GRAND STRAND	NORTH MYRTLE BEACH, SC
CRG	ASO	CRAIG MUNI	JACKSONVILLE, FL
CWA	AGL	CENTRAL WISCONSIN	MOSINEE, WI
CWF	ASW	CHENNAULT INTL	LAKE CHARLES, LA
CXY	AEA	CAPITAL CITY	HARRISBURG, PA
CYS	ANM	CHEYENNE REGIONAL/JERRY OLSON FIELD	CHEYENNE, WY
DBQ	ACE	DUBUQUE REGIONAL	DUBUQUE, IA
DEC	AGL	DECATUR	DECATUR, IL
DET	AGL	COLEMAN A. YOUNG MUNICIPAL	DETROIT, MI
DHN	ASO	DOTHAN RGNL	DOTHAN, AL
DTN	ASW	SHREVEPORT DOWNTOWN	SHREVEPORT, LA
DTO	ASW	DENTON MUNI	DENTON, TX
DXR	ANE	DANBURY MUNI	DANBURY, CT
EGE	ANM	EAGLE COUNTY REGIONAL	EAGLE, CO
EKO	AWP	ELKO REGIONAL	ELKO, NV

**Table B-5.
List of FAA Contract Towers**

Location Identifier	Region	Airport Name	City, State
ENA	AAL	KENAI MUNI	KENAI, AK
ENW	AGL	KENOSHA REGIONAL	KENOSHA, WI
EVB	ASO	NEW SMYRNA BEACH MUNI	NEW SMYRNA BEACH, FL
EWB	ANE	NEW BEDFORD REGIONAL	NEW BEDFORD, MA
EWN	ASO	CRAVEN COUNTY REGIONAL	NEW BERN, NC
EYW	ASO	KEY WEST INTL	KEY WEST, FL
FLG	AWP	FLAGSTAFF PULLIAM	FLAGSTAFF, AZ
FMN	ASW	FOUR CORNERS REGIONAL	FARMINGTON, NM
FMY	ASO	PAGE FIELD	FORT MYERS, FL
FOE	ACE	FORBES FIELD	TOPEKA, KS
FTY	ASO	FULTON COUNTY AIRPORT-BROWN FIELD	ATLANTA, GA
FUL	AWP	FULLERTON MUNI	FULLERTON, CA
FYV	ASW	DRAKE FIELD	FAYETTEVILLE, AR
GCK	ACE	GARDEN CITY REGIONAL	GARDEN CITY, KS
GEU	AWP	GLENDALE MUNICIPAL	GLENDALE, AZ
GJT	ANM	WALKER FIELD	GRAND JUNCTION, CO
GLH	ASO	MID DELTA RGNL	GREENVILLE, MS
GMU	ASO	GREENVILLE DOWNTOWN	GREENVILLE, SC
GNV	ASO	GAINESVILLE RGNL	GAINESVILLE, FL
GON	ANE	GROTON-NEW LONDON	GROTON (NEW LONDON), CT
GPI	ANM	GLACIER PARK INTL	KALISPELL, MT
GPM	ASW	GRAND PRAIRIE MUNI	GRAND PRAIRIE, TX
GRI	ACE	CENTRAL NEBRASKA REGIONAL	GRAND ISLAND, NE
GSN	AWP	FRANCISCO G. ADA/SAIPAN INTL	SAIPAN ISLAND, CQ
GTR	ASO	GOLDEN TRIANGLE REGIONAL	COLUMBUS/W POINT/STARKVILLE, MS
GUM	AWP	GUAM INTERNATIONAL	AGANA, GU
GYH	ASO	DONALDSON CENTER	GREENVILLE, SC
GYR	AWP	PHOENIX GOODYEAR	GOODYEAR, AZ
GYV	AGL	GARY/CHICAGO INTERNATIONAL	GARY, IN
HFD	ANE	HARTFORD-BRAINARD	HARTFORD, CT
HGR	AEA	HAGERSTOWN REGIONAL-RICHARD A HENSON FLD	HAGERSTOWN, MD
HHR	AWP	JACK NORTHROP FIELD/HAWTHORNE MUNICIPAL	HAWTHORNE, CA
HKS	ASO	HAWKINS FIELD	JACKSON, MS
HKY	ASO	HICKORY REGIONAL	HICKORY, NC
HLG	AEA	WHEELING OHIO CO	WHEELING, WV
HND	AWP	HENDERSON EXECUTIVE	LAS VEGAS, NV
HOB	ASW	LEA COUNTY RGNL	HOBBS, NM
HRL	ASW	VALLEY INTL	HARLINGEN, TX
HUM	ASW	HOUMA-TERREBONNE	HOUMA, LA
HUT	ACE	HUTCHINSON MUNI	HUTCHINSON, KS
HVN	ANE	TWEED-NEW HAVEN	NEW HAVEN, CT
HWO	ASO	NORTH PERRY	HOLLYWOOD, FL
HXD	ASO	HILTON HEAD	HILTON HEAD ISLAND, SC
HYA	ANE	BARNSTABLE MUNI-BOARDMAN/POLANDO FIELD	HYANNIS, MA
IAG	AEA	NIAGARA FALLS INTL	NIAGARA FALLS, NY
IDA	ANM	IDAHO FALLS RGNL	IDAHO FALLS, ID
IFP	AWP	LAUGHLIN/BULLHEAD INTERNATIONAL	BULLHEAD CITY, AZ
INT	ASO	SMITH REYNOLDS	WINSTON SALEM, NC
IPT	AEA	WILLIAMSPORT RGNL	WILLIAMSPORT, PA
ISM	ASO	KISSIMMEE GATEWAY	ORLANDO, FL

**Table B-5.
List of FAA Contract Towers**

Location Identifier	Region	Airport Name	City, State
ISO	ASO	KINSTON RGNL JETPORT AT STALLINGS FLD	KINSTON, NC
ITH	AEA	ITHACA TOMPKINS REGIONAL	ITHACA, NY
IWA	AWP	WILLIAMS GATEWAY	PHOENIX, AZ
IXD	ACE	NEW CENTURY AIRCENTER	OLATHE, KS
JAC	ANM	JACKSON HOLE	JACKSON, WY
JEF	ACE	JEFFERSON CITY MEML	JEFFERSON CITY, MO
JLN	ACE	JOPLIN REGIONAL	JOPLIN, MO
JQF	ASO	CONCORD REGIONAL	CONCORD, NC
JRF	AWP	KALAELOA (JOHN RODGERS FIELD)	KAPOLEI, HI
JVL	AGL	SOUTHERN WISCONSIN REGIONAL	JANESVILLE, WI
JXN	AGL	JACKSON COUNTY-REYNOLDS FIELD	JACKSON, MI
KOA	AWP	KONA INTL AT KEAHOLE	KAILUA/KONA, HI
LAL	ASO	LAKELAND LINDER RGNL	LAKELAND, FL
LAW	ASW	LAWTON-FORT SILL REGIONAL	LAWTON, OK
LBE	AEA	ARNOLD PALMER REGIONAL	LATROBE, PA
LEB	ANE	LEBANON MUNI	LEBANON, NH
LIH	AWP	LIHUE	LIHUE, HI
LMT	ANM	KLAMATH FALLS	KLAMATH FALLS, OR
LNS	AEA	LANCASTER	LANCASTER, PA
LRO	ASW	LAREDO INTL	LAREDO, TX
LSE	AGL	LA CROSSE MUNI	LA CROSSE, WI
LUK	AGL	CINCINNATI MUNI AIRPORT LUNKEN FIELD	CINCINNATI, OH
LWB	AEA	GREENBRIER VALLEY	LEWISBURG, WV
LWM	ANE	LAWRENCE MUNI	LAWRENCE, MA
LWS	ANM	LEWISTON-NEZ PERCE COUNTY	LEWISTON, ID
LYH	AEA	LYNCHBURG REGIONAL/PRESTON GLENN FLD	LYNCHBURG, VA
LZU	ASO	GWINNETT COUNTY - BRISCOE FIELD	LAWRENCEVILLE, GA
MCN	ASO	MIDDLE GEORGIA REGIONAL	MACON, GA
MDH	AGL	SOUTHERN ILLINOIS	CARBONDALE/MURPHYSBORO, IL
MEI	ASO	KEY FIELD	MERIDIAN, MS
MFE	ASW	MC ALLEN MILLER INTL	MC ALLEN, TX
MFR	ANM	ROGUE VALLEY INTERNATIONAL - MEDFORD	MEDFORD, OR
MGW	AEA	MORGANTOWN MUNI-WALTER L. BILL HART FLD	MORGANTOWN, WV
MHK	ACE	MANHATTAN RGNL	MANHATTAN, KS
MHR	AWP	SACRAMENTO MATHER	SACRAMENTO, CA
MIE	AGL	DELAWARE COUNTY - JOHNSON FIELD	MUNCIE, IN
MKK	AWP	MOLOKAI	KAUNAKAKAI, HI
MKL	ASO	MC KELLAR-SIPES REGIONAL	JACKSON, TN
MLB	ASO	MELBOURNE INTL	MELBOURNE, FL
MOD	AWP	MODESTO CITY-CO-HARRY SHAM FLD	MODESTO, CA
MOT	AGL	MINOT INTL	MINOT, ND
MQY	ASO	SMYRNA	SMYRNA, TN
MSO	ANM	MISSOULA INTERNATIONAL	MISSOULA, MT
MTN	AEA	MARTIN STATE	BALTIMORE, MD
MVY	ANE	MARTHAS VINEYARD	VINEYARD HAVEN, MA
MWA	AGL	WILLIAMSON COUNTY REGIONAL	MARION, IL
MWC	AGL	LAWRENCE J TIMMERMAN	MILWAUKEE, WI
NQA	ASO	MILLINGTON REGIONAL JETPORT	MILLINGTON, TN
OGD	ANM	OGDEN-HINCKLEY	OGDEN, UT
OJC	ACE	JOHNSON COUNTY EXECUTIVE	OLATHE, KS

**Table B-5.
List of FAA Contract Towers**

Location Identifier	Region	Airport Name	City, State
OLM	ANM	OLYMPIA	OLYMPIA, WA
OMN	ASO	ORMOND BEACH MUNI	ORMOND BEACH, FL
OPF	ASO	OPA LOCKA	MIAMI, FL
ORH	ANE	WORCESTER REGIONAL	WORCESTER, MA
OSH	AGL	WITTMAN REGIONAL	OSHKOSH, WI
OSU	AGL	OHIO STATE UNIVERSITY	COLUMBUS, OH
OUN	ASW	UNIVERSITY OF OKLAHOMA WESTHEIMER	NORMAN, OK
OWB	ASO	OWENSBORO-DAVIESS COUNTY	OWENSBORO, KY
OWD	ANE	NORWOOD MEMORIAL	NORWOOD, MA
OXC	ANE	WATERBURY-OXFORD	OXFORD, CT
OXR	AWP	OXNARD	OXNARD, CA
PAH	ASO	BARKLEY REGIONAL	PADUCAH, KY
PDT	ANM	EASTERN OREGON REGIONAL AT PENDLETON	PENDLETON, OR
PFN	ASO	PANAMA CITY-BAY CO INTL	PANAMA CITY, FL
PIH	ANM	POCATELLO REGIONAL	POCATELLO, ID
PKB	AEA	MID-OHIO VALLEY REGIONAL	PARKERSBURG, WV
PMD	AWP	PALMDALE REGIONAL/USAF PLANT 42	PALMDALE, CA
PMP	ASO	POMPANO BEACH AIRPARK	POMPANO BEACH, FL
PWA	ASW	WILEY POST	OKLAHOMA CITY, OK
RAL	AWP	RIVERSIDE MUNI	RIVERSIDE, CA
RAP	AGL	RAPID CITY REGIONAL	RAPID CITY, SD
RBD	ASW	DALLAS EXECUTIVE	DALLAS, TX
RDD	AWP	REDDING MUNI	REDDING, CA
RDM	ANM	ROBERTS FIELD	REDMOND, OR
RNM	AWP	RAMONA	RAMONA, CA
RNT	ANM	RENTON MUNI	RENTON, WA
ROG	ASW	ROGERS MUNICIPAL-CARTER FIELD	ROGERS, AR
RYN	AWP	RYAN FIELD	TUCSON, AZ
RYY	ASO	COBB COUNTY-MC COLLUM FIELD	ATLANTA, GA
SAC	AWP	SACRAMENTO EXECUTIVE	SACRAMENTO, CA
SAF	ASW	SANTA FE MUNI	SANTA FE, NM
SAW	AGL	SAWYER INTERNATIONAL	MARQUETTE, MI
SBP	AWP	SAN LUIS COUNTY REGIONAL	SAN LUIS OBISPO, CA
SBY	AEA	SALISBURY-OCEAN CITY WICOMICO REGIONAL	SALISBURY, MD
SDM	AWP	BROWN FIELD MUNI	SAN DIEGO, CA
SFF	ANM	FELTS FIELD	SPOKANE, WA
SGJ	ASO	ST AUGUSTINE	ST AUGUSTINE, FL
SGR	ASW	SUGAR LAND RGNL	HOUSTON, TX
SIG	ASO	FERNANDO LUIS RIBAS DOMINICCI	SAN JUAN, PR
SJT	ASW	SAN ANGELO REGIONAL/MATHIS FIELD	SAN ANGELO, TX
SLE	ANM	MCNARY FLD	SALEM, OR
SLN	ACE	SALINA MUNI	SALINA, KS
SMX	AWP	SANTA MARIA PUB/CAPT G ALLAN HANCOCK FLD	SANTA MARIA, CA
SNS	AWP	SALINAS MUNI	SALINAS, CA
SPG	ASO	ALBERT WHITTED	ST PETERSBURG, FL
SQL	AWP	SAN CARLOS	SAN CARLOS, CA
SSF	ASW	STINSON MUNI	SAN ANTONIO, TX
STC	AGL	ST CLOUD REGIONAL	ST CLOUD, MN
STJ	ACE	ROSECRANS MEMORIAL	ST JOSEPH, MO
STX	ASO	HENRY E ROHLSEN	CHRISTIANSTED, VI

**Table B-5.
List of FAA Contract Towers**

Location Identifier	Region	Airport Name	City, State
SUA	ASO	WITHAM FIELD	STUART, FL
SUN	ANM	FRIEDMAN MEMORIAL	HAILEY, ID
SWF	AEA	STEWART INTL P	NEWBURGH, NY
SWO	ASW	STILLWATER RGNL	STILLWATER, OK
TGL	ASO	TUSCALOOSA REGIONAL	TUSCALOOSA, AL
TIW	ANM	TACOMA NARROWS	TACOMA, WA
TIX	ASO	SPACE COAST REGIONAL	TITUSVILLE, FL
TKI	ASW	COLLIN COUNTY REGIONAL AT MC KINNEY	MC KINNEY, TX
TOP	ACE	PHILIP BILLARD MUNI	TOPEKA, KS
TTD	ANM	PORTLAND-TROUTDALE	PORTLAND, OR
TTN	AEA	TRENTON MERCER	TRENTON, NJ
TUP	ASO	TUPELO RGNL	TUPELO, MS
TVL	AWP	LAKE TAHOE	SOUTH LAKE TAHOE, CA
TXK	ASW	TEXARKANA REGIONAL-WEBB FIELD	TEXARKANA, AR
TYR	ASW	TYLER POUNDS RGNL	TYLER, TX
TZR	AGL	BOLTON FIELD	COLUMBUS, OH
UCA	AEA	ONEIDA COUNTY	UTICA, NY
UES	AGL	WAUKESHA COUNTY	WAUKESHA, WI
UGN	AGL	WAUKEGAN REGIONAL	CHICAGO/WAUKEGAN, IL
VBG	AWP	VANDENBERG AFB	LOMPOC, CA
VCV	AWP	SOUTHERN CALIFORNIA LOGISTICS	VICTORVILLE, CA
VLD	ASO	VALDOSTA RGNL	VALDOSTA, GA
VQQ	ASO	CECIL FIELD	JACKSONVILLE, FL
WDG	ASW	ENID WOODRING RGNL	ENID, OK
WHP	AWP	WHITEMAN	LOS ANGELES, CA
WJF	AWP	GENERAL WM J FOX AIRFIELD	LANCASTER, CA
XNA	ASW	NORTHWEST ARKANSAS RGNL	FAYETTEVILLE/SPRINGDALE/, AR
YKM	ANM	YAKIMA AIR TERMINAL/MCALLISTER FIELD	YAKIMA, WA

Listed 228 Airports.