



Federal Aviation
Administration

Terminal Area Forecast Summary

Fiscal Years 2017-2045

Preface

This publication provides aviation data users with summary historical and forecast statistics on passenger demand and aviation activity at U.S. airports. The summary level forecasts are based on individual airport projections.

The Terminal Area Forecast (TAF) includes forecasts for active airports in the National Plan of Integrated Airport Systems (NPIAS). The Federal Aviation Administration's (FAA) Forecast and Performance Analysis Division, Office of Aviation Policy and Plans, develops the TAF. As its primary input, the TAF initially used the national forecasts of aviation activity contained in FAA Aerospace Forecasts, Fiscal Years 2017-2037. The final TAF considers the forecasts and assumptions contained in FAA Aerospace Forecasts, Fiscal Years 2018-2038. Beginning March 16, 2018 the tables for the national forecasts can be found at:

http://www.faa.gov/data_research/aviation/aerospace_forecasts/

The TAF is available on the Internet. The TAF model and TAF database can be accessed at:

http://www.faa.gov/data_research/aviation/taf

The TAF model allows users to create their own forecast scenarios. It contains a query data application that allows the public to access and print historical (1990 to 2016) and forecast (2017 to 2045) aviation activity data by individual airport, state, or FAA region.

The FAA welcomes public comment on the forecasts, as well as suggestions for improving the usefulness of the TAF.

Roger Schaufele, Jr.
Manager
Forecast and Performance Analysis Division
Office of Aviation Policy and Plans

Acknowledgements

This document was prepared by the Forecast and Performance Analysis Division of the FAA Office of Aviation Policy and Plans under the direction of Roger Schaufele, Manager, and Michael Lukacs, Deputy Division Manager, Forecast and Performance Analysis Division. The forecasts were prepared by Peter LeBoff, Dipasis Bhadra, Li Ding, Chia-Mei Liu, Anna Barlett, and Gary Mihalik.

The software support was provided under contract by IT WORKS! Software. We extend a special thanks to Alice Dobrin and Damien Agostinelli whose invaluable programming support for the TAF software made accessing and analyzing this airport data so much more efficient.

Special acknowledgments are made to FAA Airports staff in the Regional and Airport District Offices for their assistance in coordinating the regional reviews, state input, and forecast recommendations. The reviews and comments of the regional offices were extremely important and useful in guiding the Forecast and Performance Analysis Division in making adjustments to the preliminary version of the forecasts. Their efforts have enhanced the accuracy and credibility of the final product.

Table of Contents

Preface.....	i
Acknowledgements	ii
Table of Contents.....	iii
Summary Historical and Forecast Highlights	1
Forecast Process	3
Introduction	3
Forecast Method.....	4
Forecast Review Process.....	5
Data Sources	5
TAF and National Forecast Summary.....	7
Near-Term Forecasts.....	7
National Forecast Trends	7
Trends by Region.....	7
Large, Medium, and Small Hubs	8
Large Hub Airports.....	9
TAF and National Forecast Tables.....	10
Appendix A: Description of Activity Measures	11
Air Carrier Enplanements.....	11
Regional Enplanements	11
Aircraft Operations	11
Local Operations	12
Itinerant Operations	12
Tracon Operations	12
Overflights.....	12
Appendix B: List of FAA Towers by Hub Size and FAA Contract Towers	13
Table B-1 List of Large Hub Towers	14
Table B-2 List of Medium Hub Towers	15
Table B-3 List of Small Hub Towers.....	16

Table B-3 List of Small Hub Towers..... 17

Table B-4 List of Non-Hub Towers 18

Table B-5 List of FAA Contract Towers 27

Summary Historical and Forecast Highlights

- A total of 822.5 million passengers were enplaned at U.S. airports in 2016; FAA and Federal contract towered airports accounted for 818.0 million enplanements.
- The top 100 air carrier airports accounted for 777.7 million enplanements in 2016, or 95 percent of total U.S. enplanements.
- FAA towers handled 35.8 million operations (takeoffs and landings) in 2016, including 20.2 million commercial aircraft operations.
- FAA contract towers handled 14.2 million operations in 2016, including 1.8 million commercial operations.
- The 30 large hub airports¹ enplaned 597.8 million passengers in 2016. These airports are projected to enplane 1.1 billion passengers in 2045, an 83.1 percent increase over the 29-year period (or 2.1 percent annually).
- The 31 medium hub airports² recorded 128.4 million enplanements in 2016. These airports are projected to enplane 237.1 million passengers in 2045, an 84.7 percent increase over the 29-year period (or 2.1 percent annually).
- Atlanta (50.3 million enplanements), Los Angeles (38.9 million), Chicago O'Hare (37.4 million), Dallas/Ft. Worth (31.4 million), and John F. Kennedy (29.0 million) led U.S. commercial airports in passenger enplanements, accounting for 22.7 percent of enplanements at U.S. airports.
- Atlanta is projected to remain the country's busiest airport, as measured by passenger enplanements, through the forecast period with a projected 85.2 million enplaned passengers in 2045. Los Angeles is projected to enplane the second most passengers (75.3 million) in 2045, followed by Chicago O'Hare with 68.5 million enplanements.
- Enplanements at Ft. Lauderdale, San Diego, Boston, and Newark airports are projected to grow fastest among the large hub airports. The annual growth rates at these airports are forecast to increase by 2.9, 2.7, 2.7, and 2.6 percent per year, respectively, over the forecast period.

¹ Airports enplaning one percent or more of total enplanements.

² Airports enplaning 0.25 to 0.99 percent of total enplanements.

- In terms of total operations, Atlanta was the busiest U.S. airport in 2016 with 889,000 aircraft operations. Chicago O'Hare and Dallas/Ft. Worth were the second and third busiest airports with 872,000 and 686,000 operations, respectively.
- In 2045, Atlanta is expected to be the busiest airport in the nation, as measured by total operations, with a projected 1.38 million operations. Chicago O'Hare (1.29 million operations) is projected to be in second place and Los Angeles (1.21 million operations) is projected to be in third place.
- The FAA's Southern region airports enplaned more passengers than any other region with 190.4 million passengers in 2016, or 23 percent of U.S. enplanements. The Western Pacific region was second with 170.6 million enplanements, or 21 percent of the total.
- The Southern region is expected to lead in passenger enplanements in 2045, reaching 348.0 million. The Western Pacific region is projected to stay in second place with 329.8 million enplanements.
- The Southern region led all FAA regions in the number of airport operations with 22.4 million in 2016. The Southern region is expected to remain first in 2045 with 27.0 million operations. The Western Pacific and Great Lakes regions ran second and third in airport operations in 2016 with 16.6 and 14.9 million, respectively. In 2045, the Western Pacific region is projected to remain in second place with 20.5 million operations and the Great Lakes region is projected to remain in third place with 17.4 million operations.

Forecast Process

Introduction

The Terminal Area Forecast (TAF) contains historical and forecast data for enplanements, airport operations, tracon operations, and based aircraft. The data cover 264 FAA towered airports, 253 Federal contract tower airports, 31 terminal radar approach control facilities, and 2,814 non FAA airports. Data in the TAF are presented on a U.S. Government fiscal year basis (October through September).

The TAF is available on the Internet. The TAF model and TAF database can be accessed at:

http://www.faa.gov/data_research/aviation/taf

The TAF model allows users to create their own forecast scenarios. The TAF database allows public access to historical and forecast aviation activity data by individual airport, state, or FAA region. In addition, links to the TAF from previous years are available via the address noted above.

The TAF is prepared to assist the FAA in meeting its planning, budgeting, and staffing requirements. In addition, state aviation authorities and other aviation planners use the TAF as a basis for planning airport improvements.

This document presents a set of summary tables on airport activity statistics. The airport activity data contained in the TAF consist of the following:

- **enplanements** (sum of originating and connecting passengers) for air carriers and regionals;
- **itinerant operations** for air carriers, commuters and air taxis, general aviation (GA), and military aircraft;
- **local operations** for civil and military aircraft; and
- **tracon operations** for aircraft operations under radar control.

Data on operations presented in the TAF show historical information from 1990 through 2016 and forecasts for 2017 to 2045.³ The historical enplanement information in the TAF is from 1976 through 2016 and the 2017 figures represent estimates. The enplanement forecasts are from 2018 to 2045. Appendix A provides a detailed description of the activity data elements in the TAF. Appendix B provides a list of FAA airports by hub size and a list of FAA contract towers.

³ Operations data for FAA towers and Federal contract towers for 2017 are actual.

Forecast Method

The TAF assumes a demand driven forecast for aviation services based upon local and national economic conditions as well as conditions within the aviation industry. In other words, an airport's forecast is developed independent of the ability of the airport and the air traffic control system to furnish the capacity required to meet demand. However, if the airport historically functions under constrained conditions, the FAA forecast may reflect those constraints since they are embedded in historical data. In statistical terms, the relationships between economic growth data and data representing growth in aviation activity reflect those constraints.

The forecasts of passenger enplanements and commercial operations at airports with more than 100,000 enplanements in FY 2016 are based on a bottoms-up approach. The domestic enplanements are forecast by generating origin and destination (O&D) market demand forecasts using the DB1B (quarterly 10% sample) data to model passenger flow on a quarterly basis. The O&D passenger demand forecasts are based on regression analysis using fares, regional demographics, and regional economic factors as the independent variables. The O&D forecasts are then combined with DOT T-100 segment data to generate passenger forecasts by airport pair and segment pair. The segment pair passenger forecasts are assigned to aircraft equipment in order to produce segment pair operation forecasts. The quarterly segment pair forecasts are aggregated to produce annual airport forecasts.

Separate models are used to forecast international passenger enplanements and operations and cargo operations. The international passenger enplanements are forecast on a quarterly basis using time series analysis and T-100 segment data. The segment pair passenger enplanement forecasts are used to generate segment pair operation forecasts. The cargo operation forecasts are also generated on a quarterly basis using time series analysis and T-100 segment data. The segment pair forecasts for international passenger enplanements and operations and cargo operations are aggregated to the market pair and airport level on an annual basis.

The short run (2 year) forecasts of passenger enplanements and operations for airports with more than 100,000 enplanements in FY 2016 incorporate the use of future airline schedules.

The forecasts of passenger enplanements at FAA facilities with fewer than 100,000 enplanements in FY 2016 are based on analysis of historic trends. The commercial operations forecasts are based on the enplanement forecasts, trend analysis, and enplanements per operation. In addition the commercial forecasts for these airports may be prorated in comparison to national forecast trends by category.

Forecasts of itinerant general aviation operations and local civil operations at FAA facilities are based primarily on time series analysis. Because military operations forecasts have national security implications, the Department of Defense (DOD) provides only limited information on future aviation activity. Hence, the TAF projects military activity at its present level except when FAA has specific knowledge of a change. For instance, DOD may announce a base closing or may shift an Air Force wing from one base to another.

For non-FAA facilities, historic operations in the TAF are from the Form 5010 data. These operations levels are held constant for the forecast unless otherwise specified by a local or regional FAA official.

Forecast Review Process

Initially, FAA headquarters staff and management review forecasts for airports with more than 100,000 enplanements in FY 2016 and FAA facilities with fewer than 100,000 enplanements in FY 2016. These preliminary estimates are then submitted to FAA regional and district offices for review. Suggested changes made by the FAA regional staff are reviewed and, if determined reasonable by APO staff economists, are incorporated into the TAF. Significant increases in commercial activity forecasts are normally incorporated into the TAF only where APO receives verifiable evidence of a firm commitment by an air carrier or regional airline to initiate new service.

Summary statistics presented in the TAF differ from the national totals contained in FAA Aerospace Forecasts, Fiscal Years 2018-2038. Reasons for the differences are threefold. First, the TAF forecast methods consider airport and market specific trends. Second, the TAF and national forecast measurements vary. For example, the TAF includes facilities not serviced by the FAA in its totals. These facilities make up a large share of total general aviation operations. In addition, the TAF includes enplanements at U.S. airports only, whereas the national forecast includes enplanements on U.S. airlines at both U.S. and foreign airports. Finally, individual forecasts are not scaled to force aggregates to equal national totals.

Data Sources

The development of the TAF begins with an update of the latest historical enplanement, operation, and based aircraft statistics, using information derived from several sources. FAA's National Flight Data Center provides general airport information such as the airport name, location, and location identifier. Airport operations and tracon (radar assisted) operations data for airports with FAA and Federal contract air traffic control services are reported by FAA air traffic and Federal contract tower staff. Operations at non FAA airports are taken from FAA Form 5010 reports on aviation activity at the

airport as estimated by FAA inspectors or information provided by airport managers, state aviation activity surveys, and other sources.

U.S. domestic and international (U.S. and foreign flag carriers) enplanements are derived from the Department of Transportation's (DOT's) T-100 database. Regional carrier enplanements are derived from DOT T-100 and 298-C data.⁴

The origin and destination (O&D) data are based on the Airline Origin and Destination Survey (DB1B). This is a 10 percent sample of airline tickets from carriers reporting to the Office of Airline Information at the Bureau of Transportation Statistics.

Based aircraft data are collected by FAA inspectors, airport managers, and state aviation officials and reported on FAA Form 5010. These data show numbers of aircraft, mostly general aviation aircraft, permanently based at an airport.

⁴ In October 2002, DOT began collecting data for all airlines using the T-100 format. This change provides more detail on regional airlines, who previously reported on Form 298-C.

TAF and National Forecast Summary

Near-Term Forecasts

In 2017 total operations at FAA and contract towers increased 0.7 percent, commercial operations increased 1.0 percent, and non-commercial operations increased 0.3 percent based on OPSNET. Total enplanements at all airports were estimated to increase 3.3 percent in 2017.

In 2018 total operations at towers are forecast to increase 1.4 percent. This forecast increase in total operations at FAA and contract towers is attributable to forecast increases in air carrier (4.2 percent), itinerant general aviation (0.2 percent), and local civil operations (1.8 percent). The forecast increase in air carrier operations (aircraft with more than 60 seats) is attributable, in part, to a shift away from air taxi/commuter operations (aircraft with 60 or fewer seats) as a result of the substitution of larger aircraft for smaller regional jets. Total enplanements at all airports are forecast to increase 4.8 percent in 2018.

National Forecast Trends

Trends at individual airports reflect to varying degrees national aviation trends as well as the dynamics at individual airports. The national forecasts for FAA and contract towered airports in FAA Aerospace Forecasts, Fiscal Years 2017-2037 show aircraft operations growing at an average annual rate of 0.8 percent over the 21-year forecast period. Average annual growth rates for this period by user group are as follows: air carrier, 2.3 percent; air taxi/commuter, -0.9 percent; itinerant general aviation, 0.3 percent; and local civil, 0.4 percent. The projected average annual rate of increase for enplanements on U.S. mainline and regional carriers from the national forecast is 1.9 percent over the 21-year forecast period.

Trends by Region

There are 264 FAA towers and 253 Federal contract towers in the TAF. California had the most FAA towers with 33, followed by Texas with 19 and Florida with 18. Regions with the most FAA towers were Southern with 51, Great Lakes with 48, and Western Pacific with 46. Table S-3 presents the number of FAA and Federal contract towers by region and state.

Tables S-6 through S-11 summarize airport operations, tracon operations, enplanements, and based aircraft by region from 2013 through 2045. The Southern (22.4 million operations), Western Pacific (16.6 million), and Great Lakes (14.9 million) regions ranked as the top three FAA regions in airport operations in 2016. Operations

for all TAF airports totaled 97.4 million. The Northwest Mountain and Western Pacific regions are projected to be the fastest growing FAA regions from 2016 to 2045 in terms of airport operations, increasing 36 percent and 23 percent, respectively.

The Southern region led FAA regions in passengers enplaned with 190.4 million in 2016, followed by the Western Pacific region with 170.6 million passengers. Enplanements in the New England region are projected to increase the most in percentage terms increasing 100 percent from 2016 to 2045. The next two regions with the fastest projected increase in enplanements are Western Pacific (93 percent) and Northwest Mountain (93 percent).

In 2016, there was a national total of 173,800 based aircraft. Southern (32,900 aircraft), Western Pacific (28,900), and Great Lakes (28,400) ranked as the top three FAA regions.

Large, Medium, and Small Hubs

Table S-5 presents passenger enplanements and airport operations at FAA and contract towers by hub size. An airport qualifies as a large hub with one percent or more of total U.S. passenger enplanements. A medium hub airport enplanes from 0.25 to 0.99 percent of total U.S. passenger enplanements while small and non-hub airports enplane from 0.05 to 0.249 percent and less than 0.05 percent, respectively. Appendix B contains a list of hub airports classified by size (large, medium, small, and non-hub) as well as a list of Federal contract towers.

The 30 large hub airports enplaned 597.8 million passengers in 2016 while the 30 medium and 70 small hub airports enplaned 128.4 and 68.1 million passengers, respectively. The 387 non-hub airports enplaned 23.7 million passengers. Enplanements at large hubs are expected to increase at an annual rate of 2.11 percent over the 2016 to 2045 forecast period. Medium and small hub airports are forecast to increase 2.14 percent and 2.12 percent annually, respectively, during the forecast period.

Operations at large hub airports totaled 12.8 million in 2016 compared to 4.6 million and 6.6 million at medium and small hub airports, respectively. Operations at large hub airports are forecast to increase at an annual rate of 1.59 percent from 2016 to 2045, growing to 20.2 million. Operations at the medium hubs are forecast to rise at an annual rate of 1.37 percent from 2016 to 2045; aircraft operations at small hub airports are forecast to grow 0.88 percent per year.

In 2016 non-hub airports accounted for 26.0 million operations or 52 percent of total operations at FAA and Federal contract towers. General aviation aircraft operations accounted for the majority of operations at these smaller airports.

Large Hub Airports

Table S-1 presents enplanement forecast summaries for the large hub airports. Atlanta was the busiest airport in 2016 (50.3 million enplanements), followed by Los Angeles (38.9 million), Chicago O'Hare (37.4 million), and Dallas/Ft. Worth (31.4 million). Los Angeles is forecast to have the strongest growth in enplanements among the top four airports, increasing at an annual rate of 2.3 percent over the 2016 to 2045 forecast period. Chicago O'Hare, Dallas/Ft. Worth, and Atlanta are forecast to increase 2.1, 2.1, and 1.8 percent per year, respectively, over the forecast period. Graph S-1 shows relative enplanements growth over the next 29 years. The four airports with the fastest projected increase are Ft. Lauderdale, San Diego, Boston, and Newark.

San Diego is projected to make the largest upward movement in ranking of enplanements, from 27th to 21st. LaGuardia and Washington National are projected to make the largest drops in rankings, going from 20th to 26th and 23rd to 29th, respectively.

Table S-2 presents operations forecast summaries for the large hub airports. In 2016, FAA controllers at Atlanta handled 899,000 landings and takeoffs, followed by Chicago O'Hare, which totaled 872,000 operations. The next busiest airports were Los Angeles and Dallas/Ft. Worth with 686,000 and 677,000 airport operations, respectively.

In 2045, Atlanta is projected to stay in first place with 1.38 million operations. Chicago O'Hare (1.29 million operations), Los Angeles (1.21 million operations), and Dallas/Ft. Worth (1.11 million operations) are projected to stay in second, third, and fourth place, respectively.

Graph S-2 shows that the five airports projected to grow the fastest in operations are San Diego, Seattle, Ft. Lauderdale, San Francisco, and Boston. Seattle is expected to move into the list of the top 10 busiest airports; Houston Intercontinental is expected to drop out of the top 10 ranking.

TAF and National Forecast Tables

Table S-1 Enplanements at Large Hub Airports (in thousands)

Loc ID	Region	Airport Name						Rate** 2016- 2045	Airport ranking	
			2016	2016 Percent*	2017	2021	2045		2016	2045
ATL	ASO	HARTSFIELD - JACKSON ATLANTA INTL	50,347	6.12	50,550	54,459	85,208	1.83	1	1
LAX	AWP	LOS ANGELES INTL	38,861	4.72	40,869	45,870	75,319	2.31	2	2
ORD	AGL	CHICAGO O'HARE INTL	37,351	4.54	38,281	43,329	68,476	2.11	3	3
DFW	ASW	DALLAS-FORT WORTH INTL	31,433	3.82	31,567	35,563	56,877	2.07	4	4
JFK	AEA	JOHN F KENNEDY INTL	28,997	3.53	29,437	32,116	53,978	2.17	5	5
DEN	ANM	DENVER INTL	27,823	3.38	29,622	32,483	49,816	2.03	6	7
SFO	AWP	SAN FRANCISCO INTL	25,394	3.09	26,580	31,127	52,915	2.56	7	6
LAS	AWP	MC CARRAN INTL	22,497	2.74	23,136	25,426	41,053	2.10	8	9
CLT	ASO	CHARLOTTE/DOUGLAS INTL	21,755	2.64	21,791	24,128	40,173	2.14	9	12
SEA	ANM	SEATTLE-TACOMA INTL	21,500	2.61	22,460	25,672	44,189	2.52	10	8
MIA	ASO	MIAMI INTL	21,079	2.56	20,819	22,808	35,507	1.81	11	16
PHX	AWP	PHOENIX SKY HARBOR INTL	20,978	2.55	21,145	22,746	36,333	1.91	12	15
IAH	ASW	GEORGE BUSH INTERCONTINENTAL/HOUSTON	20,381	2.48	19,809	22,572	37,674	2.14	13	13
MCO	ASO	ORLANDO INTL	19,978	2.43	21,298	24,822	40,467	2.46	14	11
EWR	AEA	NEWARK LIBERTY INTL	19,570	2.38	21,216	24,747	40,803	2.57	15	10
MSP	AGL	MINNEAPOLIS-ST PAUL INTL/WOLD- CHAMBERLAIN	18,025	2.19	18,334	19,744	29,156	1.67	16	18
BOS	ANE	GENERAL EDWARD LAWRENCE LOGAN INTL	17,392	2.11	18,522	21,816	37,201	2.66	17	14
DTW	AGL	DETROIT METROPOLITAN WAYNE COUNTY	16,769	2.04	16,948	17,903	25,236	1.42	18	19
PHL	AEA	PHILADELPHIA INTL	14,848	1.81	14,169	15,609	23,663	1.62	19	20
LGA	AEA	LAGUARDIA	14,783	1.80	14,437	16,654	19,074	0.88	20	26
FLL	ASO	FORT LAUDERDALE/HOLLYWOOD INTL	13,857	1.68	15,597	18,624	31,761	2.90	21	17
BWI	AEA	BALTIMORE/WASHINGTON INTL THURGOOD MARSHALL	12,172	1.48	12,844	14,477	21,650	2.01	22	22
DCA	AEA	RONALD REAGAN WASHINGTON NATIONAL	11,476	1.40	11,521	13,073	15,810	1.11	23	29
SLC	ANM	SALT LAKE CITY INTL	11,002	1.34	11,516	12,848	20,454	2.16	24	23
MDW	AGL	CHICAGO MIDWAY INTL	10,980	1.33	10,955	11,964	19,611	2.02	25	24
IAD	AEA	WASHINGTON DULLES INTL	10,498	1.28	10,894	12,080	19,256	2.11	26	25
SAN	AWP	SAN DIEGO INTL	10,254	1.25	10,913	13,243	22,442	2.74	27	21
HNL	AWP	HONOLULU INTL	9,669	1.18	9,884	10,505	14,935	1.51	28	30
TPA	ASO	TAMPA INTL	9,197	1.12	9,493	11,203	17,330	2.21	29	28
PDX	ANM	PORTLAND INTL	8,899	1.08	9,414	10,760	18,313	2.52	30	27
Total			597,765	72.67	614,020	688,371	1,094,682	2.11		

*Percent of total US enplanements.

**Annual compound growth rate.

Graph S-1 Enplanements Growth Rates for the Large Hub

Airports Fiscal Years 2016 to 2045

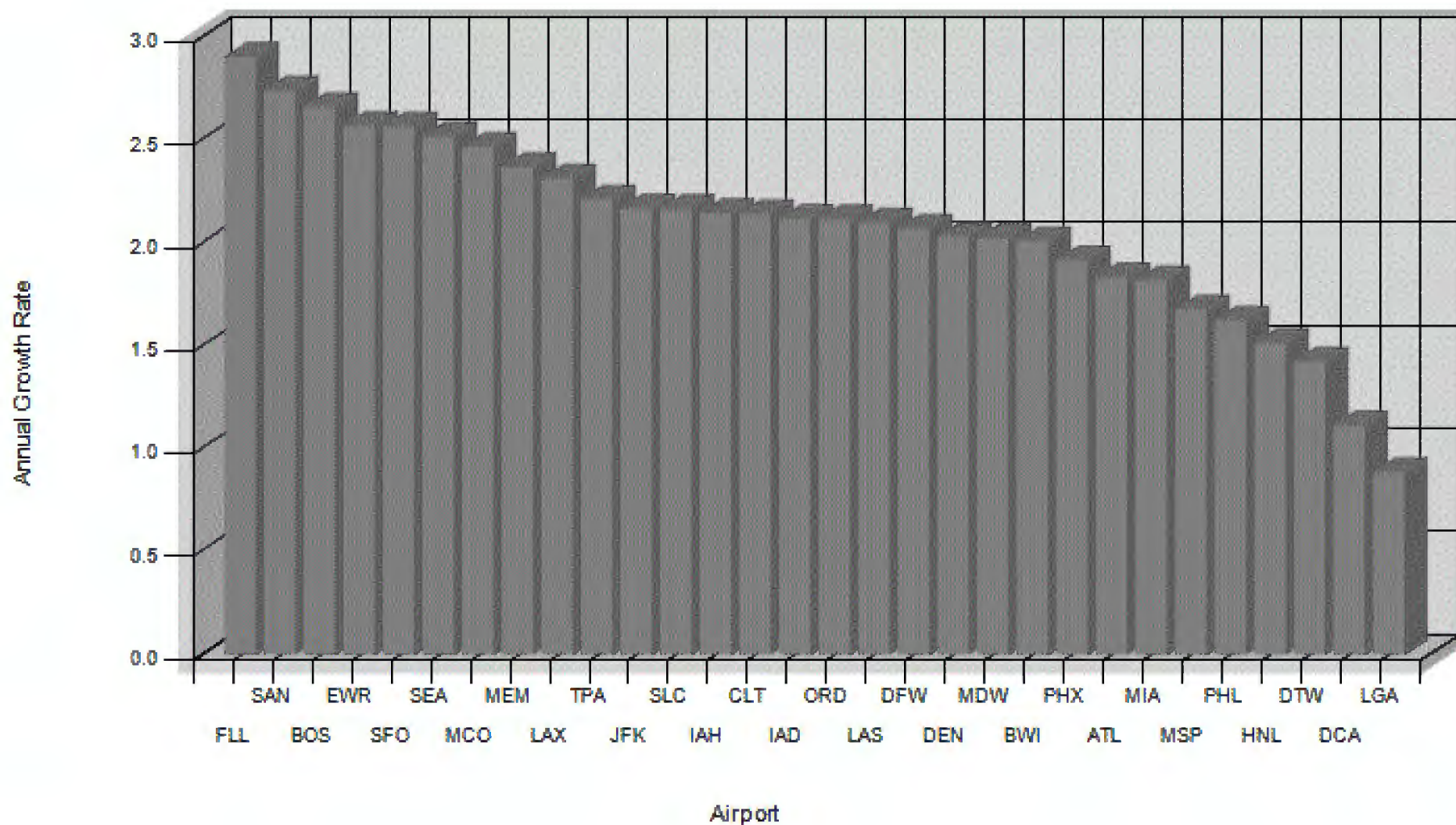


Table S-2 Airport Operations at Large Hub Airports (in thousands)

Loc ID	Region	Airport Name	2016	2016		2017	2021	2045	Rate** 2016- 2045	Airport ranking	
				Percent*						2016	2045
ATL	ASO	HARTSFIELD - JACKSON ATLANTA INTL	899	0.92	885	918	1,379	1.49		1	1
ORD	AGL	CHICAGO O'HARE INTL	872	0.90	859	875	1,291	1.36		2	2
LAX	AWP	LOS ANGELES INTL	686	0.70	703	759	1,211	1.98		3	3
DFW	ASW	DALLAS-FORT WORTH INTL	677	0.70	656	715	1,112	1.73		4	4
DEN	ANM	DENVER INTL	566	0.58	584	585	851	1.41		5	7
CLT	ASO	CHARLOTTE/DOUGLAS INTL	546	0.56	552	590	937	1.88		6	5
LAS	AWP	MC CARRAN INTL	533	0.55	544	583	869	1.70		7	6
IAH	ASW	GEORGE BUSH INTERCONTINENTAL/HOUSTON	480	0.49	452	453	674	1.18		8	14
JFK	AEA	JOHN F KENNEDY INTL	459	0.47	454	481	747	1.69		9	10
SFO	AWP	SAN FRANCISCO INTL	447	0.46	453	516	832	2.16		10	8
PHX	AWP	PHOENIX SKY HARBOR INTL	442	0.45	432	462	719	1.69		11	13
EWR	AEA	NEWARK LIBERTY INTL	428	0.44	441	473	722	1.82		12	11
MIA	ASO	MIAMI INTL	417	0.43	409	427	604	1.29		13	15
MSP	AGL	MINNEAPOLIS-ST PAUL INTL/WOLD- CHAMBERLAIN	411	0.42	415	424	592	1.27		14	16
SEA	ANM	SEATTLE-TACOMA INTL	408	0.42	414	460	776	2.24		15	9
PHL	AEA	PHILADELPHIA INTL	402	0.41	372	375	524	0.92		16	20
BOS	ANE	GENERAL EDWARD LAWRENCE LOGAN INTL	395	0.41	401	454	722	2.10		17	12
DTW	AGL	DETROIT METROPOLITAN WAYNE COUNTY	392	0.40	394	397	535	1.08		18	19
LGA	AEA	LAGUARDIA	375	0.38	366	380	386	0.11		19	27
MCO	ASO	ORLANDO INTL	323	0.33	332	372	583	2.05		20	17
SLC	ANM	SALT LAKE CITY INTL	318	0.33	325	342	494	1.53		21	21
HNL	AWP	HONOLULU INTL	308	0.32	312	315	415	1.04		22	23
DCA	AEA	RONALD REAGAN WASHINGTON NATIONAL	300	0.31	298	309	310	0.11		23	29
IAD	AEA	WASHINGTON DULLES INTL	291	0.30	294	315	446	1.47		24	22
FLL	ASO	FORT LAUDERDALE/HOLLYWOOD INTL	287	0.29	306	347	539	2.20		25	18
MDW	AGL	CHICAGO MIDWAY INTL	252	0.26	252	266	400	1.60		26	26
BWI	AEA	BALTIMORE/WASHINGTON INTL THURGOOD MARSHALL	248	0.25	258	280	401	1.67		27	25
PDX	ANM	PORTLAND INTL	226	0.23	229	240	382	1.82		28	28
SAN	AWP	SAN DIEGO INTL	196	0.20	205	245	402	2.51		29	24
TPA	ASO	TAMPA INTL	189	0.19	193	215	308	1.70		30	30
Total			12,772	13.12	12,789	13,572	20,165	1.59			

*Percent of total US operations.

**Annual compound growth rate.

Graph S-2 Airport Operations Growth Rates for the Large Hub

Airports Fiscal Years 2016 to 2045

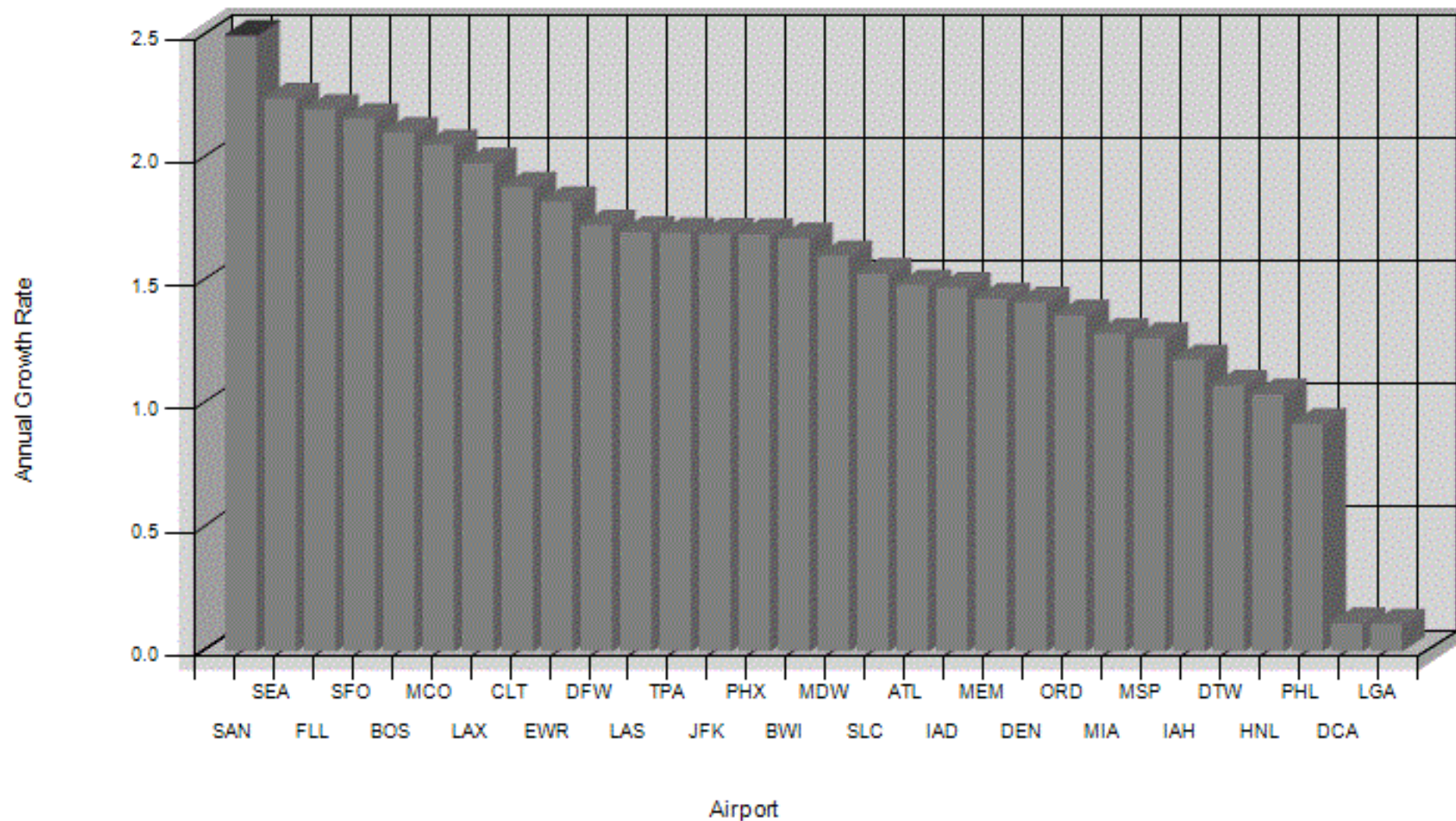


Table S-3 Air Traffic Control Towers and Contract Towers by Region and State

Region/State	FAA Towers	Contract Towers
Alaskan Region		
Alaska	4	4
Regional Total	4	4
Central Region		
Iowa	4	1
Kansas	1	8
Missouri	5	5
Nebraska	2	1
Regional Total	12	15
Eastern Region		
Delaware	1	0
District of Columbia	3	0
Maryland	2	5
New Jersey	5	1
New York	12	5
Pennsylvania	9	5
Virginia	4	2
West Virginia	3	4
Regional Total	39	22
Great Lakes Region		
Illinois	11	6
Indiana	6	4
Michigan	11	4
Minnesota	6	2
North Dakota	3	1
Ohio	7	5
South Dakota	1	1
Wisconsin	3	9
Regional Total	48	32
New England Region		
Connecticut	1	6
Maine	2	0
Massachusetts	3	8
New Hampshire	1	2
Rhode Island	1	0
Vermont	1	0
Regional Total	9	16

Region/State	FAA Towers	Contract Towers
Northwest Mountain Region		
Colorado	6	3
Idaho	2	4
Montana	3	3
Oregon	3	8
Utah	1	2
Washington	6	7
Wyoming	1	2
Regional Total	22	29
Southern Region		
Alabama	4	3
Florida	18	25
Georgia	5	6
Kentucky	4	2
Mississippi	2	7
North Carolina	6	5
Puerto Rico	1	2
South Carolina	5	4
Tennessee	5	3
Virgin Islands	1	1
Regional Total	51	58
Southwestern Region		
Arkansas	2	5
Louisiana	7	5
New Mexico	2	4
Oklahoma	3	6
Texas	19	23
Regional Total	33	43
Western Pacific Region		
Arizona	7	7
California	33	20
Guam	0	1
Hawaii	3	4
Nevada	3	1
Northern Mariana Isl	0	1
Regional Total	46	34
Grand Total	264	253

Table S-4 Ranking of Top 100 FAA Towers by Total Enplanements, FY 2016

Rank	City	State	Location Identifier	Enplaned Passengers*	Percent of Total**	Cumulative Enplanements	Cumulative Percentage	Commercial Operations***	Cumulative Operations
1	ATLANTA	GA	ATL	50,346,891	6.12	50,346,891	6.12	890,847	890,847
2	LOS ANGELES	CA	LAX	38,861,390	4.72	89,208,281	10.85	660,115	1,550,962
3	CHICAGO	IL	ORD	37,351,189	4.54	126,559,470	15.39	865,270	2,416,232
4	DALLAS-FORT WORTH	TX	DFW	31,432,560	3.82	157,992,030	19.21	669,847	3,086,079
5	NEW YORK	NY	JFK	28,996,956	3.53	186,988,986	22.73	450,186	3,536,265
6	DENVER	CO	DEN	27,823,360	3.38	214,812,346	26.12	561,547	4,097,812
7	SAN FRANCISCO	CA	SFO	25,394,139	3.09	240,206,485	29.20	431,673	4,529,485
8	LAS VEGAS	NV	LAS	22,496,868	2.74	262,703,353	31.94	488,745	5,018,230
9	CHARLOTTE	NC	CLT	21,755,247	2.64	284,458,600	34.58	518,561	5,536,791
10	SEATTLE	WA	SEA	21,500,245	2.61	305,958,845	37.20	404,244	5,941,035
11	MIAMI	FL	MIA	21,078,999	2.56	327,037,844	39.76	397,454	6,338,489
12	PHOENIX	AZ	PHX	20,977,638	2.55	348,015,482	42.31	417,870	6,756,359
13	HOUSTON	TX	IAH	20,381,015	2.48	368,396,497	44.79	468,135	7,224,494
14	ORLANDO	FL	MCO	19,977,842	2.43	388,374,339	47.22	307,905	7,532,399
15	NEWARK	NJ	EWR	19,569,534	2.38	407,943,873	49.60	416,329	7,948,728
16	MINNEAPOLIS	MN	MSP	18,025,226	2.19	425,969,099	51.79	396,151	8,344,879
17	BOSTON	MA	BOS	17,392,255	2.11	443,361,354	53.90	379,148	8,724,027
18	DETROIT	MI	DTW	16,768,873	2.04	460,130,227	55.94	386,147	9,110,174
19	PHILADELPHIA	PA	PHL	14,848,015	1.81	474,978,242	57.75	387,510	9,497,684
20	NEW YORK	NY	LGA	14,782,532	1.80	489,760,774	59.54	368,202	9,865,886
21	FORT LAUDERDALE	FL	FLL	13,857,169	1.68	503,617,943	61.23	250,288	10,116,174
22	BALTIMORE	MD	BWI	12,172,244	1.48	515,790,187	62.71	231,714	10,347,888
23	WASHINGTON	DC	DCA	11,476,058	1.40	527,266,245	64.10	293,138	10,641,026
24	SALT LAKE CITY	UT	SLC	11,001,869	1.34	538,268,114	65.44	268,757	10,909,783
25	CHICAGO	IL	MDW	10,979,763	1.33	549,247,877	66.77	212,911	11,122,694
26	WASHINGTON	DC	IAD	10,498,491	1.28	559,746,368	68.05	254,641	11,377,335
27	SAN DIEGO	CA	SAN	10,253,740	1.25	570,000,108	69.30	184,874	11,562,209
28	HONOLULU	HI	HNL	9,668,758	1.18	579,668,866	70.47	244,612	11,806,821
29	TAMPA	FL	TPA	9,197,382	1.12	588,866,248	71.59	166,684	11,973,505
30	PORTLAND	OR	PDX	8,898,893	1.08	597,765,141	72.67	202,749	12,176,254
31	DALLAS	TX	DAL	7,542,119	0.92	605,307,260	73.59	163,516	12,339,770
32	ST LOUIS	MO	STL	6,617,903	0.80	611,925,163	74.39	179,110	12,518,880
33	HOUSTON	TX	HOU	6,259,497	0.76	618,184,660	75.16	143,520	12,662,400
34	NASHVILLE	TN	BNA	6,168,063	0.75	624,352,723	75.91	152,176	12,814,576
35	AUSTIN	TX	AUS	6,026,666	0.73	630,379,389	76.64	130,344	12,944,920
36	OAKLAND	CA	OAK	5,816,817	0.71	636,196,206	77.35	146,943	13,091,863
37	NEW ORLEANS	LA	MSY	5,492,703	0.67	641,688,909	78.01	119,354	13,211,217
38	KANSAS CITY	MO	MCI	5,330,923	0.65	647,019,832	78.66	117,353	13,328,570
39	RALEIGH/DURHAM	NC	RDU	5,324,576	0.65	652,344,408	79.31	139,881	13,468,451
40	SANTA ANA	CA	SNA	5,198,133	0.63	657,542,541	79.94	107,225	13,575,676

Table S-4 Ranking of Top 100 FAA Towers by Total Enplanements, FY 2016

Rank	City	State	Location Identifier	Enplaned Passengers*	Percent of Total**	Cumulative Enplanements	Cumulative Percentage	Commercial Operations***	Cumulative Operations
41	SAN JOSE	CA	SJC	5,146,163	0.63	662,688,704	80.57	122,358	13,698,034
42	SACRAMENTO	CA	SMF	4,897,925	0.60	667,586,629	81.16	100,561	13,798,595
43	SAN JUAN	PR	SJU	4,377,121	0.53	671,963,750	81.69	140,312	13,938,907
44	FORT MYERS	FL	RSW	4,251,536	0.52	676,215,286	82.21	70,812	14,009,719
45	INDIANAPOLIS	IN	IND	4,193,414	0.51	680,408,700	82.72	145,518	14,155,237
46	SAN ANTONIO	TX	SAT	4,162,863	0.51	684,571,563	83.23	109,932	14,265,169
47	CLEVELAND	OH	CLE	4,088,099	0.50	688,659,662	83.72	109,198	14,374,367
48	PITTSBURGH	PA	PIT	3,959,940	0.48	692,619,602	84.21	125,892	14,500,259
49	COLUMBUS	OH	CMH	3,522,423	0.43	696,142,025	84.63	108,415	14,608,674
50	KAHULUI	HI	OGG	3,307,854	0.40	699,449,879	85.04	117,323	14,725,997
51	MILWAUKEE	WI	MKE	3,298,421	0.40	702,748,300	85.44	99,020	14,825,017
52	COVINGTON	KY	CVG	3,217,929	0.39	705,966,229	85.83	129,941	14,954,958
53	WEST PALM BEACH	FL	PBI	3,134,429	0.38	709,100,658	86.21	83,350	15,038,308
54	WINDSOR LOCKS	CT	BDL	2,952,140	0.36	712,052,798	86.57	76,536	15,114,844
55	JACKSONVILLE	FL	JAX	2,722,195	0.33	714,774,993	86.90	72,658	15,187,502
56	ANCHORAGE	AK	ANC	2,555,041	0.31	717,330,034	87.21	190,131	15,377,633
57	ALBUQUERQUE	NM	ABQ	2,331,743	0.28	719,661,777	87.49	73,463	15,451,096
58	BUFFALO	NY	BUF	2,300,930	0.28	721,962,707	87.77	70,834	15,521,930
59	OMAHA	NE	OMA	2,095,710	0.25	724,058,417	88.03	67,265	15,589,195
60	ONTARIO	CA	ONT	2,084,823	0.25	726,143,240	88.28	73,148	15,662,343
61	BURBANK	CA	BUR	2,026,807	0.25	728,170,047	88.53	63,020	15,725,363
62	MEMPHIS	TN	MEM	1,996,012	0.24	730,166,059	88.77	200,926	15,926,289
63	CHARLESTON	SC	CHS	1,802,846	0.22	731,968,905	88.99	59,140	15,985,429
64	OKLAHOMA CITY	OK	OKC	1,799,464	0.22	733,768,369	89.21	57,308	16,042,737
65	PROVIDENCE	RI	PVD	1,793,553	0.22	735,561,922	89.43	42,821	16,085,558
66	RICHMOND	VA	RIC	1,763,247	0.21	737,325,169	89.64	62,150	16,147,708
67	RENO	NV	RNO	1,752,590	0.21	739,077,759	89.85	51,426	16,199,134
68	LOUISVILLE	KY	SDF	1,628,755	0.20	740,706,514	90.05	138,435	16,337,569
69	BOISE	ID	BOI	1,598,226	0.19	742,304,740	90.25	54,720	16,392,289
70	NORFOLK	VA	ORF	1,587,740	0.19	743,892,480	90.44	53,892	16,446,181
71	TUCSON	AZ	TUS	1,568,336	0.19	745,460,816	90.63	50,429	16,496,610
72	SPOKANE	WA	GEG	1,552,634	0.19	747,013,450	90.82	46,307	16,542,917
73	KAILUA/KONA	HI	KOA	1,533,736	0.19	748,547,186	91.00	46,683	16,589,600
74	GUAM	GU	GUM	1,441,769	0.18	749,988,955	91.18	28,203	16,617,803
75	LIHUE	HI	LIH	1,411,256	0.17	751,400,211	91.35	100,672	16,718,475
76	EL PASO	TX	ELP	1,395,734	0.17	752,795,945	91.52	49,168	16,767,643
77	ALBANY	NY	ALB	1,370,202	0.17	754,166,147	91.69	46,428	16,814,071
78	TULSA	OK	TUL	1,347,867	0.16	755,514,014	91.85	47,089	16,861,160
79	GRAND RAPIDS	MI	GRR	1,312,673	0.16	756,826,687	92.01	41,456	16,902,616
80	BIRMINGHAM	AL	BHM	1,308,888	0.16	758,135,575	92.17	49,684	16,952,300

Table S-4 Ranking of Top 100 FAA Towers by Total Enplanements, FY 2016

Rank	City	State	Location Identifier	Enplaned Passengers*	Percent of Total**	Cumulative Enplanements	Cumulative Percentage	Commercial Operations***	Cumulative Operations
81	ORLANDO	FL	SFB	1,296,262	0.16	759,431,837	92.33	107,255	17,059,555
82	LONG BEACH	CA	LGB	1,285,914	0.16	760,717,751	92.48	31,284	17,090,839
83	DES MOINES	IA	DSM	1,209,487	0.15	761,927,238	92.63	40,445	17,131,284
84	ROCHESTER	NY	ROC	1,191,350	0.14	763,118,588	92.78	44,347	17,175,631
85	SAVANNAH	GA	SAV	1,050,891	0.13	764,169,479	92.90	42,579	17,218,210
86	DAYTON	OH	DAY	1,018,123	0.12	765,187,602	93.03	39,688	17,257,898
87	MANCHESTER	NH	MHT	1,009,963	0.12	766,197,565	93.15	40,006	17,297,904
88	GREER	SC	GSP	985,596	0.12	767,183,161	93.27	34,229	17,332,133
89	SYRACUSE	NY	SYR	983,031	0.12	768,166,192	93.39	43,075	17,375,208
90	PALM SPRINGS	CA	PSP	968,453	0.12	769,134,645	93.51	30,072	17,405,280
91	LITTLE ROCK	AR	LIT	957,015	0.12	770,091,660	93.62	34,999	17,440,279
92	MYRTLE BEACH	SC	MYR	941,368	0.11	771,033,028	93.74	95,174	17,535,453
93	ST PETE-CLEARWATER	FL	PIE	895,059	0.11	771,928,087	93.85	16,982	17,552,435
94	MADISON	WI	MSN	882,228	0.11	772,810,315	93.95	29,616	17,582,051
95	PORTLAND	ME	PWM	870,065	0.11	773,680,380	94.06	31,761	17,613,812
96	KNOXVILLE	TN	TYS	869,370	0.11	774,549,750	94.17	41,129	17,654,941
97	GREENSBORO	NC	GSO	844,661	0.10	775,394,411	94.27	45,769	17,700,710
98	PENSACOLA	FL	PNS	788,517	0.10	776,182,928	94.36	25,622	17,726,332
99	WICHITA	KS	ICT	781,235	0.09	776,964,163	94.46	39,773	17,766,105
100	WHITE PLAINS	NY	HPN	765,167	0.09	777,729,330	94.55	69,914	17,836,019
Total of airports 101 thru 517				40,235,572	4.89	817,964,902	99.44	4,160,572	21,996,591

*Enplanements include air carrier, commuter and international.

**Percent is of national total enplanements.

***Operations include itinerant air carrier and air taxi only.

Table S-5 Summary of Enplanements and Airport Operations at FAA Towers and Contract Towers

Enplanements at Towered Airports

	Count	2016	2045	Annual Compound Growth Rate 2016-2045
Large Hubs	30	597,765,141	1,094,681,660	2.11
Medium Hubs	30	128,378,099	237,136,867	2.14
Small Hubs	70	68,078,923	125,029,219	2.12
Non Hubs	387	23,742,739	38,377,034	1.67
Total	517	817,964,902	1,495,224,780	2.10

Operations at Towered Airports

	Count	2016	2045	Annual Compound Growth Rate 2016-2045
Large Hubs	30	12,772,490	20,165,302	1.59
Medium Hubs	30	4,615,184	6,854,987	1.37
Small Hubs	70	6,633,565	8,544,221	0.88
Non Hubs	387	25,973,612	29,084,181	0.39
Total	517	49,994,851	64,648,691	0.89

Table S-6 Commercial Airport Operations Summary by Region*

Fiscal Year	Alaska (AAL)	Central (ACE)	Eastern (AEA)	Great Lakes (AGL)	New England (ANÉ)	Northwest Mountain (ANM)	Southern (ASO)	Southwest (ASW)	Western Pacific (AWP)	National Total
Historical										
2013	973,892	728,014	3,650,772	3,769,368	954,733	2,295,774	5,103,800	2,730,735	4,385,286	24,592,374
2014	975,078	722,148	3,584,168	3,672,932	939,378	2,296,273	5,040,093	2,723,520	4,462,686	24,416,276
2015	1,008,977	709,188	3,563,852	3,607,037	919,479	2,262,023	5,251,137	2,713,659	4,538,884	24,574,236
2016	973,226	719,657	3,612,550	3,620,520	931,912	2,324,368	5,338,119	2,661,833	4,645,971	24,828,156
Forecast										
2017	949,283	726,816	3,607,298	3,633,972	932,143	2,380,362	5,402,054	2,611,899	4,818,313	25,062,140
2018	924,050	741,154	3,685,798	3,703,507	977,832	2,415,113	5,497,209	2,667,799	4,947,234	25,559,696
2019	930,596	749,673	3,732,832	3,718,916	991,204	2,455,418	5,580,433	2,714,989	5,044,829	25,918,890
2020	936,964	756,827	3,763,830	3,721,348	1,002,651	2,489,787	5,651,768	2,753,523	5,134,431	26,211,129
2021	943,114	762,145	3,782,025	3,701,490	1,012,099	2,515,369	5,708,347	2,786,080	5,218,882	26,429,551
2022	949,227	767,094	3,797,611	3,676,748	1,021,435	2,539,680	5,763,441	2,817,907	5,303,439	26,636,582
2023	955,258	774,535	3,831,096	3,688,426	1,033,175	2,572,461	5,837,066	2,855,960	5,388,007	26,935,984
2024	961,413	784,431	3,877,391	3,733,737	1,047,226	2,613,548	5,928,290	2,900,275	5,475,204	27,321,515
2025	967,647	794,790	3,926,156	3,785,931	1,061,877	2,656,488	6,023,325	2,946,186	5,562,842	27,725,242
2026	974,053	805,407	3,975,812	3,839,755	1,076,880	2,700,576	6,120,492	2,992,971	5,652,817	28,138,763
2027	980,735	816,356	4,026,643	3,895,196	1,092,369	2,745,918	6,220,883	3,040,459	5,745,018	28,563,577
2028	987,666	827,650	4,078,208	3,952,394	1,108,390	2,792,746	6,323,295	3,089,490	5,840,846	29,000,685
2029	994,667	839,172	4,131,189	4,010,867	1,124,831	2,840,847	6,428,922	3,140,146	5,939,030	29,449,671
2030	1,001,704	850,736	4,184,079	4,069,545	1,141,347	2,889,251	6,534,359	3,190,971	6,037,919	29,899,911
2031	1,008,842	862,348	4,237,231	4,128,356	1,158,002	2,938,073	6,641,051	3,242,049	6,137,495	30,353,447
2032	1,016,000	873,823	4,290,184	4,186,936	1,174,568	2,986,865	6,748,155	3,292,945	6,236,970	30,806,446
2033	1,023,248	885,197	4,342,484	4,244,948	1,190,958	3,035,371	6,854,066	3,343,504	6,335,629	31,255,405
2034	1,030,699	896,916	4,396,198	4,304,801	1,207,886	3,085,596	6,962,378	3,395,795	6,437,650	31,717,919
2035	1,038,333	908,880	4,450,948	4,366,406	1,225,215	3,137,502	7,073,255	3,449,505	6,542,438	32,192,482
2036	1,046,098	920,977	4,506,344	4,428,846	1,242,751	3,190,071	7,185,932	3,503,809	6,649,004	32,673,832
2037	1,053,966	932,990	4,561,318	4,490,847	1,260,254	3,242,753	7,297,612	3,558,061	6,755,541	33,153,342
2038	1,061,946	945,140	4,617,005	4,553,712	1,278,025	3,295,971	7,411,080	3,612,595	6,863,170	33,638,644
2039	1,070,086	957,551	4,673,397	4,617,717	1,296,099	3,350,449	7,526,718	3,667,995	6,972,371	34,132,383
2040	1,078,292	970,112	4,730,244	4,682,741	1,314,422	3,406,260	7,643,547	3,724,389	7,083,644	34,633,651
2041	1,086,742	982,832	4,787,966	4,748,505	1,332,981	3,463,109	7,762,558	3,781,573	7,196,639	35,142,905
2042	1,095,275	995,548	4,845,326	4,814,195	1,351,525	3,520,167	7,881,413	3,839,111	7,309,174	35,651,734
2043	1,103,852	1,008,471	4,903,448	4,881,254	1,370,448	3,578,383	8,002,511	3,897,811	7,424,217	36,170,395
2044	1,112,565	1,021,627	4,962,532	4,949,502	1,389,638	3,637,686	8,125,681	3,957,471	7,541,556	36,698,258
2045	1,121,426	1,035,015	5,022,317	5,019,055	1,409,168	3,698,342	8,251,140	4,018,087	7,660,863	37,235,413

*Includes air carrier and commuter/air taxi operations at all airports.

Table S-7 Itinerant Airport Operations Summary by Region*

Fiscal Year	Alaska (AAL)	Central (ACE)	Eastern (AEA)	Great Lakes (AGL)	New England (ANE)	Northwest Mountain (ANM)	Southern (ASO)	Southwest (ASW)	Western Pacific (AWP)	National Total
Historical										
2013	1,505,447	2,618,381	6,878,525	8,820,532	2,209,568	6,315,070	14,504,839	7,770,102	10,465,233	61,087,697
2014	1,509,699	2,555,492	6,777,475	8,607,581	2,171,164	6,203,713	14,361,181	7,599,399	10,619,462	60,405,166
2015	1,497,293	2,544,248	6,727,982	8,537,348	2,101,617	6,194,695	14,654,179	7,534,732	10,678,912	60,471,006
2016	1,464,830	2,532,498	6,798,073	8,610,989	2,058,550	6,157,701	14,675,641	7,481,570	10,682,806	60,462,658
Forecast										
2017	1,439,442	2,531,807	6,776,927	8,619,253	2,037,411	6,251,013	14,800,903	7,449,042	10,804,408	60,710,206
2018	1,413,831	2,543,445	6,864,053	8,699,478	2,073,106	6,313,631	14,923,175	7,535,190	10,941,517	61,307,426
2019	1,420,956	2,552,977	6,921,805	8,727,374	2,087,295	6,385,878	15,026,303	7,598,603	11,049,951	61,771,142
2020	1,427,905	2,561,148	6,963,648	8,742,488	2,099,559	6,452,535	15,117,813	7,653,614	11,150,480	62,169,190
2021	1,434,639	2,567,491	6,992,788	8,734,975	2,109,827	6,510,752	15,194,840	7,702,934	11,245,938	62,494,184
2022	1,441,340	2,573,470	7,019,435	8,722,699	2,119,987	6,568,234	15,270,665	7,751,796	11,341,597	62,809,223
2023	1,447,961	2,581,944	7,064,118	8,747,003	2,132,554	6,634,749	15,365,306	7,807,109	11,437,352	63,218,096
2024	1,454,708	2,592,880	7,121,693	8,804,918	2,147,433	6,710,287	15,477,853	7,868,953	11,535,823	63,714,548
2025	1,461,537	2,604,283	7,181,883	8,869,908	2,162,913	6,788,282	15,594,497	7,932,718	11,634,826	64,230,847
2026	1,468,540	2,615,947	7,243,116	8,936,871	2,178,748	6,868,084	15,713,578	7,997,656	11,736,256	64,758,796
2027	1,475,823	2,627,947	7,305,660	9,005,630	2,195,071	6,949,841	15,836,177	8,063,592	11,839,998	65,299,739
2028	1,483,357	2,640,298	7,369,075	9,076,365	2,211,929	7,033,807	15,961,105	8,131,397	11,947,462	65,854,795
2029	1,490,963	2,652,883	7,434,062	9,148,533	2,229,208	7,119,755	16,089,574	8,201,126	12,057,375	66,423,479
2030	1,498,607	2,665,521	7,498,853	9,221,104	2,246,565	7,206,748	16,218,183	8,271,366	12,168,085	66,995,032
2031	1,506,358	2,678,215	7,564,062	9,293,984	2,264,063	7,294,925	16,348,376	8,342,181	12,279,581	67,571,745
2032	1,514,131	2,690,784	7,629,227	9,366,883	2,281,476	7,383,855	16,479,325	8,413,153	12,391,076	68,149,910
2033	1,521,997	2,703,262	7,693,914	9,439,452	2,298,714	7,473,303	16,609,423	8,484,131	12,501,855	68,726,051
2034	1,530,067	2,716,098	7,760,178	9,514,122	2,316,492	7,565,288	16,742,260	8,557,195	12,616,095	69,317,795
2035	1,538,323	2,729,193	7,827,651	9,590,798	2,334,677	7,659,815	16,878,009	8,632,035	12,733,209	69,923,710
2036	1,546,715	2,742,432	7,895,948	9,668,570	2,353,070	7,755,864	17,015,925	8,707,855	12,852,197	70,538,576
2037	1,555,212	2,755,601	7,964,002	9,746,157	2,371,434	7,852,891	17,153,202	8,784,005	12,971,267	71,153,771
2038	1,563,825	2,768,921	8,032,939	9,824,872	2,390,068	7,951,357	17,292,650	8,860,820	13,091,534	71,776,986
2039	1,572,600	2,782,514	8,102,759	9,904,996	2,409,008	8,052,021	17,434,663	8,938,893	13,213,486	72,410,940
2040	1,581,445	2,796,273	8,173,201	9,986,412	2,428,199	8,154,968	17,578,254	9,018,367	13,337,622	73,054,741
2041	1,590,536	2,810,203	8,244,704	10,068,848	2,447,628	8,259,321	17,724,426	9,099,046	13,463,592	73,708,304
2042	1,599,713	2,824,143	8,316,039	10,151,493	2,467,045	8,365,510	17,870,851	9,180,508	13,589,217	74,364,519
2043	1,608,937	2,838,300	8,388,344	10,235,800	2,486,844	8,473,886	18,019,933	9,263,562	13,717,460	75,033,066
2044	1,618,302	2,852,709	8,461,802	10,321,599	2,506,912	8,584,409	18,171,506	9,348,012	13,848,117	75,713,368
2045	1,627,816	2,867,362	8,536,168	10,409,010	2,527,322	8,697,372	18,325,793	9,433,889	13,980,866	76,405,598

*Includes itinerant air carrier, commuter/air taxi, general aviation and military operations at all airports.

TABLE S-8 Total Airport Operations Summary by Region*

Fiscal Year	Alaska (AAL)	Central (ACE)	Eastern (AEA)	Great Lakes (AGL)	New England (ANE)	Northwest Mountain (ANM)	Southern (ASO)	Southwest (ASW)	Western Pacific (AWP)	National Total
Historical										
2013	1,838,141	4,657,963	10,820,264	15,305,524	3,561,861	10,167,585	22,314,112	13,030,491	16,398,906	98,094,847
2014	1,841,688	4,557,087	10,661,123	14,927,525	3,475,019	10,066,039	22,157,820	12,912,991	16,677,501	97,276,793
2015	1,861,740	4,548,395	10,616,796	14,849,262	3,364,203	10,228,484	22,499,963	12,937,421	16,706,448	97,612,712
2016	1,837,237	4,492,300	10,650,458	14,868,182	3,290,231	10,074,401	22,446,844	13,096,798	16,625,738	97,382,189
Forecast										
2017	1,813,997	4,468,335	10,622,760	14,909,497	3,242,674	10,211,296	22,671,673	13,122,921	16,816,308	97,879,461
2018	1,794,087	4,482,466	10,732,521	15,020,100	3,277,680	10,342,659	22,838,442	13,259,566	17,022,478	98,769,999
2019	1,802,120	4,493,207	10,806,354	15,068,505	3,292,679	10,443,663	22,965,636	13,342,879	17,144,287	99,359,330
2020	1,809,977	4,502,593	10,864,783	15,104,858	3,305,759	10,539,669	23,081,563	13,418,107	17,258,280	99,885,589
2021	1,817,624	4,510,157	10,910,145	15,117,600	3,316,845	10,627,612	23,183,350	13,488,007	17,367,298	100,338,638
2022	1,825,238	4,517,369	10,953,506	15,125,731	3,327,830	10,715,274	23,284,291	13,557,803	17,476,611	100,783,653
2023	1,832,774	4,527,086	11,015,131	15,170,681	3,341,227	10,812,520	23,404,412	13,634,404	17,586,121	101,324,356
2024	1,840,436	4,539,272	11,089,863	15,249,075	3,356,938	10,919,296	23,542,813	13,717,913	17,698,447	101,954,053
2025	1,848,180	4,551,934	11,167,452	15,334,817	3,373,254	11,029,046	23,685,681	13,803,708	17,811,399	102,605,471
2026	1,856,175	4,564,868	11,246,352	15,422,901	3,389,929	11,141,190	23,831,373	13,891,061	17,926,885	103,270,734
2027	1,864,450	4,578,145	11,326,817	15,513,035	3,407,096	11,255,891	23,980,969	13,979,812	18,044,779	103,950,994
2028	1,872,976	4,591,785	11,408,402	15,605,535	3,424,802	11,373,439	24,133,306	14,070,834	18,166,501	104,647,580
2029	1,881,575	4,605,669	11,491,828	15,699,731	3,442,934	11,493,610	24,289,586	14,164,209	18,290,771	105,359,913
2030	1,890,212	4,619,615	11,575,054	15,794,599	3,461,148	11,615,507	24,446,427	14,258,547	18,415,938	106,077,047
2031	1,898,958	4,633,626	11,658,970	15,890,076	3,479,506	11,739,265	24,605,281	14,353,891	18,542,001	106,801,574
2032	1,907,726	4,647,523	11,743,131	15,985,921	3,497,783	11,864,474	24,765,323	14,449,819	18,668,172	107,529,872
2033	1,916,665	4,661,337	11,827,105	16,081,816	3,515,892	11,990,917	24,924,959	14,546,209	18,793,735	108,258,635
2034	1,925,808	4,675,525	11,912,944	16,180,282	3,534,546	12,120,630	25,087,780	14,645,158	18,922,872	109,005,545
2035	1,935,137	4,689,982	12,000,290	16,281,130	3,553,611	12,253,645	25,253,981	14,746,375	19,054,992	109,769,143
2036	1,944,607	4,704,592	12,088,766	16,383,468	3,572,888	12,388,960	25,422,822	14,849,054	19,189,094	110,544,251
2037	1,954,182	4,719,145	12,177,307	16,485,984	3,592,141	12,526,053	25,591,504	14,952,559	19,323,391	111,322,266
2038	1,963,874	4,733,861	12,267,055	16,590,020	3,611,668	12,665,410	25,762,849	15,057,253	19,458,998	112,110,988
2039	1,973,728	4,748,863	12,358,013	16,695,871	3,631,505	12,807,796	25,937,251	15,163,712	19,596,408	112,913,147
2040	1,983,727	4,764,040	12,449,926	16,803,421	3,651,598	12,953,348	26,113,733	15,272,104	19,736,119	113,728,016
2041	1,993,988	4,779,401	12,543,238	16,912,401	3,671,935	13,100,714	26,293,318	15,382,248	19,877,781	114,555,024
2042	2,004,349	4,794,785	12,636,737	17,022,007	3,692,263	13,251,362	26,473,688	15,493,728	20,019,215	115,388,134
2043	2,014,771	4,810,396	12,731,569	17,133,717	3,712,980	13,405,165	26,657,255	15,607,378	20,163,391	116,236,622
2044	2,025,348	4,826,267	12,827,925	17,247,356	3,733,970	13,562,106	26,843,862	15,723,005	20,310,105	117,099,944
2045	2,036,089	4,842,399	12,925,560	17,363,055	3,755,306	13,722,508	27,033,743	15,840,657	20,459,040	117,978,357

*Includes all itinerant and local operations at all airports.

TABLE S-9 TRACON Operations Summary by Region*

Fiscal Year	Alaska (AAL)	Central (ACE)	Eastern (AEA)	Great Lakes (AGL)	New England (ANE)	Northwest Mountain (ANM)	Southern (ASO)	Southwest (ASW)	Western Pacific (AWP)	National Total
Historical										
2013	358,581	1,239,629	5,676,943	5,215,434	1,363,177	2,775,624	9,179,526	5,160,831	6,014,158	36,983,903
2014	359,662	1,223,564	5,629,251	5,072,721	1,356,804	2,834,102	9,005,002	5,132,931	6,208,864	36,822,901
2015	370,069	1,220,302	5,657,365	5,022,396	1,341,910	2,860,833	9,230,649	5,150,627	6,338,774	37,192,925
2016	365,668	1,239,021	5,727,081	5,106,956	1,387,818	2,928,600	9,419,543	5,140,572	6,397,624	37,712,883
Forecast										
2017	358,680	1,258,237	5,614,327	5,150,934	1,381,447	3,012,336	9,675,985	5,142,501	6,491,009	38,085,456
2018	350,892	1,266,554	5,710,153	5,227,629	1,424,208	3,058,026	9,801,600	5,212,446	6,597,272	38,648,780
2019	354,996	1,274,743	5,758,065	5,241,551	1,436,907	3,094,051	9,892,983	5,266,838	6,697,200	39,017,334
2020	358,909	1,280,911	5,786,814	5,239,112	1,446,912	3,122,884	9,968,283	5,311,295	6,787,328	39,302,448
2021	362,583	1,284,037	5,797,745	5,208,712	1,453,534	3,142,433	10,021,325	5,348,009	6,869,433	39,487,811
2022	366,185	1,286,455	5,804,989	5,171,904	1,459,678	3,160,311	10,071,201	5,383,499	6,950,964	39,655,186
2023	369,727	1,293,394	5,839,345	5,180,812	1,470,635	3,190,092	10,151,936	5,427,715	7,037,052	39,960,708
2024	373,357	1,304,633	5,894,970	5,231,955	1,486,185	3,230,944	10,261,474	5,480,566	7,129,796	40,393,880
2025	377,044	1,316,691	5,954,703	5,291,712	1,502,840	3,274,050	10,377,052	5,535,511	7,223,751	40,853,354
2026	380,877	1,329,044	6,015,616	5,353,252	1,519,892	3,318,310	10,495,037	5,591,466	7,320,164	41,323,658
2027	384,937	1,341,765	6,078,015	5,416,631	1,537,482	3,363,839	10,616,769	5,648,285	7,419,009	41,806,732
2028	389,202	1,354,873	6,141,453	5,481,988	1,555,665	3,410,845	10,741,047	5,706,820	7,521,605	42,303,498
2029	393,508	1,368,258	6,206,614	5,548,884	1,574,325	3,459,116	10,869,284	5,767,144	7,626,743	42,813,876
2030	397,826	1,381,682	6,271,754	5,615,952	1,593,061	3,507,665	10,997,322	5,827,645	7,732,570	43,325,477
2031	402,212	1,395,162	6,337,250	5,683,183	1,611,949	3,556,586	11,126,765	5,888,439	7,839,074	43,840,620
2032	406,587	1,408,494	6,402,567	5,750,094	1,630,741	3,605,435	11,256,599	5,949,051	7,945,567	44,355,135
2033	411,016	1,421,702	6,467,147	5,816,283	1,649,328	3,653,949	11,385,065	6,009,279	8,051,167	44,864,936
2034	415,607	1,435,305	6,533,459	5,884,596	1,668,511	3,704,183	11,516,410	6,071,421	8,160,267	45,389,759
2035	420,339	1,449,198	6,601,053	5,954,891	1,688,148	3,756,088	11,650,772	6,135,153	8,272,349	45,927,991
2036	425,160	1,463,243	6,669,458	6,026,118	1,708,024	3,808,630	11,787,199	6,199,574	8,386,238	46,473,644
2037	430,052	1,477,188	6,737,417	6,096,805	1,727,847	3,861,220	11,922,542	6,263,926	8,500,011	47,017,008
2038	435,018	1,491,292	6,806,223	6,168,415	1,747,964	3,914,319	12,059,905	6,328,639	8,614,974	47,566,749
2039	440,102	1,505,684	6,875,925	6,241,308	1,768,422	3,968,666	12,199,729	6,394,332	8,731,612	48,125,780
2040	445,222	1,520,249	6,946,238	6,315,322	1,789,158	4,024,309	12,341,008	6,461,131	8,850,440	48,693,077
2041	450,530	1,535,001	7,017,598	6,390,220	1,810,162	4,080,973	12,484,767	6,528,831	8,971,074	49,269,156
2042	455,882	1,549,747	7,088,604	6,464,963	1,831,148	4,137,760	12,628,343	6,596,864	9,091,257	49,844,568
2043	461,252	1,564,737	7,160,590	6,541,243	1,852,551	4,195,677	12,774,488	6,666,191	9,214,041	50,430,770
2044	466,710	1,579,991	7,233,728	6,618,853	1,874,260	4,254,660	12,923,009	6,736,607	9,339,262	51,027,080
2045	472,270	1,595,503	7,307,763	6,697,916	1,896,349	4,314,965	13,074,138	6,808,092	9,466,547	51,633,543

TABLE S-10 Enplanements Summary by Region*

Fiscal Year	Alaska (AAL)	Central (ACE)	Eastern (AEA)	Great Lakes (AGL)	New England (ANE)	Northwest Mountain (ANM)	Southern (ASO)	Southwest (ASW)	Western Pacific (AWP)	National Total
Historical										
2013	4,389,781	16,332,429	120,114,631	98,066,458	22,393,108	68,258,672	170,889,088	83,571,431	150,320,923	734,336,521
2014	4,461,781	16,562,601	121,874,137	100,740,204	23,253,706	70,663,874	173,781,263	87,326,650	154,865,661	753,529,877
2015	4,740,012	16,798,303	126,371,819	104,550,315	23,938,226	73,860,171	181,837,100	92,166,318	162,122,322	786,384,586
2016	4,823,423	17,618,597	131,354,976	108,775,350	25,287,601	79,418,652	190,435,679	94,205,484	170,619,664	822,539,426
Forecast										
2017	4,802,474	18,646,917	134,109,110	110,980,462	26,662,805	83,867,444	196,510,874	95,506,956	178,691,660	849,778,702
2018	5,131,386	19,446,263	139,343,384	114,660,456	29,373,135	87,742,702	204,335,681	101,512,734	188,746,093	890,291,834
2019	5,241,554	19,898,266	143,042,726	117,372,305	30,156,193	90,214,302	209,749,524	104,268,902	193,784,826	913,728,598
2020	5,346,011	20,315,489	146,926,528	119,829,588	30,866,205	92,455,565	214,698,223	106,655,492	198,551,983	935,645,084
2021	5,442,944	20,711,849	150,743,645	122,122,722	31,533,539	94,559,117	219,389,426	108,908,884	203,134,590	956,546,716
2022	5,537,992	21,110,296	154,557,089	124,437,715	32,210,608	96,668,609	224,131,216	111,173,993	207,730,440	977,557,958
2023	5,630,290	21,504,862	158,031,617	126,715,668	32,888,505	98,734,877	228,842,647	113,412,587	212,214,478	997,975,531
2024	5,724,755	21,904,453	160,935,615	128,995,832	33,569,191	100,794,323	233,562,662	115,652,401	216,730,869	1,017,870,101
2025	5,820,094	22,303,956	163,790,697	131,280,566	34,253,591	102,862,526	238,282,122	117,906,425	221,239,247	1,037,739,224
2026	5,916,471	22,714,797	166,662,142	133,634,251	34,954,797	104,986,099	243,116,399	120,205,624	225,874,131	1,058,064,711
2027	6,017,299	23,141,295	169,569,359	136,066,705	35,679,539	107,177,272	248,117,132	122,545,124	230,631,432	1,078,945,157
2028	6,123,315	23,583,012	172,497,404	138,585,828	36,430,843	109,448,007	253,200,544	124,969,605	235,586,718	1,100,425,276
2029	6,230,358	24,034,312	175,485,919	141,164,075	37,202,083	111,783,723	258,421,829	127,476,210	240,671,811	1,122,470,320
2030	6,337,114	24,486,883	178,459,091	143,747,595	37,976,615	114,130,692	263,613,825	129,988,905	245,791,421	1,144,532,141
2031	6,445,874	24,940,465	181,439,141	146,336,092	38,758,124	116,496,213	268,873,096	132,515,099	250,952,258	1,166,756,362
2032	6,553,963	25,387,714	184,406,633	148,912,233	39,535,298	118,853,625	274,158,797	135,033,194	256,106,150	1,188,947,607
2033	6,662,940	25,829,452	187,339,083	151,454,880	40,302,703	121,187,955	279,372,314	137,532,481	261,207,895	1,210,889,703
2034	6,775,914	26,285,850	190,338,882	154,085,691	41,094,897	123,611,696	284,702,068	140,118,921	266,493,702	1,233,507,621
2035	6,892,699	26,752,534	193,384,725	156,799,726	41,906,331	126,120,592	290,154,941	142,776,003	271,928,255	1,256,715,806
2036	7,011,436	27,224,772	196,459,901	159,551,857	42,727,240	128,662,599	295,700,580	145,461,117	277,457,643	1,280,257,145
2037	7,130,789	27,691,892	199,514,378	162,278,704	43,547,003	131,204,639	301,180,168	148,140,741	282,975,520	1,303,663,834
2038	7,252,345	28,164,401	202,602,757	165,045,990	44,378,051	133,768,701	306,754,681	150,833,746	288,546,160	1,327,346,832
2039	7,377,468	28,648,127	205,723,404	167,865,902	45,223,502	136,395,714	312,440,494	153,569,123	294,196,851	1,351,440,585
2040	7,503,522	29,137,977	208,862,319	170,729,541	46,080,195	139,086,461	318,172,429	156,352,737	299,954,384	1,375,879,565
2041	7,635,679	29,634,147	212,041,602	173,626,606	46,947,953	141,830,623	324,022,150	159,176,384	305,800,388	1,400,715,532
2042	7,768,962	30,129,320	215,200,633	176,515,374	47,814,388	144,575,642	329,857,799	162,014,395	311,607,236	1,425,483,749
2043	7,902,670	30,633,336	218,396,215	179,467,950	48,698,779	147,377,722	335,805,318	164,909,387	317,547,636	1,450,739,013
2044	8,039,301	31,147,595	221,637,152	182,474,592	49,595,477	150,235,145	341,856,295	167,850,294	323,609,103	1,476,444,954
2045	8,179,051	31,671,779	224,907,424	185,543,796	50,508,193	153,158,686	348,025,020	170,835,947	329,770,470	1,502,600,366

*Includes both tower and non-tower airports.

TABLE S-11 Based Aircraft Summary by Region*

Fiscal Year	Alaska (AAL)	Central (ACE)	Eastern (AEA)	Great Lakes (AGL)	New England (ANÉ)	Northwest Mountain (ANM)	Southern (ASO)	Southwest (ASW)	Western Pacific (AWP)	National Total
Historical										
2013	4,698	9,714	15,698	27,262	5,985	22,507	31,136	21,527	28,389	166,916
2014	4,728	9,927	15,841	27,572	6,291	22,814	32,163	22,520	28,482	170,338
2015	4,656	9,569	14,929	27,027	5,729	22,258	30,798	21,658	27,349	163,973
2016	4,693	10,058	15,524	28,392	5,956	23,628	32,929	23,734	28,851	173,765
Forecast										
2017	4,705	10,097	15,655	28,538	6,012	24,056	33,184	23,965	29,113	175,325
2018	4,720	10,151	15,800	28,733	6,064	24,309	33,441	24,180	29,368	176,766
2019	4,735	10,194	15,925	28,914	6,117	24,523	33,694	24,400	29,633	178,135
2020	4,747	10,229	16,041	29,106	6,176	24,750	33,940	24,608	29,890	179,487
2021	4,763	10,279	16,188	29,292	6,235	25,012	34,225	24,851	30,152	180,997
2022	4,777	10,327	16,319	29,486	6,285	25,248	34,502	25,082	30,433	182,459
2023	4,792	10,394	16,460	29,676	6,353	25,513	34,798	25,319	30,726	184,031
2024	4,809	10,445	16,579	29,852	6,413	25,740	35,068	25,546	31,003	185,455
2025	4,822	10,496	16,694	30,035	6,470	25,970	35,327	25,767	31,278	186,859
2026	4,836	10,545	16,811	30,209	6,528	26,193	35,589	25,992	31,555	188,258
2027	4,850	10,595	16,937	30,391	6,587	26,418	35,857	26,217	31,834	189,686
2028	4,864	10,648	17,059	30,567	6,645	26,646	36,122	26,442	32,116	191,109
2029	4,878	10,699	17,176	30,751	6,704	26,873	36,394	26,672	32,401	192,548
2030	4,892	10,752	17,303	30,933	6,763	27,101	36,673	26,916	32,688	194,021
2031	4,906	10,803	17,431	31,118	6,821	27,331	36,945	27,155	32,974	195,484
2032	4,920	10,854	17,556	31,299	6,881	27,561	37,218	27,394	33,262	196,945
2033	4,934	10,908	17,680	31,483	6,941	27,794	37,499	27,632	33,556	198,427
2034	4,948	10,959	17,802	31,670	7,003	28,030	37,781	27,879	33,856	199,928
2035	4,962	11,013	17,933	31,851	7,064	28,272	38,069	28,134	34,161	201,459
2036	4,976	11,065	18,058	32,035	7,126	28,516	38,355	28,393	34,472	202,996
2037	4,990	11,118	18,192	32,219	7,190	28,761	38,653	28,657	34,786	204,566
2038	5,004	11,174	18,323	32,408	7,257	29,009	38,953	28,921	35,103	206,152
2039	5,018	11,231	18,455	32,597	7,325	29,259	39,253	29,192	35,425	207,755
2040	5,032	11,289	18,589	32,785	7,395	29,515	39,566	29,466	35,749	209,386
2041	5,046	11,346	18,724	32,969	7,465	29,759	39,874	29,737	36,075	210,995
2042	5,060	11,405	18,860	33,155	7,537	30,019	40,192	30,012	36,403	212,643
2043	5,074	11,464	18,998	33,341	7,609	30,284	40,507	30,293	36,735	214,305
2044	5,088	11,524	19,135	33,528	7,684	30,560	40,839	30,585	37,074	216,017
2045	5,103	11,585	19,276	33,718	7,760	30,837	41,175	30,881	37,419	217,754

*Includes both tower and non-tower airports.

Appendix A: Description of Activity Measures

Air Carrier Enplanements

These data summarize domestic enplaned passengers (originations and connections) of U.S. commercial air carriers and international enplanements for both U.S. and foreign flag carriers submitted to the U.S. Department of Transportation (DOT), Bureau of Transportation Statistics (BTS) on T-100 reports. Estimates include both scheduled and non-scheduled enplaned passengers.

Regional Enplanements

Starting in FY 2003, FAA includes in the regional category enplanements for those airlines whose primary function is to provide passenger feed to mainline carriers, regardless of aircraft size. As of October 2002, all scheduled and non-scheduled operations using aircraft with 10 or more seats to transport regional passengers must report on T-100.

Historic enplanement data includes originating passengers on scheduled commuter or regional carriers as reported on DOT Form 41 and 298-C; where possible, adjustments were made to include connecting passengers. Historically, Form 298-C included carriers operating at least five scheduled round trips per week whose entire fleet consists of aircraft having 60 seats or less.

Aircraft Operations

FAA air traffic controllers count landings and takeoffs at FAA towered airports. Controllers employed by an FAA contractor count operations at FAA contract towers. At non-FAA facilities, operations counts represent an estimate.

Air carrier operations represent either takeoffs or landings of commercial aircraft with seating capacity of more than 60 seats.

Commuter/air taxi operations are one category. Commuter operations include takeoffs and landings by aircraft with 60 or fewer seats that transport regional passengers on scheduled commercial flights. Air taxi operations include takeoffs and landings by aircraft with 60 or fewer seats conducted on non-scheduled or for-hire flights.

Itinerant general aviation and local civil operations represent all civil aviation aircraft takeoffs and landings not classified as commercial. Military operations represent takeoffs and landings by military aircraft. Operations are either itinerant or local flights.

Local Operations

Aircraft operating in the traffic pattern or within sight of the tower, or aircraft known to be departing or arriving from flight in local practice areas, or aircraft executing practice instrument approaches at the airport.

Itinerant Operations

FAA reports all aircraft operations other than local operations as itinerant. Essentially, these data represent takeoffs and landings of aircraft going from one airport to another.

Tracon Operations

These data include arrivals, departures, and overflights conducted by an FAA radar approach control facility for aircraft under Instrument Flight Rule (IFR) or Visual Flight Rule (VFR) plans.

Overflights

These data include operations of aircraft in transit through the approach control facility airspace.

Appendix B: List of FAA Towers by Hub Size and FAA Contract Towers

Table B-1 List of Large Hub Towers

Location Identifier	Region	Airport Name	City, State
ATL	ASO	HARTSFIELD - JACKSON ATLANTA INTL	ATLANTA, GA
BOS	ANE	GENERAL EDWARD LAWRENCE LOGAN INTL	BOSTON, MA
BWI	AEA	BALTIMORE/WASHINGTON INTL THURGOOD MARSHALL	BALTIMORE, MD
CLT	ASO	CHARLOTTE/DOUGLAS INTL	CHARLOTTE, NC
DCA	AEA	RONALD REAGAN WASHINGTON NATIONAL	WASHINGTON, DC
DEN	ANM	DENVER INTL	DENVER, CO
DFW	ASW	DALLAS-FORT WORTH INTL	DALLAS-FORT WORTH, TX
DTW	AGL	DETROIT METROPOLITAN WAYNE COUNTY	DETROIT, MI
EWR	AEA	NEWARK LIBERTY INTL	NEWARK, NJ
FLL	ASO	FORT LAUDERDALE/HOLLYWOOD INTL	FORT LAUDERDALE, FL
HNL	AWP	HONOLULU INTL	HONOLULU, HI
IAD	AEA	WASHINGTON DULLES INTL	WASHINGTON, DC
IAH	ASW	GEORGE BUSH INTERCONTINENTAL/HOUSTON	HOUSTON, TX
JFK	AEA	JOHN F KENNEDY INTL	NEW YORK, NY
LAS	AWP	MC CARRAN INTL	LAS VEGAS, NV
LAX	AWP	LOS ANGELES INTL	LOS ANGELES, CA
LGA	AEA	LAGUARDIA	NEW YORK, NY
MCO	ASO	ORLANDO INTL	ORLANDO, FL
MDW	AGL	CHICAGO MIDWAY INTL	CHICAGO, IL
MIA	ASO	MIAMI INTL	MIAMI, FL
MSP	AGL	MINNEAPOLIS-ST PAUL INTL/WOLD-CHAMBERLAIN	MINNEAPOLIS, MN
ORD	AGL	CHICAGO O'HARE INTL	CHICAGO, IL
PDX	ANM	PORTLAND INTL	PORTLAND, OR
PHL	AEA	PHILADELPHIA INTL	PHILADELPHIA, PA
PHX	AWP	PHOENIX SKY HARBOR INTL	PHOENIX, AZ
SAN	AWP	SAN DIEGO INTL	SAN DIEGO, CA
SEA	ANM	SEATTLE-TACOMA INTL	SEATTLE, WA
SFO	AWP	SAN FRANCISCO INTL	SAN FRANCISCO, CA
SLC	ANM	SALT LAKE CITY INTL	SALT LAKE CITY, UT
TPA	ASO	TAMPA INTL	TAMPA, FL

Listed 30 Airports

Table B-2 List of Medium Hub Towers

Location Identifier	Region	Airport Name	City, State
ABQ	ASW	ALBUQUERQUE INTL SUNPORT	ALBUQUERQUE, NM
ANC	AAL	TED STEVENS ANCHORAGE INTL	ANCHORAGE, AK
AUS	ASW	AUSTIN-BERGSTROM INTL	AUSTIN, TX
BDL	ANE	BRADLEY INTL	WINDSOR LOCKS, CT
BNA	ASO	NASHVILLE INTL	NASHVILLE, TN
BUF	AEA	BUFFALO NIAGARA INTL	BUFFALO, NY
CLE	AGL	CLEVELAND-HOPKINS INTL	CLEVELAND, OH
CMH	AGL	PORT COLUMBUS INTL	COLUMBUS, OH
CVG	ASO	CINCINNATI/NORTHERN KENTUCKY INTL	COVINGTON, KY
DAL	ASW	DALLAS LOVE FIELD	DALLAS, TX
HOU	ASW	WILLIAM P HOBBY	HOUSTON, TX
IND	AGL	INDIANAPOLIS INTL	INDIANAPOLIS, IN
JAX	ASO	JACKSONVILLE INTL	JACKSONVILLE, FL
MCI	ACE	KANSAS CITY INTL	KANSAS CITY, MO
MKE	AGL	GENERAL MITCHELL INTL	MILWAUKEE, WI
MSY	ASW	LOUIS ARMSTRONG NEW ORLEANS INTL	NEW ORLEANS, LA
OAK	AWP	METROPOLITAN OAKLAND INTL	OAKLAND, CA
OGG	AWP	KAHULUI	KAHULUI, HI
OMA	ACE	EPPLEY AIRFIELD	OMAHA, NE
ONT	AWP	ONTARIO INTL	ONTARIO, CA
PBI	ASO	PALM BEACH INTL	WEST PALM BEACH, FL
PIT	AEA	PITTSBURGH INTL	PITTSBURGH, PA
RDU	ASO	RALEIGH-DURHAM INTL	RALEIGH/DURHAM, NC
RSW	ASO	SOUTHWEST FLORIDA INTL	FORT MYERS, FL
SAT	ASW	SAN ANTONIO INTL	SAN ANTONIO, TX
SJC	AWP	NORMAN Y MINETA SAN JOSE INTL	SAN JOSE, CA
SJU	ASO	LUIS MUNOZ MARIN INTL	SAN JUAN, PR
SMF	AWP	SACRAMENTO INTL	SACRAMENTO, CA
SNA	AWP	JOHN WAYNE AIRPORT-ORANGE COUNTY	SANTA ANA, CA
STL	ACE	LAMBERT ST LOUIS INTL	ST LOUIS, MO

Listed 30 Airports

Table B-3 List of Small Hub Towers

Location Identifier	Region	Airport Name	City, State
ACY	AEA	ATLANTIC CITY INTL	ATLANTIC CITY, NJ
ALB	AEA	ALBANY INTL	ALBANY, NY
BHM	ASO	BIRMINGHAM-SHUTTLESWORTH INTL	BIRMINGHAM, AL
BIL	ANM	BILLINGS LOGAN INTL	BILLINGS, MT
BLI	ANM	BELLINGHAM INTL	BELLINGHAM, WA
BOI	ANM	BOISE AIR TERMINAL/GOWEN FLD	BOISE, ID
BTV	ANE	BURLINGTON INTL	BURLINGTON, VT
BUR	AWP	BOB HOPE	BURBANK, CA
BZN	ANM	BOZEMAN YELLOWSTONE INTL	BOZEMAN, MT
CAE	ASO	COLUMBIA METROPOLITAN	COLUMBIA, SC
CAK	AGL	AKRON-CANTON RGNL	AKRON, OH
CHS	ASO	CHARLESTON AFB/INTL	CHARLESTON, SC
CID	ACE	THE EASTERN IOWA	CEDAR RAPIDS, IA
COS	ANM	CITY OF COLORADO SPRINGS MUNI	COLORADO SPRINGS, CO
DAY	AGL	JAMES M COX DAYTON INTL	DAYTON, OH
DSM	ACE	DES MOINES INTL	DES MOINES, IA
ECP	ASO	NORTHWEST FLORIDA BEACHES INTL	PANAMA CITY, FL
ELP	ASW	EL PASO INTL	EL PASO, TX
EUG	ANM	MAHLON SWEET FIELD	EUGENE, OR
FAI	AAL	FAIRBANKS INTL	FAIRBANKS, AK
FAT	AWP	FRESNO YOSEMITE INTL	FRESNO, CA
FSD	AGL	JOE FOSS FIELD	SIOUX FALLS, SD
GEG	ANM	SPOKANE INTL	SPOKANE, WA
GRR	AGL	GERALD R FORD INTL	GRAND RAPIDS, MI
GSN	AWP	FRANCISCO C ADA/SAIPAN INTL	SAIPAN ISLAND, CQ
GSO	ASO	PIEDMONT TRIAD INTL	GREENSBORO, NC
GSP	ASO	GREENVILLE SPARTANBURG INTL	GREER, SC
GUM	AWP	GUAM INTL	GUAM, GU
HPN	AEA	WESTCHESTER COUNTY	WHITE PLAINS, NY
HSV	ASO	HUNTSVILLE INTL-CARL T JONES FIELD	HUNTSVILLE, AL
ICT	ACE	WICHITA DWIGHT D EISENHOWER NATIONAL	WICHITA, KS
ILM	ASO	WILMINGTON INTL	WILMINGTON, NC
ISP	AEA	LONG ISLAND MAC ARTHUR	NEW YORK, NY
ITO	AWP	HILO INTL	HILO, HI
IWA	AWP	PHOENIX-MESA GATEWAY	PHOENIX, AZ
JAN	ASO	JACKSON-MEDGAR WILEY EVERS INTL	JACKSON, MS
KOA	AWP	KONA INTL AT KEAHOLE	KAILUA/KONA, HI
LBB	ASW	LUBBOCK PRESTON SMITH INTL	LUBBOCK, TX
LEX	ASO	BLUE GRASS	LEXINGTON, KY
LGB	AWP	LONG BEACH /DAUGHERTY FIELD/	LONG BEACH, CA
LIH	AWP	LIHUE	LIHUE, HI
LIT	ASW	BILL AND HILLARY CLINTON NATIONAL/ADAMS FIELD	LITTLE ROCK, AR
MAF	ASW	MIDLAND INTL AIR AND SPACE PORT	MIDLAND, TX
MDT	AEA	HARRISBURG INTL	HARRISBURG, PA
MEM	ASO	MEMPHIS INTL	MEMPHIS, TN
MHT	ANE	MANCHESTER	MANCHESTER, NH
MSN	AGL	DANE COUNTY RGNL-TRUAX FIELD	MADISON, WI
MYR	ASO	MYRTLE BEACH INTL	MYRTLE BEACH, SC
OKC	ASW	WILL ROGERS WORLD	OKLAHOMA CITY, OK
ORF	AEA	NORFOLK INTL	NORFOLK, VA
PGD	ASO	PUNTA GORDA	PUNTA GORDA, FL
PIE	ASO	ST PETE-CLEARWATER INTL	ST PETE-CLEARWATER, FL
PNS	ASO	PENSACOLA INTL	PENSACOLA, FL
PSP	AWP	PALM SPRINGS INTL	PALM SPRINGS, CA
PVD	ANE	THEODORE FRANCIS GREEN STATE	PROVIDENCE, RI
PWM	ANE	PORTLAND INTL JETPORT	PORTLAND, ME
RIC	AEA	RICHMOND INTL	RICHMOND, VA
RNO	AWP	RENO/TAHOE INTL	RENO, NV
ROC	AEA	GREATER ROCHESTER INTL	ROCHESTER, NY
SAV	ASO	SAVANNAH/HILTON HEAD INTL	SAVANNAH, GA

Table B-3 List of Small Hub Towers

Location Identifier	Region	Airport Name	City, State
SDF	ASO	LOUISVILLE INTL-STANDIFORD FIELD	LOUISVILLE, KY
SFB	ASO	ORLANDO SANFORD INTL	ORLANDO, FL
SGF	ACE	SPRINGFIELD-BRANSON NATIONAL	SPRINGFIELD, MO
SRQ	ASO	SARASOTA/BRADENTON INTL	SARASOTA/BRADENTON, FL
STT	ASO	CYRIL E KING	CHARLOTTE AMALIE, VI
SYR	AEA	SYRACUSE HANCOCK INTL	SYRACUSE, NY
TUL	ASW	TULSA INTL	TULSA, OK
TUS	AWP	TUCSON INTL	TUCSON, AZ
TYS	ASO	MC GHEE TYSON	KNOXVILLE, TN
XNA	ASW	NORTHWEST ARKANSAS RGNL	FAYETTEVILLE/SPRINGDALE/, AR

Listed 70 Airports

Table B-4 List of Non-Hub Towers

Location Identifier	Region	Airport Name	City, State
ABE	AEA	LEHIGH VALLEY INTL	ALLENTOWN, PA
ABI	ASW	ABILENE RGNL	ABILENE, TX
ABY	ASO	SOUTHWEST GEORGIA RGNL	ALBANY, GA
ACK	ANE	NANTUCKET MEMORIAL	NANTUCKET, MA
ACT	ASW	WACO RGNL	WACO, TX
ADM	ASW	ARDMORE MUNI	ARDMORE, OK
ADQ	AAL	KODIAK	KODIAK, AK
ADS	ASW	ADDISON	DALLAS, TX
ADW	AEA	JOINT BASE ANDREWS	CAMP SPRINGS, MD
AEG	ASW	DOUBLE EAGLE II	ALBUQUERQUE, NM
AEX	ASW	ALEXANDRIA INTL	ALEXANDRIA, LA
AFW	ASW	FORT WORTH ALLIANCE	FORT WORTH, TX
AGC	AEA	ALLEGHENY COUNTY	PITTSBURGH, PA
AGS	ASO	AUGUSTA RGNL AT BUSH FIELD	AUGUSTA, GA
AHN	ASO	ATHENS/BEN EPPS	ATHENS, GA
AKN	AAL	KING SALMON	KING SALMON, AK
ALN	AGL	ST LOUIS RGNL	ALTON/ST LOUIS, IL
ALO	ACE	WATERLOO RGNL	WATERLOO, IA
ALW	ANM	WALLA WALLA RGNL	WALLA WALLA, WA
AMA	ASW	RICK HUSBAND AMARILLO INTL	AMARILLO, TX
ANE	AGL	ANOKA COUNTY-BLAINE ARPT (JANES FIELD)	MINNEAPOLIS, MN
APA	ANM	CENTENNIAL	DENVER, CO
APC	AWP	NAPA COUNTY	NAPA, CA
APF	ASO	NAPLES MUNI	NAPLES, FL
ARA	ASW	ACADIANA RGNL	NEW IBERIA, LA
ARB	AGL	ANN ARBOR MUNI	ANN ARBOR, MI
ARR	AGL	AURORA MUNI	CHICAGO/AURORA, IL
ASE	ANM	ASPEN-PITKIN CO/SARDY FIELD	ASPEN, CO
ASG	ASW	SPRINGDALE MUNI	SPRINGDALE, AR
ASH	ANE	BOIRE FIELD	NASHUA, NH
ATW	AGL	APPLETON INTL	APPLETON, WI
AVL	ASO	ASHEVILLE RGNL	ASHEVILLE, NC
AVP	AEA	WILKES-BARRE/SCRANTON INTL	WILKES-BARRE/SCRANTON, PA
AZO	AGL	KALAMAZOO/BATTLE CREEK INTL	KALAMAZOO, MI
BAF	ANE	WESTFIELD-BARNES RGNL	WESTFIELD/SPRINGFIELD, MA
BAK	AGL	COLUMBUS MUNI	COLUMBUS, IN
BAZ	ASW	NEW BRAUNFELS RGNL	NEW BRAUNFELS, TX
BBG	ACE	BRANSON	BRANSON, MO
BCT	ASO	BOCA RATON	BOCA RATON, FL
BDR	ANE	IGOR I SIKORSKY MEMORIAL	BRIDGEPORT, CT
BED	ANE	LAURENCE G HANSCOM FLD	BEDFORD, MA
BET	AAL	BETHEL	BETHEL, AK
BFI	ANM	BOEING FIELD/KING COUNTY INTL	SEATTLE, WA
BFL	AWP	MEADOWS FIELD	BAKERSFIELD, CA
BFM	ASO	MOBILE DOWNTOWN	MOBILE, AL
BGM	AEA	GREATER BINGHAMTON/EDWIN A LINK FIELD	BINGHAMTON, NY
BGR	ANE	BANGOR INTL	BANGOR, ME
BIS	AGL	BISMARCK MUNI	BISMARCK, ND
BJC	ANM	ROCKY MOUNTAIN METROPOLITAN	DENVER, CO
BKL	AGL	BURKE LAKEFRONT	CLEVELAND, OH
BKV	ASO	BROOKSVILLE-TAMPA BAY RGNL	BROOKSVILLE, FL
BMG	AGL	MONROE COUNTY	BLOOMINGTON, IN
BMI	AGL	CENTRAL IL RGNL ARPT AT BLOOMINGTON-NORMAL	BLOOMINGTON/NORMAL, IL
BPT	ASW	JACK BROOKS RGNL	BEAUMONT/PORT ARTHUR, TX
BQN	ASO	RAFAEL HERNANDEZ	AGUADILLA, PR
BRO	ASW	BROWNSVILLE/SOUTH PADRE ISLAND INTL	BROWNSVILLE, TX
BTL	AGL	W K KELLOGG	BATTLE CREEK, MI
BTR	ASW	BATON ROUGE METROPOLITAN, RYAN FIELD	BATON ROUGE, LA
BVY	ANE	BEVERLY RGNL	BEVERLY, MA
CCR	AWP	BUCHANAN FIELD	CONCORD, CA
CDW	AEA	ESSEX COUNTY	CALDWELL, NJ
CGF	AGL	CUYAHOGA COUNTY	CLEVELAND, OH
CHA	ASO	LOVELL FIELD	CHATTANOOGA, TN
CHD	AWP	CHANDLER MUNI	CHANDLER, AZ
CHO	AEA	CHARLOTTESVILLE-ALBEMARLE	CHARLOTTESVILLE, VA
CIC	AWP	CHICO MUNI	CHICO, CA
CKB	AEA	NORTH CENTRAL WEST VIRGINIA	CLARKSBURG, WV
CLL	ASW	EASTERWOOD FIELD	COLLEGE STATION, TX
CMA	AWP	CAMARILLO	CAMARILLO, CA
CMI	AGL	UNIVERSITY OF ILLINOIS-WILLARD	CHAMPAIGN/URBANA, IL

Table B-4 List of Non-Hub Towers

Location Identifier	Region	Airport Name	City, State
CNO	AWP	CHINO	CHINO, CA
CNW	ASW	TSTC WACO	WACO, TX
COU	ACE	COLUMBIA RGNL	COLUMBIA, MO
CPR	ANM	CASPER/NATRONA COUNTY INTL	CASPER, WY
CPS	AGL	ST LOUIS DOWNTOWN	CAHOKIA/ST LOUIS, IL
CRE	ASO	GRAND STRAND	NORTH MYRTLE BEACH, SC
CRG	ASO	JACKSONVILLE EXECUTIVE AT CRAIG	JACKSONVILLE, FL
CRP	ASW	CORPUS CHRISTI INTL	CORPUS CHRISTI, TX
CRQ	AWP	MC CLELLAN-PALOMAR	CARLSBAD, CA
CRW	AEA	YEAGER	CHARLESTON, WV
CSG	ASO	COLUMBUS	COLUMBUS, GA
CWA	AGL	CENTRAL WISCONSIN	MOSINEE, WI
CWF	ASW	CHENNAULT INTL	LAKE CHARLES, LA
CXO	ASW	LONE STAR EXECUTIVE	HOUSTON, TX
CXY	AEA	CAPITAL CITY	HARRISBURG, PA
CYS	ANM	CHEYENNE RGNL/JERRY OLSON FIELD	CHEYENNE, WY
DAB	ASO	DAYTONA BEACH INTL	DAYTONA BEACH, FL
DBQ	ACE	DUBUQUE RGNL	DUBUQUE, IA
DEC	AGL	DECATUR	DECATUR, IL
DET	AGL	COLEMAN A YOUNG MUNI	DETROIT, MI
DHN	ASO	DOTHAN RGNL	DOTHAN, AL
DLH	AGL	DULUTH INTL	DULUTH, MN
DPA	AGL	DUPAGE	CHICAGO/WEST CHICAGO, IL
DTN	ASW	SHREVEPORT DOWNTOWN	SHREVEPORT, LA
DTO	ASW	DENTON ENTERPRISE	DENTON, TX
DVT	AWP	PHOENIX DEER VALLEY	PHOENIX, AZ
DWH	ASW	DAVID WAYNE HOOKS MEMORIAL	HOUSTON, TX
DXR	ANE	DANBURY MUNI	DANBURY, CT
EAU	AGL	CHIPPEWA VALLEY RGNL	EAU CLAIRE, WI
EGE	ANM	EAGLE COUNTY RGNL	EAGLE, CO
ELM	AEA	ELMIRA/CORNING RGNL	ELMIRA/CORNING, NY
EMT	AWP	SAN GABRIEL VALLEY	EL MONTE, CA
ENA	AAL	KENAI MUNI	KENAI, AK
ENW	AGL	KENOSHA RGNL	KENOSHA, WI
ERI	AEA	ERIE INTL/TOM RIDGE FIELD	ERIE, PA
ESN	AEA	EASTON/NEWMAM FIELD	EASTON, MD
EVB	ASO	NEW SMYRNA BEACH MUNI	NEW SMYRNA BEACH, FL
EVV	AGL	EVANSVILLE RGNL	EVANSVILLE, IN
EWB	ANE	NEW BEDFORD RGNL	NEW BEDFORD, MA
EWN	ASO	COASTAL CAROLINA REGIONAL	NEW BERN, NC
EYW	ASO	KEY WEST INTL	KEY WEST, FL
FAR	AGL	HECTOR INTL	FARGO, ND
FAY	ASO	FAYETTEVILLE RGNL/GRANNIS FIELD	FAYETTEVILLE, NC
FCM	AGL	FLYING CLOUD	MINNEAPOLIS, MN
FDK	AEA	FREDERICK MUNI	FREDERICK, MD
FFZ	AWP	FALCON FLD	MESA, AZ
FIN	ASO	FLAGLER EXECUTIVE	PALM COAST, FL
FLG	AWP	FLAGSTAFF PULLIAM	FLAGSTAFF, AZ
FLO	ASO	FLORENCE RGNL	FLORENCE, SC
FMN	ASW	FOUR CORNERS RGNL	FARMINGTON, NM
FMY	ASO	PAGE FIELD	FORT MYERS, FL
FNT	AGL	BISHOP INTL	FLINT, MI
FOE	ACE	TOPEKA RGNL	TOPEKA, KS
FOK	AEA	FRANCIS S GABRESKI	WESTHAMPTON BEACH, NY
FPR	ASO	TREASURE COAST INTL	FORT PIERCE, FL
FRG	AEA	REPUBLIC	FARMINGDALE, NY
FSM	ASW	FORT SMITH RGNL	FORT SMITH, AR
FTG	ANM	FRONT RANGE	DENVER, CO
FTW	ASW	FORT WORTH MEACHAM INTL	FORT WORTH, TX
FTY	ASO	FULTON COUNTY AIRPORT-BROWN FIELD	ATLANTA, GA
FUL	AWP	FULLERTON MUNI	FULLERTON, CA
FWA	AGL	FORT WAYNE INTL	FORT WAYNE, IN
FWS	ASW	FORT WORTH SPINKS	FORT WORTH, TX
FXE	ASO	FORT LAUDERDALE EXECUTIVE	FORT LAUDERDALE, FL
FYV	ASW	DRAKE FIELD	FAYETTEVILLE, AR
GCK	ACE	GARDEN CITY RGNL	GARDEN CITY, KS
GCN	AWP	GRAND CANYON NATIONAL PARK	GRAND CANYON, AZ
GEU	AWP	GLENDALE MUNI	GLENDALE, AZ
GFK	AGL	GRAND FORKS INTL	GRAND FORKS, ND
GGG	ASW	EAST TEXAS RGNL	LONGVIEW, TX

Table B-4 List of Non-Hub Towers

Location Identifier	Region	Airport Name	City, State
GJT	ANM	GRAND JUNCTION REGIONAL	GRAND JUNCTION, CO
GKY	ASW	ARLINGTON MUNI	ARLINGTON, TX
GLH	ASO	GREENVILLE MID-DELTA	GREENVILLE, MS
GLS	ASW	SCHOLES INTL AT GALVESTON	GALVESTON, TX
GMU	ASO	GREENVILLE DOWNTOWN	GREENVILLE, SC
GNV	ASO	GAINESVILLE RGNL	GAINESVILLE, FL
GON	ANE	GROTON-NEW LONDON	GROTON (NEW LONDON), CT
GPI	ANM	GLACIER PARK INTL	KALISPELL, MT
GPM	ASW	GRAND PRAIRIE MUNI	GRAND PRAIRIE, TX
GPT	ASO	GULFPORT-BILOXI INTL	GULFPORT, MS
GRB	AGL	GREEN BAY-AUSTIN STRAUBEL INTL	GREEN BAY, WI
GRI	ACE	CENTRAL NEBRASKA RGNL	GRAND ISLAND, NE
GTF	ANM	GREAT FALLS INTL	GREAT FALLS, MT
GTR	ASO	GOLDEN TRIANGLE RGNL	COLUMBUS/W POINT/STARKVILLE, MS
GTU	ASW	GEORGETOWN MUNI	GEORGETOWN, TX
GYH	ASO	DONALDSON FIELD	GREENVILLE, SC
GYR	AWP	PHOENIX GOODYEAR	GOODYEAR, AZ
GYI	AGL	GARY/CHICAGO INTL	GARY, IN
HEF	AEA	MANASSAS RGNL/HARRY P DAVIS FIELD	WASHINGTON, DC
HFD	ANE	HARTFORD-BRAINARD	HARTFORD, CT
HGR	AEA	HAGERSTOWN RGNL-RICHARD A HENSON FLD	HAGERSTOWN, MD
HHR	AWP	JACK NORTHROP FIELD/HAWTHORNE MUNI	HAWTHORNE, CA
HIO	ANM	PORTLAND-HILLSBORO	PORTLAND, OR
HKS	ASO	HAWKINS FIELD	JACKSON, MS
HKY	ASO	HICKORY RGNL	HICKORY, NC
HLG	AEA	WHEELING OHIO CO	WHEELING, WV
HLN	ANM	HELENA RGNL	HELENA, MT
HND	AWP	HENDERSON EXECUTIVE	LAS VEGAS, NV
HOB	ASW	LEA COUNTY RGNL	HOBBS, NM
HQZ	ASW	MESQUITE METRO	MESQUITE, TX
HRL	ASW	VALLEY INTL	HARLINGEN, TX
HSA	ASO	STENNIS INTL	BAY ST LOUIS, MS
HTS	AEA	TRI-STATE/MILTON J FERGUSON FIELD	HUNTINGTON, WV
HUF	AGL	TERRE HAUTE INTL-HULMAN FIELD	TERRE HAUTE, IN
HUM	ASW	HOUMA-TERREBONNE	HOUMA, LA
HUT	ACE	HUTCHINSON RGNL	HUTCHINSON, KS
HVN	ANE	TWEED-NEW HAVEN	NEW HAVEN, CT
HWD	AWP	HAYWARD EXECUTIVE	HAYWARD, CA
HWO	ASO	NORTH PERRY	HOLLYWOOD, FL
HXD	ASO	HILTON HEAD	HILTON HEAD ISLAND, SC
HYA	ANE	BARNSTABLE MUNI-BOARDMAN/POLANDO FIELD	HYANNIS, MA
HYI	ASW	SAN MARCOS REGIONAL	AUSTIN, TX
IAG	AEA	NIAGARA FALLS INTL	NIAGARA FALLS, NY
IDA	ANM	IDAHO FALLS RGNL	IDAHO FALLS, ID
IFP	AWP	LAUGHLIN/BULLHEAD INTL	BULLHEAD CITY, AZ
ILG	AEA	NEW CASTLE	WILMINGTON, DE
INT	ASO	SMITH REYNOLDS	WINSTON SALEM, NC
IPT	AEA	WILLIAMSPORT RGNL	WILLIAMSPORT, PA
ISM	ASO	KISSIMMEE GATEWAY	ORLANDO, FL
ISO	ASO	KINSTON RGNL JETPORT AT STALLINGS FLD	KINSTON, NC
ITH	AEA	ITHACA TOMPKINS RGNL	ITHACA, NY
IXD	ACE	NEW CENTURY AIRCENTER	OLATHE, KS
JAC	ANM	JACKSON HOLE	JACKSON, WY
JEF	ACE	JEFFERSON CITY MEMORIAL	JEFFERSON CITY, MO
JLN	ACE	JOPLIN RGNL	JOPLIN, MO
JNU	AAL	JUNEAU INTL	JUNEAU, AK
JQF	ASO	CONCORD RGNL	CONCORD, NC
JRF	AWP	KALAELOA (JOHN RODGERS FIELD)	KAPOLEI, HI
JVL	AGL	SOUTHERN WISCONSIN RGNL	JANESVILLE, WI
JXN	AGL	JACKSON COUNTY-REYNOLDS FIELD	JACKSON, MI
LAF	AGL	PURDUE UNIVERSITY	LAFAYETTE, IN
LAL	ASO	LAKELAND LINDER RGNL	LAKELAND, FL
LAN	AGL	CAPITAL REGION INTL	LANSING, MI
LAW	ASW	LAWTON-FORT SILL RGNL	LAWTON, OK
LBE	AEA	ARNOLD PALMER RGNL	LATROBE, PA
LCH	ASW	LAKE CHARLES RGNL	LAKE CHARLES, LA
LEB	ANE	LEBANON MUNI	LEBANON, NH
LEE	ASO	LEESBURG INTL	LEESBURG, FL
LFT	ASW	LAFAYETTE RGNL/PAUL FOURNET FIELD	LAFAYETTE, LA
LMT	ANM	CRATER LAKE-KLAMATH RGNL	KLAMATH FALLS, OR

Table B-4 List of Non-Hub Towers

Location Identifier	Region	Airport Name	City, State
LNK	ACE	LINCOLN	LINCOLN, NE
LNS	AEA	LANCASTER	LANCASTER, PA
LOU	ASO	BOWMAN FIELD	LOUISVILLE, KY
LRD	ASW	LAREDO INTL	LAREDO, TX
LSE	AGL	LA CROSSE RGNL	LA CROSSE, WI
LUK	AGL	CINCINNATI MUNI AIRPORT LUNKEN FIELD	CINCINNATI, OH
LVK	AWP	LIVERMORE MUNI	LIVERMORE, CA
LWB	AEA	GREENBRIER VALLEY	LEWISBURG, WV
LWM	ANE	LAWRENCE MUNI	LAWRENCE, MA
LWS	ANM	LEWISTON-NEZ PERCE COUNTY	LEWISTON, ID
LYH	AEA	LYNCHBURG RGNL/PRESTON GLENN FLD	LYNCHBURG, VA
LZU	ASO	GWINNETT COUNTY - BRISCOE FIELD	LAWRENCEVILLE, GA
MBS	AGL	MBS INTL	SAGINAW, MI
MCN	ASO	MIDDLE GEORGIA RGNL	MACON, GA
MDH	AGL	SOUTHERN ILLINOIS	CARBONDALE/MURPHYSBORO, IL
MEI	ASO	KEY FIELD	MERIDIAN, MS
MER	AWP	CASTLE	ATWATER, CA
MFD	AGL	MANSFIELD LAHM RGNL	MANSFIELD, OH
MFE	ASW	MC ALLEN MILLER INTL	MC ALLEN, TX
MFR	ANM	ROGUE VALLEY INTL - MEDFORD	MEDFORD, OR
MGM	ASO	MONTGOMERY RGNL (DANNELLY FIELD)	MONTGOMERY, AL
MGW	AEA	MORGANTOWN MUNI-WALTER L BILL HART FLD	MORGANTOWN, WV
MHK	ACE	MANHATTAN RGNL	MANHATTAN, KS
MHR	AWP	SACRAMENTO MATHER	SACRAMENTO, CA
MIC	AGL	CRYSTAL	MINNEAPOLIS, MN
MIE	AGL	DELAWARE COUNTY RGNL	MUNCIE, IN
MKC	ACE	CHARLES B WHEELER DOWNTOWN	KANSAS CITY, MO
MKG	AGL	MUSKEGON COUNTY	MUSKEGON, MI
MKK	AWP	MOLOKAI	KAUNAKAKAI, HI
MKL	ASO	MC KELLAR-SIPES RGNL	JACKSON, TN
MLB	ASO	MELBOURNE INTL	MELBOURNE, FL
MLI	AGL	QUAD CITY INTL	MOLINE, IL
MLU	ASW	MONROE RGNL	MONROE, LA
MMU	AEA	MORRISTOWN MUNI	MORRISTOWN, NJ
MOB	ASO	MOBILE RGNL	MOBILE, AL
MOD	AWP	MODESTO CITY-CO-HARRY SHAM FLD	MODESTO, CA
MOT	AGL	MINOT INTL	MINOT, ND
MQY	ASO	SMYRNA	SMYRNA, TN
MRI	AAL	MERRILL FIELD	ANCHORAGE, AK
MRY	AWP	MONTEREY RGNL	MONTEREY, CA
MSO	ANM	MISSOULA INTL	MISSOULA, MT
MTN	AEA	MARTIN STATE	BALTIMORE, MD
MVY	ANE	MARTHA'S VINEYARD	VINEYARD HAVEN, MA
MWA	AGL	WILLIAMSON COUNTY RGNL	MARION, IL
MWC	AGL	LAWRENCE J TIMMERMAN	MILWAUKEE, WI
MWH	ANM	GRANT CO INTL	MOSES LAKE, WA
MYF	AWP	MONTGOMERY-GIBBS EXECUTIVE	SAN DIEGO, CA
NEW	ASW	LAKEFRONT	NEW ORLEANS, LA
NQA	ASO	MILLINGTON RGNL JETPORT	MILLINGTON/MEMPHIS , TN
OCF	ASO	OCALA INTL-JIM TAYLOR FIELD	OCALA, FL
OGD	ANM	OGDEN-HINCKLEY	OGDEN, UT
OJC	ACE	JOHNSON COUNTY EXECUTIVE	OLATHE, KS
OLM	ANM	OLYMPIA RGNL	OLYMPIA, WA
OLV	ASO	OLIVE BRANCH	OLIVE BRANCH, MS
OMN	ASO	ORMOND BEACH MUNI	ORMOND BEACH, FL
OPF	ASO	OPA-LOCKA EXECUTIVE	MIAMI, FL
ORH	ANE	WORCESTER RGNL	WORCESTER, MA
ORL	ASO	EXECUTIVE	ORLANDO, FL
OSH	AGL	WITTMAN RGNL	OSHKOSH, WI
OSU	AGL	OHIO STATE UNIVERSITY	COLUMBUS, OH
OTH	ANM	SOUTHWEST OREGON RGNL	NORTH BEND, OR
OUN	ASW	UNIVERSITY OF OKLAHOMA WESTHEIMER	NORMAN, OK
OWB	ASO	OWENSBORO-DAVIESS COUNTY	OWENSBORO, KY
OWD	ANE	NORWOOD MEMORIAL	NORWOOD, MA
OXC	ANE	WATERBURY-OXFORD	OXFORD, CT
OXR	AWP	OXNARD	OXNARD, CA
PAE	ANM	SNOHOMISH COUNTY (PAINE FLD)	EVERETT, WA
PAH	ASO	BARKLEY RGNL	PADUCAH, KY
PAO	AWP	PALO ALTO	PALO ALTO, CA
PDK	ASO	DEKALB-PEACHTREE	ATLANTA, GA

Table B-4 List of Non-Hub Towers

Location Identifier	Region	Airport Name	City, State
PDT	ANM	EASTERN OREGON RGNL AT PENDLETON	PENDLETON, OR
PHF	AEA	NEWPORT NEWS/WILLIAMSBURG INTL	NEWPORT NEWS, VA
PIA	AGL	GENERAL DOWNING - PEORIA INTL	PEORIA, IL
PIH	ANM	POCATELLO RGNL	POCATELLO, ID
PKB	AEA	MID-OHIO VALLEY RGNL	PARKERSBURG, WV
PMD	AWP	PALMDALE USAF PLANT 42	PALMDALE, CA
PMP	ASO	POMPANO BEACH AIRPARK	POMPANO BEACH, FL
PNE	AEA	NORTHEAST PHILADELPHIA	PHILADELPHIA, PA
POC	AWP	BRACKETT FIELD	LA VERNE, CA
POU	AEA	DUTCHESS COUNTY	POUGHKEEPSIE, NY
PRC	AWP	ERNEST A LOVE FIELD	PRESCOTT, AZ
PSC	ANM	TRI-CITIES	PASCO, WA
PTK	AGL	OAKLAND COUNTY INTL	PONTIAC, MI
PUB	ANM	PUEBLO MEMORIAL	PUEBLO, CO
PVU	ANM	PROVO MUNI	PROVO, UT
PWA	ASW	WILEY POST	OKLAHOMA CITY, OK
PWK	AGL	CHICAGO EXECUTIVE	CHICAGO/PROSPECT HEIGHTS/WHEELING, IL
RAL	AWP	RIVERSIDE MUNI	RIVERSIDE, CA
RAP	AGL	RAPID CITY RGNL	RAPID CITY, SD
RBD	ASW	DALLAS EXECUTIVE	DALLAS, TX
RDD	AWP	REDDING MUNI	REDDING, CA
RDG	AEA	READING RGNL/CARL A SPAATZ FIELD	READING, PA
RDM	ANM	ROBERTS FIELD	REDMOND, OR
RFD	AGL	CHICAGO/ROCKFORD INTL	CHICAGO/ROCKFORD, IL
RHV	AWP	REID-HILLVIEW OF SANTA CLARA COUNTY	SAN JOSE, CA
RME	AEA	GRIFFISS INTL	ROME, NY
RNM	AWP	RAMONA	RAMONA, CA
RNT	ANM	RENTON MUNI	RENTON, WA
ROA	AEA	ROANOKE-BLACKSBURG RGNL/WOODRUM FIELD	ROANOKE, VA
ROG	ASW	ROGERS EXECUTIVE - CARTER FIELD	ROGERS, AR
ROW	ASW	ROSWELL INTL AIR CENTER	ROSWELL, NM
RST	AGL	ROCHESTER INTL	ROCHESTER, MN
RVS	ASW	RICHARD LLOYD JONES JR	TULSA, OK
RYN	AWP	RYAN FIELD	TUCSON, AZ
RYY	ASO	COBB COUNTY INTL-MCCOLLUM FIELD	ATLANTA, GA
SAC	AWP	SACRAMENTO EXECUTIVE	SACRAMENTO, CA
SAF	ASW	SANTA FE MUNI	SANTA FE, NM
SAW	AGL	SAWYER INTL	MARQUETTE, MI
SBA	AWP	SANTA BARBARA MUNI	SANTA BARBARA, CA
SBN	AGL	SOUTH BEND INTL	SOUTH BEND, IN
SBP	AWP	SAN LUIS COUNTY RGNL	SAN LUIS, CA
SBY	AEA	SALISBURY-OCEAN CITY WICOMICO RGNL	SALISBURY, MD
SCK	AWP	STOCKTON METROPOLITAN	STOCKTON, CA
SDL	AWP	SCOTTSDALE	SCOTTSDALE, AZ
SDM	AWP	BROWN FIELD MUNI	SAN DIEGO, CA
SEE	AWP	GILLESPIE FIELD	SAN DIEGO/EL CAJON, CA
SFF	ANM	FELTS FIELD	SPOKANE, WA
SGJ	ASO	NORTHEAST FLORIDA RGNL	ST AUGUSTINE, FL
SGR	ASW	SUGAR LAND RGNL	HOUSTON, TX
SHV	ASW	SHREVEPORT RGNL	SHREVEPORT, LA
SIG	ASO	FERNANDO LUIS RIBAS DOMINICCI	SAN JUAN, PR
SJT	ASW	SAN ANGELO RGNL/MATHIS FIELD	SAN ANGELO, TX
SLE	ANM	MCNARY FLD	SALEM, OR
SLN	ACE	SALINA RGNL	SALINA, KS
SMO	AWP	SANTA MONICA MUNI	SANTA MONICA, CA
SMX	AWP	SANTA MARIA PUB/CAPT G ALLAN HANCOCK FLD	SANTA MARIA, CA
SNS	AWP	SALINAS MUNI	SALINAS, CA
SPG	ASO	ALBERT WHITTED	ST PETERSBURG, FL
SPI	AGL	ABRAHAM LINCOLN CAPITAL	SPRINGFIELD, IL
SQL	AWP	SAN CARLOS	SAN CARLOS, CA
SSF	ASW	STINSON MUNI	SAN ANTONIO, TX
STC	AGL	ST CLOUD RGNL	ST CLOUD, MN
STJ	ACE	ROSECRANS MEMORIAL	ST JOSEPH, MO
STP	AGL	ST PAUL DOWNTOWN HOLMAN FLD	ST PAUL, MN
STS	AWP	CHARLES M SCHULZ - SONOMA COUNTY	SANTA ROSA, CA
STX	ASO	HENRY E ROHLSSEN	CHRISTIANSTED, VI
SUA	ASO	WITHAM FIELD	STUART, FL
SUN	ANM	FRIEDMAN MEMORIAL	HAILEY, ID
SUS	ACE	SPIRIT OF ST LOUIS	ST LOUIS, MO
SUX	ACE	SIOUX GATEWAY/COL BUD DAY FIELD	SIOUX CITY, IA

Table B-4 List of Non-Hub Towers

Location Identifier	Region	Airport Name	City, State
SWF	AEA	STEWART INTL	NEW YORK , NY
SWO	ASW	STILLWATER RGNL	STILLWATER, OK
TCL	ASO	TUSCALOOSA RGNL	TUSCALOOSA, AL
TEB	AEA	TETERBORO	TETERBORO, NJ
TIW	ANM	TACOMA NARROWS	TACOMA, WA
TIX	ASO	SPACE COAST RGNL	TITUSVILLE, FL
TKI	ASW	MCKINNEY NATIONAL	DALLAS, TX
TLH	ASO	TALLAHASSEE INTL	TALLAHASSEE, FL
TMB	ASO	KENDALL TAMiami EXECUTIVE	MIAMI, FL
TOA	AWP	ZAMPERINI FIELD	TORRANCE, CA
TOL	AGL	TOLEDO EXPRESS	TOLEDO, OH
TOP	ACE	PHILIP BILLARD MUNI	TOPEKA, KS
TRI	ASO	TRI-CITIES RGNL TN/VA	BRISTOL/JOHNSON/KINGSPORT, TN
TTD	ANM	PORTLAND-TROUTDALE	PORTLAND, OR
TTN	AEA	TRENTON MERCER	TRENTON, NJ
TUP	ASO	TUPELO RGNL	TUPELO, MS
TVC	AGL	CHERRY CAPITAL	TRAVERSE CITY, MI
TWF	ANM	JOSLIN FIELD - MAGIC VALLEY RGNL	TWIN FALLS, ID
TXK	ASW	TEXARKANA RGNL-WEBB FIELD	TEXARKANA, AR
TYR	ASW	TYLER POUNDS RGNL	TYLER, TX
TZR	AGL	BOLTON FIELD	COLUMBUS, OH
UAO	ANM	AURORA STATE	AURORA, OR
UES	AGL	WAUKESHA COUNTY	WAUKESHA, WI
UGN	AGL	CHICAGO WAUKEGAN	CHICAGO WAUKEGAN, IL
UNV	AEA	UNIVERSITY PARK	STATE COLLEGE, PA
VCT	ASW	VICTORIA RGNL	VICTORIA, TX
VCV	AWP	SOUTHERN CALIFORNIA LOGISTICS	VICTORVILLE, CA
VGT	AWP	NORTH LAS VEGAS	LAS VEGAS, NV
VNY	AWP	VAN NUYS	VAN NUYS, CA
VQQ	ASO	CECIL	JACKSONVILLE, FL
VRB	ASO	VERO BEACH MUNI	VERO BEACH, FL
WDG	ASW	ENID WOODRING RGNL	ENID, OK
WHP	AWP	WHITEMAN	LOS ANGELES, CA
WJF	AWP	GENERAL WM J FOX AIRFIELD	LANCASTER, CA
YIP	AGL	WILLOW RUN	DETROIT, MI
YKM	ANM	YAKIMA AIR TERMINAL/MCALLISTER FIELD	YAKIMA, WA
YNG	AGL	YOUNGSTOWN-WARREN RGNL	YOUNGSTOWN/WARREN, OH

Listed 387 Airports

Table B-5 List of FAA Contract Towers

Location Identifier	Region	Airport Name	City, State
ABY	ASO	SOUTHWEST GEORGIA RGNL	ALBANY, GA
ADM	ASW	ARDMORE MUNI	ARDMORE, OK
ADQ	AAL	KODIAK	KODIAK, AK
AEG	ASW	DOUBLE EAGLE II	ALBUQUERQUE, NM
AEX	ASW	ALEXANDRIA INTL	ALEXANDRIA, LA
AHN	ASO	ATHENS/BEN EPPS	ATHENS, GA
AKN	AAL	KING SALMON	KING SALMON, AK
ALN	AGL	ST LOUIS RGNL	ALTON/ST LOUIS, IL
ALW	ANM	WALLA WALLA RGNL	WALLA WALLA, WA
ANE	AGL	ANOKA COUNTY-BLAINE ARPT (JANES FIELD)	MINNEAPOLIS, MN
APF	ASO	NAPLES MUNI	NAPLES, FL
ARA	ASW	ACADIANA RGNL	NEW IBERIA, LA
ASG	ASW	SPRINGDALE MUNI	SPRINGDALE, AR
ASH	ANE	BOIRE FIELD	NASHUA, NH
ATW	AGL	APPLETON INTL	APPLETON, WI
BAF	ANE	WESTFIELD-BARNES RGNL	WESTFIELD/SPRINGFIELD, MA
BAK	AGL	COLUMBUS MUNI	COLUMBUS, IN
BAZ	ASW	NEW BRAUNFELS RGNL	NEW BRAUNFELS, TX
BBG	ACE	BRANSON	BRANSON, MO
BCT	ASO	BOCA RATON	BOCA RATON, FL
BDR	ANE	IGOR I SIKORSKY MEMORIAL	BRIDGEPORT, CT
BET	AAL	BETHEL	BETHEL, AK
BFM	ASO	MOBILE DOWNTOWN	MOBILE, AL
BKL	AGL	BURKE LAKEFRONT	CLEVELAND, OH
BKV	ASO	BROOKSVILLE-TAMPA BAY RGNL	BROOKSVILLE, FL
BLI	ANM	BELLINGHAM INTL	BELLINGHAM, WA
BMG	AGL	MONROE COUNTY	BLOOMINGTON, IN
BMI	AGL	CENTRAL IL RGNL ARPT AT BLOOMINGTON-NORMAL	BLOOMINGTON/NORMAL, IL
BQN	ASO	RAFAEL HERNANDEZ	AGUADILLA, PR
BRO	ASW	BROWNSVILLE/SOUTH PADRE ISLAND INTL	BROWNSVILLE, TX
BTL	AGL	W K KELLOGG	BATTLE CREEK, MI
BVY	ANE	BEVERLY RGNL	BEVERLY, MA
BZN	ANM	BOZEMAN YELLOWSTONE INTL	BOZEMAN, MT
CGF	AGL	CUYAHOGA COUNTY	CLEVELAND, OH
CHD	AWP	CHANDLER MUNI	CHANDLER, AZ
CHO	AEA	CHARLOTTESVILLE-ALBEMARLE	CHARLOTTESVILLE, VA
CIC	AWP	CHICO MUNI	CHICO, CA
CLL	ASW	EASTERWOOD FIELD	COLLEGE STATION, TX
CNW	ASW	TSTC WACO	WACO, TX
COU	ACE	COLUMBIA RGNL	COLUMBIA, MO
CRE	ASO	GRAND STRAND	NORTH MYRTLE BEACH, SC
CRG	ASO	JACKSONVILLE EXECUTIVE AT CRAIG	JACKSONVILLE, FL
CWA	AGL	CENTRAL WISCONSIN	MOSINEE, WI
CWF	ASW	CHENNAULT INTL	LAKE CHARLES, LA
CXO	ASW	LONE STAR EXECUTIVE	HOUSTON, TX
CXY	AEA	CAPITAL CITY	HARRISBURG, PA
CYS	ANM	CHEYENNE RGNL/JERRY OLSON FIELD	CHEYENNE, WY
DBQ	ACE	DUBUQUE RGNL	DUBUQUE, IA
DEC	AGL	DECATUR	DECATUR, IL
DET	AGL	COLEMAN A YOUNG MUNI	DETROIT, MI
DHN	ASO	DOTHAN RGNL	DOTHAN, AL
DTN	ASW	SHREVEPORT DOWNTOWN	SHREVEPORT, LA
DTO	ASW	DENTON ENTERPRISE	DENTON, TX
DXR	ANE	DANBURY MUNI	DANBURY, CT
EAU	AGL	CHIPPEWA VALLEY RGNL	EAU CLAIRE, WI
ECP	ASO	NORTHWEST FLORIDA BEACHES INTL	PANAMA CITY, FL
EGE	ANM	EAGLE COUNTY RGNL	EAGLE, CO
ENA	AAL	KENAI MUNI	KENAI, AK
ENW	AGL	KENOSHA RGNL	KENOSHA, WI
ESN	AEA	EASTON/NEWNAM FIELD	EASTON, MD
EVb	ASO	NEW SMYRNA BEACH MUNI	NEW SMYRNA BEACH, FL
EWB	ANE	NEW BEDFORD RGNL	NEW BEDFORD, MA
EWN	ASO	COASTAL CAROLINA REGIONAL	NEW BERN, NC
EYW	ASO	KEY WEST INTL	KEY WEST, FL
FDK	AEA	FREDERICK MUNI	FREDERICK, MD
FIN	ASO	FLAGLER EXECUTIVE	PALM COAST, FL
FLG	AWP	FLAGSTAFF PULLIAM	FLAGSTAFF, AZ
FMN	ASW	FOUR CORNERS RGNL	FARMINGTON, NM
FMY	ASO	PAGE FIELD	FORT MYERS, FL
FOE	ACE	TOPEKA RGNL	TOPEKA, KS

Table B-5 List of FAA Contract Towers

Location Identifier	Region	Airport Name	City, State
FOK	AEA	FRANCIS S GABRESKI	WESTHAMPTON BEACH, NY
FTG	ANM	FRONT RANGE	DENVER, CO
FTY	ASO	FULTON COUNTY AIRPORT-BROWN FIELD	ATLANTA, GA
FUL	AWP	FULLERTON MUNI	FULLERTON, CA
FWS	ASW	FORT WORTH SPINKS	FORT WORTH, TX
FYV	ASW	DRAKE FIELD	FAYETTEVILLE, AR
GCK	ACE	GARDEN CITY RGNL	GARDEN CITY, KS
GEU	AWP	GLENDALE MUNI	GLENDALE, AZ
GJT	ANM	GRAND JUNCTION REGIONAL	GRAND JUNCTION, CO
GKY	ASW	ARLINGTON MUNI	ARLINGTON, TX
GLH	ASO	GREENVILLE MID-DELTA	GREENVILLE, MS
GLS	ASW	SCHOLES INTL AT GALVESTON	GALVESTON, TX
GMU	ASO	GREENVILLE DOWNTOWN	GREENVILLE, SC
GNV	ASO	GAINESVILLE RGNL	GAINESVILLE, FL
GON	ANE	GROTON-NEW LONDON	GROTON (NEW LONDON), CT
GPI	ANM	GLACIER PARK INTL	KALISPELL, MT
GPM	ASW	GRAND PRAIRIE MUNI	GRAND PRAIRIE, TX
GRI	ACE	CENTRAL NEBRASKA RGNL	GRAND ISLAND, NE
GSN	AWP	FRANCISCO C ADA/SAIPAN INTL	SAIPAN ISLAND, CQ
GTR	ASO	GOLDEN TRIANGLE RGNL	COLUMBUS/W POINT/STARKVILLE, MS
GTU	ASW	GEORGETOWN MUNI	GEORGETOWN, TX
GUM	AWP	GUAM INTL	GUAM, GU
GYH	ASO	DONALDSON FIELD	GREENVILLE, SC
GYR	AWP	PHOENIX GOODYEAR	GOODYEAR, AZ
GYI	AGL	GARY/CHICAGO INTL	GARY, IN
HFD	ANE	HARTFORD-BRAINARD	HARTFORD, CT
HGR	AEA	HAGERSTOWN RGNL-RICHARD A HENSON FLD	HAGERSTOWN, MD
HHR	AWP	JACK NORTHROP FIELD/HAWTHORNE MUNI	HAWTHORNE, CA
HKS	ASO	HAWKINS FIELD	JACKSON, MS
HKY	ASO	HICKORY RGNL	HICKORY, NC
HLG	AEA	WHEELING OHIO CO	WHEELING, WV
HND	AWP	HENDERSON EXECUTIVE	LAS VEGAS, NV
HOB	ASW	LEA COUNTY RGNL	HOBBS, NM
HQZ	ASW	MESQUITE METRO	MESQUITE, TX
HRL	ASW	VALLEY INTL	HARLINGEN, TX
HSA	ASO	STENNIS INTL	BAY ST LOUIS, MS
HUM	ASW	HOUMA-TERREBONNE	HOUMA, LA
HUT	ACE	HUTCHINSON RGNL	HUTCHINSON, KS
HVN	ANE	TWEED-NEW HAVEN	NEW HAVEN, CT
HWO	ASO	NORTH PERRY	HOLLYWOOD, FL
HXD	ASO	HILTON HEAD	HILTON HEAD ISLAND, SC
HYA	ANE	BARNSTABLE MUNI-BOARDMAN/POLANDO FIELD	HYANNIS, MA
HYI	ASW	SAN MARCOS REGIONAL	AUSTIN, TX
IAG	AEA	NIAGARA FALLS INTL	NIAGARA FALLS, NY
IDA	ANM	IDAHO FALLS RGNL	IDAHO FALLS, ID
IFP	AWP	LAUGHLIN/BULLHEAD INTL	BULLHEAD CITY, AZ
INT	ASO	SMITH REYNOLDS	WINSTON SALEM, NC
IPT	AEA	WILLIAMSPORT RGNL	WILLIAMSPORT, PA
ISM	ASO	KISSIMMEE GATEWAY	ORLANDO, FL
ISO	ASO	KINSTON RGNL JETPORT AT STALLINGS FLD	KINSTON, NC
ITH	AEA	ITHACA TOMPKINS RGNL	ITHACA, NY
IWA	AWP	PHOENIX-MESA GATEWAY	PHOENIX, AZ
IXD	ACE	NEW CENTURY AIRCENTER	OLATHE, KS
JAC	ANM	JACKSON HOLE	JACKSON, WY
JEF	ACE	JEFFERSON CITY MEMORIAL	JEFFERSON CITY, MO
JLN	ACE	JOPLIN RGNL	JOPLIN, MO
JQF	ASO	CONCORD RGNL	CONCORD, NC
JRF	AWP	KALAELOA (JOHN RODGERS FIELD)	KAPOLEI, HI
JVL	AGL	SOUTHERN WISCONSIN RGNL	JANESVILLE, WI
JXN	AGL	JACKSON COUNTY-REYNOLDS FIELD	JACKSON, MI
KOA	AWP	KONA INTL AT KEAHOE	KAILUA/KONA, HI
LAL	ASO	LAKELAND LINDER RGNL	LAKELAND, FL
LAW	ASW	LAWTON-FORT SILL RGNL	LAWTON, OK
LBE	AEA	ARNOLD PALMER RGNL	LATROBE, PA
LEB	ANE	LEBANON MUNI	LEBANON, NH
LEE	ASO	LEESBURG INTL	LEESBURG, FL
LIH	AWP	LIHUE	LIHUE, HI
LMT	ANM	CRATER LAKE-KLAMATH RGNL	KLAMATH FALLS, OR
LNS	AEA	LANCASTER	LANCASTER, PA
LRD	ASW	LAREDO INTL	LAREDO, TX

Table B-5 List of FAA Contract Towers

Location Identifier	Region	Airport Name	City, State
LSE	AGL	LA CROSSE RGNL	LA CROSSE, WI
LUK	AGL	CINCINNATI MUNI AIRPORT LUNKEN FIELD	CINCINNATI, OH
LWB	AEA	GREENBRIER VALLEY	LEWISBURG, WV
LWM	ANE	LAWRENCE MUNI	LAWRENCE, MA
LWS	ANM	LEWISTON-NEZ PERCE COUNTY	LEWISTON, ID
LYH	AEA	LYNCHBURG RGNL/PRESTON GLENN FLD	LYNCHBURG, VA
LZU	ASO	GWINNETT COUNTY - BRISCOE FIELD	LAWRENCEVILLE, GA
MCN	ASO	MIDDLE GEORGIA RGNL	MACON, GA
MDH	AGL	SOUTHERN ILLINOIS	CARBONDALE/MURPHYSBORO, IL
MEI	ASO	KEY FIELD	MERIDIAN, MS
MER	AWP	CASTLE	ATWATER, CA
MFE	ASW	MC ALLEN MILLER INTL	MC ALLEN, TX
MFR	ANM	ROGUE VALLEY INTL - MEDFORD	MEDFORD, OR
MGW	AEA	MORGANTOWN MUNI-WALTER L BILL HART FLD	MORGANTOWN, WV
MHK	ACE	MANHATTAN RGNL	MANHATTAN, KS
MHR	AWP	SACRAMENTO MATHER	SACRAMENTO, CA
MIE	AGL	DELAWARE COUNTY RGNL	MUNCIE, IN
MKK	AWP	MOLOKAI	KAUNAKAKAI, HI
MKL	ASO	MC KELLAR-SIPES RGNL	JACKSON, TN
MLB	ASO	MELBOURNE INTL	MELBOURNE, FL
MOD	AWP	MODESTO CITY-CO-HARRY SHAM FLD	MODESTO, CA
MOT	AGL	MINOT INTL	MINOT, ND
MQY	ASO	SMYRNA	SMYRNA, TN
MSO	ANM	MISSOULA INTL	MISSOULA, MT
MTN	AEA	MARTIN STATE	BALTIMORE, MD
MVY	ANE	MARTHA'S VINEYARD	VINEYARD HAVEN, MA
MWA	AGL	WILLIAMSON COUNTY RGNL	MARION, IL
MWC	AGL	LAWRENCE J TIMMERMAN	MILWAUKEE, WI
NQA	ASO	MILLINGTON RGNL JETPORT	MILLINGTON/MEMPHIS , TN
OCF	ASO	OCALA INTL-JIM TAYLOR FIELD	OCALA, FL
OGD	ANM	OGDEN-HINCKLEY	OGDEN, UT
OJC	ACE	JOHNSON COUNTY EXECUTIVE	OLATHE, KS
OLM	ANM	OLYMPIA RGNL	OLYMPIA, WA
OLV	ASO	OLIVE BRANCH	OLIVE BRANCH, MS
OMN	ASO	ORMOND BEACH MUNI	ORMOND BEACH, FL
OPF	ASO	OPA-LOCKA EXECUTIVE	MIAMI, FL
ORH	ANE	WORCESTER RGNL	WORCESTER, MA
OSH	AGL	WITTMAN RGNL	OSHKOSH, WI
OSU	AGL	OHIO STATE UNIVERSITY	COLUMBUS, OH
OTH	ANM	SOUTHWEST OREGON RGNL	NORTH BEND, OR
OUN	ASW	UNIVERSITY OF OKLAHOMA WESTHEIMER	NORMAN, OK
OWB	ASO	OWENSBORO-DAVISS COUNTY	OWENSBORO, KY
OWD	ANE	NORWOOD MEMORIAL	NORWOOD, MA
OXC	ANE	WATERBURY-OXFORD	OXFORD, CT
OXR	AWP	OXNARD	OXNARD, CA
PAH	ASO	BARKLEY RGNL	PADUCAH, KY
PDT	ANM	EASTERN OREGON RGNL AT PENDLETON	PENDLETON, OR
PGD	ASO	PUNTA GORDA	PUNTA GORDA, FL
PIH	ANM	POCATELLO RGNL	POCATELLO, ID
PKB	AEA	MID-OHIO VALLEY RGNL	PARKERSBURG, WV
PMD	AWP	PALMDALE USAF PLANT 42	PALMDALE, CA
PMP	ASO	POMPAÑO BEACH AIRPARK	POMPAÑO BEACH, FL
PVU	ANM	PROVO MUNI	PROVO, UT
PWA	ASW	WILEY POST	OKLAHOMA CITY, OK
RAL	AWP	RIVERSIDE MUNI	RIVERSIDE, CA
RAP	AGL	RAPID CITY RGNL	RAPID CITY, SD
RBD	ASW	DALLAS EXECUTIVE	DALLAS, TX
RDD	AWP	REDDING MUNI	REDDING, CA
RDM	ANM	ROBERTS FIELD	REDMOND, OR
RME	AEA	GRIFFISS INTL	ROME, NY
RNM	AWP	RAMONA	RAMONA, CA
RNT	ANM	RENTON MUNI	RENTON, WA
ROG	ASW	ROGERS EXECUTIVE - CARTER FIELD	ROGERS, AR
RYN	AWP	RYAN FIELD	TUCSON, AZ
RYY	ASO	COBB COUNTY INTL-MCCOLLUM FIELD	ATLANTA, GA
SAC	AWP	SACRAMENTO EXECUTIVE	SACRAMENTO, CA
SAF	ASW	SANTA FE MUNI	SANTA FE, NM
SAW	AGL	SAWYER INTL	MARQUETTE, MI
SBP	AWP	SAN LUIS COUNTY RGNL	SAN LUIS, CA
SBY	AEA	SALISBURY-OCEAN CITY WICOMICO RGNL	SALISBURY, MD

Table B-5 List of FAA Contract Towers

Location Identifier	Region	Airport Name	City, State
SDM	AWP	BROWN FIELD MUNI	SAN DIEGO, CA
SFF	ANM	FELTS FIELD	SPOKANE, WA
SGJ	ASO	NORTHEAST FLORIDA RGNL	ST AUGUSTINE, FL
SGR	ASW	SUGAR LAND RGNL	HOUSTON, TX
SIG	ASO	FERNANDO LUIS RIBAS DOMINICCI	SAN JUAN, PR
SJT	ASW	SAN ANGELO RGNL/MATHIS FIELD	SAN ANGELO, TX
SLE	ANM	MCNARY FLD	SALEM, OR
SLN	ACE	SALINA RGNL	SALINA, KS
SMX	AWP	SANTA MARIA PUB/CAPT G ALLAN HANCOCK FLD	SANTA MARIA, CA
SNS	AWP	SALINAS MUNI	SALINAS, CA
SPG	ASO	ALBERT WHITTED	ST PETERSBURG, FL
SQL	AWP	SAN CARLOS	SAN CARLOS, CA
SSF	ASW	STINSON MUNI	SAN ANTONIO, TX
STC	AGL	ST CLOUD RGNL	ST CLOUD, MN
STJ	ACE	ROSECRANS MEMORIAL	ST JOSEPH, MO
STX	ASO	HENRY E ROHLSSEN	CHRISTIANSTED, VI
SUA	ASO	WITHAM FIELD	STUART, FL
SUN	ANM	FRIEDMAN MEMORIAL	HAILEY, ID
SWF	AEA	STEWART INTL	NEW YORK , NY
SWO	ASW	STILLWATER RGNL	STILLWATER, OK
TCL	ASO	TUSCALOOSA RGNL	TUSCALOOSA, AL
TIW	ANM	TACOMA NARROWS	TACOMA, WA
TIX	ASO	SPACE COAST RGNL	TITUSVILLE, FL
TKI	ASW	MCKINNEY NATIONAL	DALLAS, TX
TOP	ACE	PHILIP BILLARD MUNI	TOPEKA, KS
TTD	ANM	PORTLAND-TROUTDALE	PORTLAND, OR
TTN	AEA	TRENTON MERCER	TRENTON, NJ
TUP	ASO	TUPELO RGNL	TUPELO, MS
TXK	ASW	TEXARKANA RGNL-WEBB FIELD	TEXARKANA, AR
TYR	ASW	TYLER POUNDS RGNL	TYLER, TX
TZR	AGL	BOLTON FIELD	COLUMBUS, OH
UAO	ANM	AURORA STATE	AURORA, OR
UES	AGL	WAUKESHA COUNTY	WAUKESHA, WI
UGN	AGL	CHICAGO WAUKEGAN	CHICAGO WAUKEGAN, IL
UNV	AEA	UNIVERSITY PARK	STATE COLLEGE, PA
VCT	ASW	VICTORIA RGNL	VICTORIA, TX
VCV	AWP	SOUTHERN CALIFORNIA LOGISTICS	VICTORVILLE, CA
VQQ	ASO	CECIL	JACKSONVILLE, FL
WDG	ASW	ENID WOODRING RGNL	ENID, OK
WHP	AWP	WHITEMAN	LOS ANGELES, CA
WJF	AWP	GENERAL WM J FOX AIRFIELD	LANCASTER, CA
XNA	ASW	NORTHWEST ARKANSAS RGNL	FAYETTEVILLE/SPRINGDALE/, AR
YKM	ANM	YAKIMA AIR TERMINAL/MCALLISTER FIELD	YAKIMA, WA

Listed 253 Airports